








**LEGEND**

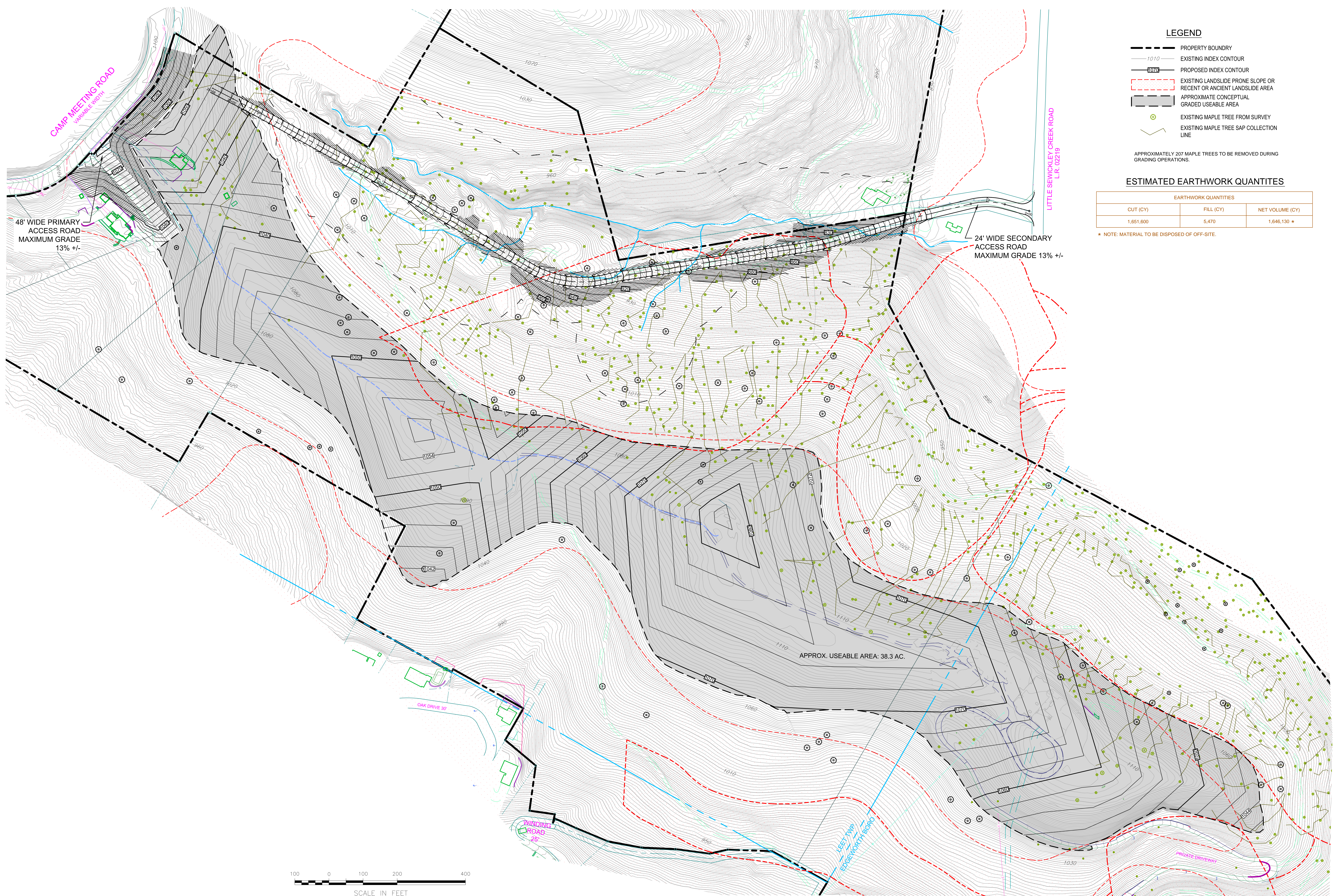
-  PROPERTY BOUNDARY
-  EXISTING INDEX CONTOUR
-  PROPOSED INDEX CONTOUR
-  EXISTING LANDSLIDE PRONE SLOPE OR RECENT OR ANCIENT LANDSLIDE AREA
-  APPROXIMATE CONCEPTUAL GRADED USEABLE AREA
-  EXISTING MAPLE TREE FROM SURVEY
-  EXISTING MAPLE TREE SAP COLLECTION LINE

APPROXIMATELY 207 MAPLE TREES TO BE REMOVED DURING GRADING OPERATIONS.

**ESTIMATED EARTHWORK QUANTITIES**

EARTHWORK QUANTITIES		
CUT (CY)	FILL (CY)	NET VOLUME (CY)
1,651,600	5,470	1,646,130 *

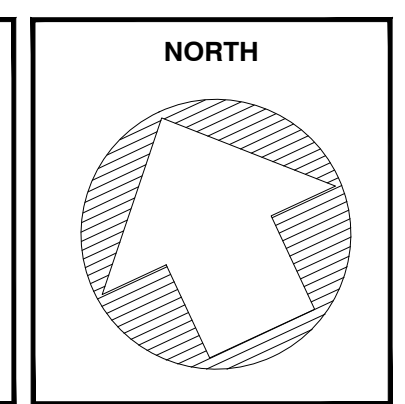
\* NOTE: MATERIAL TO BE DISPOSED OF OFF-SITE.



O:\SD Concept Grading Option 1.dwg

REVISIONS			
NO.	BY	DATE	DESCRIPTION

DESIGNED	GBD
DRAWN	GBD
CHECKED	JOP
REVIEWED	SMS/CAR
S.O.	160025



**LEET TOWNSHIP AND EDGEWORTH BORO**  
ALLEGHENY COUNTY, PENNSYLVANIA



**Michael Baker**  
INTERNATIONAL

**MICHAEL BAKER INTERNATIONAL**  
CONSULTING ENGINEERS  
MOON TOWNSHIP, PENNSYLVANIA

**SITE FEASIBILITY STUDY**  
**CONCEPTUAL GRADING PLAN - OPTION 1**  
**RIDGE TOP GRADING WITH EXCESS CUT MATERIAL**  
**TO BE DISPOSED OF OFF-SITE (LESSER RISK)**

TULL'S PARCELS  
ALLEGHENY COUNTY, PENNSYLVANIA

SCALE AS SHOWN	DATE MAY 2017
----------------	---------------

SHEET NO.  
**1**  
OF  
**1**