



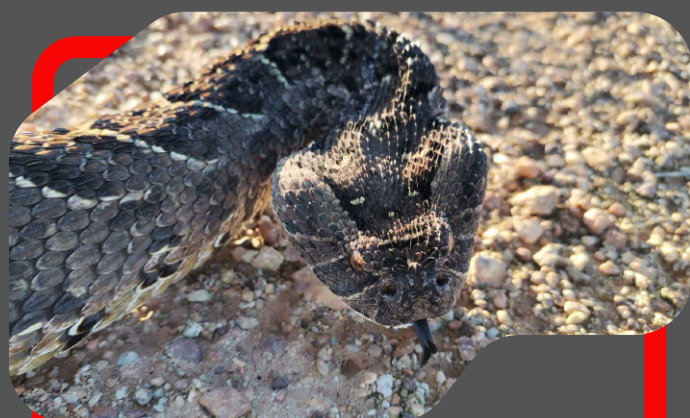
**Access**

Professional Development

Never handle any snake that you can't identify!

**ID**

# Common Snakes of The Vaal Triangle



**PUFF ADDER  
(BITIS ARIETANS)**

- Distribution: Throughout South Africa
- Colour: Colour varies but has V-shaped markings down the back pointing towards the tail
- Length: 0.9-1.2m but do get bigger
- Venom: Cytotoxic
- Venom Effects: Mixed Painful Progressive Swelling & Bleeding



**RINKHALS (HEMACHATUS HAEMACHATUS)**

- Distribution: Parts of the Cape Provinces, KZN, Mpumalanga, Limpopo, FS and Gauteng
- Colour: Black, brown or olive with white throat bands
- Length: 1.0-1.5m
- Venom: Cytotoxic and Neurotoxic
- Venom Effects: Progressive Weakness and Paralysis along with Painful Progressive Swelling



**NIGHT ADDER (CAUSUS RHOMBEATUS)**

- Distribution: Parts of the Western & Eastern Cape, KZN, Mpumalanga, Limpopo, Gauteng & FS
- Colour: Light grey, olive or light brown with rhombus shaped blocks on the back and a prominent V-pattern on top of the head
- Length: 0.6-1.0m
- Venom: Cytotoxic
- Venom Effects: Painful Progressive Swelling



**SPOTTED SKAAPSTEKER (PSAMMOPHYLAX RHOMBEATUS)**

- Distribution: Parts of the Western & Eastern Cape, KZN, Gauteng, FS, Gauteng, Limpopo and Mpumalanga
- Colour: Brown to olive with rows of dark-edged markings
- Length: 0.8-1.4m
- Venom: Mildly venomous
- Venom Effects: No danger to humans



**RED-LIPPED HERALD SNAKE  
(CROTAPHOPELTIS HOTAMBOEIA)**

- Distribution: Across SA but absent from the arid areas of the Western and Northern Cape
- Colour: Olive green to grey with white speckling. The temporal region and the back of the neck is black with a red, white, yellow or black upper lip
- Length: 0.7-1m
- Venom: Mildly venomous
- Venom Effects: No danger to humans



**CROSS MARKED GRASS SNAKE  
(PSAMMOPHIS CRUCIFER)**

- Distribution: Found in parts of all the provinces of SA
- Colour: Grey to olive brown with a dark broad stripe down the back. There are similar dark stripes down each side.
- Length: 0.6-0.8m
- Venom: Mildly venomous
- Venom Effects: No danger to humans



**BROWN HOUSE SNAKE (BOAEDON CAPENSIS)**

- Distribution: Throughout South Africa
- Colour: Light to reddish brown with or without darker blotches on the sides. There is a line running from the snout through the upper half of each eye
- Length: 0.9-1.1m
- Venom: None
- Venom Effects: Harmless



**AURORA HOUSE SNAKE (LAMPROPHIS AURORA)**

- Distribution: Found in parts of all provinces in SA
- Colour: Olive green with a bright yellow to orange stripe running down the spine
- Length: 0.6-0.9m
- Venom: None
- Venom Harmless



**BROWN WATER SNAKE  
(LYCODONOMORPHUS RUFULUS)**

- Distribution: Found in all the provinces except the Northern Cape and parts of the Western Cape
- Colour: Above dark to light brown with a pink to yellowish belly
- Length: 0.6-0.8m
- Venom: None
- Venom Effects: Harmless



**MOLE SNAKE (PSEUDOASPIS CANA)**

- Distribution: Throughout South Africa
- Colour: Adults are brown (black in the Western and Northern Cape), juveniles are brown with black and white zigzag spots
- Length: 1.4-2m
- Venom: None
- Venom Effects: Harmless however bite may be painful



**RHOMBIC EGG EATER (DISPHOLIDUS TYPUS)**

- Distribution: Found throughout South Africa
- Colour: Grey to brown with dark brown blotches down the back. There is a prominent V-marking on the neck with 1 or 2 narrower V-markings on the head
- Length: 0.7-1.1m
- Venom: None
- Venom Effects: Harmless



**COMMON WOLF SNAKE (LYCOPHIDION CAPENSE)**

- Distribution: Found in parts of all the provinces of SA but absent from the arid regions
- Colour: From light brown to black. Scales are often white edged giving them a speckled look
- Length: 0.4-0.6m
- Venom: None
- Venom Effects: Harmless

