

LVMTA Technic – Primer

Note values/pitch identification –

Student is given a note (C, D, E, F or G) and a note value (quarter note, half note, dotted half note or whole note). Student will count out loud and play with given note/value.

Four quarter notes (Student may count 1/1/1/1 **OR** 1/2/3/4. No Orff counting)

Two half notes (Student may count 1-2/1-2 OR 1-2/3-4. No Orff counting.)

Two dotted half notes (Student may count 1-2-3/1-2-3 only. No Orff counting.)

Two whole notes (Student may count 1-2-3-4/1-2-3-4 only. No Orff counting.)

Example—

Examiner requests student to play two half notes on an E. Student may choose either hand and any E on the piano, but must count/play correctly.

Fingering –

Student will be asked to place either hand in C position. With chosen hand, student will be given a starting pitch and asked to play three (3) notes either going up or going down.

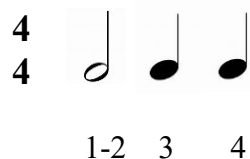
Example—

Examiner asks student to play three notes going up starting on D. Student would play D-E-F in the RH with fingers 2-3-4 or in the LH with fingers 4-3-2.

Rhythm –

Examiner will clap and count out loud a rhythm for the student. Student will clap and count the rhythm back to the examiner.

Example --



No technical etude is required at this level.

