

Chase-Riecken Musicianship Exam
LEVEL 7

Student _____

Teacher _____

SCORE (100 pts) _____

INTERVALS _____

1. Name the quality and size of the intervals. (5 pts)

Example
Perf 5th

2. Draw the melodic INTERVAL ABOVE each given note. (5 pts)

Example
Aug 5

Aug 4 dim 4 dim 7 dim 5 Aug 5

KEY SIGNATURES _____

1. Name the MAJOR KEY. (2 pts)

Example
E Major

2. Draw the KEY SIGNATURES for these keys. (2 pts)

Example
f minor

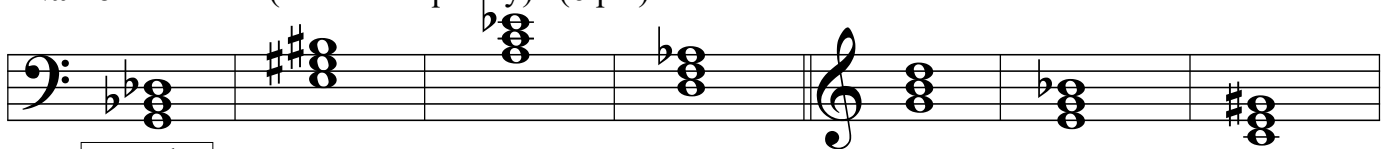
d minor Gb Major

SCALES and CHORDS

1. Name the scales. Give letter name, quality (Major/minor) and form if needed (natural, harmonic or melodic). (4 pts)



2. Name each triad (letter and quality). (6 pts)



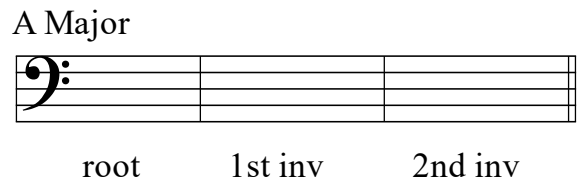
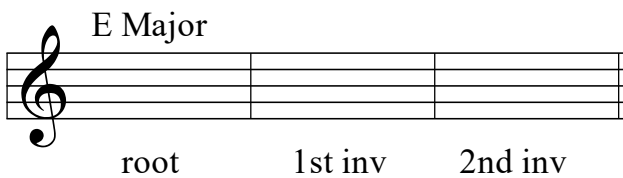
Example g dim

3. Draw the Cb Major scale in whole notes, adding accidentals as needed. **DO NOT DRAW THE KEY SIGNATURE!** Draw the Tonic (I) chord in the last measure. (5 pts)

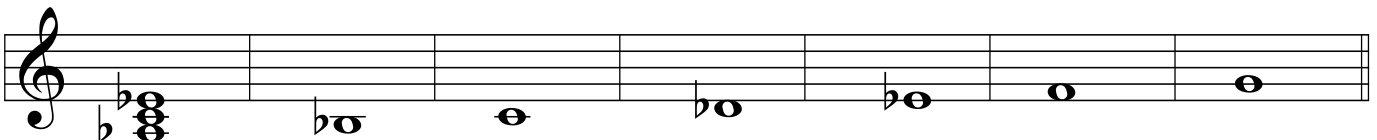


Tonic (I) chord

4. Draw the triads and their inversions. (6 pts)



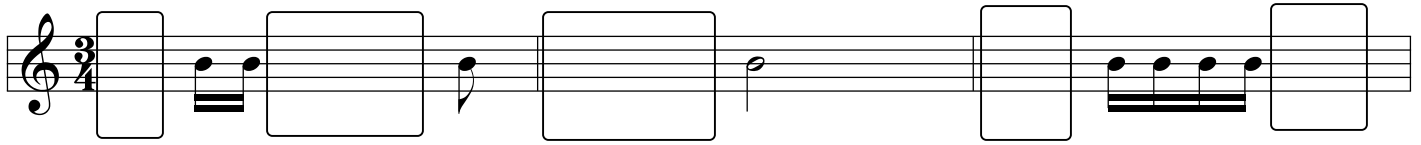
5. Draw a triad on each note of the Ab major scale. Label each triad with the proper Roman numeral and its quality (Maj, min, dim, Aug.) (12 pts)



Example I
Maj

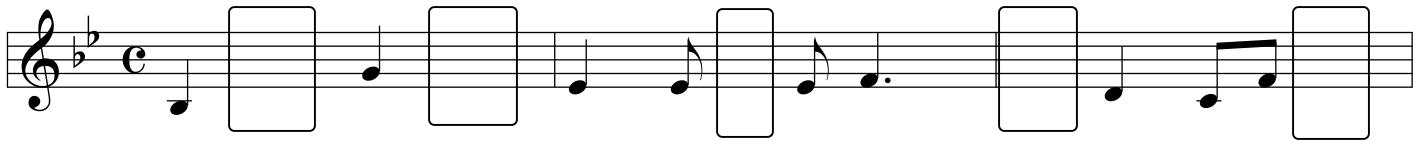
RHYTHMIC DICTATION _____

You will hear a three-measure pattern. Some rhythmic values are missing. Fill in the correct rhythms. One point for each blank filled correctly. (5 pts)



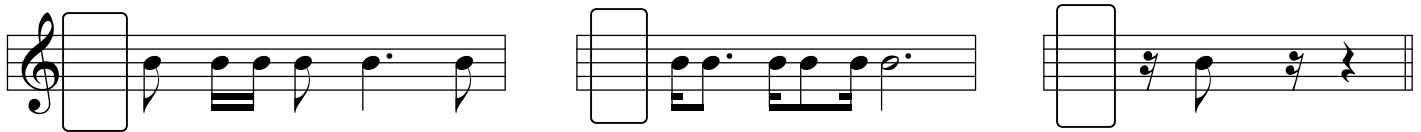
MELODIC DICTATION _____

You will hear a three-measure melody. Some notes are missing. Fill in the correct notes and the correct rhythms. One point for each blank filled correctly. (5 pts)



RHYTHM _____

Write in the correct time signature for each blank box. (3 pts)



EAR TRAINING _____

Listen to the SCALES, CHORDS, and INTERVALS listed below. Number them (1, 2, 3, etc.) in the order you hear them. (15 pts)

SCALES

- _____ Major
- _____ Natural Minor
- _____ Harmonic Minor
- _____ Melodic Minor
- _____ Whole Tone

CHORDS

- _____ Major
- _____ Minor
- _____ Diminished
- _____ Augmented

INTERVALS

- _____ Min 2nd
- _____ Min 3rd
- _____ Maj 3rd
- _____ Perf 4th
- _____ Maj 6th
- _____ Maj 7th

FORM _____

True or False (4 pts).

1. _____ A **Theme** is the first section in the sonata form.
2. _____ The **Development** is the chief idea in a composition.
3. _____ The second theme of the **Recapitulation** almost always in the tonic key.
4. _____ The **Exposition** introduces the themes of the first movement of the sonata.

VOCABULARY _____

Choose from the list of words to fill in the blanks (8 pts)

Piano Quintet	Tre corde	Con fuoco	Rondo
Una corda	Senza	Con pedale	Coda

1. A _____ is a form in which a principal theme repeats between several other themes.
2. A _____ is a chamber ensemble including a string quartet and a piano.
3. _____ is an Italian word meaning without.
4. _____ means to play with fire.
5. A _____ is the closing statement, or the 'tail'.
6. _____ means to use the soft pedal.
7. _____ means to use the damper pedal.
8. _____ means to release the soft pedal.

HISTORY _____

True or False (7 pts)

1. _____ J. S. Bach composed during the Baroque period.
2. _____ Aram Khachaturian was a French composer.
3. _____ George Gershwin was an American composer.
4. _____ W. A. Mozart was influenced by Bach and he influenced Beethoven.
5. _____ Gabriel Faure composed during the Classical period.
6. _____ Frederic Chopin had poor health and he died early of tuberculosis.
7. _____ J. S. Bach used American jazz in his compositions.