



2nd Half 2021



Editor: Arlene Flynn

# Farm Breaks Ground on Morgan's Orchard

**PHASE II** of West Mont Farm & Gardens 10-year plan is officially underway. PHASE I was a complete renovation of and additions to the Farm group home which was completed in October 2019. Due to the uncertainty of COVID in 2020, PHASE II was delayed until this year.

On September 21, 2021 PHASE II kicked off with dozens of people turning out for the groundbreaking of the long awaited **Morgan's Orchard**. It is named in memory of **Dick Morgan**, a beloved long-term Board member and supporter of West Mont. With Dick's passion for the outdoors, West Mont felt this was a fitting way to honor his memory. Originally designed as a Maze and after much consideration and research, the decision was made to develop

a fruit orchard, a far more practical use of the Farm land. In keeping with the original concept, the fruit trees were planted in circular rows to resemble a Maze.



*We were fortunate to have some of Dick Morgan's family members at the event*

An orchard allows us to grow fruit for our group home with any extras being sold to help off-



*Thanks to the Helena Chamber of Commerce for their assistance with the groundbreaking*

set the cost of orchard supplies and the upkeep. We are off to a great start with 60-fruit trees and 30-grape vines planted so far. In the center of the orchard, a 2,400 square foot concrete patio with pergola will be added. **(Continued on page 4)**

# West Mont Beneficiary of Generous Support from Evan Smalley



*Evan Smalley*

West Mont President **Ashleigh Heimbach**, Vice President of Development **Arlene Flynn**, and Trust/IT Director **Diana Nelson** recently had a delightful visit with **Evan Smalley** and his friend **Brion Mitchell**. During the visit, Evan presented West Mont with a very generous \$10,000 check. He also wanted to let us know that he has chosen to

leave a bequest to our organization.

Evan stated that starting in 2022, he has set-up through his estate planning, bi-annual gifts of \$50,000 to West Mont which will continue for years to come. We are incredibly grateful to Evan

for choosing to support West Mont and for his and Brion's friendship.

The future of West Mont depends on the continued generosity of friends such as Evan. Bequest gifts are a very important source of income and assist us with future planning and they help us strengthen our quality services and the important programs that we provide for the individuals with disabilities that we serve.



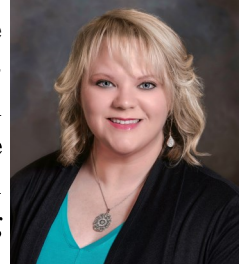
*Brion Mitchell, Evan Smalley & Lori*

**THANK YOU, EVAN!** Your support is much appreciated and will make a huge difference in the lives of so many people.

**9th Annual Winterfest Saturday, December 4, 2021 details pg. 6**

# A Message from the President

For 48 years, West Mont’s staff members, especially our direct support staff, have brought our mission to life. We’ve recently put together a committee consisting of management and direct support staff to realign our mission with our culture. Our mission has never been about programs – it has always been about people and making a difference in a person’s world. The words we use to describe what West Mont does may change from time to time, but the values that ground West Mont’s mission are constant: **Empowering people to succeed by promoting dignity, ability, and independence.**



*Ashleigh Heimbach*

What’s more? We match those words with actions. Parents and guardians can feel confident placing their loved ones in our care, because we’re always going to do the right thing, even when no one’s looking. The people we serve at West Mont are empowered to live their best life when they have consistent support in their lives. It’s often our direct support professionals, who act as that rock, that consistent anchor providing people the stability and confidence to achieve their goals and dreams. Which is why our new vision fits so well: **West Mont will provide innovative approaches to improve the quality of life for individuals with disabilities. Our organization, at every level, will be known for compassionate and exceptional services, while providing life changing opportunities.**

Our new core values also support our mission and vision, shape our culture, and reflect what West Mont stands for. Our values are how we act and behave, together.

- People First**
- Equality**
- Teamwork**
- Integrity**
- Fostering Creativity**



West Mont was born out of ordinary humans following their hearts to show extraordinary compassion for the benefit of others. As we get ready to say goodbye to a tough year, with a lot of loss, we reflect on the impact that we make on the lives of those we touch daily. We hope that you will continue to support us through year end giving, our fundraisers, and through volunteer work.

## *Thank You Board Members for Another Year of Support*

### Operating Board of Directors

David Peretto, Board Chair	Molly Mosness, CWS, Vice Chair	Jessi Bennion, Director
Mike Billings, Director	Loren Brown, Director	Larry Fasbender, Director
Tia Nelson, DVM, Director	Nancy Nielsen, Director	Bret Romney, Director
Debbie Olson, Director	Debbie Schmidt, Director	

### Foundation Board of Directors

Greg Pace, Board Chair	Larry Fasbender, Vice Chair	John Betts, Director
Mike Billings, Director	Loren Brown, Director	Lin Olson, Director
David Peretto, Director	Andrew Pida, Director	

# Getting to know the Residential Director

**Jeff Elliott** has been with West Mont for 34 years and everybody in the organization knows the face when we see him at events, but do we really know Jeff Elliott? I recently interviewed Jeff to get to know the real him. Here are the questions and answers from that conversation:



*Jeff Elliott*

**What is your favorite restaurant in Montana?**

Chubby's or Jaker's

**What are your top 3 favorite movies?**

Star Wars (Original)  
The Hobbit & Lord of the rings Trilogy  
Original Disney Animated Robin Hood.

**What is your favorite and least favorite animal?**

Favorite – Owls  
Least Favorite – Anything that is likely to eat me.

**What is your opinion of people putting**

**ketchup on a hotdog?**

Why ruin a good hot dog?

**What is your favorite Christmas movie?**

Emmet Otter's Jug Band Christmas or Christmas Vacation

**Does the Elliott family have any Christmas traditions?**

Spending Time with Family.

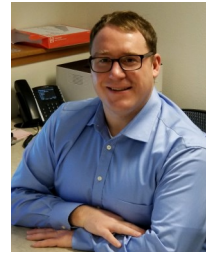
**Would you ever eat a piece of pizza with a fork?**

If the crust doesn't hold up.

**Why have you continued with West Mont for 34 years?**

The relationships developed with the clientele and great staff I have worked with. A sense of family.

**Patrick Sheehan** is Vice President of Operations



*Patrick Sheehan*

# Helping People Find Work in the Community

There are always exciting things happening in Supported Employment. The ultimate goal is to find great job matches for folks in the community. This program helps a job seeker prepare a resume and cover letter, build better interview skills, and find a job. West Mont also provides a free job coach to assist the individual with all aspects of the job. This can include new hire orientation, learning the job tasks, and providing long-term support if needed. We individualize each experience to make sure we find a long-term career for the job seeker *and* the best candidate for the employer.



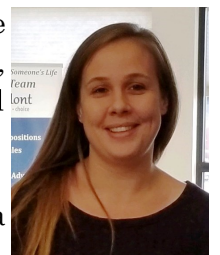
*Kayla & Brent Wiensch,  
1889 Coffee House owner*

Currently, we have 75-clients participating in the Supported Employment program. This includes people like Kayla, who have worked at 1889 Coffee House since it opened in 2018. We have 15-clients actively looking for employment. Although, COVID

has impacted the program with the changing job market expectations, this program continues to be successful in finding good job matches.

West Mont also recently signed a contract with the state for pre-Employment Transition Services (ETS) students. In this program staff work with youths ages 14 until high school graduation on pre-employment skills and activities. This is a really great way for students to discover the type of employment they are interested in and it shows them what life after high school might look like. The only requirement for this is the student has a current Individualized Education Program (IEP) in place. This opens the program up for more to participate.

**Janelle Popp** is the Program Manager in Supported Employment



*Janelle Popp*



# A Spooktacular Halloween at West Mont

We celebrated Halloween a bit different this year because of the uptick in COVID. In lieu of a party at the office, staff members enjoyed visiting all West Mont locations and dropped off assorted goodies.



BLAINE



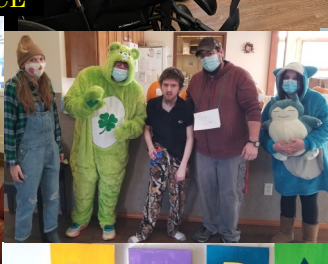
CEDAR APTS.



VASTT



CALDWELL HOUSE & RON'S PLACE



TARA



FLOWER & TRADING CO.



OFFICE



FARM VOCATIONAL



# West Mont In the Spotlight Recognizing Employee Excellence

West Mont is fortunate to have great employees and this year we wanted to recognize the best of the best. Our staff submitted nominations for Employee of the Year (3) & for Manager of the Year. This year's winner for **Manager of the Year** was **Brian Williams**.



*Ashleigh & Brian*

Brian is the Program Manager at the Farm Group Home. He has been at West Mont since 2010.



*Ashleigh & Courtney*

Our three **Employees of the Year** were: **Courtney Johnson** a Direct Support Professional at Tara Group Home

& Apartments. She has been at West Mont since 2012; **Brandon Powell**, an Assistant Program Manager in Supported Employment. He has worked at West Mont for 8-years; and **Pom MacDonald**, a Direct Support Professional at our Townsend Group Home. Pom has been at West Mont since 2009.



*Ashleigh & Brandon*



*Ashleigh & Pom*

The winners were recognized at the September Board Meeting where they were presented with a plaque and a check.

*Congratulations*

## THANK YOU Doering Family Trust

West Mont is very grateful for the generous \$67,500 donation from the **Doering Family Trust**. Years ago, Helena orthodontist, **Dr. Walter Doering** and his wife **Betty**, an active member of our community created a trust for their only child **Betsey**, who was developmentally disabled. This trust was established to care for her needs for the rest of her life. Betsey lived a full life. She had worked at the Village Pancake House, volunteered at St. Peter's Hospital, and attended St. Peter's Episcopal Church. On September 21, 2020, Betsey passed away at the age of 77. The Doering Family Trust Committee has worked diligently this past year to liquidate Betsey's estate and donate to causes that were important to the Doering Family. We wish to thank Betsey's cousins, **Francie Robertson** and **Carolyn and Chuck Doering** and all the Trust committee family members for choosing West Mont as one of the recipients. Per the family's wishes, these funds will go towards West Mont vocational programs. **Thank You again Doering family!**

9th Annual  
*Winterfest*

**Saturday, Dec. 4, 2021**

**9 AM - 7 PM**

**Visit our Tree Lot at**  
**2910 N. Montana Ave.**  
(between Valley Bank & Town Pump)

For the best selection of Fresh Christmas Trees, Wreaths, and Swags, Holiday Planters, Ornaments, Gifts, and more!

**Call: 406-447-3123**

**WESTMONT**  
DIGNITY • ABILITY • INDEPENDENCE

**WESTMONT**  
FLOWER & TRADING CO.  
DIGNITY • ABILITY • INDEPENDENCE  
HELENA, MONTANA 59602

All proceeds benefit individuals with disabilities



# West Mont In the Spotlight Annual Employee Longevity Awards

West Mont held its annual **Employee Longevity Awards** on October 26. Twenty-one individuals were recognized for milestone years. **West Mont President, Ashleigh Heimbach** and **Board Chair, David Peretto** handed out certificates and checks. For those unable to attend, **West Mont Vice President of Operations, Patrick Sheehan** filled in later. The recipients and their years of service include **Lisa Gadaire** and **Carol Hobbs**

for 30-years; **Julie Wilson** for 25-years, and **Mike Maki** 15-years! At 10-years: **Nicole Caban, Mary Caruso, Jodi Hines, Ashleigh Heimbach, Sean Hefflin, Courtney Johnson, Tina Maedche, Dennison Origbo, Jason Pratt, and Raymond VonBergen**; 5-years: **Michael Benefield, Darren Chandler, Jodi Colby, Maribeth Colitzas, Donna Hoekema, Jonathan Jones, and Jennifer Peet. Congratulations to all!**



Carley, Lisa Gadaire, Jim, & Susie

Ashleigh Heimbach & Carol Hobbs



Ashleigh, Mike Maki, & David

Ashleigh, Sean Hefflin & David

Nicole Caban & Patrick

Patrick & Courtney Johnson



Ashleigh, & David

Ashleigh & Jodi Hines

Ashleigh, Tina Maedche & David

Ashleigh, Mary Caruso & David



Ashleigh, Jodi Colby & David

Ashleigh, Michael Benefield & David

Ashleigh, Jennifer Peet & David

Darren Chandler & David

**West Mont Locations**

Blaine Work Services:  
406-447-3119  
Caldwell House  
Cedar Apartments  
Farm Group Home  
Farm Vocational:  
406-227-7565  
Flower & Trading Co.  
406-447-3123  
Hillside Group Home  
Humbolt Apartments  
Lewis & Clark Duplex  
Melodee House  
Ron's Place  
Supported Employment:  
406-447-3111  
Tara Group Home  
Tara Apartments  
Townsend Group Home  
VASTT  
For more information call:  
406-447-3100 or email:  
wmoffice@westmont.org  
Visit our website:  
www.westmonthelena.com  
Follow us on [facebook](#)



Main Office  
2708 Bozeman Ave.  
Helena, MT 59601

Non-Profit Org.  
U.S. Postage PAID  
Helena, MT 59601  
Permit No. 226



## Our Christmas Wish List



As we gear up for the holiday season, we hope to make it a memorable one for our clients. All are low-income and many have no family or family members living nearby. Between the continued difficulties of dealing with COVID and now escalating prices on even the most basic of necessities, it has been another challenging year. The following items have been requested by our clients and/or are needed at our group homes:

- |                        |                         |  |
|------------------------|-------------------------|--|
| 2-Microwave Ovens      | Dryer                   | Gas/Fuel Gift Cards- We are WAY over budget        |
| 3-Electric Shavers     | Everyday Silverware     | Utensils/Silverware for everyday                   |
| Arts & Crafts          | Full-Size Dresser       | Vacuum Cleaner                                     |
| Board Games            | Skillet Pans            | Walmart Gift Cards                                 |
| Burger King Gift Cards | Haircut Gift Cards      | Washing Machine                                    |
| Carousel Gift Cards    | Hay for Farm            | Women's Body Wash                                  |
| Cetaphil Cleanser      | McDonalds Gift Cards    | Women's' Tops (Med., Lg., XLG)                     |
| Cetaphil Lotion        | Measuring Cups          | Women's Pants size 14 short                        |
| Chest Freezer          | Men's Body Wash         | Women's Slippers (Med.)                            |
| Coffee Gift Cards      | Men's Slippers (Lg/XLG) | Work Gloves for Farm all sizes                     |
| Craft Supplies         | Movie Passes            | XLG Women's Shirts                                 |
| Cupcake Pans           | Pots & Pans             | Floral and/or country décor for 2-women's bedrooms |
| Dairy Queen Gift Cards | Poultry Feed            | Leads for our Farm Goats                           |
| Dollar Tree Gift Cards | Saucepan                |  |



Gifts may be dropped off at the West Mont main office at 2708 Bozeman Ave.in Helena. To arrange for pick-up,please contact us at 406-447-3100. **Thank you** for helping to make the holidays brighter.