

Operating the Wave Rife Resonators

Operating any of the Wave range of resonators is quite easy thanks to very user-friendly functions. Its operating sequences are very much the same as the interface of a cell phone. The operating steps are also intuitive as each next step is set to be the logical consequence of the previous step.

Maintenance:

Your Rife Wave Resonator is an expensive highly sophisticated and sensitive electronic device. Please treat it as such.

Keep it clean and dry. When not in use store preferably in a waterproof container. Keep liquids away from the device. Clean device, electrodes and cable regularly with a slightly moist soft cloth. Unplug all external power sources when cleaning. Don't get moisture into any openings. Only charge the rechargeable battery for 3 hours maximum. Although the accessories are easy to replace all over the world one must however replace accessories with ones of the same specification. See the correct specifications on the back page of this instruction booklet.

Guarantee

Please note that although there is a 2-year technical guarantee on the instrument there is no guarantee on the consumables such as the cables, hand electrodes, plugs, battery, and charger. Please check if everything is in good working order when delivered and contact your supplier within 48 hours after delivery to lodge a fault complaint so that any faulty component could immediately be repaired or replaced.



The Wave resonators' interface makes use of internationally recognizable icons/avatars to depict a specific required action.

+ Means to “increase intensity” - Means to “decrease intensity”



Means “to start, action, execute, run a treatment”



Means to “pause an action”



Arrow facing to the right means to “go to the next command”



Arrow facing down means to “scroll down”



Arrow facing upwards means to “scroll up”

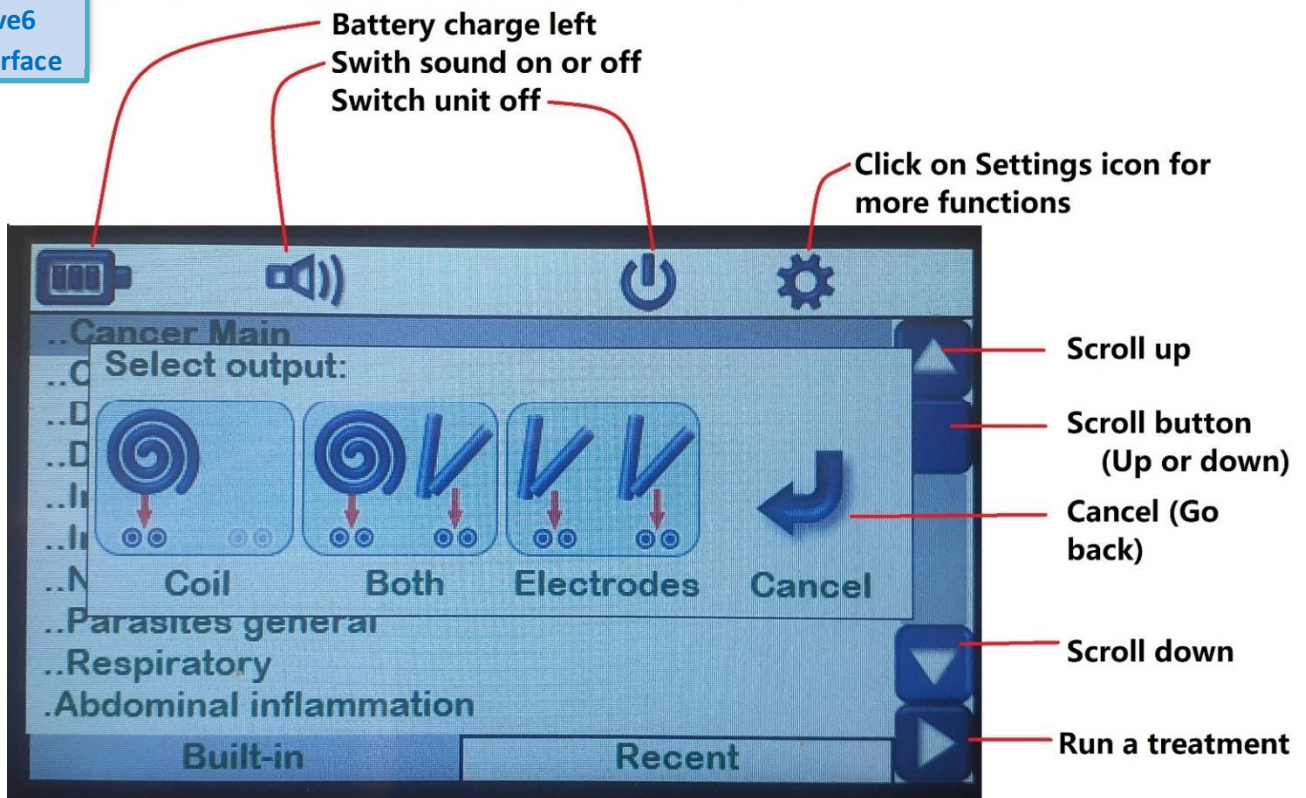


The “return arrow” icon means “to go back/exit”



Press on the “Settings” icon on the Wave6 to open more commands.

Wave6
interface



Adding treatments: One can add one's own treatment on the Wave Resonators with the Wave Software. See www.waveresonator.com for the link to the free software download and instructions to the installation. The Wave5 and Wave6 also offer a function to add one's own treatment directly on the instrument.

Just press on the “Setting” Icon on the Wave5 or Wave6 and then press on “Add program” and commence with the steps.



For more information scan this QR Code:

Just follow these steps to commence a treatment:

1. Switch on power by pressing the “On” Button on the side of the unit.
2. Select programme/treatment on display by pressing the down arrow.
3. When treatment is selected press the “Play” button ▶.

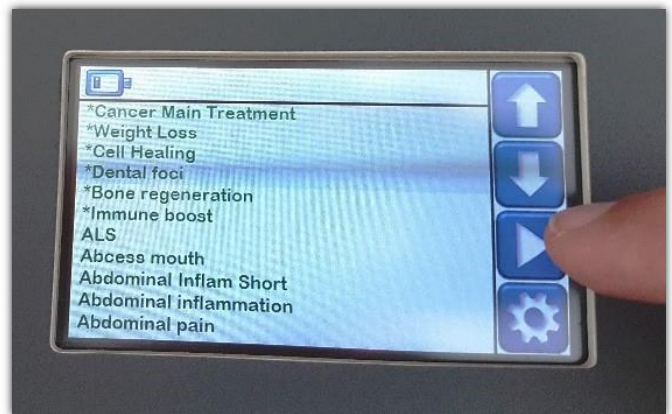
Name of treatment and duration will appear on the screen. Press the “Play” ▶ icon again to activate treatment. Select treatment application: In the case of the Wave6 select between Hand electrodes or coil (Beamer Healthpad).

4. **Repeat function.** Press the “Play” ▶ button for about 2 seconds until the repeat function is activated. Select how many times this specific treatment needs to run. The maximum repeats are 9 times.

5. Increase or decrease the intensity of the current by pressing either the “+” or “-” icons

6. Hold an electrode in each hand (See Therapy Manual in this regard) or connect the Beamer Healthpad.

7. One can press the “Pause” (||) icon to temporarily **pause** the treatment and press the “Play” ▶ icon when treatment needs to be resumed. When the treatment’s sequence ends, the device will automatically switch off after a few minutes if no other selection is activated. Hold an electrode in each hand. Set intensity until the vibration of the resonance waves is COMFORTABLY felt in both wrists. The treatments on the device commence with low frequencies and gradually rise to higher frequencies. One does not feel the frequencies with the Healthpad as it radiates a Pulsed Electromagnetic Field.



Wave Resonator Accessories and Peripherals

One of the several advantages that the Wave Rife Resonator range has over other Rife frequency generator attempts is that you can travel anywhere in the world and will be able to locally source the accessories needed to apply treatments if they are damaged or lost.

Charger adapter

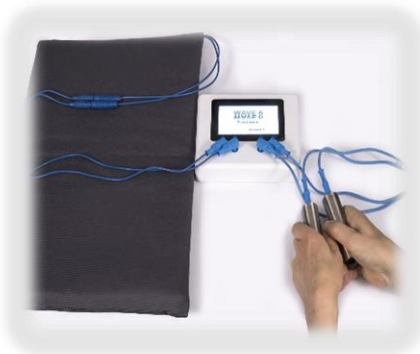
Use only a 5-volt USB 2-ampere charger. Just buy locally a charger with these specifications when visiting other countries that have different inlets than the default EU charger that comes standard with each Rife Wave Resonator bought directly from Wave Technologies. Please do not use a fast charger like one gets with many cell phones.



Charging and data transfer cord.

Use only a "USB 2.0 Cable Type A Male to Micro-B" charging and data transfer cord. Please be careful when inserting the plug-ends into the charger and Wave unit. If the does not want to go into the charging port of the Wave unit turn the plug around and try again. Do not force it in. This cord can also be used to transfer data from a computer to any Wave model.

Electrode cables.



The electrode cables are transferring the current to either the hand electrodes or to a Healthpad. The Wave4 electrode cables have an RCA connector connected to one side and two 4 mm banana plugs on the other side. The other Wave Rife resonators are using a set of two standard 4mm banana plug test cables that are internationally available at electron shops as electrode cables. Most of the time when there are any technical problems with a loss of current output from a Wave unit then it is a loose connection with the electrode cables.



Battery:

The Wave resonator range can run safely on either its rechargeable battery or directly on mains (Either 110 or 220 volts) through the 5-volt charger adapter power. One can also charge the Wave from a computer by connecting the Wave unit with the charging cable to a switched-on computer.



The Waves use a "Model 18650" 3000 mAh, 30A, 3.7V "**Uncapped/Unprotected**" rechargeable battery. Charge the battery for 3 hours by connecting the charging cable and charger to an electrical power socket. It is best that the power is completely depleted before recharging. The battery can easily be replaced by unscrewing the lid underneath the unit. Ensure that the battery poles match the positive and negative placements when inserting the battery.

Testing.

The **Wave4 Kompak** comes with a useful tool called a "Cable Tester". This tester allows you to check if your cables and plugs are still functioning properly. If the light on the tester turns on, that means that there is indeed a current flowing through the cables. However, if there is no current, it may indicate that there is a loose connection either in the RCA connector or the two banana plugs. If you encounter this issue, any electronic repair shop should be able to fix it for you. The Wave5 and Wave6 have a built-in "tester". Connect a cable in a loop to the Wave5 or Wave6. Press the "Settings" icon and press "Test Continuity". A "beep" noise means the current is indeed flowing.

