



Montessori of Plainfield  
 14710 Naperville Road Suite 104  
 Plainfield, IL 60544  
 (815)254-0136  
[montessoriofplainfield.net](http://montessoriofplainfield.net)  
[montessoriofplainfield@gmail.com](mailto:montessoriofplainfield@gmail.com)

*Key Dates in January*

- **January 1st:** Tuition Due
- **January 8th:** Classes Resume
- **January 10th:** Yoga
- **January 15th:** MLK Jr. Day — NO SCHOOL
- **January 17th:** Yoga
- **January 22nd:** Pj Day
- **January 23rd:** Crazy Hat Day
- **January 24th:** Sports Day
- **January 24th:** Yoga
- **January 25th:** Mismatch Day
- **January 26th:** Spirit Day
- **January 26th:** Scholastic Book forms due
- **January 31st:** Registration forms for 2024-2025 School Year Due
- **January 31st:** Yoga

**Inside this issue:**

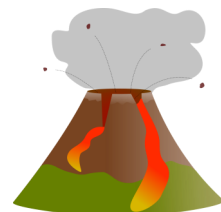
Teachers Tidbits	1
Extended Day Updates	2
Fun Fridays	3
Office Reminders	4
Thank Yous	5
Sponsors	5

## Tidbits From The Teachers



We wish you all a very Happy New Year! We hope you had a joyful holiday season and that the children are excited to return to school to share all of their special holiday fun with their class. They are sure to bring back a new energy level that is ready to be challenged with new and more complex works.

The study of our planet Earth will continue as we introduce the inner layers and the occurrences of volcanoes. We will discuss eruptions and rocks that explode from volcanoes. Learning the names of the many rocks can be a challenge itself!



We will also be studying penguins this month. Learning about what they eat, where they live, how many types of penguins there are, and many new vocabulary words. Our kindergarten students will be giving their first oral presentations to the class about a penguin of their choice.

It is during this time of the school year that we notice children freely choosing works that meet their inner needs and working with immense concentration. Maria Montessori called this phenomena “normalization.” The children learn to work in a prepared environment while the teacher enjoys watching them unfold their talents.



# Extended Day Updates



## Art Appreciation



sweetclipart.com

This month we will be exploring the works of Claude Monet. Our lessons will be focused on impressionist paintings, based on the founder himself!



## SCIENCE

*Let's start our new year by learning about our planet, Earth. We will be learning about the Earth's gravity, magnetism and rocks and all the things that make our planet awesome.*



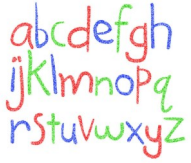
## Math Madness

$$\begin{aligned} .6 &= \frac{6}{10} \\ .23 &= \frac{23}{100} \\ .956 &= \frac{956}{1,000} \end{aligned}$$

During the month of January, we will focus on the concept of greater than, less than, and equal to. Our goal will be to identify these new math symbols and the meaning behind them. We will begin using hands on manipulatives to give a clear visual on which number is bigger or smaller in quantity. We will also incorporate the Montessori math beads, stories, poems, and number lines prior to introducing the symbols.



# Phonics Fun



This month we will continue working on our consonant sounds and letters. We love making crafts that match our letter of the week and hearing songs about them.



## Fun Fridays!



January will be all about challenging ourselves. We will be playing a variety of “minute to win it” games. This has always been a favorite with the children in the past. Teaching teamwork, good sportsmanship, perseverance, and so much more will be learned through game play.



## Reminders from the Office

- ✍️ **2024-2025 registration forms and fees** are due back to the office by Wednesday, January 31st. As always, first priority for registration is given to returning students and/or incoming siblings. We will open registration to the public February 2nd.
- ✍️ **Monthly tuition.** Tuition is due on the 1st of each month. There will be a \$20 late fee if payment is received two days late. Please remember to return your tuition envelope with your tuition check.
- ✍️ **Outerwear** As the weather changes and starts to get colder, please send your students to class with winter coats, hats, gloves/mittens, scarfs, boots and snowpants. We will continue to go outside each day, weather permitting.
- ✍️ **Please label** all of your child's jackets, hats, mittens, etc. There are so many in our coat room. This makes it easier for everyone.
- ✍️ **Scholastic book orders** for this month are due by January 26th. Please remember all orders are due online. The teachers are able to add to their classroom library because of the many bonus points earned each month!
- ✍️ **Severe weather closings.** In case of severe weather, please visit our Facebook page or The Emergency Closing Center website. You can check emergency closings at [www.emergencyclosings.com](http://www.emergencyclosings.com)
- ✍️ **Calling the school when your child will be out sick:** When you are calling your child in, please include a brief description of your child's symptoms. It's especially important for our staff to be aware of any illnesses that are contagious.







The teachers and children would like to extend a huge thanks to all those who donated items to our school during the month of December. Your generosity contributes to the success of our school. Thanks so much!

- Alex- Bells, googly, eyes, pony beads
- Ace- Hobby Lobby gift card
- Jacob- Chalk markers, Sharpies
- Stevee- Popsicle sticks, pony beads, googly eyes, bells, foam stickers, Sharpies, ribbon, ornament craft kit
- Charlie- Tissue paper
- Amelie- Sharpies, tissue paper
- Benjamin- Cardstock, popsicle sticks, Sharpies
- Jack & Kate- Tissue paper, googly eyes, ribbon, ponybeads, tape
- Michelle- Bead kit, Googly eyes

Special Thank You to all the families that donated and participated in the Adopt-A-Family. The generosity was overwhelming.

*Interested in sponsoring our Newsletter for this school year? This is a great way to advertise your business. Our newsletter is read by approximately 30 families each month. Please contact Nikki Carchedi at [Montessoriofplainfield@gmail.com](mailto:Montessoriofplainfield@gmail.com) for more*



**MILESTONE PEDIATRICS**

Michael J. Reicherts, MD  
Holly Loux, MD  
James R. Pera, MD

4043 S. Route 59  
Naperville, IL 60564

After Hours Emergency: (630) 364-1677

Laurie A. Strausberger, CPNP  
Kerry Brennan, CPNP  
Janel Hoffman, CPNP

Phone (630) 420-4275  
Fax (630) 420-8957

[milestonepediatrics.net](http://milestonepediatrics.net)



**Angela Chastain, PsyD**  
Licensed Clinical Psychologist  
Supervisor Psychological Testing Services

24402 W. Lockport St. Suite 224  
Plainfield, IL 60544

24024 Brancaster Drive  
Naperville, IL 60564  
[angelachastain@doctoragor.com](mailto:angelachastain@doctoragor.com)

Phone: 630-621-5824  
Fax: 815-230-3652  
[www.DoctorAgor.com](http://www.DoctorAgor.com)

PRINTING



**Off The Press**

LASER ENGRAVING

SINCE 1982

BUSINESS FORMS  
STATIONERY  
BUSINESS CARDS  
BROCHURES  
BOOKLETS  
NEWSLETTERS  
WEDDING INVITATIONS  
RUBBER STAMPS  
TICKETS  
POSTERS  
LAMINATING  
AND MORE...

**DIGITAL COLOR COPIES**

*We will print your invitation files from Esty, Flicker, etc...*

*Recognition Awards, Trophies, Signs, Plaques, Your Wine Bottles & Gifts*



PLAQUES



TROPHIES



GLASS & ACRYLICS



GIFTS



NAME BADGES

www.offthepressprinting.com  
16041 S. Lincoln Hwy (Route 30) • Plainfield, IL 60586 • 815-436-9612 • Fax 815-436-6101



**SYMMETRY**  
CHIROPRACTIC & ACUPUNCTURE

Dr. Timothy J. Erickson

24115 W. 103rd St., Suite A  
Naperville, IL 60564  
[drtimerickson@gmail.com](mailto:drtimerickson@gmail.com)

Phone: (630) 983-1805  
Fax: (630) 983-1845

[www.DrTimErickson.com](http://www.DrTimErickson.com)



PLAINFIELD | 815.267.9600  
12315 Rhea Drive | Plainfield, IL 60585  
[goldfishswimschool.com](http://goldfishswimschool.com)