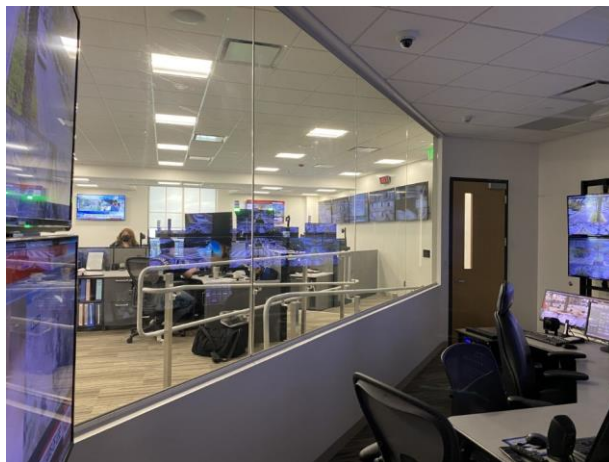


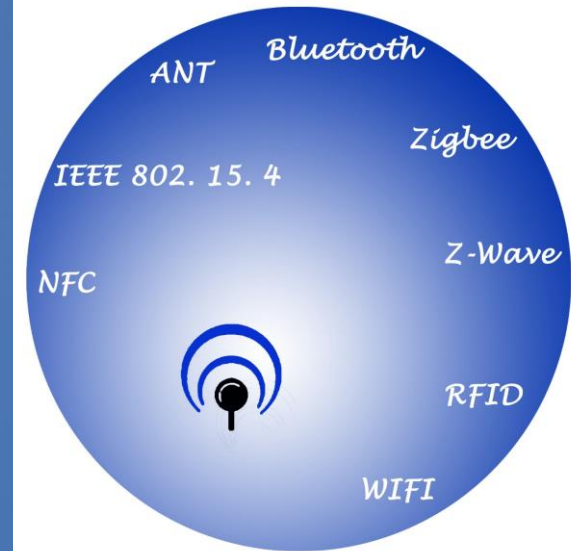


DenseNetworks.com



How Many Networks?

Capacity, Coverage, Compliance

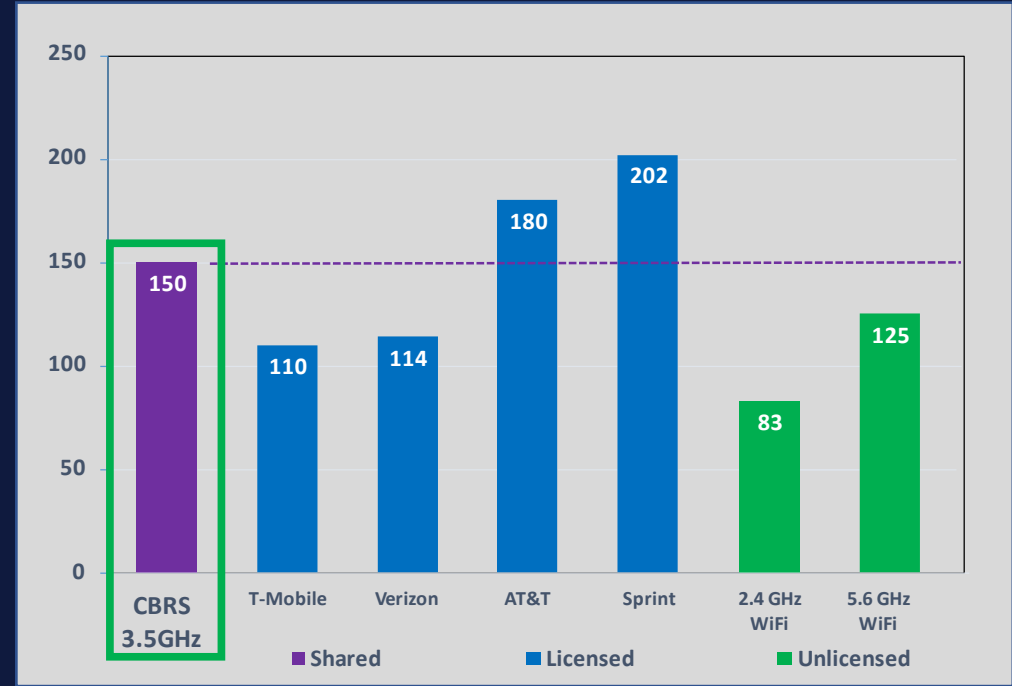




What is Private Cellular/CBRS?

- It is a cellular network that leverages a private core element instead of connecting to AT&T/VZ/TMO Public Wireless Network.
- Provides connectivity for enterprise members and their applications using 150 MHz of spectrum in the 3.5GHz Range – “CBRS”
- CBRS = Citizens Broadband Radio Service or LTE Band 48: Up to 150 MHz Fully Dedicated to Single Venue, Enterprise, or Community
- LTE Based Technology, Full Compatibility with Global Mobile Networks
- 15 Channels up to 160 Mbps Each
- 5G Friendly

Enterprise 5G



Basic Use Cases

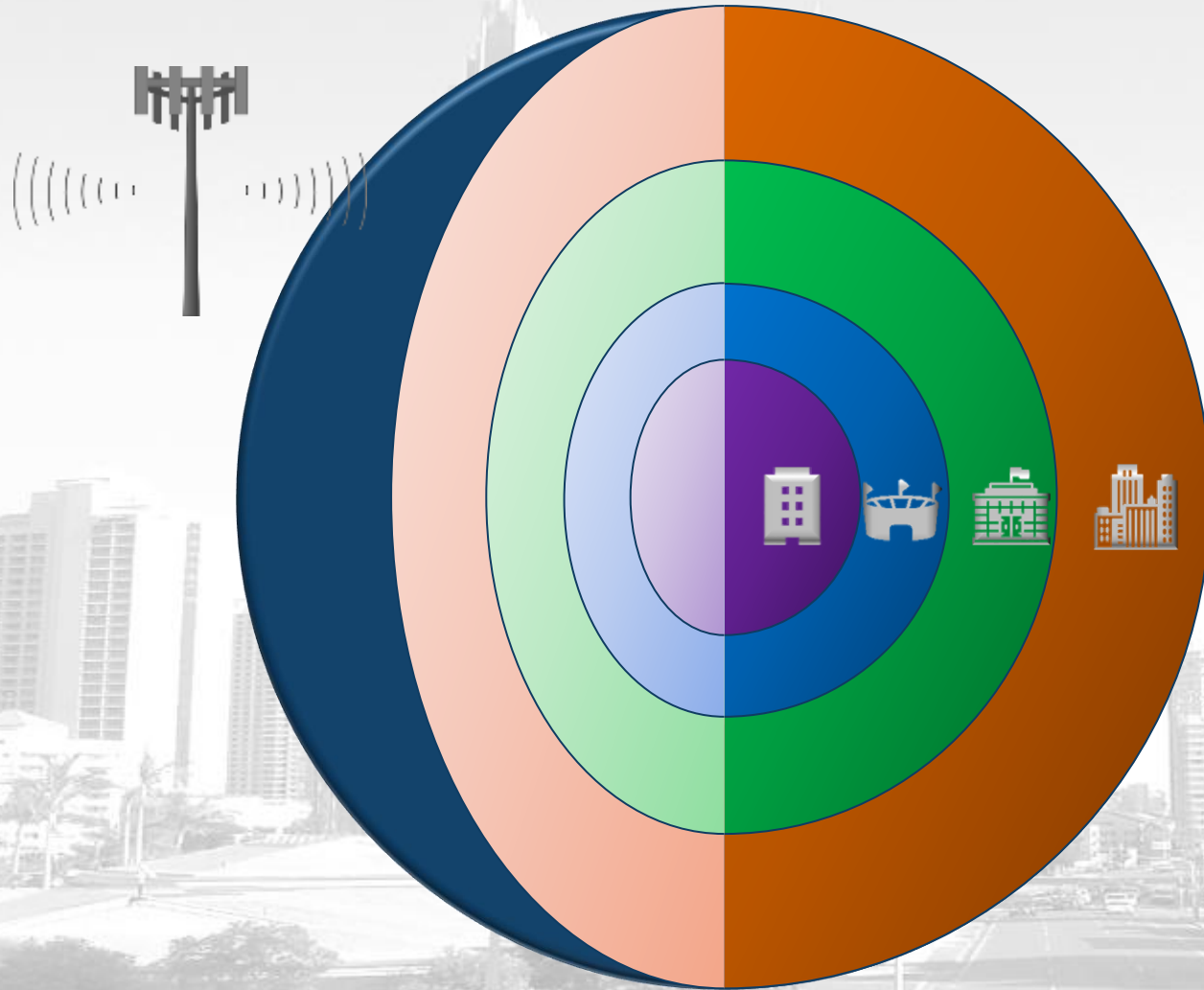
- Fiber Alternative for Backhaul and Transport, Wi-Fi Offload, Network Densification, Low Latency Performance, User Mobility, Voice Services

↑ Previous

4

Next ↓

Mobile Convergence



CITY

Densification



CAMPUS

Coverage



VENUE

Capacity



BUILDING

All of the above

Wireless Infrastructure Deployments

Multi-Operator Venue Wireless Solutions

Indoor

Highly efficient end-to-end wireless network solutions for stadiums and buildings.



Outdoor

Distributed outdoor wireless distribution systems for high-density transit & metro areas.



Metro & Smart City

Macro Business

Premium RF transmission line solutions for macro infrastructure providers.





Bridge the Digital Divide & Extend the Smart City Foundation

Build a private LTE/5G wireless network broadcast from city and school facilities

Secure Network

Monitors the wireless network, all connected gateways and private LTE enabled devices. Data stays local to the network to ensure control.





City of Tucson Use Case Examples:

↑ Previous



Park Wi-Fi



City Smartphone Service



Analytics for City Pools



Mobile Data Terminal Service



City Mobile Tablet Service

9



Digital Divide Broadband



In-Building Neutral Host



City Transportation & Service Efficiency



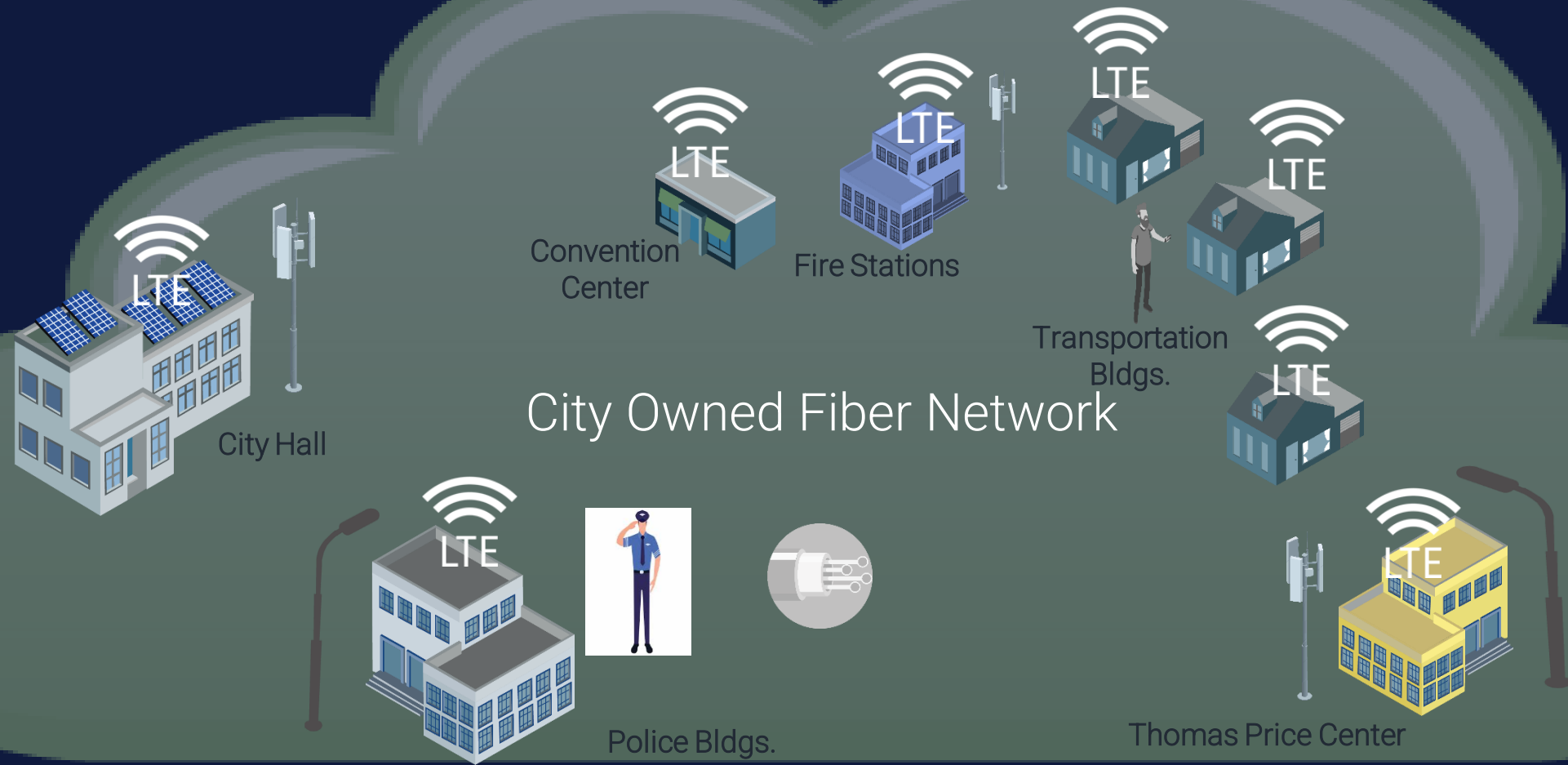
Traffic Efficiency

Next ↓

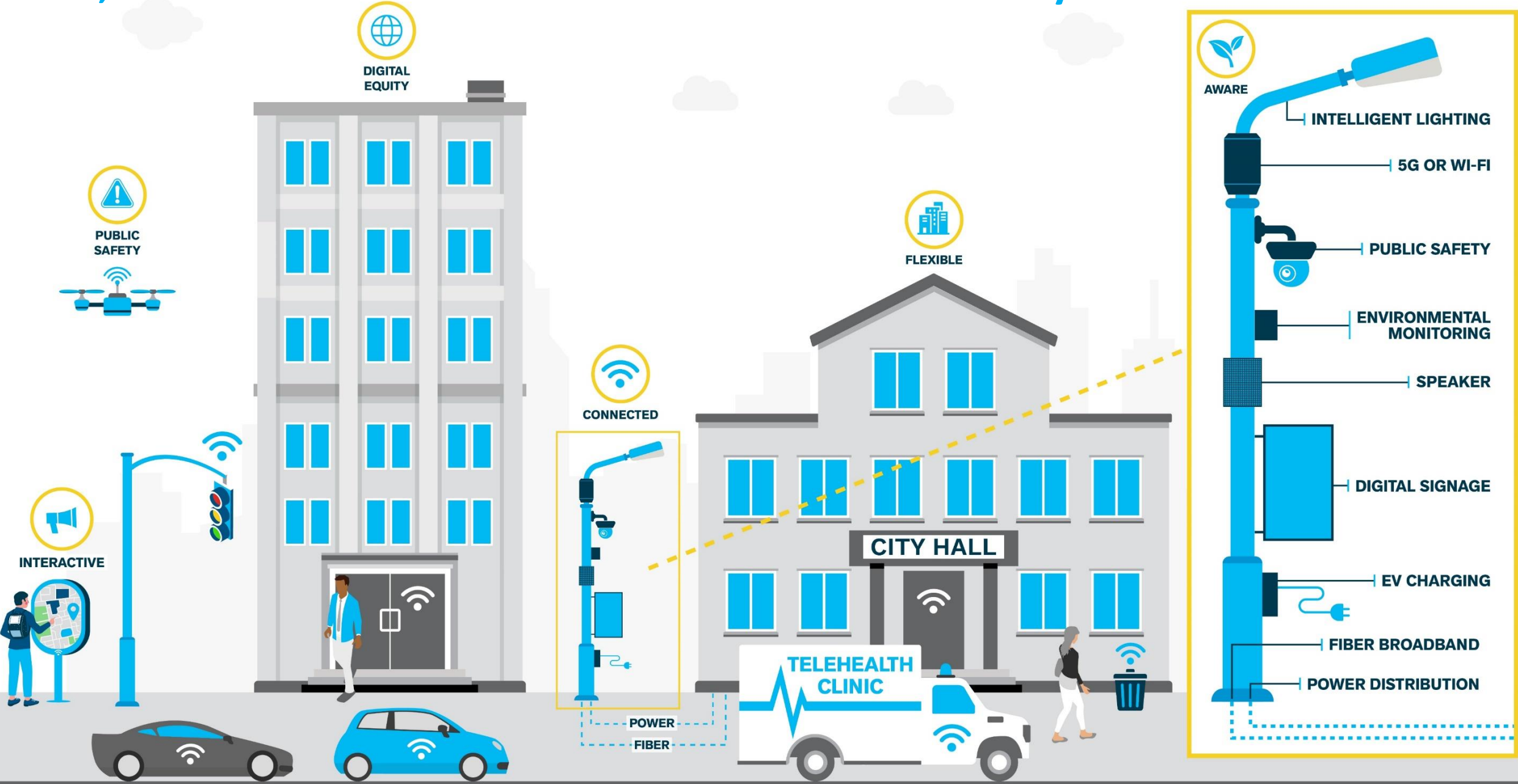
This is Geoverse



This is Geoverse



Fiber, Power & Poles are the Foundation for a Smart City



“Let’s Get Some 5G” (or Italian)



2018



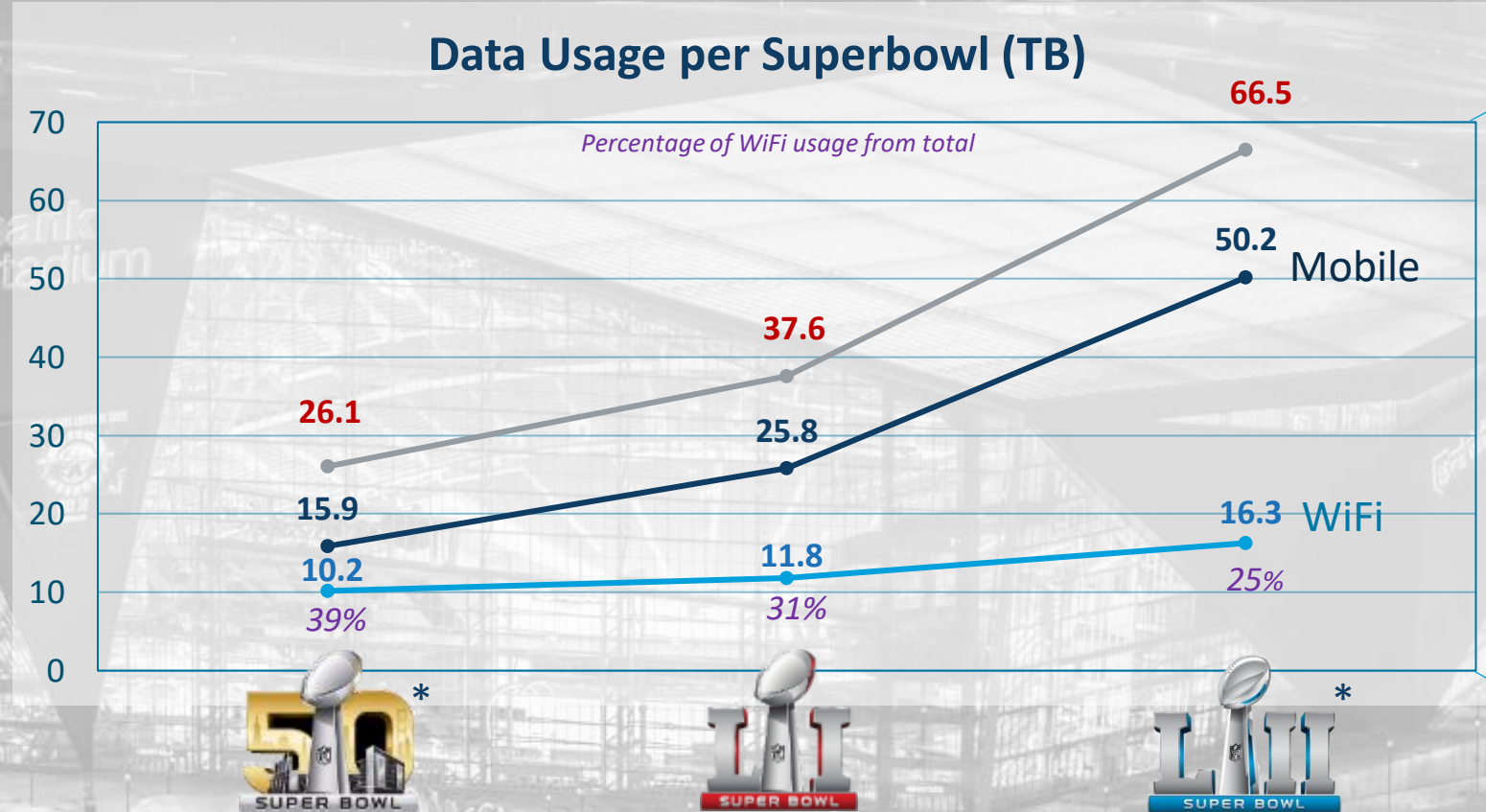
2019



2020



Mobile/Wireless Bandwidth Demand



* JMA Wireless in-building solutions used for mobile traffic

SOURCES:

- Data usage at Super Bowl 52 grows 48% as social media use skyrockets <https://www.techrepublic.com/article/data-usage-at-super-bowl-52-grew-48-as-social-media-use-skyrockets/>
- Super Bowl 51 makes digital history with record-breaking data usage <https://www.techrepublic.com/article/super-bowl-51-makes-digital-history-with-record-breaking-data-usage/>
- AT&T, Verizon and Sprint see a combined 50.2 TB of cellular traffic for Super Bowl 52 <https://www.mobilesportsreport.com/2018/02/verizon-sees-18-8-tb-of-cellular-data-used-at-super-bowl-52/>
- Super Bowl fans use a record 10TB of data on Levi's Stadium WiFi network, up 63% from 2015 <https://www.geekwire.com/2016/super-bowl-data-usage/>



OMNIA

PARTNERS

POWER. ACCESS. TRUST.

**OMNIA
PARTNERS
PUBLIC SECTOR
COOPERATIVE
PROGRAM**



- Competed Contract satisfies Public Solicitation Process
- Kansas City – Lead public agency
- Products & Services eligible
- National Volume
- 23 years and 20,000 cities / agencies
- No Cost / Non-Binding
- Best in Class Vendors
- Best Overall Value

Key Benefits:

- **No RFP or Solicitation required**
- **Flexibility to choose suppliers and installation partners**
- **Shorten timeframes from concept to completion**
- **Great pricing resulting from competed contract**