

# XENOPHON COLLEGE LONDON

School of Psychology



**XENOPHON**  
COLLEGE LONDON



UNIVERSITY OF  
**CHICHESTER**

ACADEMIC PARTNER

## FLEXIBLE LEARNING

You can choose between 2 modes of delivery when enrolling , thanks to our **Flexible Learning** which offers a variety of different learning opportunities to suit your needs, commitments, lifestyle and learning style.

**Distance learning**, giving you the flexibility to fit your study around your personal and work commitments, perfect for a busy lifestyle or when learning on campus is not an option, yet you still want the real-time experience. Study and learn through live online lectures, live webinars, as well as guided independent study delivered via our learning platform. You'll also have access to all the services including the library, student support services and IT.

**A hybrid** mix of distance learning where you can study and learn through live online lectures, webinars and resources to enhance and facilitate study, as well as a period attended in person in the UK\*\* combining the best of both worlds and the flexibility of distance learning to achieve a study/life balance.

\*\* Subject to visa status and requirements.

---

## YOUR LEARNING ENVIRONMENT

### **Our virtual learning platform will be a fundamental part of your studies.**

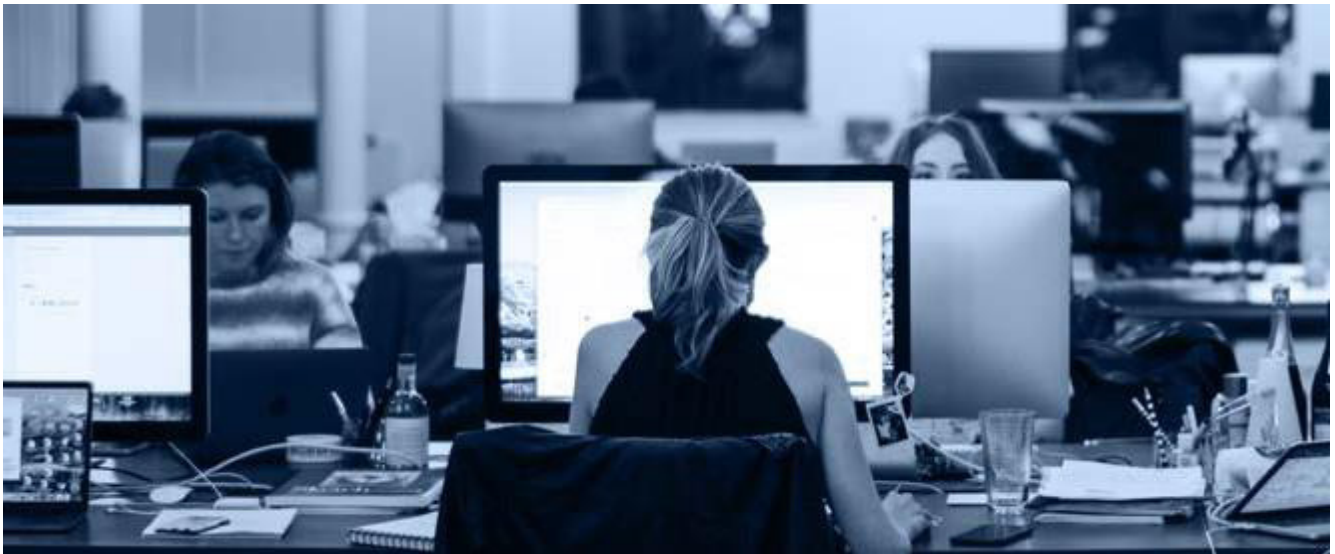
From learning material to virtual classes to attend you will find everything you need to learn.

Follow live lessons, interact with peers and professors, and submit coursework all in one place.

Available at your fingertips, whenever you want, wherever you are.

We partnered with Kaltura (leading Education Video Platform) to provide accessible content for all, including captions, screen reader support and accessible controls which enhance engagement and overall the learning experience for those with learning disabilities.

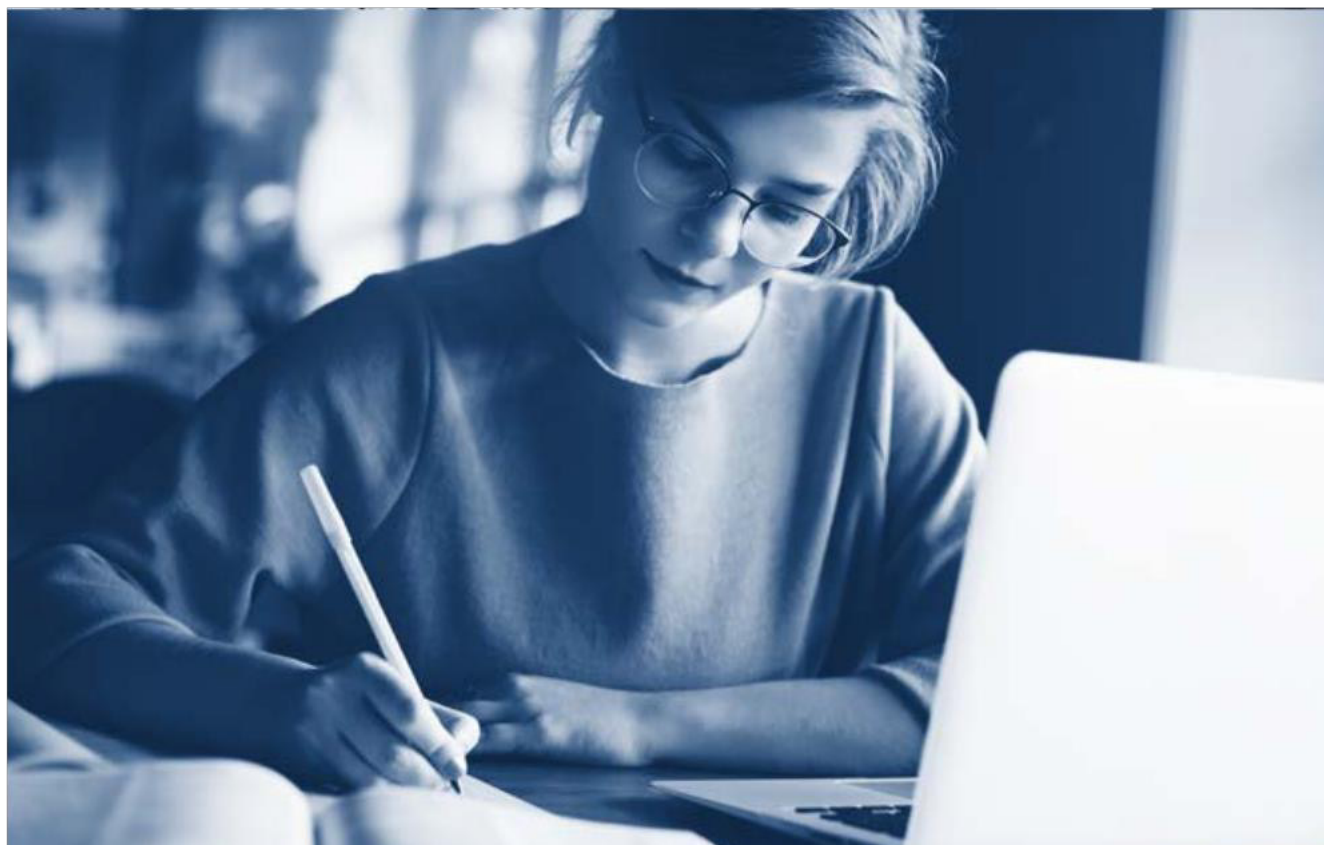
---



# BA(Hons)

---

## Psychology



**XENOPHON**  
COLLEGE LONDON



UNIVERSITY OF  
**CHICHESTER**

ACADEMIC PARTNER





## THE PROGRAMME

---

XCL provides an interactive, innovative learning experience that promotes the acquisition of in-depth knowledge of core subjects in Psychology.

Students will have the opportunity to be part of a wider global academic and professional community. The experiential learning activities and the critical thinking approach of our teaching will equip students with the academic and practical skills required in competitive jobs.

At the School of Psychology, courses are delivered to both in-person students and distant learners.

By means of seminars, traditional lectures, labs, workshops and team challenges, students are encouraged to deepen their knowledge in a way that matters while and once they graduate.

At the same time, by fostering a practical approach, students have the chance to build interpersonal, transferable skills throughout the programme.

- 
- ✓ The assessment strategy includes individual and group projects and presentations, essays and literature reviews
-

- **ACADEMIC WRITING**

Students will be exposed to academic writing rules and techniques, including effective and extensive reading strategies, effective participation in seminars and delivery of presentations, and effectively listening to and recording information from lectures.

- **ENGLISH LANGUAGE SKILLS**

Learning how to master a language is no easy task. During this course, students will have the opportunity to understand the rules of the English language and apply them to a variety of contexts and situations, including academically.

- **DIGITAL SKILLS**

Through this course, students will be exposed to critical digital skills needed for their academic courses, ranging from online safety to how to communicate through digital means.

- **ANALYTICAL AND PROFESSIONAL SKILLS**

This module aims to develop conceptual and practical skills to enhance students' ability to study, research, and gain employment in the field of Psychology.

- **HISTORICAL PERSPECTIVES IN PSYCHOLOGY**

This module is an introduction to the world of psychology in order to understand the scientific underpinnings of psychology as a discipline, its historical origins, development, and limitations. The module will orientate the students towards some of the key concepts and debates, and it will briefly touch on all the other modules in order to provide a comprehensive introduction to the programme.

- **INTRODUCTION TO PSYCHOBIOLOGY**

This module is a fundamental core module of the course. It is designed to be an introduction to principles in Psychobiology and it aims to develop knowledge and understanding of the role of the brain and nervous system in psychological processes including language, memory, emotion, stress, psychopathology, and sensory processes.

- **INTRODUCTION TO RESEARCH METHODS**

This course introduces basic statistical tests and common research designs employed in psychological experimentation. There is particular emphasis on the execution and reporting of experiments, understanding, and interpreting the output of descriptive and inferential statistical tests, and how to use statistical computer software packages such as SPSS or R.

# MODULES

## YEAR 1

Biological and Comparative  
Approaches to Psychology

Clinical Assessment and  
Diagnostic process

Design and Analysis of  
Psychological Investigations

Ethical and Professional Skills  
for Psychologists

Information Processing and Cognition

Philosophical Foundations of Psychology

Psychology of the Person

## YEAR 2

Biological Psychology

Cognitive Psychology

Developmental Psychology

Personality and Individual Differences

Qualitative Research Methods

Quantitative Research Methods

Social Psychology

## YEAR 3

Cognitive Neuroscience

Group Dynamics

Health Psychology

Psychodynamic Psychology

Psychology of Gender Diversity and Sexuality

Dissertation (Research Project)



---

## WHO IS IT FOR?

Everyone interested in a career in Psychology in a national and international context.

The Programme is designed for a career in academic, clinical or industry-based contexts. The course includes several opportunities to broaden the students' expertise by means of theoretical and more practical modules.

Entry requirements can be found on our website.

If English is not your native language, you will be required to provide proof of your English.



**Download the full programme.**



**Download tuition fees info.**

**Entry points** have been designed to be flexible:

September 23 – November 23 – January 24 – March 24

**For more information**, please contact our Admissions team at [internationalrecruitment@xcl.ac.uk](mailto:internationalrecruitment@xcl.ac.uk)

**Information on tuition fees** can be found on our website or at [internationalstudents.rome@xcl.ac.uk](mailto:internationalstudents.rome@xcl.ac.uk)

---

Xenophon College London is an Academic Partner of the [University of Chichester](#), a Top 30 UK University according to The Guardian 2021.

Courses are validated by the University of Chichester and lead to University of Chichester degrees.

Strengths of our teaching model:

- Relevant teaching
- Advance digital skills for innovation
- Effective leadership for flexible learners
- Interdisciplinary approach
- Tailoring tutors
- Live for an international community

For more information, contact us at : [internationalrecruitment@xcl.ac.uk](mailto:internationalrecruitment@xcl.ac.uk)



**XENOPHON**  
COLLEGE LONDON



UNIVERSITY OF  
**CHICHESTER**

ACADEMIC PARTNER