

# MODULE 1 - French Twist

---




## Tools

<b>TOOLS</b> TAIL COMB Metal	<b>TOOLS</b> STYLING COMB	<b>TOOLS</b> DETANGLING BRUSH	<b>TOOLS</b> BOBBY PINS GRIPS	<b>TOOLS</b> ROUND BRUSH BOAR BRISTLE
------------------------------------	------------------------------	----------------------------------	-------------------------------------	---

<b>TOOLS</b> LARGE HAIR PINS U-SHAPE	<b>TOOLS</b> LARGE BOBBY PINS GRIPS	<b>TOOLS</b> Denman Brush 7 ROW	<b>TOOLS</b> HAIR PINS U-SHAPE	<b>TOOLS</b> Mason Pearson Smoothing Brush
--	---	---------------------------------------	--------------------------------------	--

---

## Skills

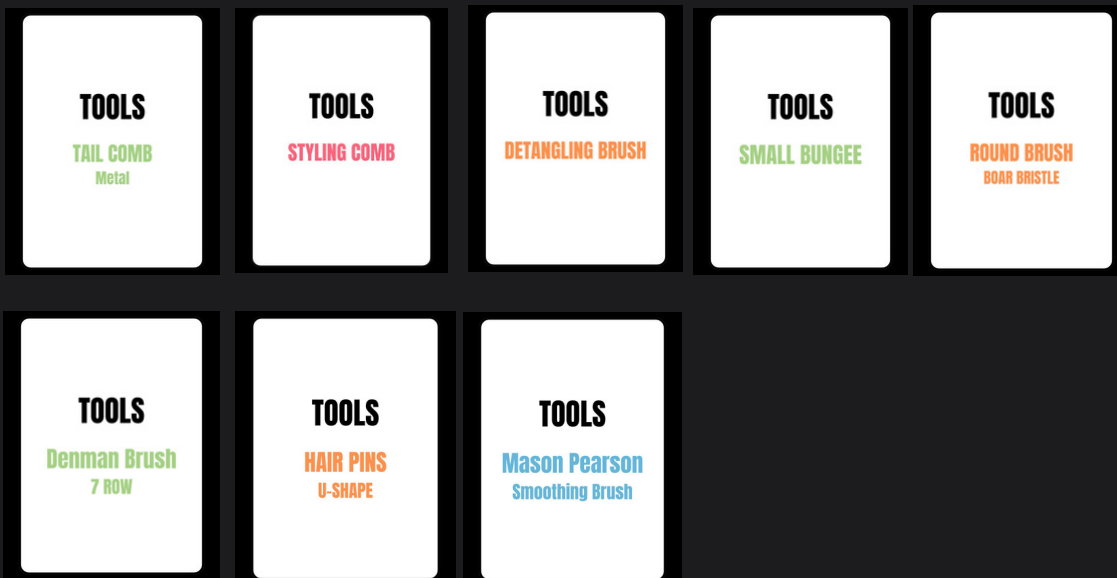
<b>SECTIONING</b> HORIZONTAL 	<b>SECTIONING</b> HORSESHOE 	<b>SECTIONING</b> VERTICAL 	<b>DIRECTIONAL BLOWDRY</b> VOLUME	<b>DIRECTIONAL BLOWDRY</b> NO VOLUME
--	---	--	--------------------------------------	---

<b>BACKCOMBING</b> ladder -facing	<b>BACKCOMBING</b> volume	<b>BACKCOMBING</b> connect	<b>BACKCOMBING</b> volume	<b>BACKCOMBING</b> hairline	<b>BACKCOMBING</b> cushion
--------------------------------------	------------------------------	-------------------------------	------------------------------	--------------------------------	-------------------------------

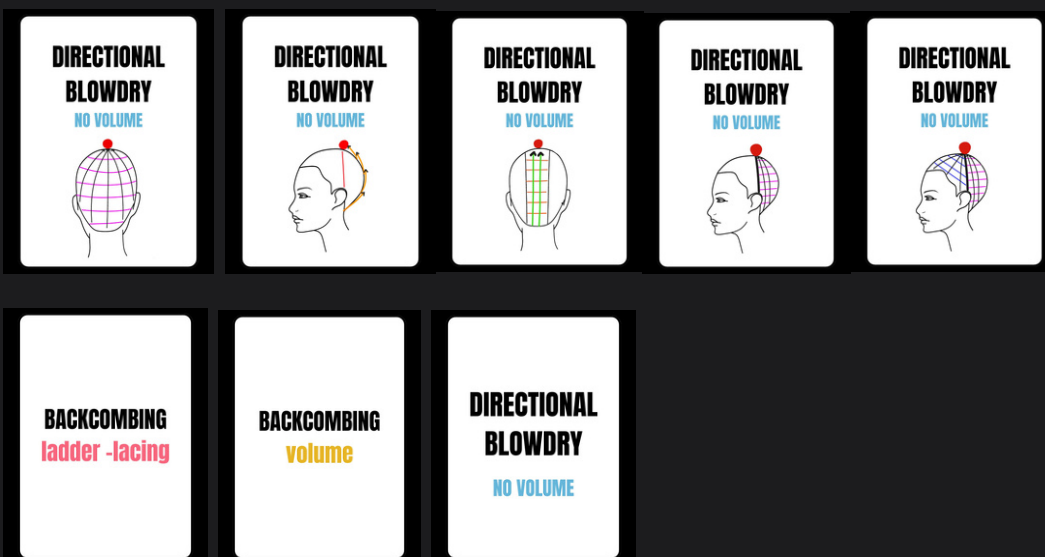
# MODULE 2 - High Pony

---

## Tools



## Skills



# MODULE 3 - Classic Chignon

---

## Tools

<b>TOOLS</b> STYLING COMB	<b>TOOLS</b> TAIL COMB	<b>TOOLS</b> SECTIONING STICK	<b>TOOLS</b> SMALL BUNGEE	<b>TOOLS</b> HAIR PINS U-SHAPE	<b>TOOLS</b> LARGE BUNGEE	<b>TOOLS</b> Mason Pearson Smoothing Brush
<b>TOOLS</b> BOBBY PINS GRIPS	<b>TOOLS</b> ROUND BRUSH Boar/Nylon Bristle					



---

## Products

<b>PRODUCTS</b> Detangler/Leave In	<b>PRODUCTS</b> Light Hold Mousse	<b>PRODUCTS</b> WORKING HAIRSPRAY
---------------------------------------	---	---

---

## Skills

<b>SECTIONING</b> CRISS CROSS 	<b>SECTIONING</b> DOUBLE PONY 	<b>TECHNIQUE</b> ROUND BRUSH THUMB LATCH
---	---	--

# MODULE 4 - Smooth Blowdrying

---


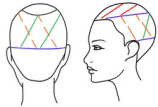
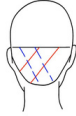

## Tools

<b>TOOLS</b> DENMAN BRUSH	<b>TOOLS</b> ROOT CONFUSION	<b>TOOLS</b> ROUND BRUSH Boar/Nylon Bristle	<b>TOOLS</b> ROUND BRUSH BOAR BRISTLE	<b>TOOLS</b> Mason Pearson Smoothing Brush	<b>TOOLS</b> DETANGLING BRUSH
------------------------------	--------------------------------	---	---	--	----------------------------------

## Products

<b>PRODUCTS</b> Light Oil
------------------------------

## Skills

<b>SECTIONING</b> CRISS CROSS 	<b>SECTIONING</b> EXTERIOR 	<b>SECTIONING</b> Smooth Nape 	<b>TECHNIQUE</b> WRAP DRY Neutral Roots	<b>TECHNIQUE</b> ROUND BRUSH THUMB LATCH	<b>TECHNIQUE</b> AIR BRUSHING Neutral Roots 
---	--	---	---	--	--

# MODULE 5 - CORN ROWS

---

## Tools

### TOOLS

SANEX  
Mega Wrap  
Strips

### TOOLS

HAIR PINS  
U-SHAPE

### TOOLS

DETANGLING BRUSH

### TOOLS

DETAILING BRUSH

---

## Products

### PRODUCTS

CREAM

### PRODUCTS

Detangler/Leave In

### PRODUCTS

Braiding Gel

### PRODUCTS

Foam/Mousse

---

## Skills

### TECHNIQUE

CRISS-CROSS  
FINGERS

### TECHNIQUE

STRETCHING  
Pick

### TECHNIQUE

STRETCHING  
Comb

### TECHNIQUE

STRETCHING  
Brush + Nozzle

### SECTIONING

CORN ROWS TOP



### SECTIONING

CORN ROWS R SIDE



### SECTIONING

CORN ROWS FRONT



### SECTIONING

CORN ROWS L SIDE



### SECTIONING

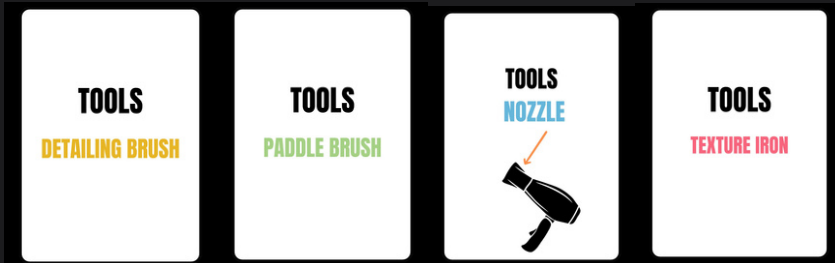
CORN ROWS BACK



# MODULE 6 - BOX & FRENCH BRAID

---

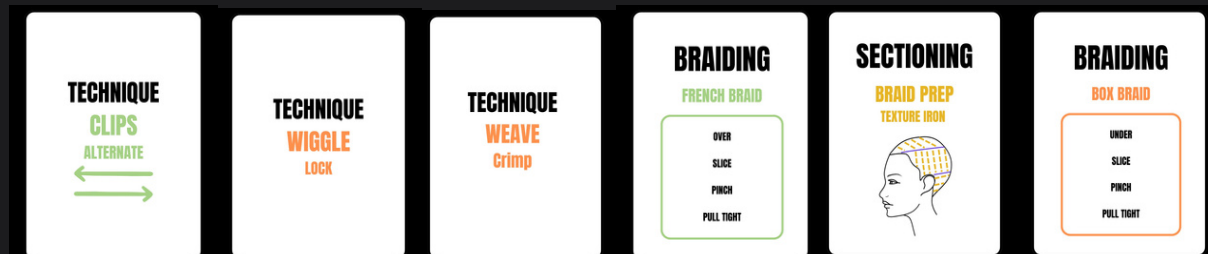
## Tools



## Products



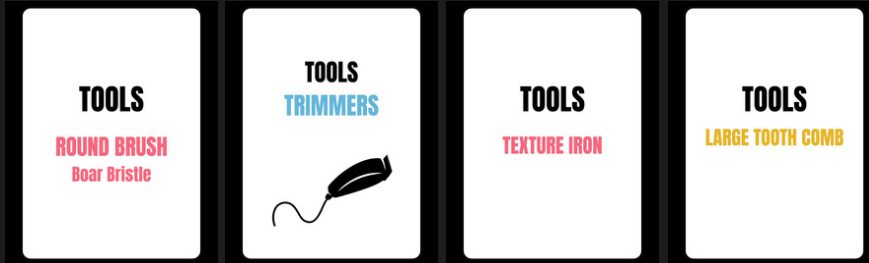
## Skills



# CLASS #2 - BUBBLE - Jill

---

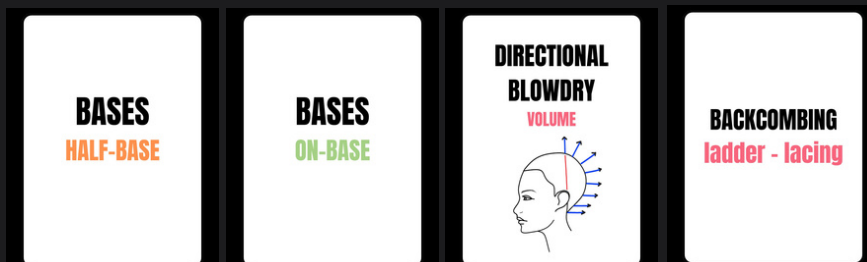
## Tools



## Products



## Skills



# CLASS #2 - BOUFFANT - Jill

---

## Tools



## Products



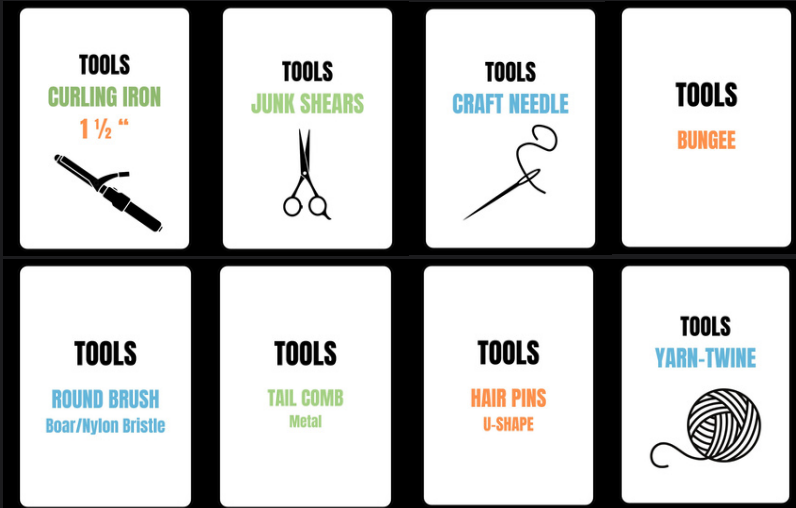
## Skills



# CLASS #2 - STALK - RUTH

---

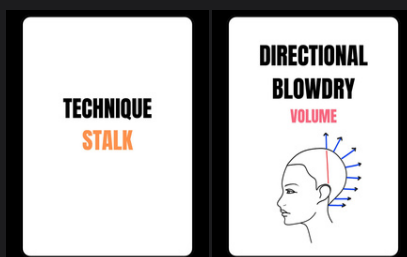
## Tools



## Products



## Skills



# CLASS #2 - VINES - RUTH

---

## Tools

### TOOLS

**ROUND BRUSH**  
Boar/Nylon Bristle

### TOOLS

**HAIR PINS**  
U-SHAPE

### TOOLS

**TAIL COMB**  
Metal

### TOOLS

**WEFT**

### TOOLS

**Mason Pearson**  
Smoothing Brush

### TOOLS

**BUNGEE**

## Products

### PRODUCTS

**WORKING**  
HAIRSPRAY

### PRODUCTS

**STRONG HOLD**  
GEL

## Skills

### DIRECTIONAL BLOWDRY

**NO-VOLUME**

### TECHNIQUE

**SURFACE SMOOTHING**  
Side of Mason Pearson

# MODULE 7 - WET STYLING 1

---

## Tools



## Products



## Skills



# MODULE 8 - WET STYLING 2

---

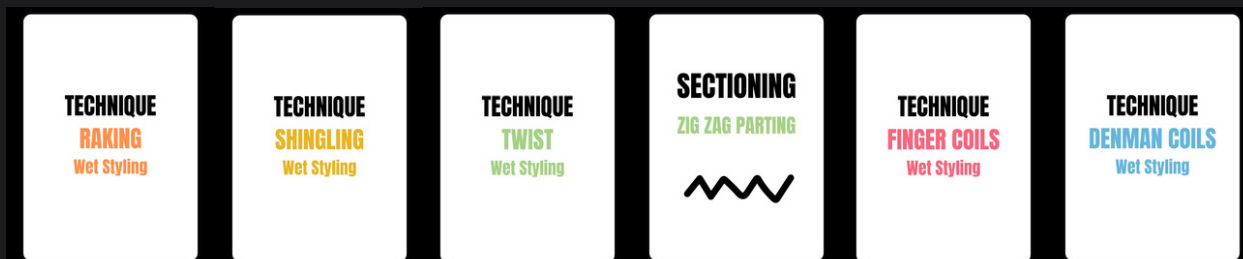
## Tools



## Products



## Skills



# MODULE 9 - PREP CANVAS

---

## Tools

### TOOLS

DENMAN BRUSH

### TOOLS

ROUND BRUSH  
Boar/Nylon Bristle

### TOOLS

SECTIONING  
STICK

### TOOLS

NO-MARK  
CLIPS

### TOOLS NOZZLE



---

## Products

### PRODUCTS

Detangler/Leave In

### PRODUCTS

Light Oil

---

## Skills

# MODULE 9 - BASES

---

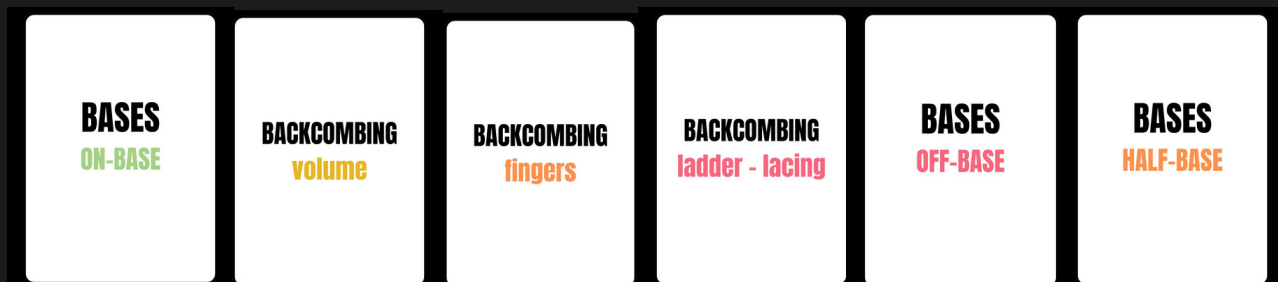
## Tools



## Products

---


## Skills



# MODULE 10 - Classic Waves

---


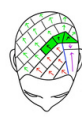

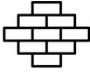


## Tools

<b>TOOLS</b> DETAILING BRUSH	<b>TOOLS</b> SINGLE PRONG CLIPS	<b>TOOLS</b> ROUND BRUSH Boar/Nylon Bristle	<b>TOOLS</b> Mason Pearson Smoothing Brush	<b>TOOLS</b> CURLING IRON 1" 	<b>TOOLS</b> DETANGLING BRUSH
<b>TOOLS</b> STYLING COMB	<b>TOOLS</b> DENMAN BRUSH	<b>TOOLS</b> TAIL COMB			

## Products

<b>PRODUCTS</b> WORKING HAIRSPRAY	<b>PRODUCTS</b> Thickening Spray	<b>PRODUCTS</b> High Hold Mousse
---	-------------------------------------	--

## Skills

<b>SECTIONING</b> CLASSIC WAVE FRONT 	<b>BASES</b> OVERDIRECTED BASE	<b>SECTIONING</b> CLASSIC WAVE TOP 	<b>SECTIONING</b> CLASSIC WAVE BACK 	<b>SECTIONING</b> BRICK LAY 	<b>BASES</b> HALF-BASE
<b>SECTIONING</b> CLASSIC WAVE RIGHT SIDE 	<b>BASES</b> OFF-BASE	<b>SECTIONING</b> CLASSIC WAVE LEFT SIDE 	<b>BASES</b> ON-BASE	<b>TECHNIQUE</b> WET ROOTS Dry Set	

# MODULE 11 - Spiral Tong

---

## Tools

<b>TOOLS</b> Mason Pearson Smoothing Brush	<b>TOOLS</b> CURLING IRON 1 1/4"	<b>TOOLS</b> DETANGLING BRUSH	<b>TOOLS</b> CURLING IRON 1/2"	<b>TOOLS</b> CURLING IRON 1/4"
<b>TOOLS</b> STYLING COMB	<b>TOOLS</b> CURLING IRON 3/4"	<b>TOOLS</b> TAIL COMB	<b>TOOLS</b> CURLING IRON 1 1/2"	<b>TOOLS</b> CURLING IRON 1"

## Products

<b>PRODUCTS</b> Detangler/Leave In	<b>PRODUCTS</b> WORKING HAIRSPRAY
---------------------------------------	---

## Skills

<b>SECTIONING</b> CLASSIC WAVE BACK	<b>SECTIONING</b> CLASSIC WAVE RIGHT SIDE	<b>SECTIONING</b> CLASSIC WAVE LEFT SIDE	<b>TECHNIQUE</b> SPIRAL TONG	<b>SECTIONING</b> OVER-SIZED SECTION	<b>SECTIONING</b> IRON-SIZED SECTION	<b>SECTIONING</b> CLASSIC WAVE TOP
--	--	---	---------------------------------	--	--	---------------------------------------