

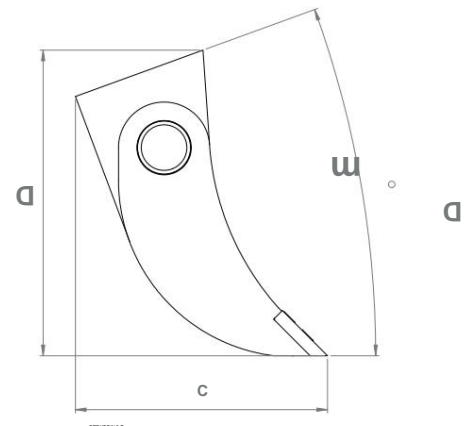
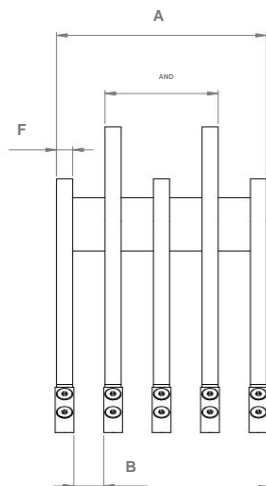
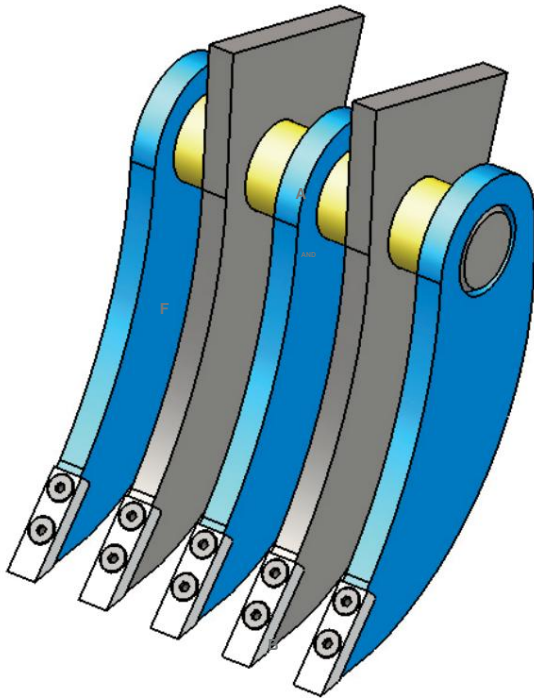
RIPPER FOR 2 - 10 T EXCAVATORS

RIPPER FOR EXCAVATORS 2 - 10 T • RIPPER FOR EXCAVATORS 2 - 10 T
RIPPER FOR EXCAVATORS 2 - 10 T



BE Series • BE Series • BE Series • Series BE

RIPPER • RIPPER • RIPPER • RIPPER



	A (mm)	B (mm)	C (mm)	D (mm)	E (mm)	F (mm)	P (Kg)
BE 02	175	46	390	473	175	25	25
BE 05	325	46	390	473	175	60	60

	A (mm)	B (mm)	C (mm)	D (mm)	E (mm)	F (mm)	P (Kg)
BE 02	20	46	390	473	175	25	25
BE 05	46	390	175	25	60	20	20

Info for catalogue



Rippers with interchangeable hardened steel anti-wear teeth, for work below the ground surface, such as grubbing and collecting stumps, clearing land and extracting stones.



Ripper with interchangeable teeth made of hardened wear-resistant steel. Suitable for works under the ground surface, such as logs eradication and collection, soil tillage, and stones extraction.



Ripper with interchangeable teeth in wear-resistant hardened steel. Suitable for all work below the surface of the ground, such as digging and collecting stumps, clearing land and extracting stones.



Ripper with replaceable teeth made of hardened and wear-resistant steel. Suitable for surface work such as log clearing and collection, tillage and stone extraction.

DIMENSIONS IN MILLIMETERS
SURFACE FINISH:
TOLERANCES:
LINEAR:
ANGULAR:

NAME BUSINESS DATA

TITLE:

DRAWN DOWN
VERIFIED
APPROVED
DONE
QUALITY

MATERIAL:

NO DRAWING

Info for catalogue

(mm) F (mm) P (Kg) 175 25 175
25

	25 A	20 B 20	C	D	E	F	P	μ°	Number of teeth - Teeth quantity Quantité dents - amount of teeth
BE 01	60 /	/	390 mm	473 mm	175 mm	25 mm	20 Kg	20	1
BE 02	175 mm	46 mm	390 mm	473 mm	175 mm	25 mm	25 Kg	20	2
BE 05	325 mm	46 mm	390 mm	473 mm	175 mm	25 mm	60 Kg	20	5