

MOWING BUCKETS

WEED CUTTING BUCKETS
MOWING BUCKETS
DIAPER BASKET



Series BF • BF Series • BF Series • Series BF

FOR EXCAVATORS WITH A MAXIMUM WEIGHT OF 25 T • FOR EXCAVATORS WITH A MAX WEIGHT OF 25 T
FOR EXCAVATORS WITH A MAXIMUM WEIGHT OF 25 T • FOR BAGGER WITH ONE WEIGHT UNTIL MAX 25 T



Our **mowing buckets** have been designed for cleaning and reclamation work on banks and canals. They can work immersed in water, without causing problems to the mechanical movement and cutting system. All the elements that make up the cutting system are completely screwed.



Our **weed cutting buckets** are perfect for cleaning-up and the reclamation of banks and canals. They can easily work under water, without any problem to the mechanical drive and cutting system. All the parts of the cutting system are completely screwed up.



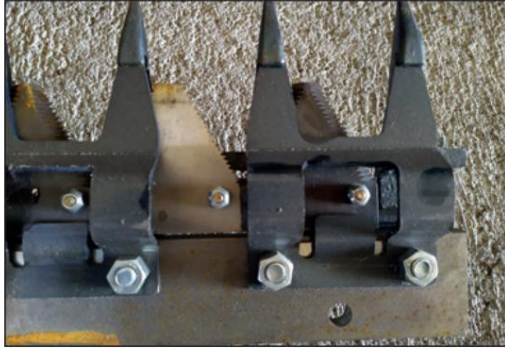
Our **mower buckets** have been designed for all cleaning and sanitation work on banks and canals. They can work in water, without causing any problem to the mechanical movement and cutting system. Any part of the cutting system is completely screwed.



Ours are **Diaper basket** are suitable for cleaning and sanitizing dams and canals. You can easily work underwater without creating problems with the mechanical movement and editing system. All components of the editing system are fully bolted.



DETAILS • FEATURES STD • CHARACTERISTICS • PROPERTIES DEFAULT



Original Hesston teeth with grooved section. Max cutting diameter 5/6 cm.
 Original Hesston teeth with serrated sections. Max cutting diameter 5/6 cm.
 Original Hesston teeth with toothed section. Maximum cutting diameter 5/6 cm.
 Original Hesston teeth with serrated blades. Max cutting diameter 5/6 cm..



Movement mechanism with sealed bearing support, SKF bearings and anti-shock valve.

Drive system with sealed for life bearing seat, SKF bearings and anti-shock valves.
 Mechanical movement system with sealed bearing seat, SKF bearings and anti-shock valves.

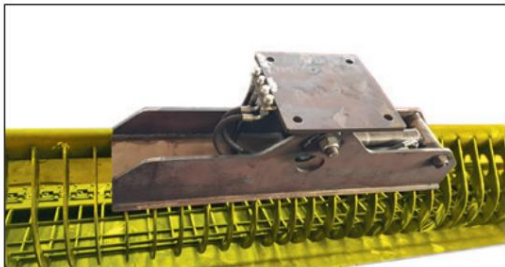
Movement system with watertight bearing seat, SKF bearings and anti-shock valves.



Profile designed for the passage and protection of hydraulic pipes.
 Profile planned for the passage and the protection of the hydraulic hoses.
 Profile designed for the passage and protection of hydraulic hoses.
 Profile for passage and protection of hydraulic hoses.



Blade holder bar (for versions C and D).
 Rod for spare blade (only for C and D versions).
 Spare blade bar (for versions C and D).
 Replacement blade rod (only for versions C and D).

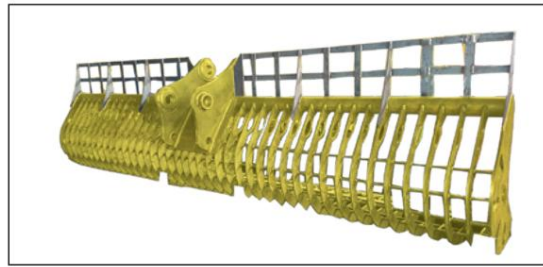


Possibility of tilting attachment with hydraulic cylinder or customizable (for version C and D).

Possibility of tilting coupling with an hydraulic or customizable cylinder (only for C and D versions).

Possibility of an inclined hitch with hydraulic or customized cylinder (for versions C and D).

Possibility of adjustable pick-up with a hydraulic or customized cylinder (only for versions C and D).



Optional protective net.

Optional protection grid.

Optional protection grid.

Protective grille optional.

TECHNICAL CHARACTERISTICS • TECHNICAL DETAILS • TECHNICAL DATA • TECHNICAL CHARACTERISTICS

Model - Model	Model Model	BF10A	BF15A	BF20A	BF10B	BF15B	BF20B	BF25B	BF30B	BF20C	BF25C	BF30C	BF35C	BF40C	BF25D	BF30D	BF40D	BF60D
Working width Working width working width cutting width	mm	1000	1500	2000	1000	1500	2000	2500	3000	2000	2500	3000	3500	4000	2500	3000	4000	6000
Scope Oil flow Debit oil flow	max l/min	40				40				40				40				
Work pressure Working pressure working pressure work pressure	Bar	140				140				140				140				
Excavator weight Excavator weight Excavator weight Dredging weight	Ton	1,0-2,9				3,0-7,9				8,0-14,9				15,0-25,0				