

LOG PLIERS

LOG GRABS
WOOD GRAPPLE
LOG GRIPPER



Serie KA • THE Series • KA series • Series THE

FOR MINI - MIDI EXCAVATORS UP TO 15 TON • FOR MINI AND MIDI EXCAVATOR UP TO 15 T • FOR MINI AND MIDI BAGGER UNTIL 15 T • FOR MINI AND MIDI EXCAVATORS UP TO 15 T



Log grapples ideal for handling, loading and unloading tree trunks cleared of branches and ready for transport: they can be fitted to forestry cranes of all ranges and sizes. It is built in domex 710 steel and equipped with a block valve.

They are used in the forestry and industrial fields, for excavators up to 15 tons.



Log grabs suitable for the handling, the loading and the unloading of the logs ready to be transported. They can be mounted on excavators or forestry cranes.

They are built of steel Domex 710 and equipped with blocking valves.



Log grapples ideal for moving, loading and unloading tree trunks, cleaned and ready for transport. They can be mounted on excavators or forestry cranes. Manufactured in Domex 710 steel and equipped with shut-off valves

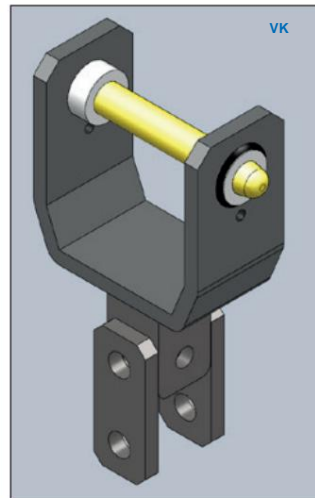


Log grab suitable for holding, loading and unloading logs. They can be mounted on excavators and forest cranes.

They are constructed of Domex 710 steel and fitted with block valves.



PARTICULAR CLAMPS FOR STANDARD LOGS • FEATURES STANDARD LOG GRABS
 CHARACTERISTICS WOOD GRAPPLE • FEATURES STANDARD LOG GRIPPER



Possibility of double pin attachment or quick coupling

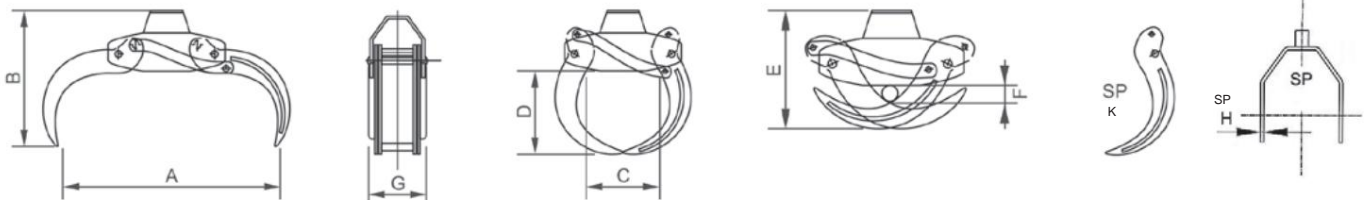
Possibility coupling double pin for or quick hitch.
 Possibility to attach two axes or for quick attach
 Possibility of recording two bolt or for SWE

UNLIMITED 360° HYDRAULIC ROTATOR
 HYDRAULIC ROTATOR 360°
 UNLIMITED 360° HYDRAULIC ROTATOR
 360° HYDRAULIC SWIVEL

1 PIN ARM ATTACHMENT SADDLE • BRACKET 1 PIN
 ATTACHMENT TO ARM 1 AXIS • RECORDING 1 BOLT

Model	Max static range	Weight
Model	Max static load	Weight
Model	Max static load	Weight
Model	Max. static charge	Weight
ON 12 P	1,2 ton	10 kg
ON 35 P	3,5 ton	17 kg
ON 50 P	5,0 ton	25 kg
ON 70 P	7,0 ton	36 kg
ON 120 P	12 ton	48 kg
AR 125 F	12 ton	56 kg
AR 175 F	17 ton	70 kg

Model	Excavator weight
Model	Excavator weight
Model	Excavator weight
Model	weight of Baggers
VK 01	1-2 ton.
VK 02	2-4 ton.
VK 03	4-7 ton.
VK 04	7-15 ton.



For pressure higher than 250 BAR, a MAXIMUM valve will be mounted KX05 (upon request)
 Pour pressures supérieures à 250 bar, il sera monté une soupape MAXI KX05 (on request) • For pressures over 250 bar, a MAXIMUM valve is fitted KX05 (on request)

TECHNICAL CHARACTERISTICS • **TECHNICAL DETAILS** • **TECHNICAL DATA** • **TECHNICAL CHARACTERISTICS**

Model	Weight	Max bar	Capacity lift	A	B	C	D	...	F	G	SP H	SP K	Area mq	Excavator weight	Rotator advised
Model	Weight	Max bar	Lifting capacity	mm	mm	mm	mm	mm	mm	mm	mm	mm	m2 area	Excavator weight	Rotator recommended
Model	Weight	Max bar	Ability lifting										m2 Surface	Excavator weight	Rotator advised
Model	Weight	Max bar	hubcraft										m2 Surface	weight of Baggers	Advised pivot
IN 08	60 kg	210	1000	1000	730	405	450	460	65	310	8	ø	0,146	0,8 / 1,8 ton	ON 12 P
IN 10	89 kg	250	1400	1000	730	405	450	460	65	310	20	10	0,146	1,9 / 3,0 ton	ON 35 P
WITH 12	110 kg	250	1700	1200	770	450	480	510	80	355	20	10	0,201	3,0 / 5,0 ton	ON 50 P
AT 13	155 kg	250	2100	1350	880	500	540	550	90	370	20	12	0,255	4,0 / 7,0 ton	ON 70 P
IN 15	240 kg	250	2700	1550	960	620	630	600	100	430	20	12	0,336	7,0 / 10,0 ton	ON 120 P
IN 15 H	314 kg	350	2900	1550	960	620	630	600	100	430	20	15	0,336	10,0 / 15,0 ton	AR 125 F
AT 17 H	400 kg	350	3400	1750	1100	680	710	670	150	490	20	20	0,428	13,0 / 15,0 ton	AR 175 F