

# LOG PLIERS

LOG GRABS  
WOOD GRAPPLE  
LOG GRIPPER



## Series KL • at Series • KL series • Seriesat

FOR MINI - MIDI EXCAVATORS UP TO 15 TON • FOR MINI AND MIDI EXCAVATOR UP TO 15 T • FOR MINI AND MIDI BAGGER UNTIL 15 T



With this log grapple it is possible to perform 3 functions:

1. use only of the grapple without teeth and bucket for loading logs;
2. use with spreader teeth (in the photo) to take twigs or loose goods;
3. use of two buckets for loading wood chips, sand, earth and all those loose goods.

All this by simply mounting 4 pins in less than 2 minutes.



Log grab suitable for 3 functions:

1. use of the grab without teeth and bucket, for the log loading;
2. use of the grab with widening teeth (see picture) for the loading of branches or melted goods;
3. use of two buckets to load wood chips, sand, earth and all melted goods.

All simply assembling 4 pins in less than 2 minutes.



Log grapple with 3 functions:

1. use of grapple without teeth and bucket to load the trunks;
2. Use with expander tines (pictured) to load branches or loose material;
3. Use of two buckets to load sand, earth, chips or loose materials.

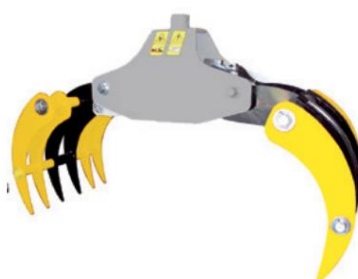
You just have to mount 4 axes in less than 2 minutes.



With this gripper you can:

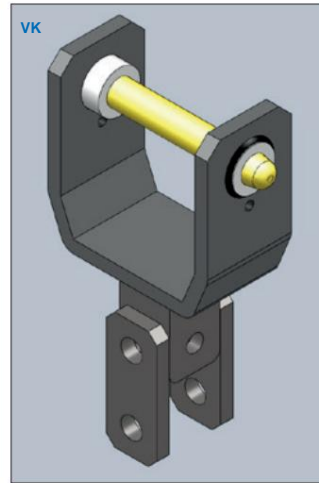
1. only use the grapple without teeth and shovel for loading logs;
2. use the grab with expanding teeth (picture) for loading sticks and bulk materials;
3. Use two buckets for loading chips, sand, soil crust and bulk materials.

You only have to assemble 4 bolts in less than 2 minutes.



**PARTICULAR CLAMPS FOR STANDARD LOGS** • FEATURES STANDARD LOG GRABS  
 CHARACTERISTICS WOOD GRAPPLE • FEATURES STANDARD LOG GRIPPER

**ACCESSORY KM**  
 DEVICE KM • ACCESSORY KM  
 ACCESORIES KM

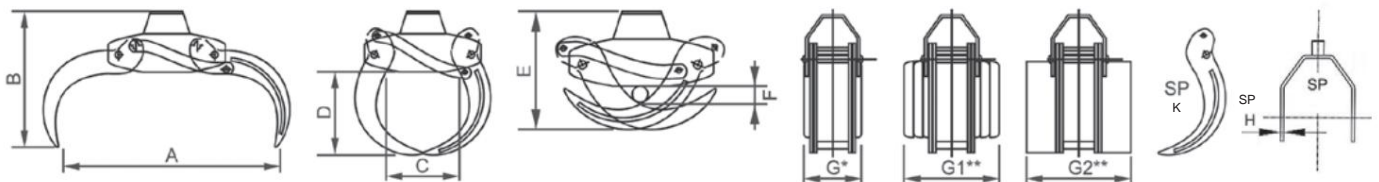


**UNLIMITED 360° HYDRAULIC ROTATOR**  
 HYDRAULIC ROTATOR 360°  
 UNLIMITED 360° HYDRAULIC ROTATOR  
 360° HYDRAULIC SWIVEL

**1 PIN ARM ATTACHMENT SADDLE** • BRACKET 1 PIN  
 ATTACHMENT TO ARM 1 AXIS • RECORDING 1 BOLT  
 Possibility of double pin attachment or quick coupling  
 Possibility coupling double pin or for quick hitch.  
 Possibility to attach two axes or for quick attach  
 Possibility of recording two bolt or for SWE

Model	Max static range	Weight
Model	Max static load	Weight
Model	Max static load	Weight
Model	Max. static charge	Weight
ON 12 P	1,2 ton.	10 kg
ON 35 P	3,5 ton.	17 kg
ON 50 P	5,0 ton.	25 kg
ON 70 P	7,5 ton.	36 kg
ON 120 P	12,0 ton.	120 kg

Model	Excavator weight
Model	Excavator weight
Model	Excavator weight
Model	weight of Baggers
VK 01	1 - 2 ton
VK 02	2 - 4 ton
VK 03	4 - 7 ton
VK 04	7 - 15 ton



For pressure higher than 250 BAR, a MAXIMUM valve will be mounted KX05 ( upon request )  
 Pour pressurses supérieures à 250 bar, il sera monté une soupape MAXI KX05 (on request) • For pressures over 250 bar, a MAXIMUM valve is fitted KX05 (on request)

**TECHNICAL CHARACTERISTICS** • **TECHNICAL DETAILS** • **TECHNICAL DATA** • **TECHNICAL CHARACTERISTICS**

Model	Weight	Max bar	Lifting capacity	A	B	C	D	...	F	G	G1/G2	SP H	SP K	Area m <sup>2</sup>	Excavator weight	Rotator advised
Model	Weight	Max bar	Lifting capacity	mm	mm	mm	mm	mm	mm	mm	mm	mm	mm	m <sup>2</sup> area	Excavator weight	Rotator advised
Model	Weight	Max bar	lifting capacity											Surface m <sup>2</sup>	Excavator weight	Rotator advised
Model	Weight	Max bar	hubcraft											m <sup>2</sup> surface	weight of Baggers	adviser Drehgelenk
KL 08 105	kg 210		1.200 kg	1000	730	405	450	460	65	310	650	10	10	0,146	1,6 / 1,8 ton.	AR12P
KL 10 122	kg 250		1.400 kg	1000	730	405	450	460	65	310	650	20	10	0,146	1,9 / 4,0 ton.	AR35P
KL 12 205	kg 250		1.700 kg	1200	770	450	480	510	80	355	680	20	10	0,201	3,5 / 5,0 ton.	AR50P
KL 13 250	kg 250		2.100 kg	1350	880	500	540	550	90	370	750	20	12	0,255	4,5 / 8,0 ton.	AR70P
KL 15 320	kg 250		2.700 kg	1550	960	620	630	600	100	430	850	20	12	0,336	8,0 / 10,0 ton.	AR120P