

HYDRAULIC DRILL

HYDRAULIC AUGER DRIVE UNIT • HYDRAULIC AUGER
OIL-DYNAMIC EARTH DRILL



Series TA - TB

TA-TB Series • TA-TB Series • Series TA-TB

FOR MINI - MIDI EXCAVATORS FROM 1 TO 6 TON • FOR MINI AND MIDI EXCAVATORS FROM 1 TO 6 TONS • FOR MINI AND MIDI EXCAVATORS FROM 1 TO 6 TONS • FOR MINI AND MIDIBAGGER FROM UNTIL METRIC TONS



Our **TA** and **TB** series headers have been designed to get the best result from mini excavators between 1 ton and 6 ton. The new generation reducer we produce guarantees superior sturdiness and reliability thanks to the **body made entirely of steel.**



Our auger drive units have been planned to best suit mini excavators with a weight ranging from 1 to 6 tons. The new-generation gear unit, built by our team, assures a better ruggedness and reliability as it is

entirely built of steel.



Our **TA and TB series** augers have been designed to work on mini excavators weighing between 1 and 6 tons.

The new generation reducer, produced by our team, ensures better solidity and reliability thanks to its **all-steel structure.**



Our augers **Series TA and TB** are suitable for use on mini excavators with a weight of 1 to 6 tons. The next generation gearboxes produced by our company guarantee better strength and reliability because they

full off steel is.

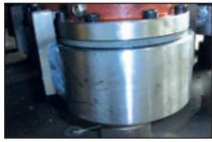


PARTICULARS SERIES DRILLS

FEATURES STD AUGER

DRIVE UNITS • CARACTERISTIQUES TARIERES STANDARD •

FEATURES STANDARD EARTH BIT



STEEL REDUCER BODY

The reducer body is completely in steel, both internally and externally in order to provide greater resistance to possible external impacts.

STEEL GEAR UNIT

The gear unit is completely built of steel, both internally and externally, for a better resistance to possible accidental hits.

STEEL REDUCER

The reducer is entirely made of steel, either inside or outside, for better resistance during accidental collisions.

TRANSMISSION OUT OF STAHL

The gear is full steel, inside and out, for better resistance to accidental impacts.



WITHOUT EXTERNAL DRAINAGE

The engine runs on the oil inlet and outlet pipes only. There is therefore no need to modify the hydraulic system of the excavator.

WITHOUT DRAIN

The motor works only with the in and out oil pipes. There is no need to modify the excavator PTO.

WITHOUT DRAINAGE

The motor works only with the oil inlet and oil outlet hose.

The excavator's auxiliary circuit must not be modified.

WITHOUT DRAINAGE

The engine works through only the inlet and outlet pipes. Modifying the hydraulics is not necessary.



DOUBLE EFFECT

The tip rotates both clockwise and counterclockwise.

DOUBLE EFFECT

The auger bit turns both clockwise and counter clockwise.

DOUBLE ACTING

The auger rotates shows and in reverse.

DOUBLE ACTING

The auger rotates clockwise and counterclockwise.



DOUBLE JOINT

Possibility of forward - backward and right - left oscillation.

DUAL ARTICULATION

Possibility to swing back and front, left and right.

DOUBLE ARTICULATION

Possibility of oscillating recto back and left-right.

DOUBLE JOINT

Possibility to dangle front or back and left and right.



CONICAL SCREW / CRUSHER LOGS

Tools used to split and chop logs.

WOOD SPLITTER / STUMP GRINDER

Used to split and mince wood logs.

CORNER SPLITTER / STUMP TRIMMER

Used to cut and chop wood stumps.

KEILHOLZ- AND KEGELSPALTER

To break and shred the logs.



ARM ATTACHMENT

Possibility of both direct coupling (pins and bushings) and VT56 / VT61 quick coupling.

ARM CONNECTION

Possibility both of a direct connection (with pins) and a quick hitch VT56 / VT61.

ARM ATTACHMENT

Possibility either of a direct coupler (with the pins) or of a quick coupler VT56 / VT 61.

RECORDING AN BAGGERARM

Possibility of direct pick-up (with bolts) and quick coupler VT56 / VT61.



PENGO SD/SE TIP

Bit for mixed terrains, of any type of length and diameter. Possibility of extendable tip.

AUGER BIT WITH THE GAP

Auger bit for mixed soils, of different lengths and diameters. Possibility of extendable auger bit.

SPIN WITH PENGO

Auger for mixed terrain, in several diameters and lengths. Possibility of a spin which can be prolonged.

AUGER WITH THE GAP

Mixed soil auger, various diameters and lengths available.

Possibility of extendable auger.



POINT KNIVES SL

Drill bit for agricultural land of any type of length and diameter. Possibility of extendable tip.

AUGER BIT WITH KNIVES

Auger bit for soft soils, of different lengths and diameters. Possibility of extendable auger bit.

SPIN WITH KNIVES

Auger for agricultural land, in several diameters and lengths. Possibility of a spin which can be prolonged.

AUGER WITH KNIVES

Auger for arable soil, various diameters and lengths available.

Possibility of extendable auger.



DRILL WITH TIPS IN WIDIA SY/SW

Drill bit for rocky terrains/ road masons of any type of length and diameter. Possibility of extendable tip.

AUGER BIT WITH WIDIA TEETH

Auger for rocky soils, of different lengths and diameters. Possibility of extendable auger bit.

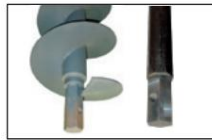
AUGER WITH WIDIA TEETH

Auger for stony ground, in several diameters and lengths. Possibility of a spin which can be prolonged.

AUGER WITH WIDIA TEETH

Auger for rocky soil, different diameters and lengths available.

Possibility of extendable auger.



POSSIBILITY OF EXTENSIONS WITH O WITHOUT PROPELLER

RE/RL

POSSIBILITY OF EXTENSIONS, WITH OR WITHOUT FLIGHT.

POSSIBILITY OF EXTENSIONS, WITH OR Sans Helix

POSSIBILITY FROM EXTENSIONS, WITH OR WITHOUT SNAIL.



OPTIONAL PLATE FOR PUTTING IN SAFETY

VT 57 - VT 62

OPTIONAL SAFETY DEVICE.

OPTIONAL SAFETY DEVICE.

OPTIONAL PROTECTIVE ACCESSORIES.



PLATE FOR THE USE OF DRILL UP ALSO SKID - SERIE UT

CONNECTION PLATE STANDARD BOBCAT FOR USES ON SKID LOADERS.

BOBCAT STANDARD PLATE FOR USE ON LOADERS.

RECORDING STANDARD BOBCAT FOR THE MISSION AN COMPACT CHARGER.

TECHNICAL CHARACTERISTICS •

TECHNICAL DETAILS • TECHNICAL DATA •

TECHNICAL CHARACTERISTICS

Model - Model - Model - Model	TA 18 TA 20	TA 26 TA 30	TB 20 TB 21				TB 26	TB 27
Portata d'olio max - Max oil flow - Debit maxi - Max Oldurchfluss l/min	35	40	50	60	100	90	100	90
Pressione massima - Max pressure - Pression maxi - Max pressure	bar	220	220	220	220	210	300	290
Delivered power (continuous kw) - Delivered power (continuous kw) Puissance de sortie (continu kw) - Output power (continuous kw)	10	12	11	20	20	24	18	24
Overall engine displacement - Displacement Cylinder - Class	l.	0,34	0,42	0,7	0,6	0,6	0,6	0,9
Cilindrata motore - Displacement - Cubic capacity - Klasse	cc	80	100	160	100	100	100	160
Motor - Motor - Motor - Motor	Orbitale - Orbital - Orbital - Orbital							
Riduttore - Gear unit - Reducer - Gear	Epicicloidale in acciaio - Planetary, steel - Epicycloidal, steel - Epizyklisch, aus Stahl							
Velocidad giro/liter - Speed rev/l - Vitesse tours/l - Velocidade u/l	2,9	2,1	1,3	1,6	1,6	1,6	0,9	0,9
Coppia max - Max torque - Couple maxi - Max Drehmoment	kNm 1,15	1,32	2	1,93	1,93	2,75	2,94	4,05
Graft - Output - Cle' - Schlusel	Hexagon - Hexagonal - Héxagonale - Sechseckig: 50 mm							
Reduction ratio - Gear ratio Reduction ratio - reduction ratio	4,26	4,26	4,26	5,77	5,77	5,77	5,77	5,77
Peso - Weight - Poids - Gewicht	kg	50	50	50	55	55	56	56
Indicative excavator weight - Excavator weight Excavator weight - Gewicht des Baggers	ton 0,8 - 1,3	1,3 - 2	2 - 2,5	2,5 - 3,5	3 - 4	3 - 4	4 - 6	4 - 6