

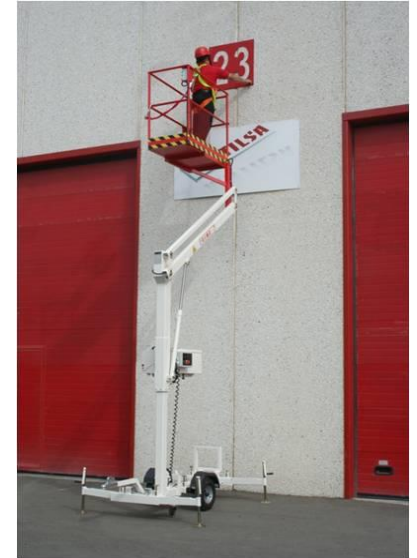


## AERIAL TRAILER MOUNTED PLATFORM ARTICULATED FOR WORKING HEIGHTS UP TO 7,5 METER (24,6 FEET)

**PARMA 7**

### STANDARD MODEL:

- \* 230 V main power
- \* Visual level for stabilisation
- \* Ball Coupling
- \* Steel basket (1,2 x 0,6)m
- \* Manual stabilizers with safety micro switches
- \* Controls in basket and chassis
- \* Electrohydraulic controls
- \* Emergency lowering from the ground
- \* Semi axle 0,75m wide

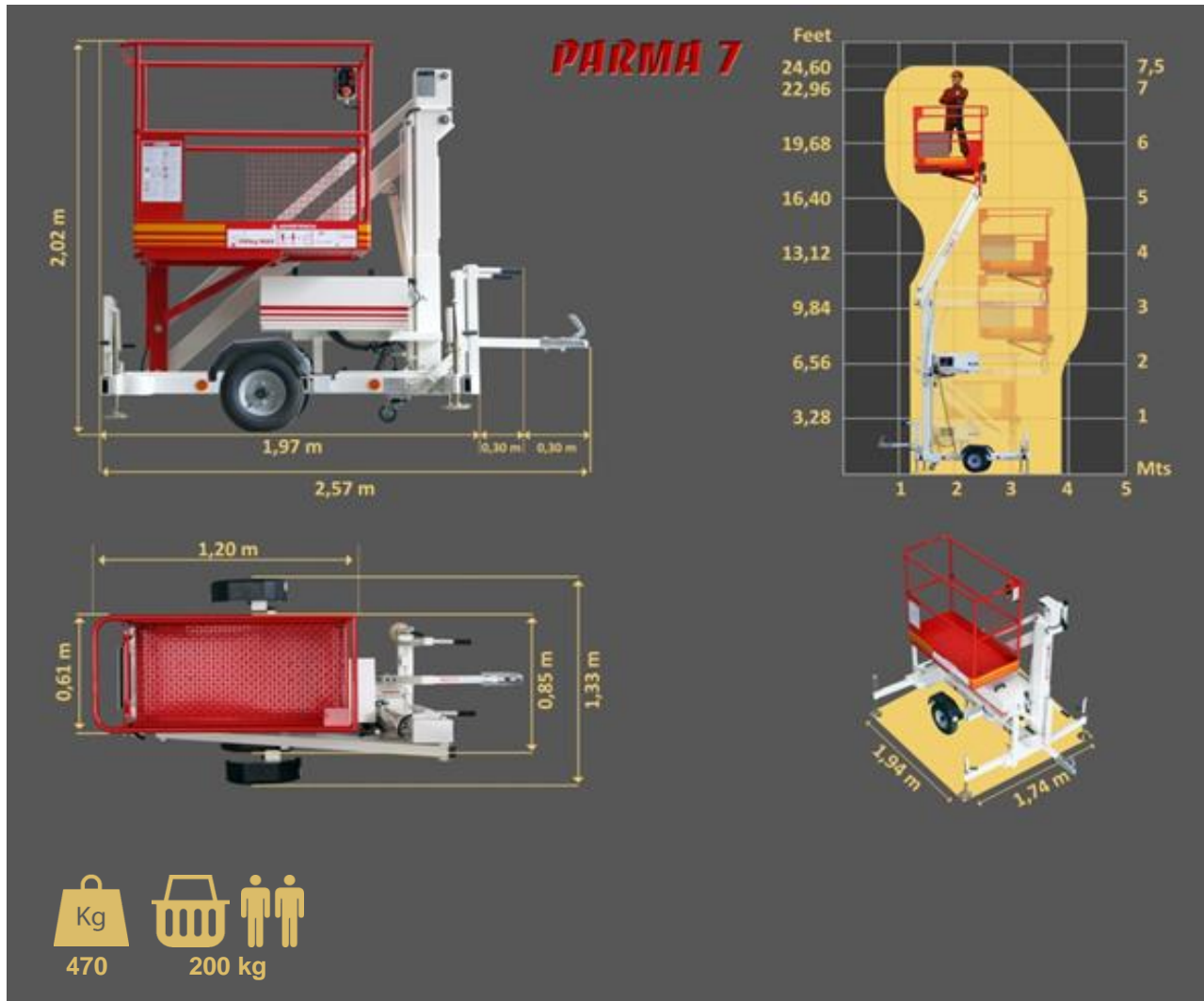


Management System  
ISO 9001:2008

www.tuv.com  
ID 9105060482



**PARMA 7**



### Optional accessories

- 1 Electric outlet in basket
- 2 Spare wheels
- 3 Lighting kit for roads
- 4 Rotating light
- 5 Batteries main power
- 6 Charge indicator for batteries
- 7 Ring coupling
- 8 Descent buzzer
- 9 Hour meter









**PARMA 9**

**AERIAL TRAILER MOUNTED PLATFORM ARTICULATED FOR WORKING HEIGHTS UP TO 9,5 METER (31,16 FEET)**

**STANDARD MODEL:**

- \* **230 V main power**
- \* **Visual level for stabilisation**
- \* **Ball Coupling**
- \* **Steel basket (0,8 x 0,6) m**
- \* **Manual stabilizers with safety micro switches**
- \* **Controls in basket and chassis**
- \* **Proportional hydraulic controls**
- \* **Emergency lowering from the ground**



Management System  
ISO 9001:2008  
www.tuv.com  
ID 9105960482

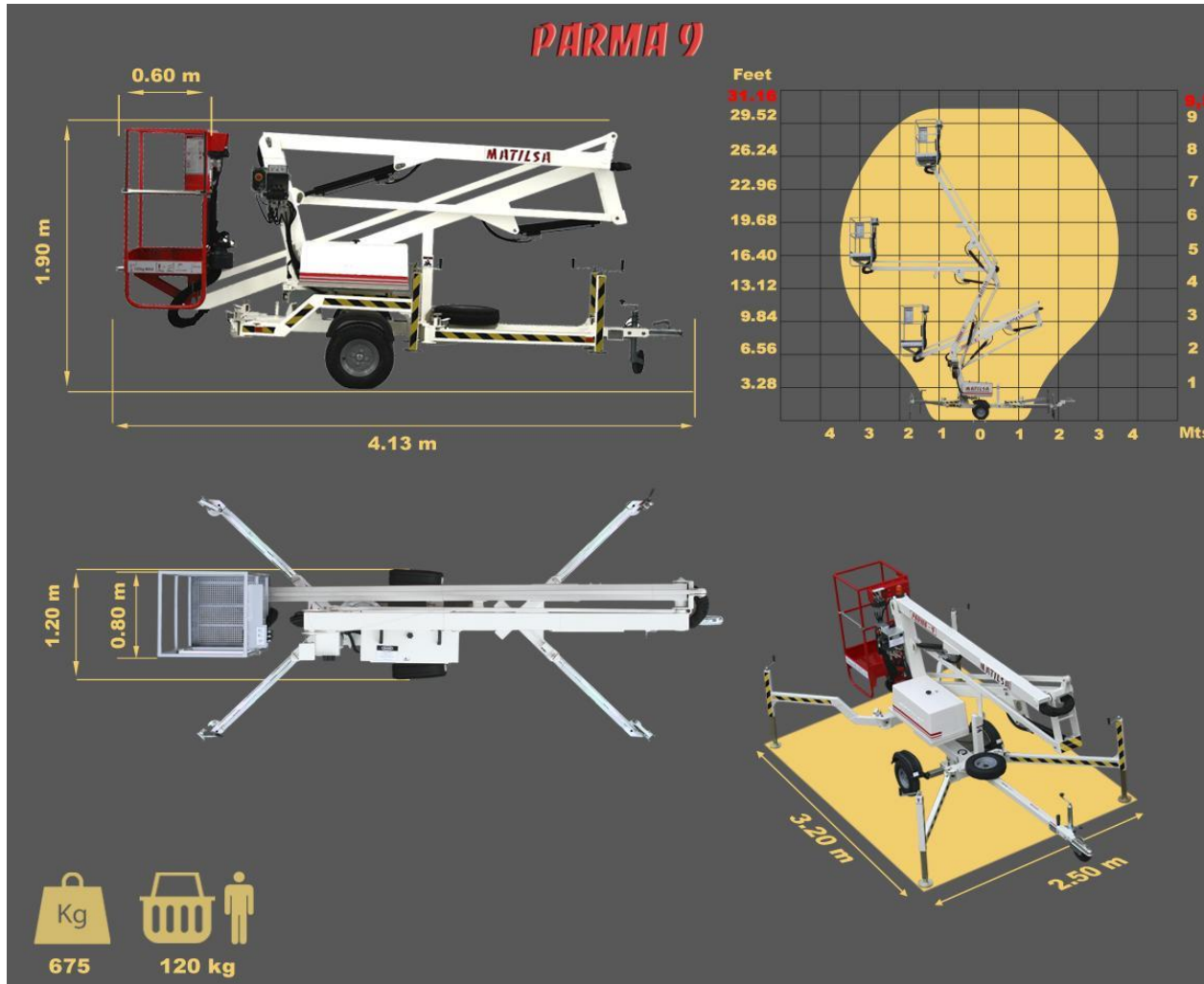


# PARMA 9

Axle on piece



Semi axle



## Optional accessories

- 1 Electric outlet in basket
- 2 Spare wheels
- 3 Lighting kit for roads
- 4 Rotating light
- 5 Batteries main power
- 6 Gasoline engine
- 7 Charge indicator for batteries
- 8 Inertia brake
- 9 Semi axle
- 10 Ring coupling
- 11 Emergency lowering from the basket
- 12 Descent buzzer
- 13 Hour meter





**PARMA 12**

**AERIAL TRAILER MOUNTED PLATFORM ARTICULATED FOR WORKING HEIGHTS UP TO 12  
METER (39,37 FEET)**

**STANDARD MODEL:**

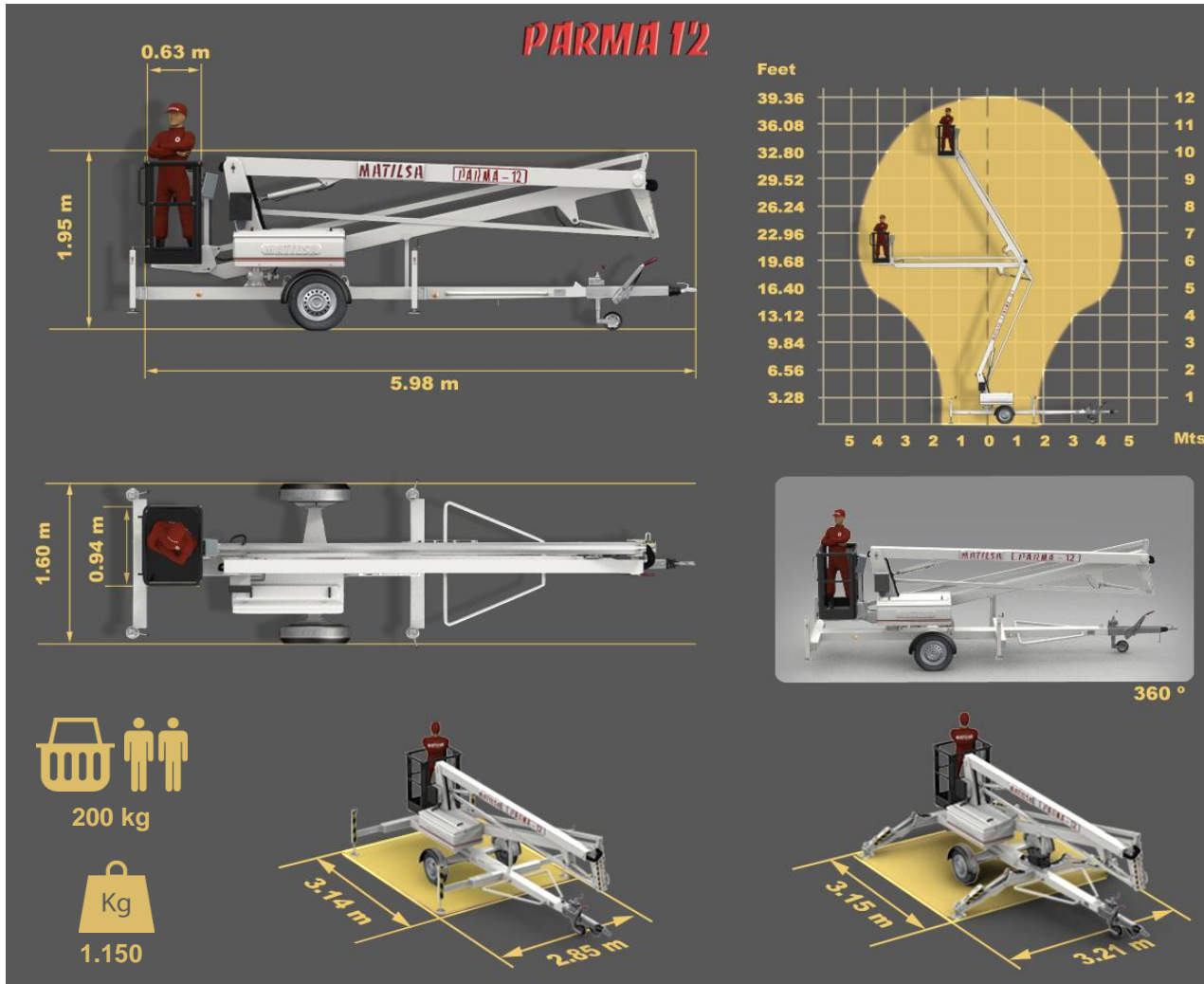
- \* 230V main power
- \* Visual level for stabilisation
- \* Ball Coupling with inertia brake
- \* Steel basket (0.9 x 0,6) m
- \* Manual stabilizers with safety micro switches
- \* Controls in basket and chassis
- \* Proportional hydraulic controls
- \* Emergency lowering from the ground



Management  
System  
ISO 9001:2008  
[www.tuv.com](http://www.tuv.com)  
ID 9105060482



# PARMA 12



## Optional accessories

- 1 Electric outlet in basket
- 2 Descent buzzer
- 3 Spare wheels
- 4 Lighting kit for roads
- 5 Hour meter
- 6 Rotating light
- 7 Bi energy: 230V + (Gasoline or Batteries)
- 8 Batteries main power
- 9 Charge indicator for batteries
- 10 Hydraulic stabilizers
- 11 Automatic self-leveling for stabilizers
- 12 Self driving system on wheels
- 13 Emergency lowering from the basket
- 14 Insulating basket
- 15 Iron basket (1,2 x 0,6) m
- 16 Control weight in the basket
- 17 Support pads (40 x 30) cm
- 18 Stabilizer for ball and ring coupling
- 19 Ring coupling







**PARMA 12T**

**AERIAL TRAILER MOUNTED PLATFORM ARTICULATED AND TELESCOPIC, FOR WORKING HEIGHTS UP TO 12 METER (39,37 FEET)**

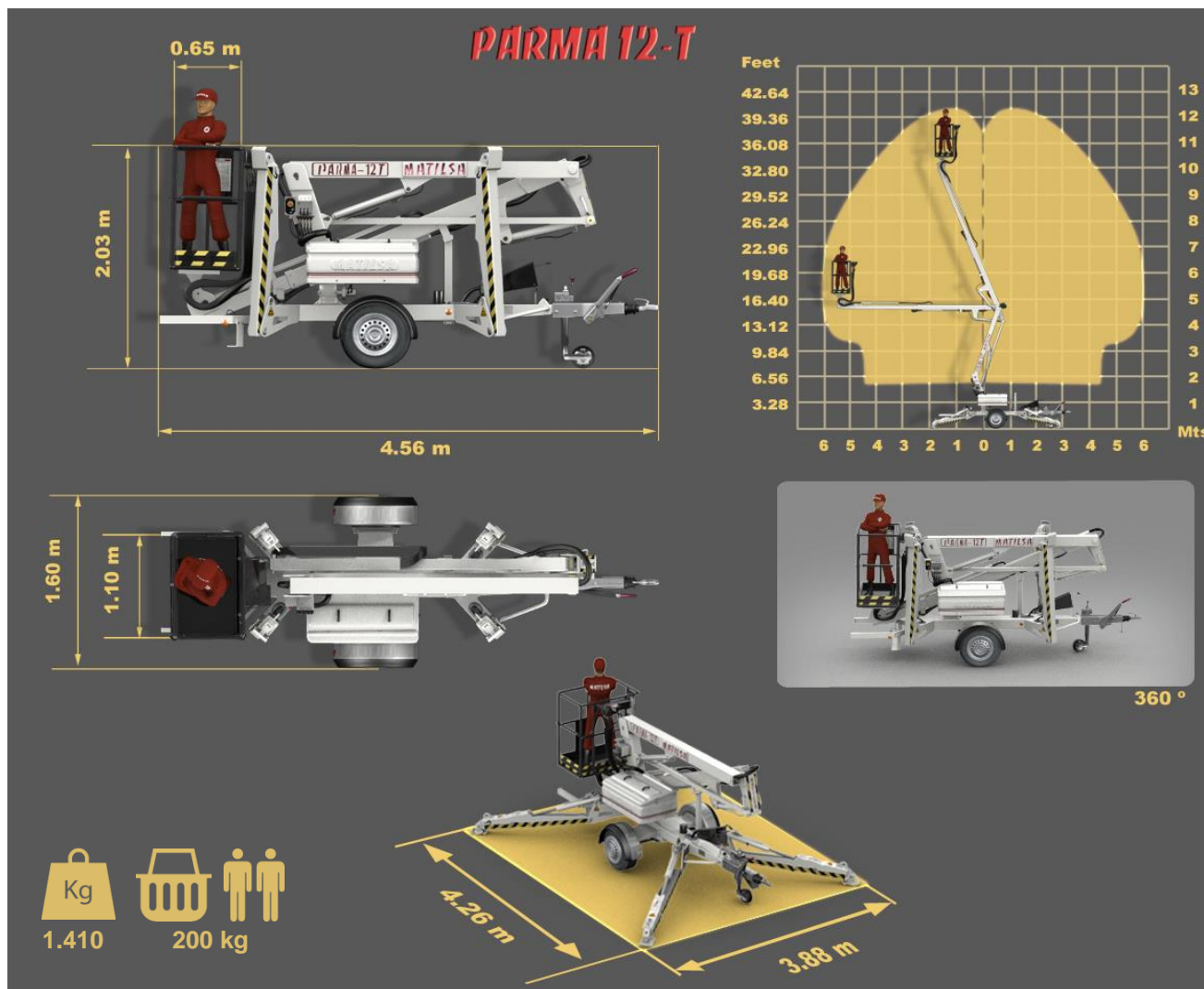
**STANDARD MODEL:**

- \* 230V main power
- \* Visual level for stabilisation
- \* Ball Coupling with inertia brake
- \* Steel basket (1,1 x 0,6) m
- \* Hydraulic stabilizers with safety micro switches
- \* Controls in basket and chassis
- \* Proportional hydraulic controls
- \* Emergency lowering from the ground



Management System  
ISO 9001:2008  
www.tuv.com  
ID 9105060482





### Optional accessories

- 1 Electric outlet in basket
- 2 Descent buzzer
- 3 Spare wheels
- 4 Lighting kit for roads
- 5 Rotating light
- 6 Hour meter
- 7 Bi energy: 230V + (Gasoline or Batteries)
- 8 Batteries main power
- 9 Bi energy: Batteries + Petrol Engine
- 10 Charge indicator for batteries
- 11 Self driving system on wheels
- 12 Automatic self-leveling for stabilizers
- 13 Insulating basket
- 14 Emergency lowering from the basket
- 15 Hydraulic basket rotation 150°
- 16 Control weight in the basket
- 17 Support pads (40 x 30) cm
- 18 Stabilizer for ball and ring coupling
- 19 Ring coupling



**PARMA 15**

**AERIAL TRAILER MOUNTED PLATFORM ARTICULATED, FOR WORKING HEIGHTS UP TO 15 METER (49,21 FEET)**

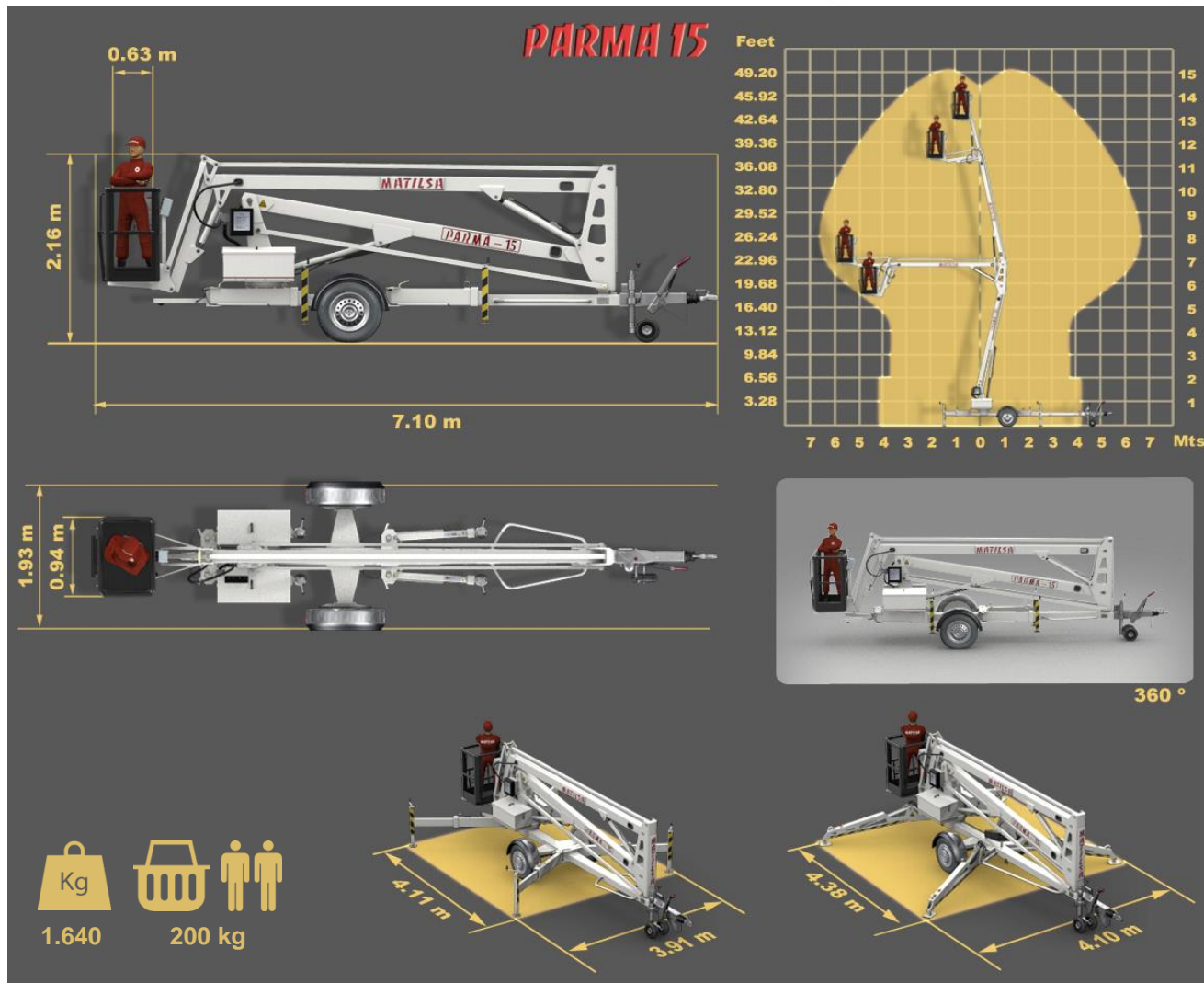
**STANDARD MODEL:**

- \* 230V main power
- \* Visual level for stabilisation
- \* Ball Coupling with inertia brake
- \* Steel basket (1,1 x 0,60) m
- \* Manual stabilizers with safety micro switches
- \* Controls in basket and chassis
- \* Proportional hydraulic controls
- \* Emergency lowering from the ground
- \* 90° jib





**Optional accessories**



- 1 Electric outlet in basket
- 2 Descent buzzer
- 3 Spare wheels
- 4 Rotating light
- 5 Hour meter
- 6 Lighting kit for roads
- 7 Hydraulic stabilizers
- 8 Automatic self-leveling for stabilizers
- 9 Self driving system on wheels
- 10 Bi energy: 230V + (Gasoline or Batteries)
- 11 Bi energy: 230V + Diesel Engine
- 12 Batteries main power
- 13 Bi energy: Batteries + Petrol Engine
- 14 Bi energy: Batteries + Diesel Engine
- 15 Charge indicator for batteries
- 16 Insulating basket
- 17 Aluminium basket 1,9m + basket load
- 18 Iron fer (1,4 x 0,7) m
- 19 Emergency lowering from the basket
- 20 Control weight in the basket
- 21 Hydraulic basket rotation
- 22 Support pads (40 x 35)cm
- 23 Stabilizer for ball and ring coupling
- 24 Ring coupling





**PARMA 15T**

**AERIAL TRAILER MOUNTED PLATFORM ARTICULATED AND TELESCOPIC, FOR WORKING HEIGHTS UP TO 15 METER (49,21 FEET)**

**STANDARD MODEL:**

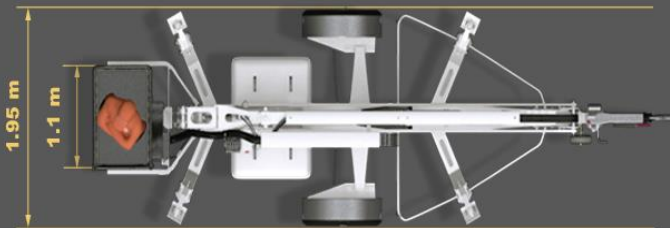
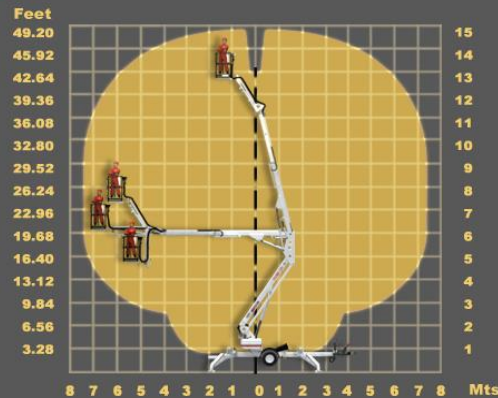
- \* 230V main power
- \* Visual level for stabilisation
- \* Ball Coupling with inertia brake
- \* Steel Basket (1,1 x 0,6) m
- \* Hydraulic stabilizers with safety micro switches
- \* Controls in basket and chassis
- \* Proportional hydraulic controls
- \* Emergency lowering from the ground
- \* 150° jib





**PARMA 15T**

**PARMA 15-T**



360°



1.900

200 kg

**Optional accessories**

- 1 Electric outlet in basket
- 2 Descent buzzer
- 3 Spare wheels
- 4 Rotating light
- 5 Hour meter
- 6 Lighting kit for roads
- 7 Hydraulic basket rotation 150°
- 8 Bi energy: 230V + (Gasoline or Batteries)
- 9 Bi energy: 230V + Diesel Engine
- 10 Batteries main power
- 11 Bi energy: Batteries + Petrol Engine
- 12 Bi energy: Batteries + Diesel Engine
- 13 Charge indicator for batteries
- 14 Insulating basket
- 15 Emergency lowering from the basket
- 16 Control weight in the basket
- 17 Self driving system on wheels
- 18 Automatic self-leveling for stabilizers
- 19 Support pads (40 x 30)cm
- 20 Stabilizer for ball and ring coupling
- 21 Ring coupling

|





**PARMA 17**

**AERIAL TRAILER MOUNTED PLATFORM ARTICULATED AND TELESCOPIC, FOR WORKING HEIGHTS UP TO 17 METER (55,70 FEET)**

**STANDARD MODEL:**

- \* 230V main power
- \* Visual level for stabilisation
- \* Ball Coupling with inertia brake
- \* Aluminium Basket (1.10 x 0.60) m
- \* Hydraulic stabilizers with safety micro switches
- \* Controls in basket and chassis
- \* Proportional hydraulic controls
- \* Emergency lowering from the ground
- \* 90° jib



Management System  
ISO 9001:2008  
www.tuv.com  
ID 9105060482

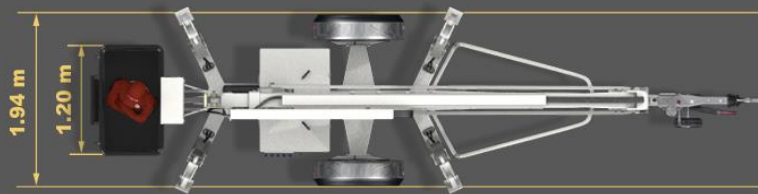
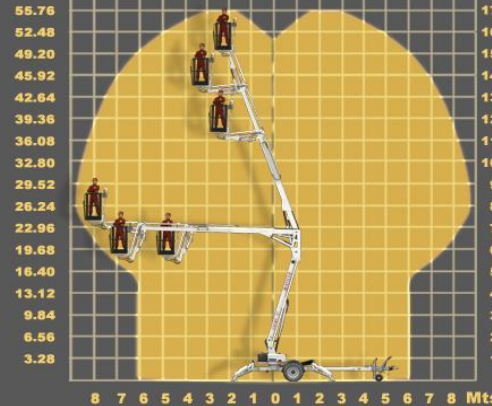


**PARMA 17**



**PARMA 17**

Feet



360 °



**Optional accessories**

- 1 Electric outlet in basket
- 2 Descent buzzer
- 3 Rotating light
- 4 Spare wheels
- 5 Lighting kit for roads
- 6 Hour meter
- 7 Bi energy: 230V + (Gasoline or Batteries)
- 8 Bi energy: 230V + Diesel Engine
- 9 Batteries main power
- 10 Bi energy: Batteries + Petrol Engine
- 11 Bi energy: Batteries + Diesel Engine
- 12 Charge indicator for batteries
- 13 Self driving system on wheels
- 14 Automatic self-leveling for stabilizers
- 15 Insulating basket
- 16 Aluminium basket 1,9m + basket load device
- 17 Control weight in the basket
- 18 Emergency lowering from the basket
- 19 Hydraulic basket rotation 145°
- 20 Support pads (40 x 35)cm
- 21 Stabilizer for ball and ring coupling
- 22 Ring coupling