

Menzi Muck A20

Menzi Muck A40



menzi
muck

The Mini Allterrain Excavator Menzi Muck A20 with 2000 kg.

Engine

Kubota Diesel engine
3-cylinder, water cooled
Displacement 1123 ccm
Output max. 24 PS (17.6 kW)
governed to 21 PS (15.8 kW) @ 2400 rpm

Hydraulic system

3-circuit-system
Total capacity 48 l/min.
Auxiliary hydraulic connection
Working pressure 180 bar

Swing

Hydro engine with planetary gear
Multi-disc brake with brake pressure valve
Slewing speed 9 rpm

Electrical equipment

12 volts
Alternator 1.0 kW
Battery 60 Ah

Measurements and dimensions

Weight	2'000 kg
Excavation height	3'900 mm
Excavation depth	2'600 mm
Discharge height	2'900 mm
Jib Range	4'600 mm
Transport width	960 mm
Transport height	2'500 mm
Dipper length	500 mm
Smallest swivelling radius	1'750 mm

Traction

Hydrostatic wheel hub drive
Speed up to 2.6 km/h
Multi-disc brake
Mechanical uncoupling of traction

Forces

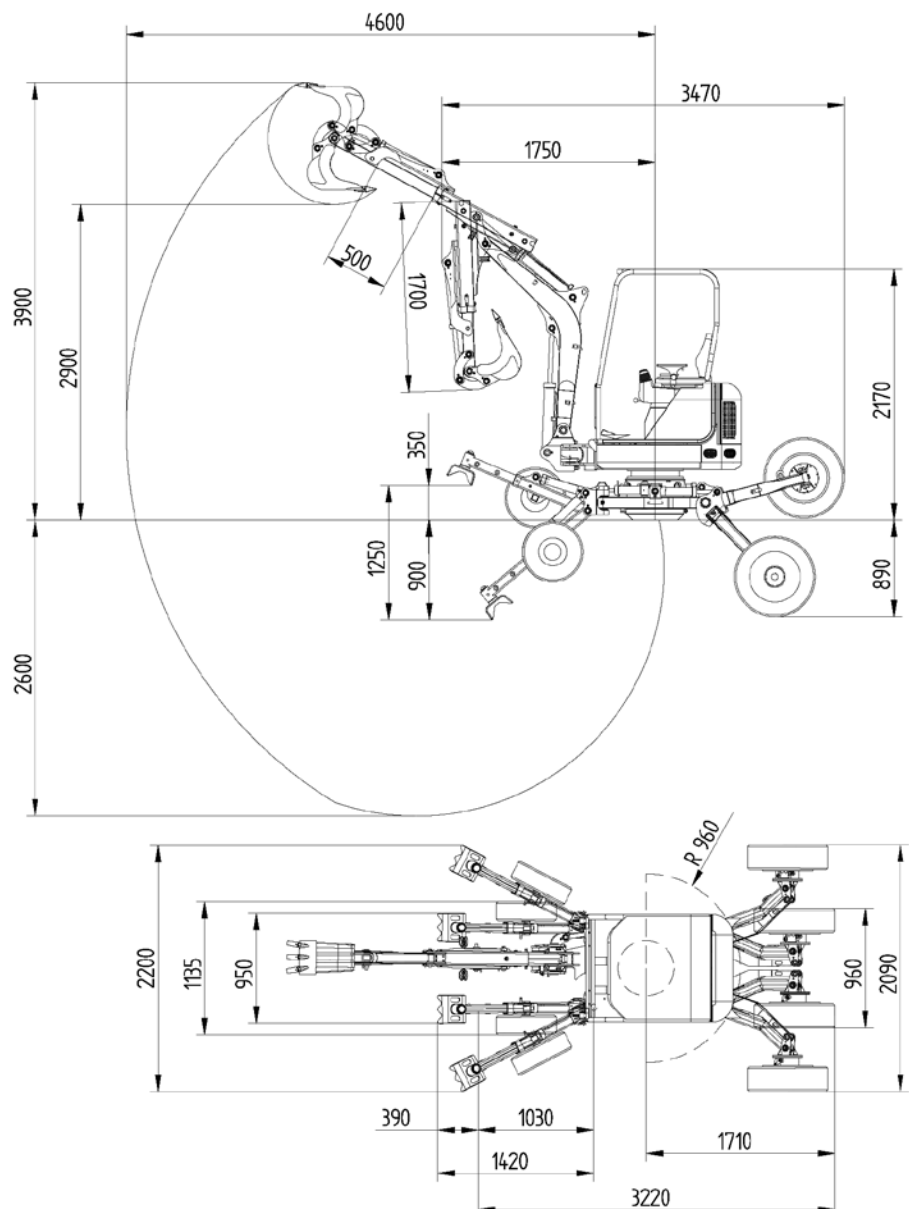
Ripping force 18.kN
Breakout force 11 kN

Standard equipment

Protective roof ROPS-tested
Armrests with control lever
Euro-Control
Hydr. telescope dipper 500 mm
Mec. telescope feet (3 positions)
Working headlights
Hydraulic chassis control cpl.
Swivelable arm

Options

Cab with heating
Customer paint colour



The Mini Allterrain Excavator Menzi Muck A40 with 4500 kg.

Engine

Turbo-Diesel engine Kubota V2607
4-cylindre, water cooled
Displacement 2615 ccm
max. output 67 PS (49 kW)

Hydraulic system

1 Regulated power axial piston pump 90 l / min.
1 gear pump 43 l/min.
Capacity 140 l/min.
Working pressure 220 bar
1 auxiliary hydr. connection on the boom 65 l/min.
2. auxiliary hydr. connection
3. hydr. circuit (hydr. quick changer)

Swing

Hydro engine with planetary gear
Multi-disc brake with brake pressure valve
Slewing speed 10 min⁻¹
Slewing force 12 kN

Elektrical system

12 volts
Alternator 1.0 kW
Battery 60 Ah

Measurements and dimensions

Weight	4'500 kg
Excavation height	5'850 mm
Excavation depth	3'370 mm
Jib Range	6'023 mm
Transport width	1'400 mm
Transport height	2'550 mm
Dipper length	900 mm
Smallest swivelling radius	2'160 mm

Traction

Hydrostatic 2-stage wheel hub drive
1. stage up to 2.3 km/h
2. stage up to 4.6 km/h
Multi-disc brake
Mechanical uncoupling of traction

Forces

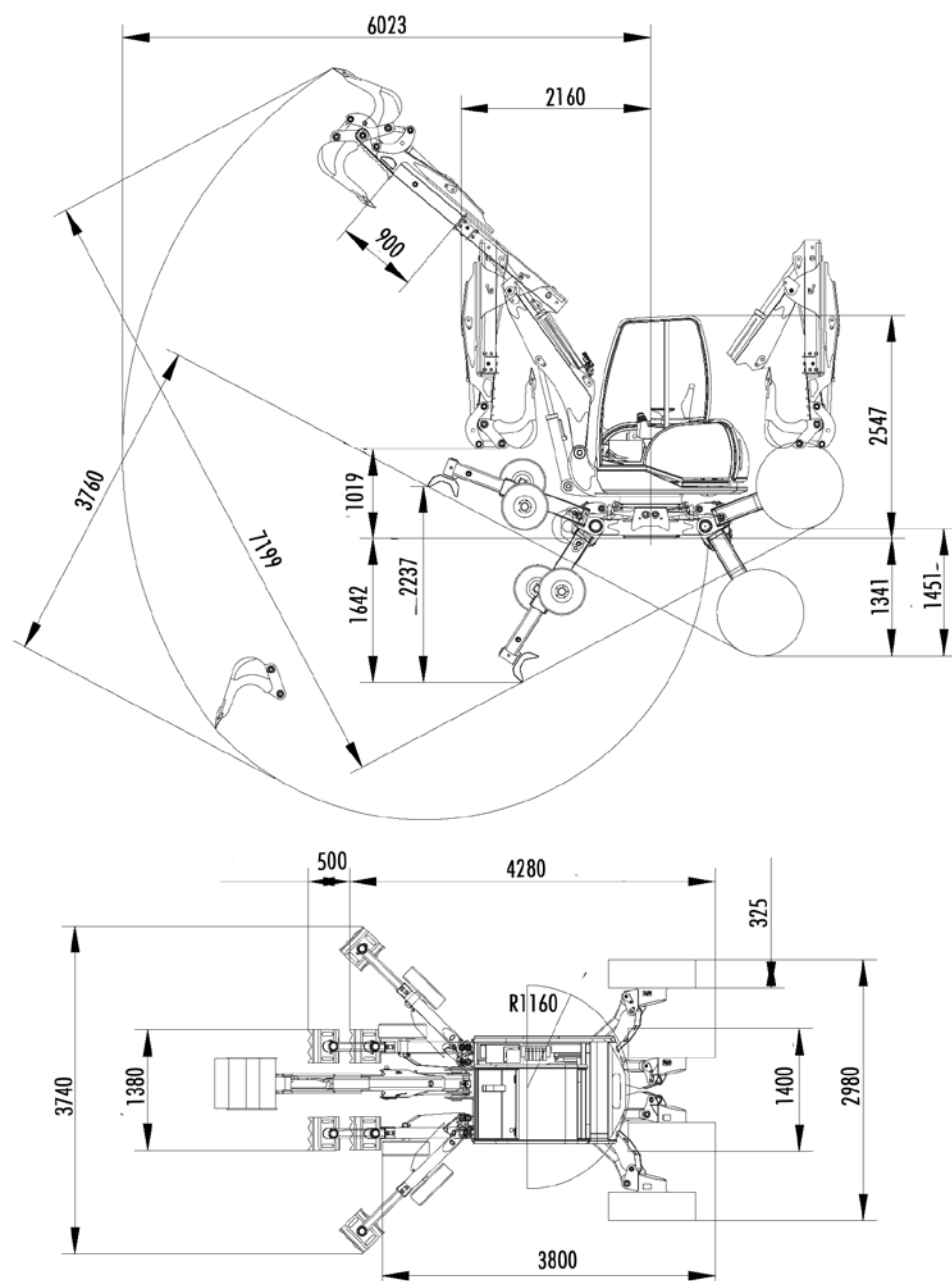
Ripping force 31 kN
Breakout force 23 kN

Standard equipment

Cab with heating
Protective roof ROPS-tested
Armrests with control lever
Euro-Control
Mec. telescope feet (3 positions)
Working headlights
Hydraulic chassis control cpl.

Options

Costumer paint colour

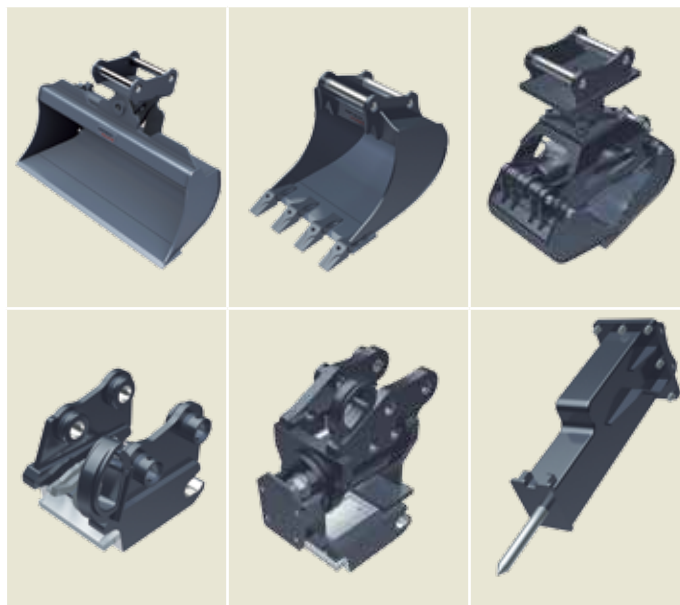


Accessories

Menzi Muck AG is convinced that the quality of the accessories is also important. All buckets, quick changers and universal grabs are of our own design and manufacture.

The following accessories are available for the mini-allterrain mobile excavators Menzi Muck A20 and A40:

- Standard Bucket 300 mm
- Standard Bucket 400 mm
- Standard Bucket 500 mm
- Standard Bucket 600 mm
- Hydraulic Grading Bucket
- Rigid Grading Bucket
- Powertilt Swivel Head (BG 06)
- Mecanical Quick Changer SWM-010
- Hydraulic Hammer
- Universal Grab UG-04



Menzi Muck **M220**

M2



The Menzi M2-series. A clever climbing specialist.

M220

- Hydrostatic two wheel drive over the two big wheels
- Two removable shafts with two small steering wheels
- Hydraulic telescopic stabilization



Economical & efficient. Engine, hydraulic, electric and cooling system.

APM - up to 30% fuel savings

The APM controller (Anticipating Power Management) creates a new, fast and harmonic interplay between the engine and the hydraulics. Overloading is thereby reduced to an absolute minimum. Power, Eco and Fine mode provide extra help in efficient operation of the machines.

Deutz-Power

The powerful 4-cylinder Turbo-Diesel engine of Deutz (55 KW / 75 HP) is ready for even stricter upcoming emission limits.

Cooling system

Generously dimensioned cooling system, three separate coordinated cooler elements for hydraulic oil/ charge air/ water, maximum cooling capacity through side-by-side arrangement of the cooling elements, variable fan motor, option: swing condenser-element for air-conditioning.

Options

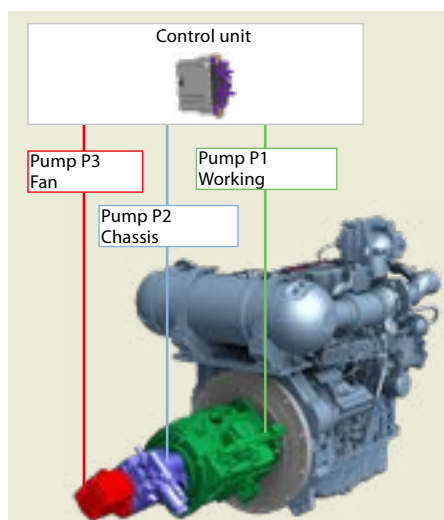
- automatic central lubrication system
- biodegradable hydraulic oil
- hydraulic affluent filter
- heavy lifting and road equipment
- hydraulic preparation for winch
- LED-additional light on the boom
- special color
- leakage line
- electrically switchable check valves
- additional safety valves on the dipper cylinder
- lock out switch
- Adjustable claws
- FOPS Roof grid Level II

Swiveling with big slewing ring

An axial piston motor with automatic multi-disc stop brake acts via a planetary gear on the internal gearing of the large-dimensioned, double-row slewing ring (Ø 1000 mm). The maximum slewing force is available over the entire speed range.

Hydraulic system

Sensitive Load Sensing hydraulic system. The harmonious operating cycle is geared towards smooth and optimised performance. A high pressure piston pump for working and driving, an piston pump for chasis and a gear pump for the fan.



Stage V

Hydraulic cylinders

All cylinders on the chassis are equipped with check valves for safety. All cylinders on the boom are equipped with cushioning.

Hydraulic circuits

The required liter /gallons quantities of the hydraulic auxiliary circuits can be selected on the color display.

Circuit 1 (on the boom)

up to 150 l/min. - 39.6 US-gall./min. through proportional foot pedal - double acting

Circuit 2 (on the boom)

up to 40 l/min. - 10.6 US-gall./min. through proportional-rocker switch on the right joystick - double acting

Circuit 3 (on the boom)

up to 40 l/min. - 10.6 US-gall./min. s/w on left joystick - double acting

Circuit 4 (on the boom)

for hydraulic quick changer from pilot pressure - double acting

Hydraulic winch preparation (chassis)

up to 100 l/min. - 26.4 US-gall./min. through switch on the left joystick - double acting (option)

Return line (on the boom)

for hydraulic hammer

Leakage line (option)

Menzi Muck the technology leader. Innovations that make us number one.

The M2-Dual-Drive

The new, electronically controlled drive system ensures precise and regular propulsion up to 8 km/h / 5 mph. Depending on the steering angle, distribution of wheel speeds and driving forces are equally and continuously adapted to the driving situation.

The M2 stabilisation

The enormous adjustment range of the M2 chassis creates an excellent balance angle on steep slope.

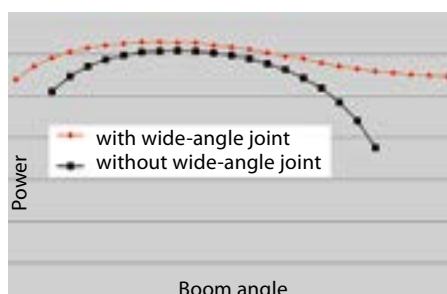
Proved Menzi powerboom

There is a lot of innovation in the proven and unique boom of the M-series. Unique to Menzi Muck, the boom cylinder is mounted horizontally in the center part. Collisions at the boom cylinder are therefore impossible.

Wide-angle kinematics with power booster

The kinematics of Menzi Muck opens new dimensions: optimum work in the close-up range at the minimum possible swivel radius is contrasted with maximum stretching of the boom. The Menzi power booster thereby supplies the highest possible forces over the whole working range.

Kinematics comparison at the dipper



Flying made easy!

In just a few steps, the Menzi Muck M2 can be disassembled for transport by helicopter, funicular or crane to the desired individual sizes. Clever auxiliary equipment facilitate this work enormously.



**menzi
muck**

The panorama cockpit. The operator is most important.

Operators cockpit

A free view of the entire working environment, the support and the wheels, provide the operator with safety and complete control in all situations. The spacious cab provides a perfect sense of space and many practical details for relaxed working.

Comfort and safety

From the ergonomic joystick with proportional rocker and hand support to the air-suspended operator's seat right up to adjustable armrests and foot pedals, no stone has been left unturned to provide the operator with a maximum of comfort.



Color display & control unit

Free adjustable 7-inch color display with integrated control units and memory capacity for various attachments.

Extensive standard equipment

ROPS (Roll-Over-Protection-System) according to DIN ISO 3471, cast parts at the upper structure used as fenders, side and rear covers are opened supported by gas-pressure springs, diesel fuel pump with auto stop, integrated tool box, DAB+ radio with MP3-player, powerful heating with six individual adjustable air nozzles, pollen and recirculated air filter, 4 LED-spotlights (2 in the front, 2 in the rear), etc.

Numerous cab options

Air-conditioning, heater with time clock, rotating beacon, four point safety harness

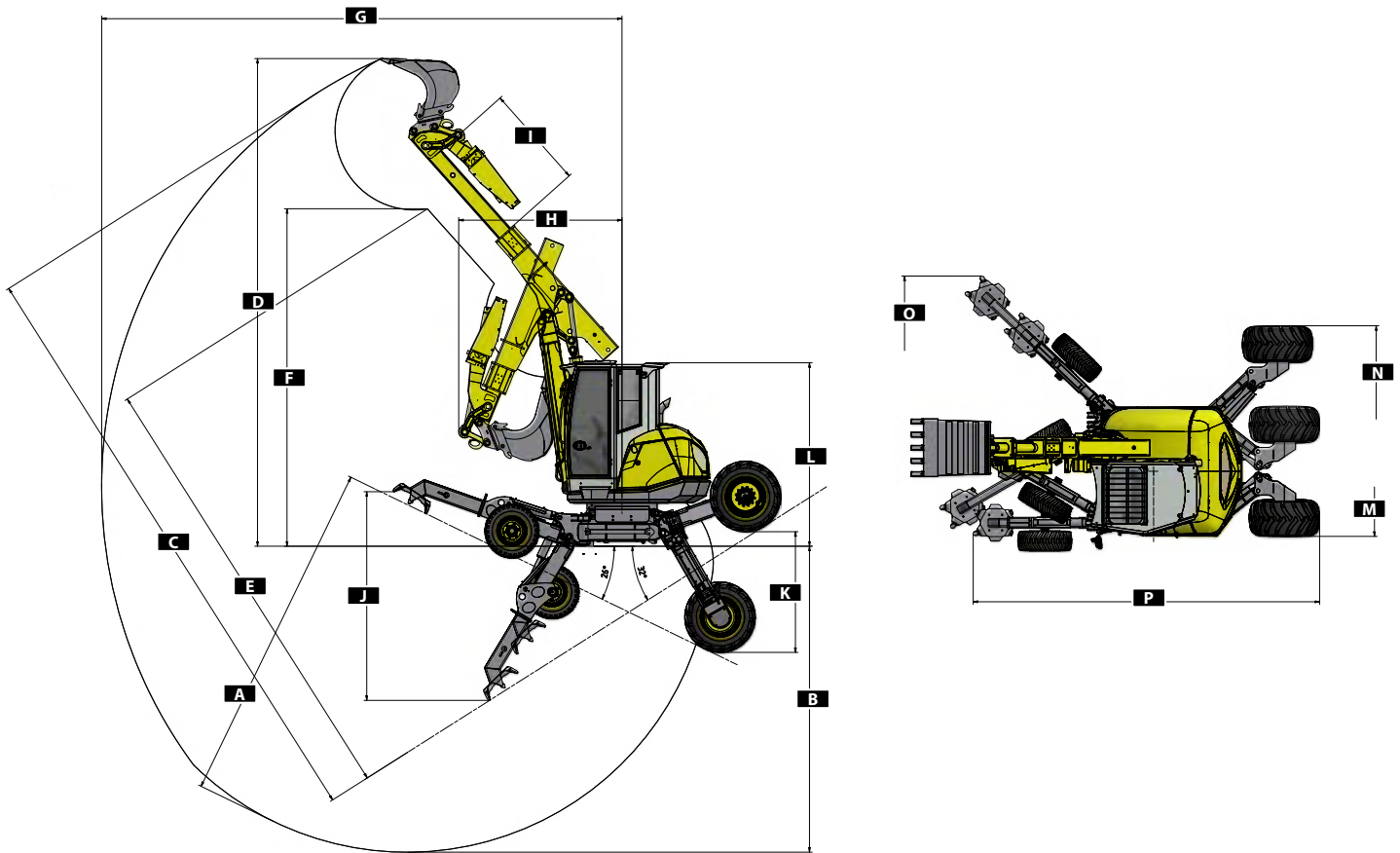


The Menzi Muck M2. It`s technical data say it all.

Lifting capacity @ 3.0 m	max. 5600 kg	12346 lb
Lifting capacity@ 4.5 m	max. 3200 kg	7055 lb
Lifting capacity@ 6.0 m	max. 2100 kg	46230 lb
Breakout force	75 kN	7648 kp
Ripping force	43 kN	4385 kp
Weight without accessories	> 7100 kg	15653 lb
Turning radius	6800 mm	22'3"
Speed	8 km/h	5 mph
Steering wheels	12.5/60-15	
Hub drive	500/45-20 & 445/70-R19	
Operating tank	125 liters	33.0 US-gall.
Additiional tank in the chassis	210 liters	55.5 US-gall.
Content of hydr. system	190 liters	50.2 US-gall.



Dimensions without PowerTilt. Technical data vary upon tyre/tool



Dimensions in mm / "		Menzi Muck M220	
A	Max. Excavation depth with adjusted chassis	4770	15'6"
B	Max. Excavation depth chassis horizontal	4250	13'9"
C	Max. Excavation height with adjusted chassis	8410	27'6"
D	Max. Excavation height chassis horizontal	6780	22'2"
E	Max. Discharge height with adjusted chassis	6230	20'4"
F	Max. Discharge height chassis horizontal	4690	15'4"
G	Max. Jib Range	7210	23'7"
H	Min. Swivelling radius	2270	7'4"
I	Dipper length	1400	4'6"
J	Positioning range stabilizers	2900	9'5"
K	Positioning range hub drive	1680	5'5"
L	Transport height	2550	7'4"
M	Minimum width hub drive, transport width	1810	5'9"
N	Max. positioning width hub drive	4040	13'3"
O	Max. positioning width stabilizers	5420	17'8"
P	Chassis length	4810	15'8"

Follow us.



www.menzimuck.com



[menzimuckcom](https://www.instagram.com/menzimuckcom)



[menzimuckcom](https://www.facebook.com/menzimuckcom)



[Menzi Muck AG](https://www.linkedin.com/company/menzi-muck-ag)



[menzimuckcom](https://www.youtube.com/menzimuckcom)

Technical data subject to change / 1022

Menzi Muck **M320**
Menzi Muck **M325**
Menzi Muck **M335**
Menzi Muck **M340**

M3



**The Menzi Muck M3.
Agile, efficient and the technology leader.**

**menzi
muck**

The approved Menzi M3-series. The overview of the models.



M320

- Hydrostatic two wheel drive over the two big wheels
- Two removable shafts with two small steering wheels
- Hydraulic telescopic stabilization



M325

- Same as Menzi Muck M320 with*
- drive by two big steering wheels (hydraulic rear steering)

M335

- Hydrostatic four wheel drive over two big and two small wheels
- Hydraulic telescopic stabilization
- drive by two big steering wheels (hydraulic rear steering)
- Option: mechanical lifting axle, lockable hydraulically



M340

- Hydrostatic all wheel drive over four big wheels
- P-Matic parallel-stabilization
- Option: mountain steel pads mechanically or hydraulically telescopic



Economical. Agile. Efficient. Engine, hydraulic, electric and cooling system.

APM - up to 30% fuel savings

The APM controller (Anticipating Power Management) creates a new, fast and harmonic interplay between the engine and the hydraulics. Overloading is thereby reduced to an absolute minimum. Power, Eco and Fine mode provide extra help in efficient operation of the machines. Power-lift function for maximum forces.

Engine

The powerful Deutz 4-cylinder turbo diesel engine with 100 kW/136 hp has been ideally adapted to the overall system and guarantees minimum fuel and overall operating costs.

Deutz

With this EU V standard engine, Deutz is relying on selective catalytic reduction, consisting of SCR catalytic converter and additional components, such as injector and AdBlue® supply. Protecting the environment by effectively minimising nitrogen oxide while maintaining the output.

Deutz T3A

Engines with emission standard IIIA are suitable for exports to unregulated countries. Please do not hesitate to contact your customer advisor for more information. www.menzimuck.com/en/service-and-sales/

Cooling

A generously dimensioned, naturally aspirated cooling system for hydraulic oil, charge air and water, three adapted radiator elements, maximum cooling output thanks to side-by-side cooling element arrangement, variable fan motor featuring demand-based drive control and optionally a swivelling condenser element for the air conditioning as well as reversible fan.

Swiveling with big slewing ring

An axial piston motor with automatic multi-disc stop brake acts via a planetary gear on the internal gearing of the large-dimensioned, double-row slewing ring (Ø 1000 mm). The maximum slewing force is available over the entire speed range.

Tank contents

Operating tank: 145 liters / 38.3 US-gall.
Additional fuel tank in the chassis 210 liters / 55.5 US-gall.
AdBlue tank: 20 liters / 5.28 US-gall.
Content of hydraulic system 200 liters / 59.4 US-gall.

Hydraulic system

Sensitive Load Sensing hydraulic system by Linde. The harmonious operating cycle is geared towards smooth and optimised performance.

Hydraulic cylinders

All cylinders on the chassis are equipped with check valves for safety. All cylinders on the boom are equipped with cushioning.

Hydraulic circuits

The required liter /gallons quantities of the hydraulic auxiliary circuits can be selected on the color display.

Circuit 1 (on the boom)

up to 150 l/min. - 39.6 US-gall./min. through proportional foot pedal - double acting

Circuit 2 (on the boom)

up to 100 l/min. - 26.4 US-gall./min. through proportional-rocker switch on the right joystick - double acting

Circuit 3 (on the boom)

for hydraulic quick changer from pilot pressure - double acting (option)

Hydraulic winch preparation (chassis)

up to 120 l/min. - 31.7 US-gall./min. through switch on the left joystick - double acting (option)

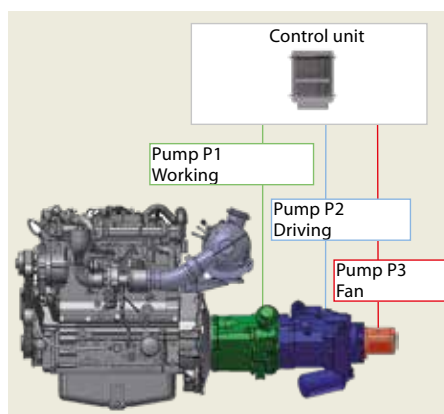
Return line (on the boom)

for hydraulic hammer

Leakage line (option)

Options

- automatic central lubrication system
- biodegradable hydraulic oil
- hydraulic affluent filter
- heavy lifting and road equipment
- hydraulic preparation for winch
- leakage line
- lifting limiter
- electrically switchable check valves



Menzi Muck the technology leader. Innovations that make us number one.

Menzi powerboom

There is a lot of innovation in the proven and unique boom of the M-series. Unique to Menzi Muck, the boom cylinder is mounted horizontally in the center part. Collisions at the boom cylinder are therefore impossible.

Wide-angle kinematics with power booster

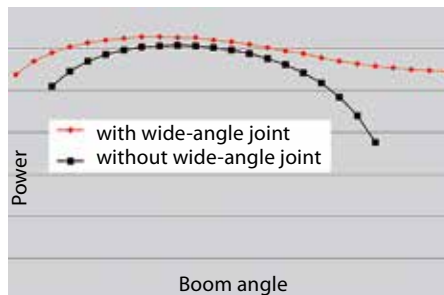
The kinematics of Menzi Muck opens new dimensions: optimum work in the close-up range at the minimum possible swivel radius is contrasted with maximum stretching of the boom. The Menzi power booster thereby supplies the highest possible forces over the whole working range.

Maximum telescopic power

A new, sophisticated, hydraulic gearing enables ideal use of the telescopic arm in any operating situation. The gearing multiplies the applicable force at the telescope. An ideal force/speed relation is generated in combination with the wide angle kinematics.

Unrivaled forces

Lifting capacity @ 3.0 m	6200 kg / 13669 lb
Lifting capacity@ 4.5 m	3800 kg / 8378 lb
Lifting capacity@ 6.0 m	2700 kg / 5952 lb
Breakout force	90 kN / 20230 lbf
Ripping force	58 kN / 13040 lbf
Thrust force telescope	178 kN
Swing torque	44 kNm



Tool management

The required litre/US-gall. volumes can be stored at the display for up to 15 accessories. Simply select the corresponding preprogramming to change the tool.

Digging arc comparison

The new arm kinematics results in more working area.



menzi
muck

The panorama cockpit. The operator is most important.

Panorama cockpit

A free view of the entire working environment, the support and the wheels, provide the operator with safety and complete control in all situations. The spacious cab provides a perfect sense of space and many practical details for relaxed working.

Comfort and safety

From the ergonomic joystick with proportional rocker and hand support to the standard air-suspended Grammer operator's seat right up to adjustable armrests and foot pedals, no stone has been left unturned to provide the operator with a maximum of comfort.

Comprehensive standard equipment

"Roll-Over Protection System" – ROPS as per (DIN ISO 3471), cast parts on the upper structure as impact protection, side and rear panels featuring gas shocks to facilitate opening, reversing camera, diesel input pump including limit stop, cyclone air filter, integrated tool compartment, DAB+ radio, CD/MP3 player, powerful heating with seven individually adjustable air vents, pollen and air recirculation filter, five LED headlights (three facing forwards, two facing towards the rear), etc.

Dashboard with LCD-Display

Clear and ergonomic arranged instrument panel. Analog controls with integrated color display to show the most important indicators. Various control elements with LED-illuminated toggles switches.



Numerous cab options

- air-conditioning
- Grammer Evolution operator's seat
- heater with time clock
- rotating beacon
- lighting system on the roof with up to 10 LED- spotlights
- four point safety harness
- FOPS security grid roof
- protective grid on the windshield
- security glazing (polycarbonate/lexan)
- LED-additional light on the boom
- additional external tool box
- special color
- telediagnostic service / lock out switch



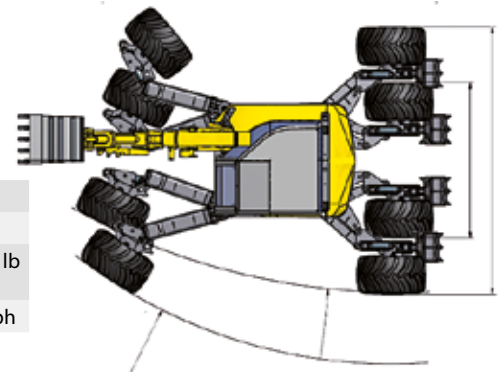
The Menzi Muck M3.

The climbing specialist.

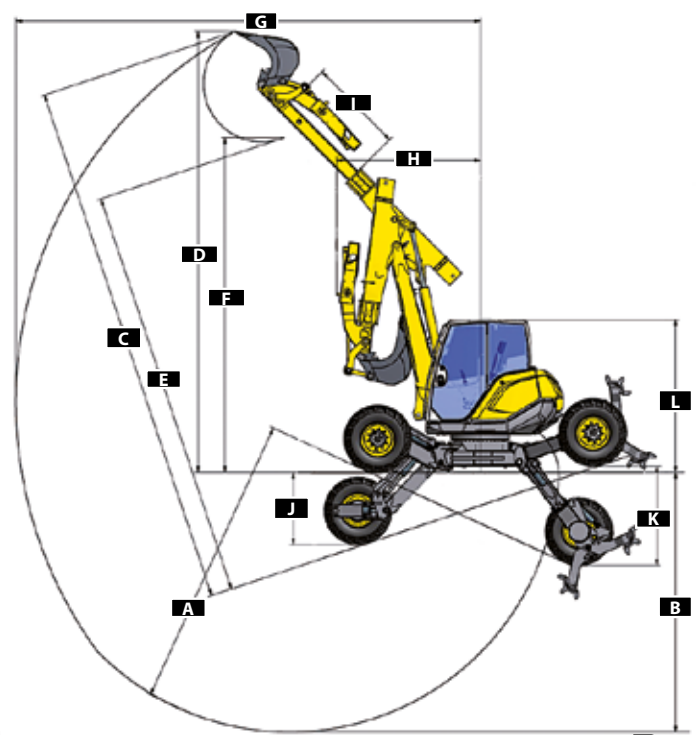
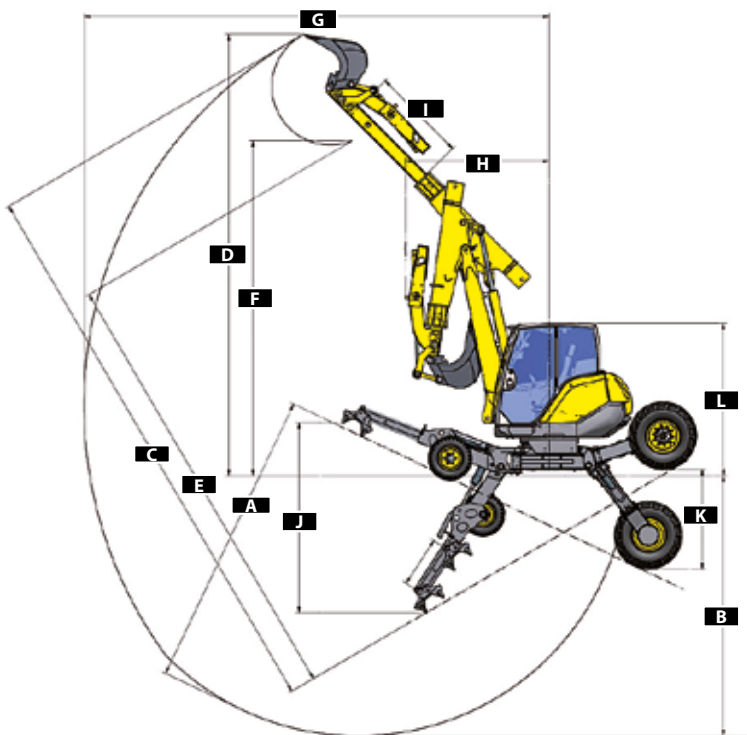
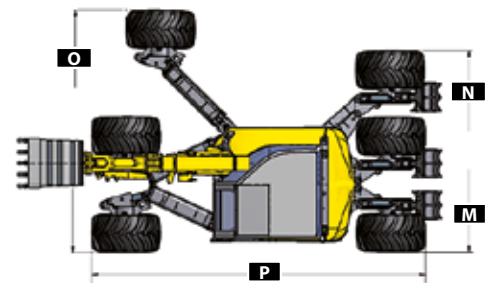
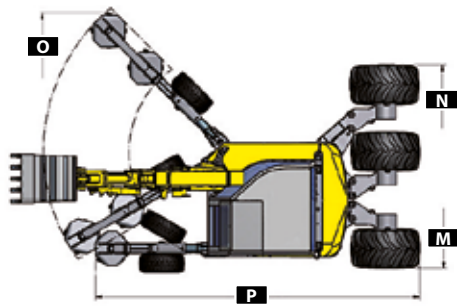
Dimensions in mm / "		M320		M325		M335		M340	
A	Max. Excavation depth with adjusted chassis	5000	16'4"	5000	16'4"	5000	16'4"	4910	16'1"
B	Max. Excavation depth chassis horizontal	4350	14'3"	4350	14'3"	4350	14'3"	4350	14'3"
C	Max. Excavation height with adjusted chassis	9390	30'9"	9450	31'	9450	31'	8830	28'11"
D	Max. Excavation height chassis horizontal	7380	24'2"	7380	24'2"	7380	24'2"	7380	24'2"
E	Max. Discharge height with adjusted chassis	7440	24'4"	7500	24'7"	7500	24'7"	6890	22'7"
F	Max. Discharge height chassis horizontal	5600	18'4"	5600	18'4"	5600	18'4"	5600	18'4"
G	Max. Jib Range	7770	25'5"	7770	25'5"	7770	25'5"	7770	25'5"
H	Min. Swivelling radius	2410	7'10"	2410	7'10"	2410	7'10"	2410	7'10"
I	Dipper length	1600	5'3"	1600	5'3"	1600	5'3"	1600	5'3"
J	Positioning range stabilizers (M340: front wheels)	3180	10'5"	3180	10'5"	3180	10'5"	1220	4'
K	Positioning range hub drive (M340: rear wheels)	1660	5'5"	1670	5'5"	1670	5'5"	1660	5'5"
L	Transport height	2550	8'4"	2550	8'4"	2550	8'4"	2550	8'4"
M	Minimum width hub drive, transport width	2220	7'3"	2350	7'8"	2360	7'8"	2220	7'3"
N	Max. positioning width hub drive (M340: rear wheels)	4380	14'4"	4600	15'1"	4600	15'1"	4380	14'4"
O	Max. positioning width stabilizers (M340: front wheels)	6100	20'	6100	20'	6100	20'	5700	18'8"
P	Chassis length	5275	17'3"	5500	18'	5500	18'	5460	17'11"

Dimensions without Powerlift. Technical data vary upon tyre/tool





	M320		M325		M335		M340	
Turning radius	7000 mm	22'11"	5200 mm	17'	5200 mm	17'	8100 mm	26'6"
Weight without accessories	9400 kg	20723 lb	9900 kg	21826 lb	10600 kg	23369 lb	10700 kg	23589 lb
Speed	12 km/h	7.5 mph	12 km/h	7.5 mph	11 km/h	6.8 mph	10 km/h	6.2 mph



More information.



www.menzimuck.com

- entire product range
- distributors and service network
- company infos
- calendar of trade fairs and open doors
- multimedia (brochures, guides, photographs, videos, ...)
- multilingual
- and much more



www.facebook.com/menzimuckcom

- product and company news
- discussions over the Menzi Muck
- events
- contributions from other Menzi Muck operators and fans
- history of the Menzi Muck



www.youtube.com/menzimuckcom

- events and special reports
- TV-reports
- Menzi Muck working
- accessories in action



https://www.menzimuck.com/gebrauchtmarkt/

- several used machines/accessories with foto
- free ads for private offers and requests

Menzi Muck M4x

M425x
M435x
M445x



menzi
muck

M4x

Latest technology & innovation





Triple Power Boom

With the M4x series, the unique, patented and proven Menzi Muck boom kinematics have been taken yet another step further. The result is a kinematic arm that makes this walking excavator a mountain specialist. The clever arm continuously yields sufficient power to the machine so that it can move dynamically in the terrain without additional options. Thanks to 114% higher force at the boom cylinder, going off-road becomes child's play.



Chassis

Innovative, patented undercarriage concept with optimal kinematics at ideal power ratios P-Vation for horizontal and vertical parallel wheel adjustment Powerful H-Drive travel drive for uncompromising working and driving Perfected mountain stabilizers and an ideal articulation point matched to the angle of the slope



New Design by Alberto Bicego

The Menzi Muck M4x walking excavator series is not only excels regarding technology and performance, but also focuses on a modern, innovative design that is both functional and practical. The strategic design means the components of the upper carriage and cab have been optimally adapted to meet the demands on our machine.



I-Control

The intelligent machine control architecture permits the full exploitation of the walking excavator's potential. The software-controlled electronics open up a wide range of possibilities for the hydraulic system. An intuitive operating concept, new functions such as I-Steering, and intelligent interfaces for attachment devices complete the system. The result: increased efficiency, reduced fuel consumption, more direct control and exceptional sensitivity paired with maximum precision and power.



Spacious panoramic cab

Best all-round visibility, state-of-the-art cab design and optimised ergonomics for healthy, concentrated and fatigue-free work. Redesigned thermal management with increased heating and cooling capacity for maximum comfort. A clear and intuitively designed 12" colour touch screen gives you full control of the machine at all times. Intelligent details such as inductive smartphone charging, a drink cooler and numerous storage compartments make everyday work all that much easier.

Triple Power Boom

The boom kinematics of the Menzi Muck walking excavator are the result of many years of mature innovations. The result is a kinematic arm that makes this walking excavator a slope specialist. The standard, sophisticated kinematics system continuously yields sufficient power to the machine so that it can move dynamically in the terrain. Stepping becomes child's play thanks to 114% extra force on the boom cylinder combined with 22% extra force on the dipper cylinder.

Boom cylinder

The overhead cylinder gives this boom cylinder excellent lifting power and at the same time unrivalled support forces.

Clever line of force

The direct positioning of boom & dipper cylinder provides perfect force guidance.

Wide-angle kinematics and power amplification

Patented arm kinematics for the greatest possible force progression over the entire working range.

Swivelling

It's a Menzi Muck innovation that delivers controlled sensitivity even on the steepest terrain.



Kinematics
Kinematics
possible
over the
range.

Telescope

The 1.6 m extendable telescopic handle gives the arm the reach it needs and completes the Power boom.

Tool interface

Standardised Menzi Muck Mx interface for all attachment devices The interface is in the operator's field of vision at all times, on the left side of the arm.

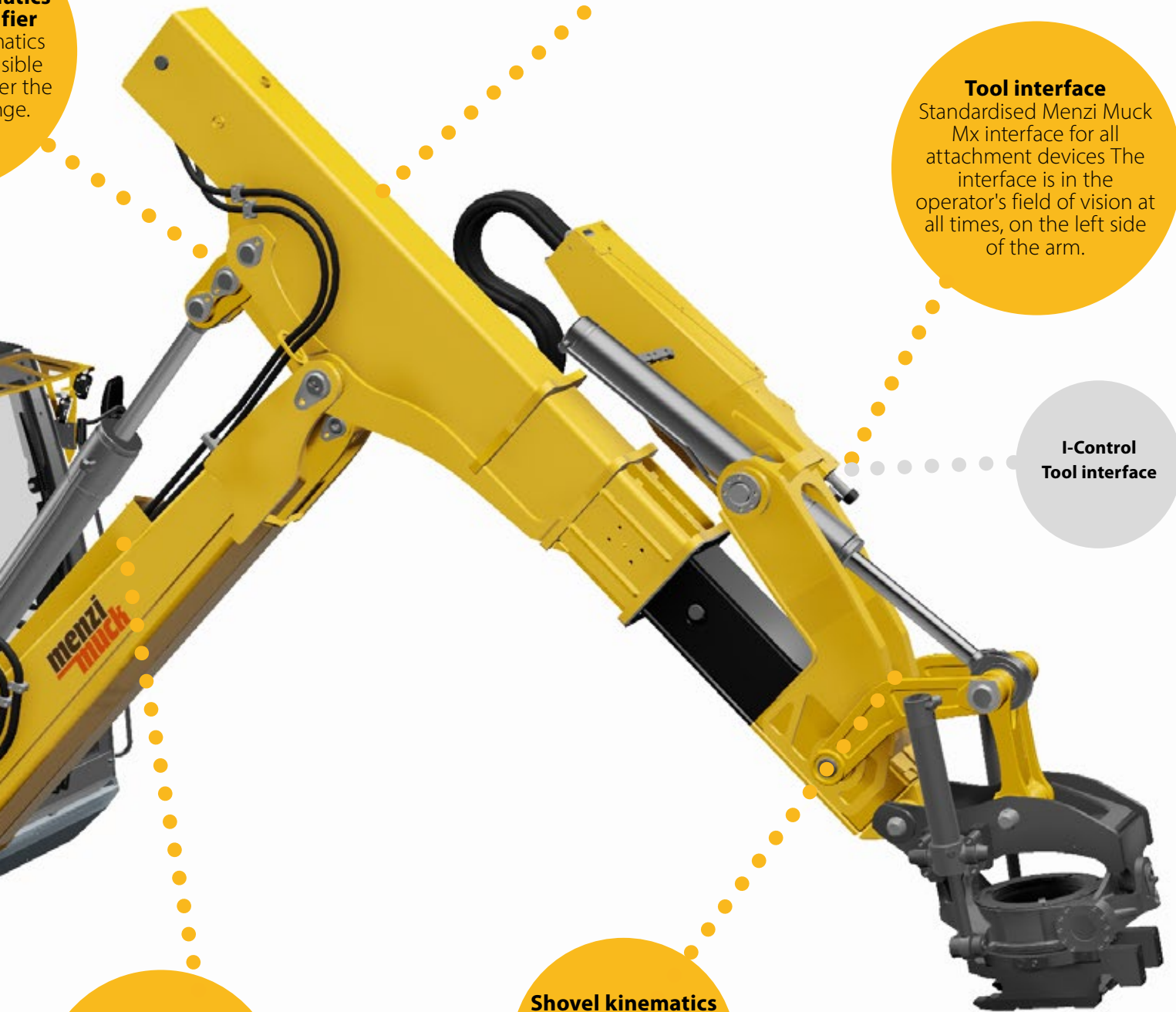
I-Control
Tool interface

Dipper cylinder

The shortened telescope and optimal wide-angle kinematics enable enormous tearing forces.

Shovel kinematics

Remarkable breakaway torque complements this powerful arm.



Modern & functional cab design.

Joystick

The proven and extremely functional Menzi Muck joystick has been enhanced with IX-Steering.

IX-Steering

Turning the joystick creates a new operating level which allows direct steering of the X-chassis.

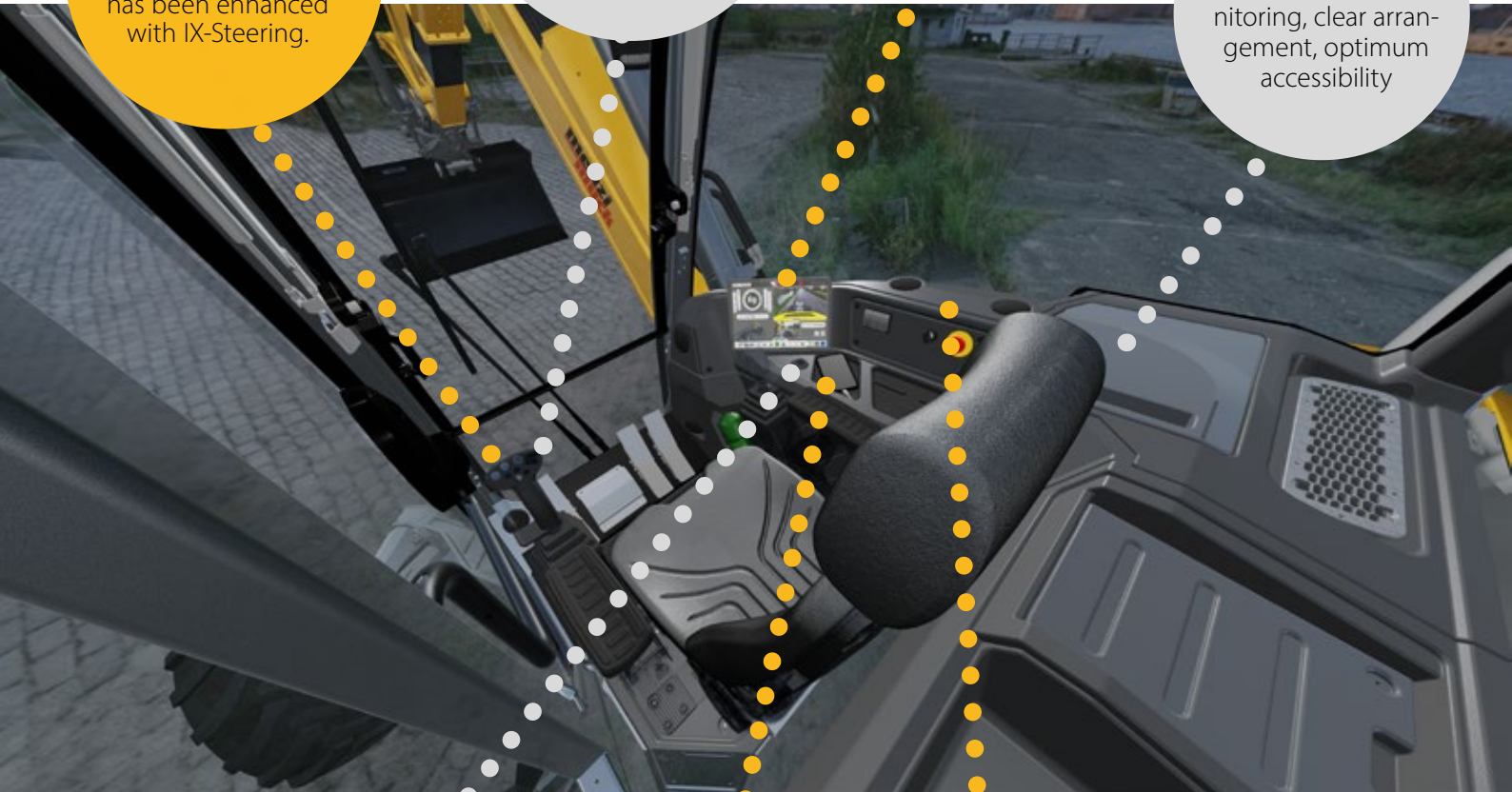
12" touch screen

All information and functions are clearly arranged in the operator's field of vision.

I-CONTROL

Central electrics

Fuses with LED monitoring, clear arrangement, optimum accessibility



I-CONTROL Multifunctional operating concept

Simple and intuitive design Touch screen combined with switches

Inductive smartphone charging

Place the smartphone on the anti-slip mat and it charges automatically.

Air distribution

A large air duct evenly supplies all air outlet nozzles and increases efficiency.

Thermal management

Increased heating and cooling capacity for maximum well-being incl. direct interface to the engine-independent heating

I-Control Engine-independent heating
direct interface to the engine-independent heating



Air distribution

A repositioned air nozzle increases the air flow along the door, optimises defrosting and creates harmonious air distribution in the cabin.

Driver comfort
Storage and cooled drink compartment.

12-inch touch screen

The 12-inch touchscreen was developed and designed by the Menzi Muck software specialists specifically for walking excavator use. The clear design provides a precise display and means easy operation for the user. Simply swipe to the next page or arrange the switches on the display in the way that best suits your application.

Cockpit

Rotational speeds, temperatures and fill quantities clearly at a glance

Camera

Easily change the image and connect up to 4 cameras.

Operator menu

Simply save individualisations.



Customised
arrangement
of the buttons

**Active
functions**
Easy to see
which options
are activated

**Additional
winch menu**
simple
adjustment of
the flow rate

Maintenance & Support

Refuelling

Convenient refuelling of diesel and SCR on the operator's side. The diesel filling pump enables easy handling.



Chassis tank

Tank connections and tank cap are well protected. Filling couplings optionally available

Fleet management

I-Telematik provides efficient management of the Menzi Muck fleet. It covers machine data collection, data analysis, fleet management and service. All important machine data can be accessed at any time via the web browser.



I-Telematik

A data transmission and location system facilitates service & diagnosis and facilitates fleet management.

Resources

Resource-saving hydraulic oil management
An oil analysis (every 1,000 operating hours or after one year) determines the ideal moment for the oil change.



Web service interface

Access your machine's information via the web. Use the data directly in your system.

Engine compartment

Air cleaner in optimum maintenance position, easily accessible: measuring point for hydraulic pressures, oil dipstick with supply connection for engine oil.

Side cover, right

Access to windscreen wiper water reservoir, hydraulic oil filler and hydraulic tank level indicator

I-Control

I-Control

The intelligent machine control architecture facilitates the full exploitation of our walking excavator's potential. The electronics with the software expand the possibilities of the hydraulic system. The result: Increased efficiency, reduced fuel consumption, more direct control and exceptional sensitivity paired with maximum precision and power.

Intelligent performance management

The power of the 3.6 L Deutz engine is distributed to the hydraulic pumps as required. The three modes, Power, Eco and Fine, are perfectly matched to the M4x. The electronics recognise when the operator demands power, meaning that the Deutz diesel engine can be used in a resource-saving manner.

Pump technology

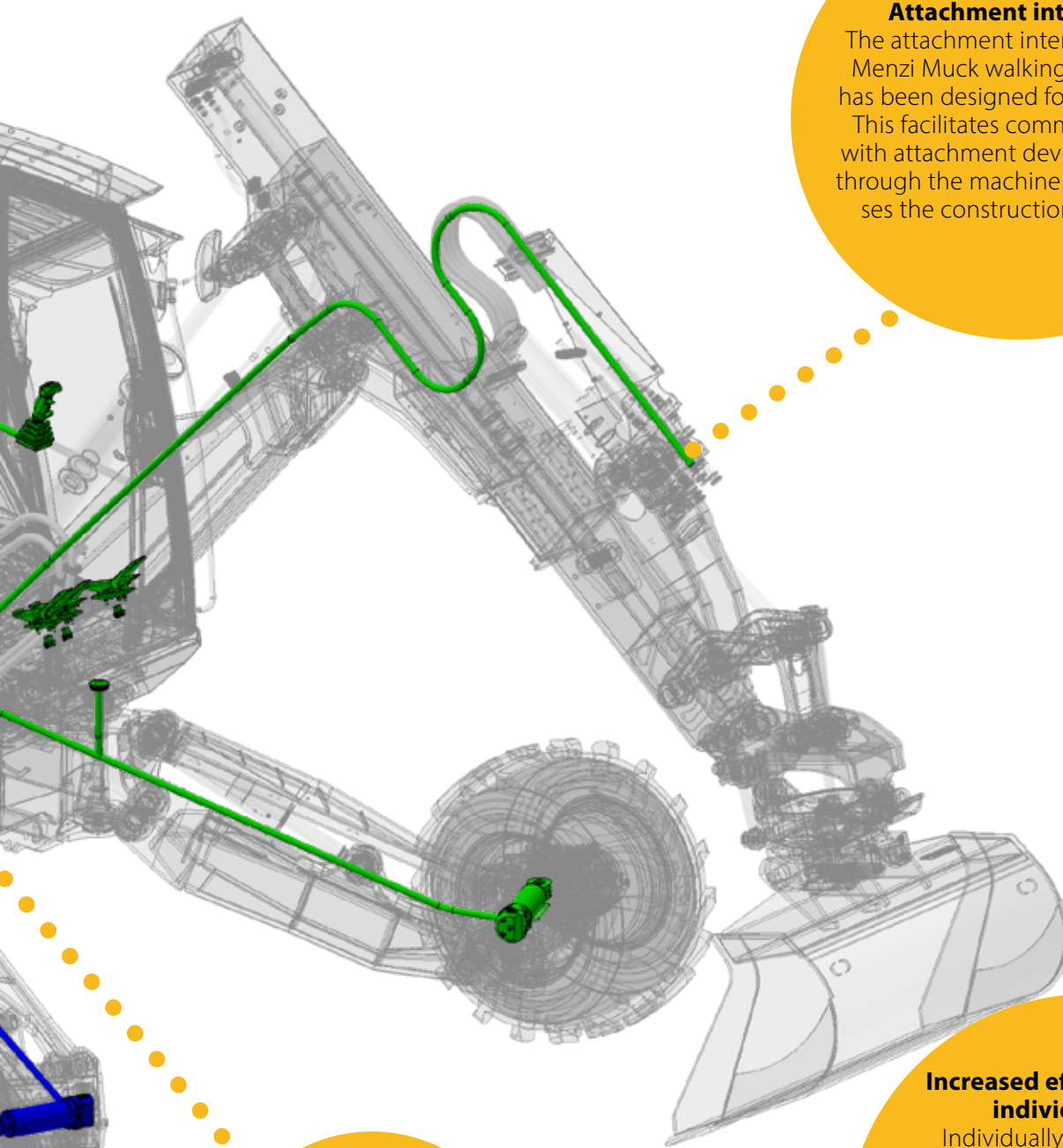
Proven pump technology with modern control technology, combined with innovative pump management increases efficiency and reduces fuel consumption.

Hydraulic oil system

The latest filter technology, a flow-optimised hydraulic tank and monitoring of the return filter with I-Control, extend the service life of the hydraulic oil, reduce maintenance costs.

The latest generation of valve technology

The latest generation hydraulic block provides more direct actuation and exceptional sensitivity plus maximum precision and power.



Attachment interface

The attachment interface of the Menzi Muck walking excavator has been designed for the future. This facilitates communication with attachment devices directly through the machine and optimises the construction process.

Mooring winch

The well-known mooring winch from Menzi Muck can also be used on the M4x, increasing the range of applications.

Increased efficiency through individualisation

Individually designed operator profiles give operators the opportunity to add a personal touch to the walking excavator. The joystick settings can be adjusted individually to suit the implements. The customised profiles can be easily transferred to other machines whenever required.

Chassis Generation X

Exceptional kinematics

P-Vation stabiliser front and rear
Sophisticated arrangement of pivot points on the chassis for horizontal and vertical parallel adjustment of all wheels
Maximum adjustment range and steering angle to increase safety and application possibilities

Tyres up to 710 mm

For special applications and situations, wide tyres up to 710 mm increase safety and usability and reduce ground pressure.

Unrivalled gradient

P-Vation stabiliser for slopes others have to go around.
Unsurpassed slope proximity and maximum wheel width adjustment of over 5,500 mm for true stability.

IX-Steering

Turning the joystick creates a new operating level which allows direct steering of the X-chassis.

Steering mode

Choose between front steering, rear steering, 4-wheel steering or crab steering. You can use IX Steering on the joysticks to correct the stabiliser steering directly, or steer as required, among other things.

Off-road mode

Self-locking differential in slippery or soft conditions for maximum traction and powerful drive

Deep wading

Maximum ground clearance guarantees a fording depth of 2,105 mm for municipal and water applications.

Winch mode

Collision protection of special wire rope winches by electrical disconnection of the stabilisers, individually adjustable.

Chain mode

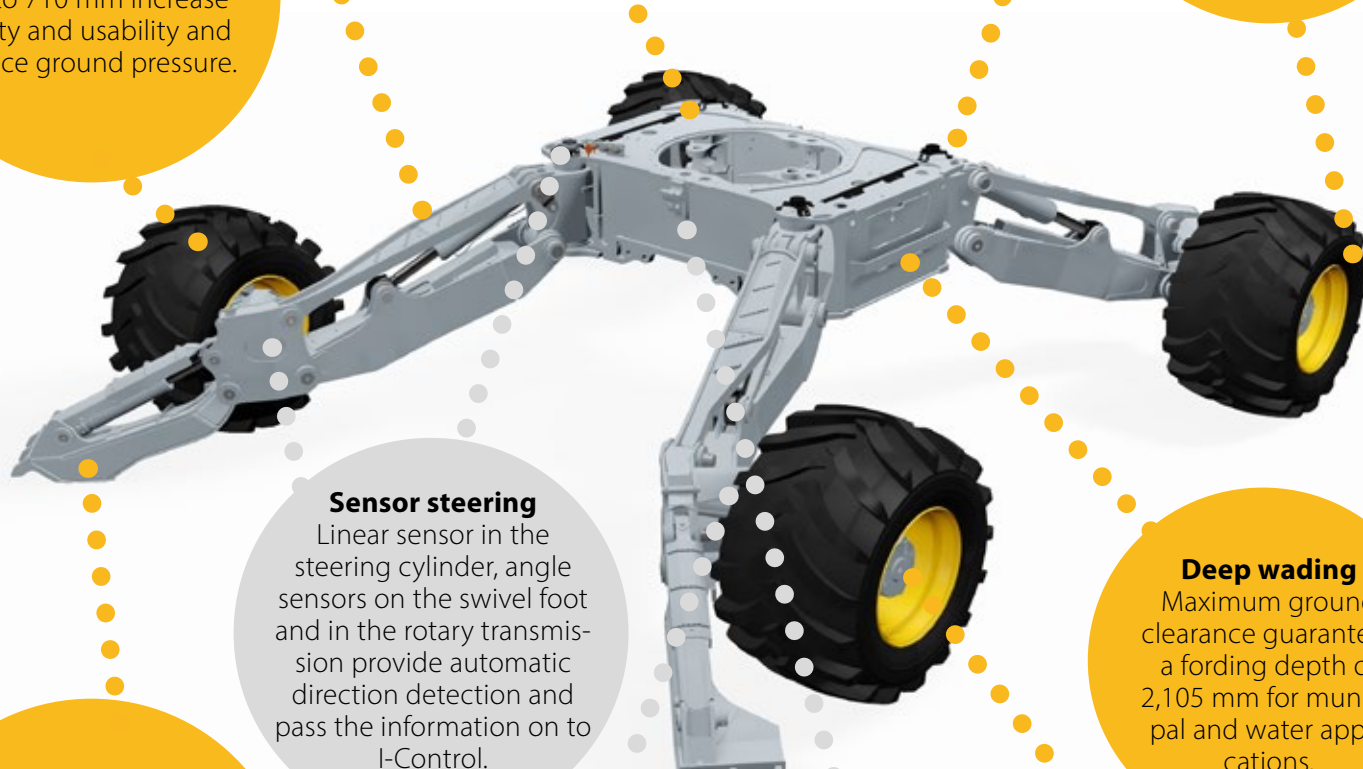
Collision protection through electrical activation of forestry or snow chain mode, individually adjustable

Mountain stabilizer

Perfect for working on very steep terrain, installation of sturdy front and rear mountain stabilizers possible
Optimal design guarantees ideal articulation point matching the angle of the slope.

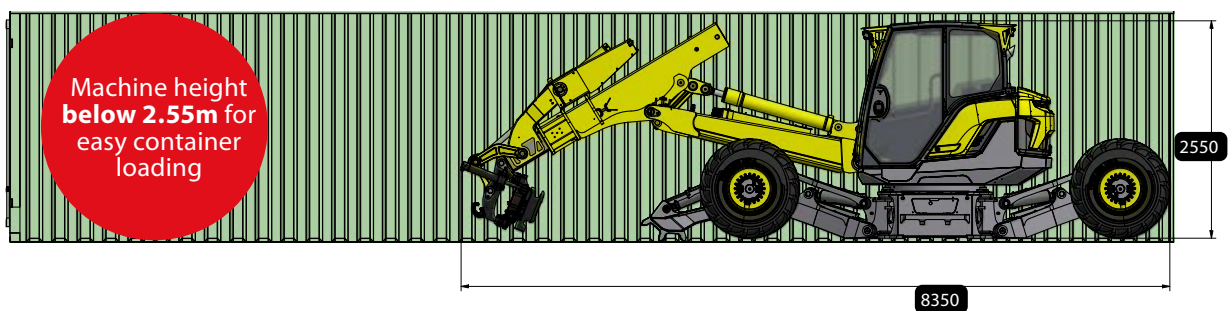
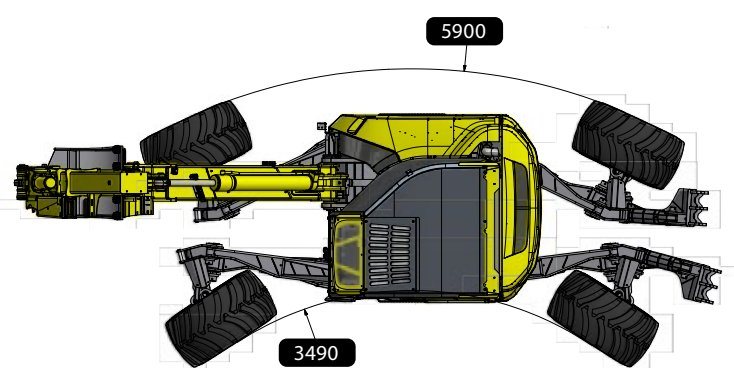
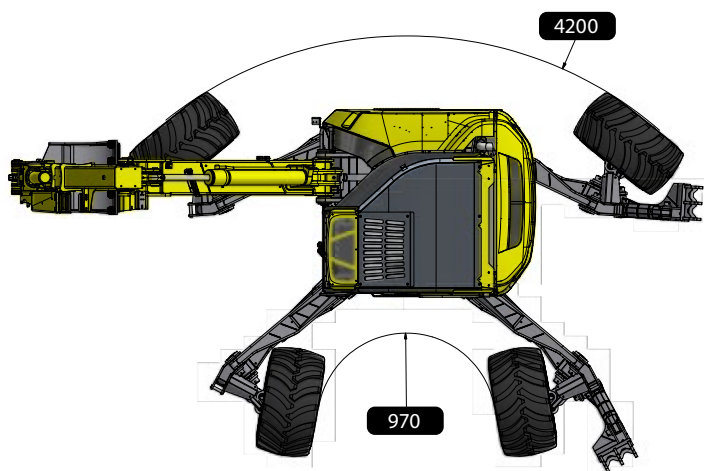
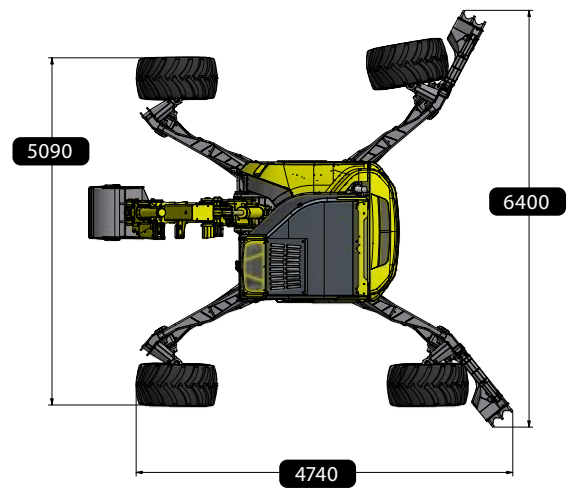
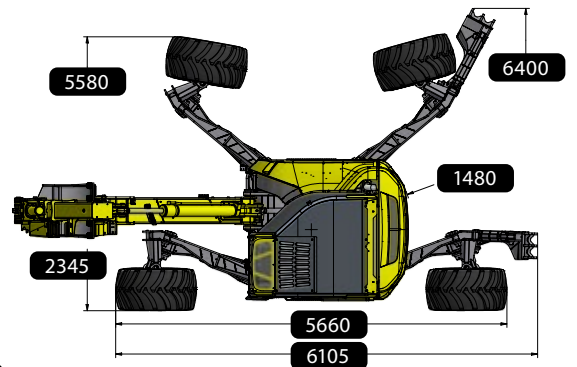
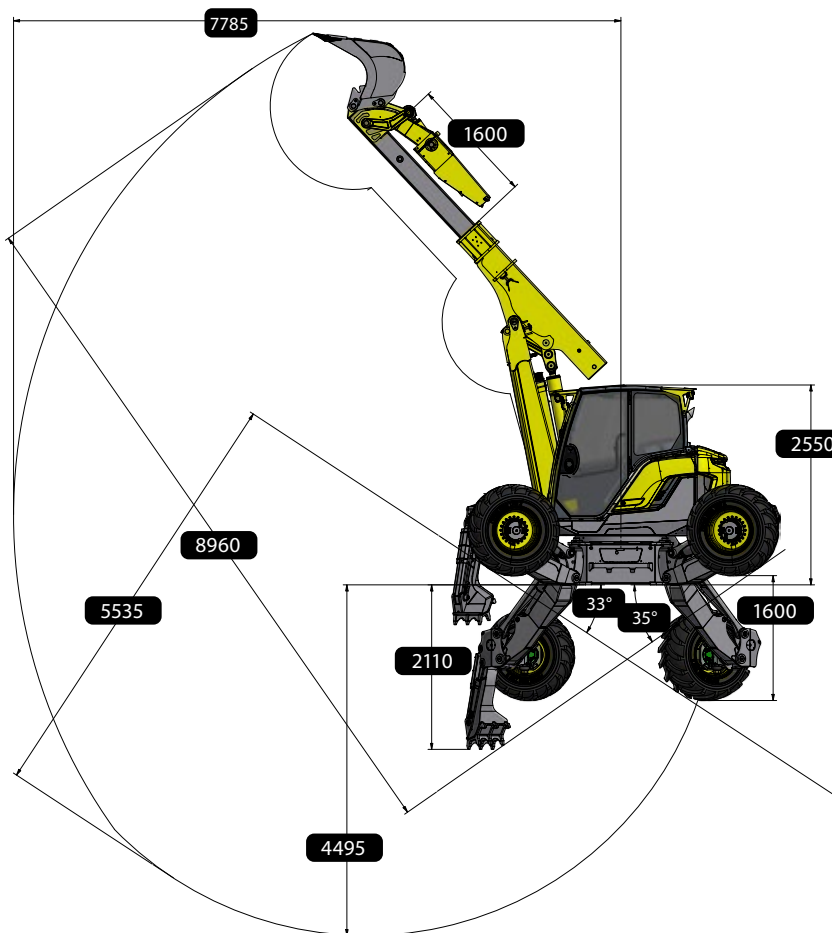
Sensor steering

Linear sensor in the steering cylinder, angle sensors on the swivel foot and in the rotary transmission provide automatic direction detection and pass the information on to I-Control.



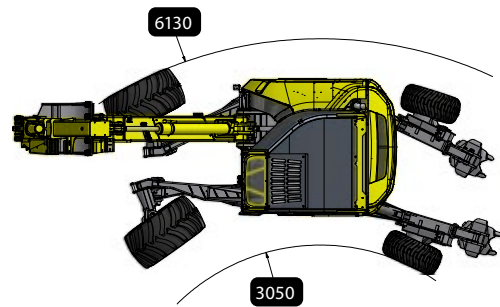
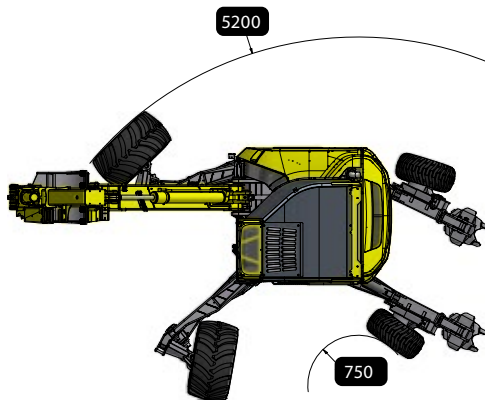
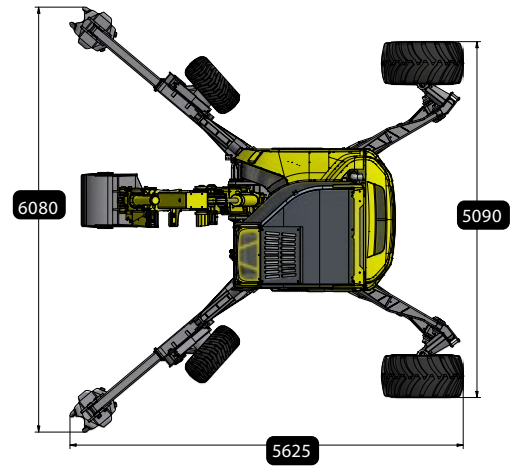
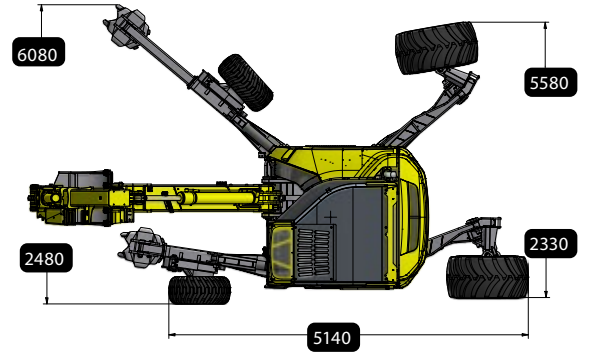
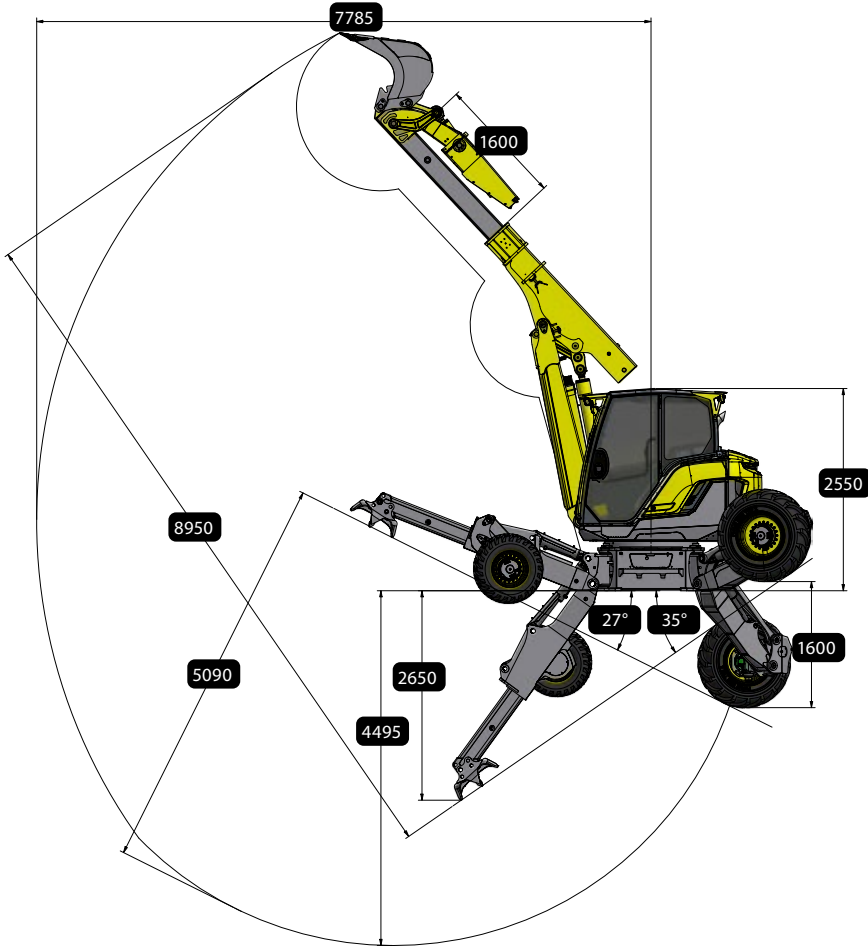
Dimensions

Menzi Muck M445x



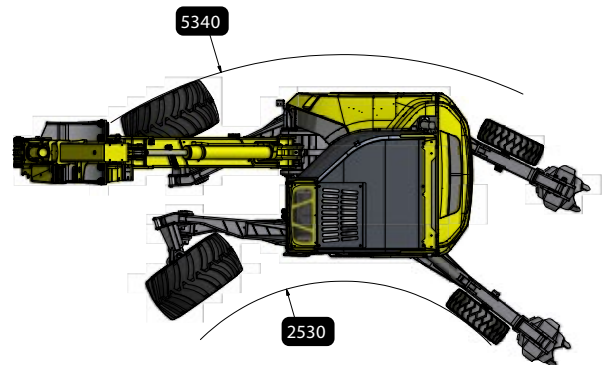
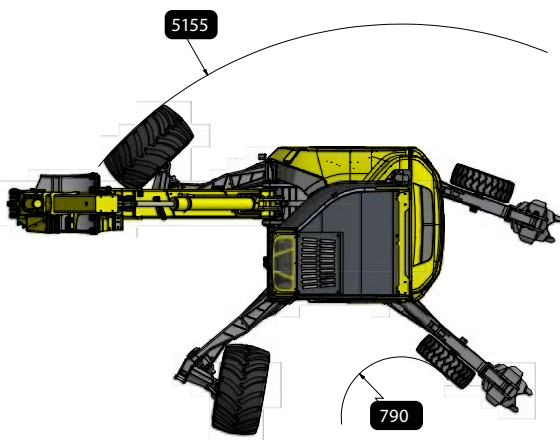
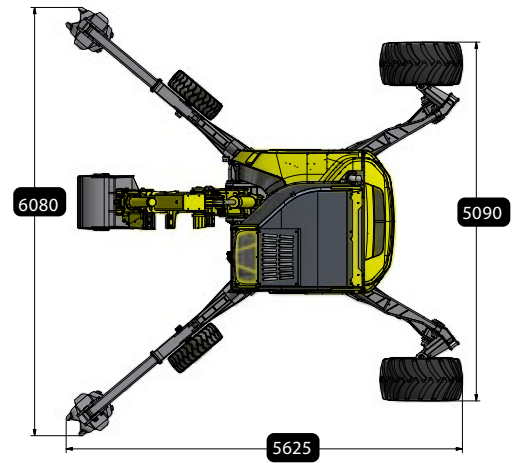
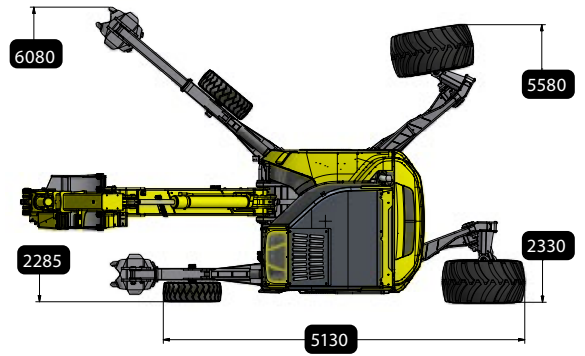
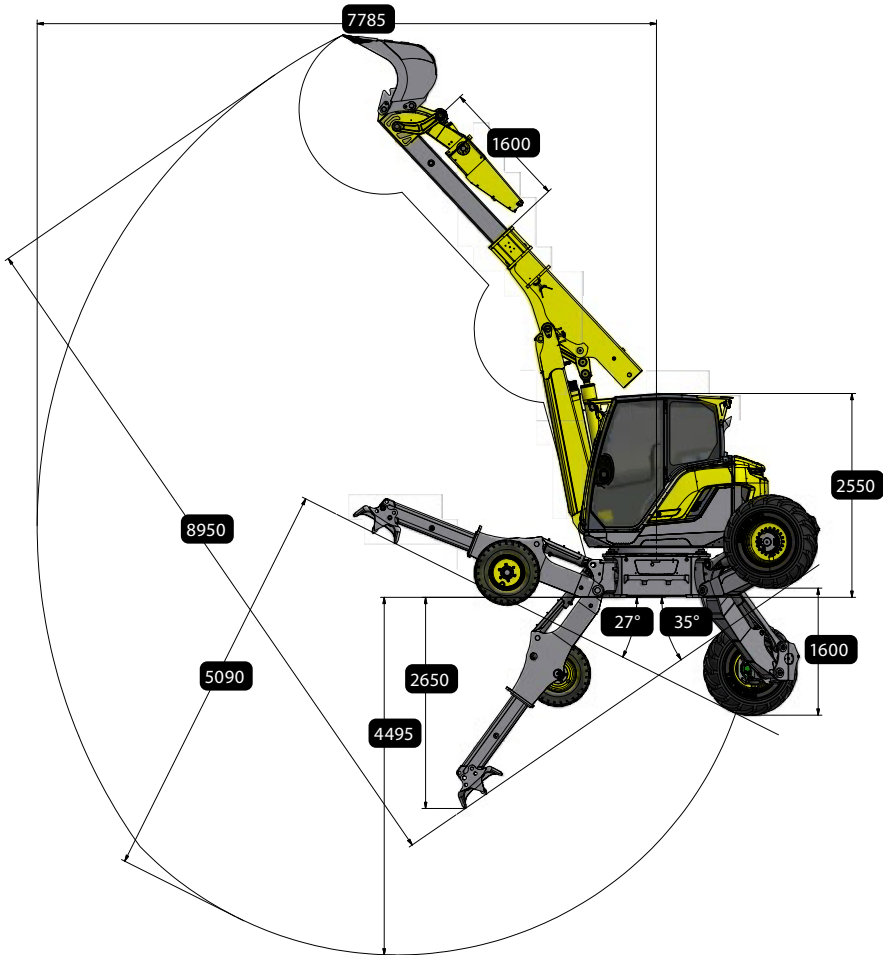
Dimensions

Menzi Muck M435x



Dimensions

Menzi Muck M425x



Dimensions in mm. Dimensions vary depending on tyres/tools.



M4 technical data, dimensions and figures

Engine

Deutz 4-cylinder diesel	TCD 3.6 L4 HP
Emissions level	EU level V/US Tier 4
Displacement	3621 cm ³
Performance according to ISO 14396	105 kW (143 HP) at 2,000 rpm
SCR catalytic converter	with AdBlue supply
Integrated diesel particulate filter	with automatic regeneration
Max. torque	550 Nm at 1,600 rpm

Travel drive

Driving speed max.	10 km/h*
Separate hydraulic pump	180 l/min, max. 420 bar
Service brake	hydrostatic
holding brake	Spring loaded accumulator

Weight in kg

M425x without tools from	10,600 kg**
M435x without tools from	11400 kg**
M445x without tools from	11500 kg**

Unrivalled power

Lifting force @ 3.0 m boom length	9,100 kg
Lifting force @ 4.5 m boom length	4750 kg
Lifting force @ 6.0 m boom length	3100 kg
Breakaway force	109 kN
Ripping force	77 kN
Telescope thrust	191 kN

Swivelling

Radial piston engine with automatic multi-disc holding brake acts directly on the internal teeth of the large-dimensioned double-row ball slewing ring.	
Swivel range	360° endless
Swivel torque	48,000 Nm
Swivel speed	up to 10 rpm
Slewing ring module 10	Ø 1,200 mm

* depending on type and tyre dimension

** depending on equipment

Hydraulic system

Working hydraulics	Rexroth LUDV
Pumps	Swash plate axial piston pumps
Workpump	260/min, 320 bar
Fan pump	50 l/min, 180 bar
Additional connections	6

Hydraulic control circuits

Adjusting the auxiliary hydraulic connections via the touch screen	
Control circuit Q1 on the arm: proportional, litres and pressure adjustable	max. 150 l/min 50 - 320 bar
Control circuit Q2 on the arm: proportional, litres and pressure adjustable (opt.)	max. 100 l/min 50 - 320 bar
Control circuit Q3 on the arm: proportional, litres and pressure adjustable (opt.)	max. 50 l/min 50 - 320 bar
Control circuit Q4 on arm (quick coupler) (opt.)	30 - 300 bar
Powerline, litres and pressure adjustable (opt.)	max. 150 l/min 50 - 350 bar
Winch connection on the chassis proportional, litres adjustable (opt.)	max. 120 l/min
Return pipe	
Leakage line (opt.)	

Filling quantities

Fuel tank	130l
Fuel tank, chassis	190l
AdBlue tank	20l
Hydraulic oil system content	200l

Tyres

Road traffic license CH and EU without special permit up to 710 mm tyre width	
Standard	W/Ø in mm
300-15 (M425x)	820 / 300
400/55-17.5 (M435x)	890 / 390
600/50-22.5 (M445x)	600 / 1170
Option	
710/40-22.5	710 / 1170

Innovative standard equipment and useful options

standard + optional o

Upper carriage

Diesel filling pump with limit switch	+
Gas spring-assisted opening of the side and tail gate	+
Integrated tool compartment	+
Additional toolbox	o
Direction recognition with automatic changeover	+
Cylinder on arm with end position damping	+
Powerline	o
Leakage line	o
Control circuit Q1 + Q2	+
Control circuit Q3 + Q4	o
Control circuit pressure adjustment Q2 + Q3	o
Return filter with optimised air separation (In to OUT)	+
Reversing fan	o
Lifting equipment (CH and EU)	o
Lift and swivel limitation (boom & swivel)	o
Lift and swivel limitation (all arm functions)	o

Cab

"Roll-Over Protection System" – DIN ISO 3471	+
FOPS protective grid roof Level II according to DIN ISO 3449 Compact	+
FOPS protective grid roof Level II according to DIN ISO 3449 Forest	o
Removable windshield OPS-tested according to ISO 8084	o
Front safety screen for forest according to ISO 21876	o
Low-vibration and low-noise cabin	+
Grammer operator's comfort seat	+
Grammer operator's comfort seat Evolution with seat climate control	o
Ergonomic joystick with Ix-Steering	+
Cab tiltable with hydr. hand pump	+
Headlight ring on the roof with up to 6 LED headlights	o
5 LED work lights	+
LED auxiliary lights on arm or cab (various versions)	o
LED swivel light	o
Protective grid on windshield (different variants)	o
Safety glass (different variants)	o
Door with sash window	o
Spacious, ergonomic cockpit	+
Reversing camera	+
Powerful heater with 8 adjustable air nozzles	+
Air conditioning	o
Engine-independent heating	o
Pollen filter	+
DAB+ radio with USB/MP3 player	+
Three-point safety belt	o

Wiping and windscreen washer	+
Telematik tracking system	+
LCD Display 12.1" touchscreen	+
USB charging station	+
Inductive charging station	+
Central electrics with LED monitoring of the fuses	+

Generation X chassis

Optimally protected components	+
Mountain stabilizers, front	o
Mountain stabilisers, rear (M445x)	o
Hydraulic wheel height adjustment (M435x)	+
Winch attachment possible at front or rear	+
Mooring winch preparation	o
Remote control for winch	o
Electric winch collision protection	+
Automatic parking brake	+
Differential lock	+
Linear displacement sensors in the steering cylinder	+
Active angle sensors	+
Electric chain collision protection	+
Hydraulic freewheel (M425x)	o
Chassis cylinder with check valves	+

Other special features

Vacuum pump for hydraulic system	o
Automatic idling	o
Road traffic license (CH and DE)	o
Automatic central lubrication (whole machine or upper carriage only)	o
Central lubrication cartridge filling	o
Biodegradable hydraulic oil	o
Hydraulic affluent filter	o
Forest version	o
Drilling equipment	o
Municipal maintenance equipment	o
Special paintwork	o
Low temperature package	o
Start & Stop on the joystick	+
Automatic idling	o

Find us!

Menzi Muck AG
Feffetstrasse 14
9464 Rüthi
Switzerland
info@menzimuck.com
071 727 12 12



Technische Änderungen vorbehalten .

Follow us!



www.menzimuck.com



[menzimuckcom](https://www.instagram.com/menzimuckcom)



[menzimuckcom](https://www.facebook.com/menzimuckcom)



[Menzi Muck AG](https://www.linkedin.com/company/menzi-muck-ag)



[menzimuckcom](https://www.youtube.com/menzimuckcom)

menzi
muck

Menzi Muck **M525x**

Menzi Muck **M535x**

Menzi Muck **M545x**

M5

Generation **X**



menzi
muck

Menzi Muck, the technologic leader. Details that make us number one.

Menzi Boom



Patented, tried and tested as well as unrivalled boom with a maximum lifting force of 9800 kg and unique kinematics. Boom cylinder positioned horizontally in the centre section. Rules out collisions at the boom cylinder.

Wide-angle kinematics with power booster



Menzi power booster provides maximum output over the entire working range.

Swivelling with large slewing ring



Maximum swivelling force across the entire engine speed range featuring maintenance-free slewing motor.

Chassis



Innovative, patented chassis concept with ideal kinematics while maintaining ideal power ratios. P-Vation for horizontal and vertical parallel adjustment of the wheels. Vx-Drive for infinitely variable Power drive up to 15 km/h with maximum torque across the entire adjustment range.

Secure hose system



Hydraulic hoses are protected at the chassis and installed at the boom within the operator's field of vision.

Up to 800 mm wide tyres available



For special applications and situations.

Mountain stabilizers (optional)



Installed at the rear and/or front to guarantee safe working conditions in extreme terrain.

SWISSPOWER 

Deutz diesel engine


Powerful, efficient and reliable 4-cylinder diesel engine complying with EU emission standards IIIA, V. Deutz system: selective, catalytic reduction in combination with active diesel particulate filter. Environmental protection while maintaining the output!

APM - up to 30% fuel savings

The APM controller (Anticipating Power Management) guarantees fast and harmonious interplay between engine and hydraulics.

Powerline

Separate pump to boost attachments' efficiency. Individual pressure and flow adaptations for a large number of tools.

- 
- +** **Panorama cockpit**
Maximum, all-round vision and optimised ergonomics for fatigue-free working.
 - +** **Tool management**
Definition of comprehensive parameters on the display for up to 15 attachments.
 - +** **Personalised working environment**
Intuitive navigation and individually adjustable parameters for safe and efficient operation.
 - +** **Steel structure**
Ideal pivot point positioning reduces forces applicable to the steel structure. Largely dimensioned bearings and solid material thicknesses increase safety levels in the most challenging applications.
 - +** **Hydraulic cable winch**
Interface for installation of the cable winch at the front and rear including optimum cable guide.

Panorama cockpit

Unobstructed view of the entire working environment and chassis for safety and full control in any situation. Low-vibration, noise-insulated cab for a perfect feeling of space and relaxed work.

Comfort

Ergonomic joystick with proportional rollers, hand rest, adjustable armrests and foot pedals, air-suspension comfort operator's seat, powerful heating with 7 individual nozzles, air conditioning, DAB+ radio and many more features for maximum comfort.

Dashboard with LCD

Clearly arranged dials with integrated colour display. Separate display and tumbler switch with LED lighting.

Safety

ROPS as per DIN ISO 3471 and FOPS as per DIN ISO 3449, four-point seat belt, reversing camera, LED headlights, different protective grid variants and many more features for maximum safety.

Remote machine monitoring

Comprehensive service tool to remotely record relevant machine data.



menzi
muck



The panorama cockpit. Focusing on the operator.



P-VATION by Menzi Muck x-Generation. Revolutionary, symmetric stabilisation.

Outstanding kinematics

Replacement of the tried-and-tested P-Matik system by the completely new, automatic P-Vation support development at the front and rear. Sophisticated arrangement of pivot points on the chassis for horizontal and vertical parallel adjustment of all wheels. Maximum adjustment range and steering angle to boost safety and application options.

Unrivalled, incredible fording depth

Maximum ground clearance guarantees a fording depth of 2200 mm for municipal use and deployments in water.

Unmatched gradients

P-Vation support for gradients other machines can't handle. Unparalleled proximity to slopes and maximum width adjustment of the wheels of over 6000mm for genuine stability. Working on slopes (moving across the slope) on even steeper dams and embankments possible.

Smooth running and simplified steering

- + Linear travel sensors in the cylinder
- + Angle sensors
- + Automatic direction sensors
- + Central wheel bearing suspension

Perfected mountain stabilizers

For working in very steep terrain, installation of solid mountain stabilizers at the front and rear possible. Ideal design guarantees perfect anchor point to the slope angle.

Chain mode

Collision protection thanks to electrical actuation of forestry and snow chain mode.

Different steering modes

- Front-axle steering
- Rear-axle steering
- 4-wheel steering
- Crab steering



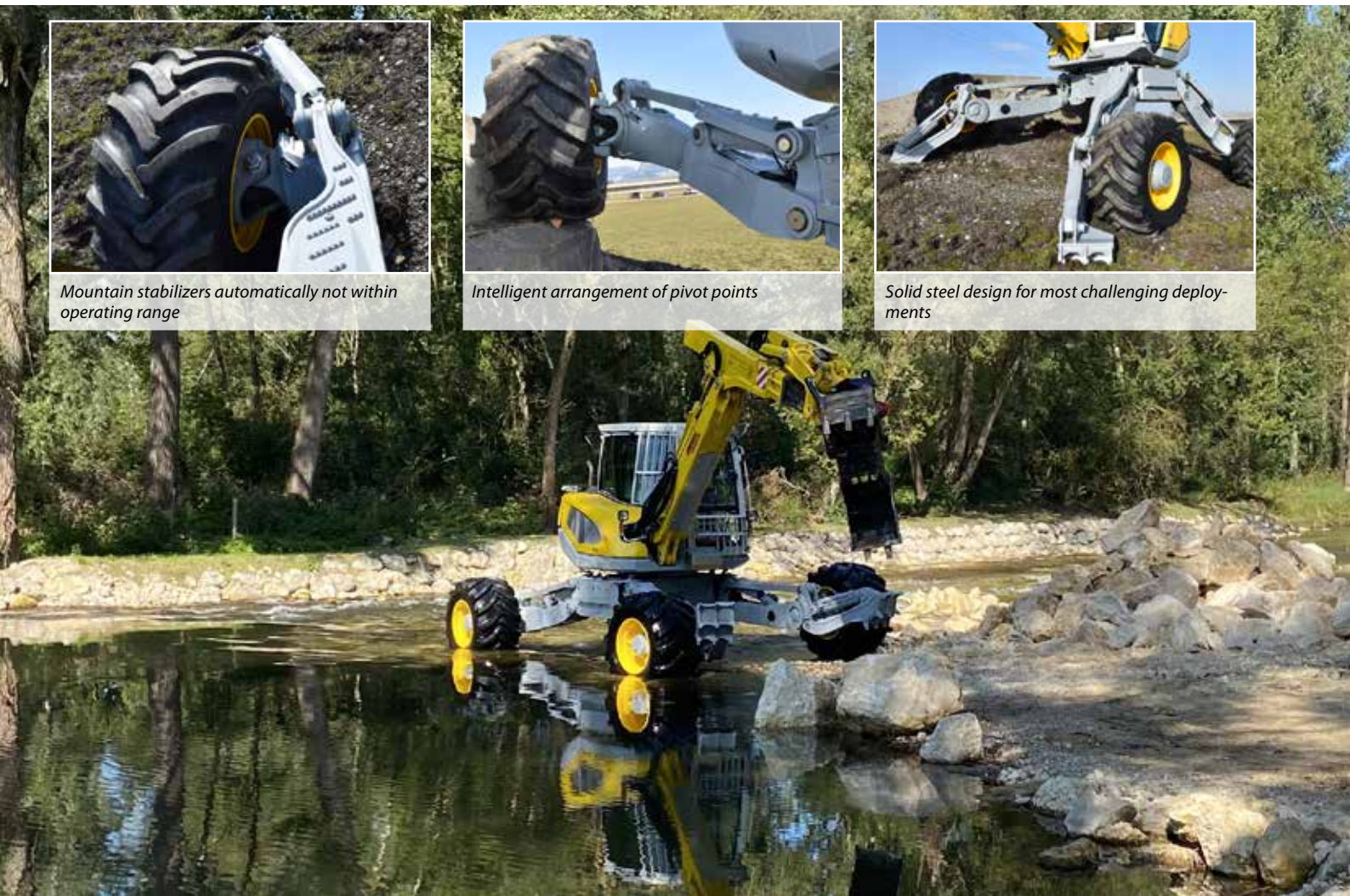
Mountain stabilizers automatically not within operating range



Intelligent arrangement of pivot points



Solid steel design for most challenging deployments



Vx-DRIVE by Menzi Muck. Intelligent drive technology.

Infinitely variable

Infinitely variable power drive up to 15 km/h at maximum torque across the entire adjustment range and every driving phase. Synchronous, efficient engine speed and drive pump actuation using the driving pedal.

Protects substrate and tyres

Automatic wheel speed adaptation thanks to innovative steering angle measurement to protect the ground. Improved traction thanks to universal steering angle of all 4 wheels to protect the ground while driving.

Manual differential lock for off-road mode

Self-locking differential lock on slippery or soft ground for maximum traction and strong traction.

Tyres up to 800 mm

In special applications and situations, wide tyres up to 800 mm boost safety and application options.

20% more traction

Quicker and unrestricted uphill driving thanks to ample hub motor adjustment range.



Technical data, dimensions and values of generation x.

Engine

Deutz 4-cylinder diesel	TCD 4.1 L4
Emission standards	IIIA / V
Engine capacity	4038 cm ³ /246 cu in
Output as per ISO 3046	115 kW (156 hp) at 2000 rpm
SCR catalytic converter	with AdBlue supply (Stage / V)
Integrated diesel particulate filter	with automatic regeneration (Stage / V)

Vx-Drive traction drive

Infinitely adjustable speed max.	to 15 km/h
Separate hydraulic pump	max. 210 l/min., 420 bar
Driving brake	Hydrostatic
Parking brake	Spring loaded accumulator

Weight in kg

M525x excluding tools from	12400 kg
M535x excluding tools from	13000 kg
M545x excluding tools from	13500 kg

Unrivalled forces

Lifting force @ 3.0 m boom length	9500 kg
Lifting force @ 4.5 m boom length	6400 kg
Lifting force @ 6.0 m boom length	4300 kg
Lifting capacity 3.0m	93.20 kN
Lifting capacity 4.5m	62.78 kN
Lifting capacity 6.0m	42.18 kN
Breakaway force	109 kN
Shear force	74 kN
Thrust, telescope	191 kN

Slewing

A radial piston motor with automatic front multi-disc brake acts on the internal gears of the large-scale double-row slewing ring.	
Slewing range	360° endless
Slewing torque	52000 Nm
Slewing speed	Up to 10 rpm
Slewing ring module 10	Ø 1200 mm

Hydraulics

Working hydraulics	Rexroth LUDV load sensing
Pumps	Swash-plate axial piston pumps
Working pump	max. 290 l/min at 320 bar
Fan pump	max. 52 l/min at 200 bar
Additional connections	6

Hydraulic control circuits

Hydraulic auxiliary connections are adjusted using the colour display	
Control circuit 1 on boom: proportional, litres adjustable	Max. 200 l/min
Control circuit 2 on boom: proportional, litres adjustable	Max. 100 l/min
Control circuit 3 on boom (digital, litres adjustable)	Max. 50 l/min
Control circuit 4 on boom (quick changer)	30 - 300 bar
Powerline (digital, litres and pressure adjustable)	max. 220 l/min / 350 bar
Cable winch connection on chassis (proportional, litres adjustable)	max. 120 l/min
Return line (on boom)	
Leak oil line	

Filling quantities

Fuel tank	180 litres
Spare tank in chassis	240 litres
AdBlue tank	20 litres
Hydraulic oil system capacity	220 litres

Tyres

CH and EU road traffic licence without special permit up to 710 mm tyre width	
Standard	B/Ø in mm
600/50-22.5 (M545x)	600/1170
Option	
600/55-23.0	570/1370
600/55-26.5	600/1340
710/45-26.5	710/1340
800/40-26.5	800/1340

Innovative standard equipment and useful options.

serial + optional o

Upper carriage

Diesel input pump including limit stop	+
Gas shock supports opening the side and rear panels	+
Integrated tool compartment	+
Additional tool crate	o
Steel parts on upper structure as ram protection	+
Identifies direction of travel and automatically switches over	+

Cab

“Roll-Over-Protection-System” – ROPS as per DIN ISO 3471	+
FOPS protective grid roof as per DIN ISO 3449	o
Demountable windshield OPS-proofed DIN ISO 8084	o
Low levels of vibrations and noise in cab	+
Grammer comfort operator’s seat	+
Grammer Evolution comfort operator’s seat with seat ventilation	o
Ergonomic joystick	+
Cab tilts with hydraulic hand pump	+
Headlight crown on the roof with up to 10 LED headlights	o
5 LED headlights	+
One or two LED additional headlights on boom	o
LED Turning light	o
Protective grid (different variants)	o
Safety glass panels (different variants)	o
Door with sliding window	o
Spacious, ergonomic cockpit	+
Rear-view camera	+
Powerful heating with 7 adjustable air nozzles	+
Air-conditioning unit	o
Auxiliary heating	o
Pollen filter	+
DAB+ radio with CD/USB/MP3 player	+
Four-point seat belt	o
Windscreen washer and wiper system	+
Immobilizer	o
Trackunit remote diagnostics	+
LCD Display	+
USB charger station	o
Depth temperature package	o

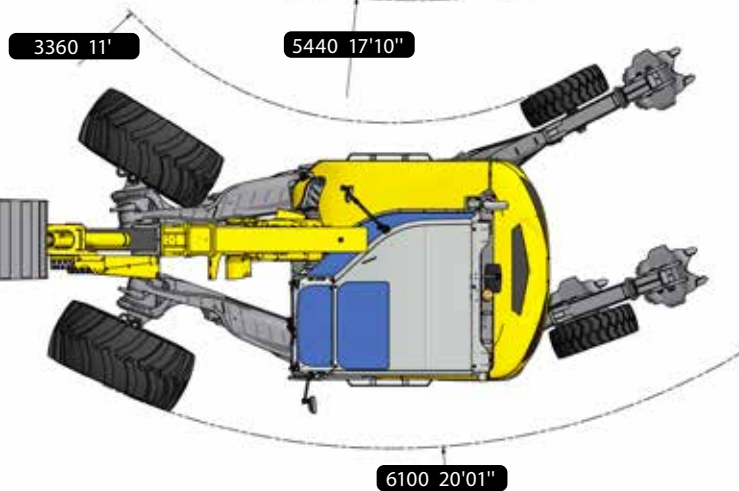
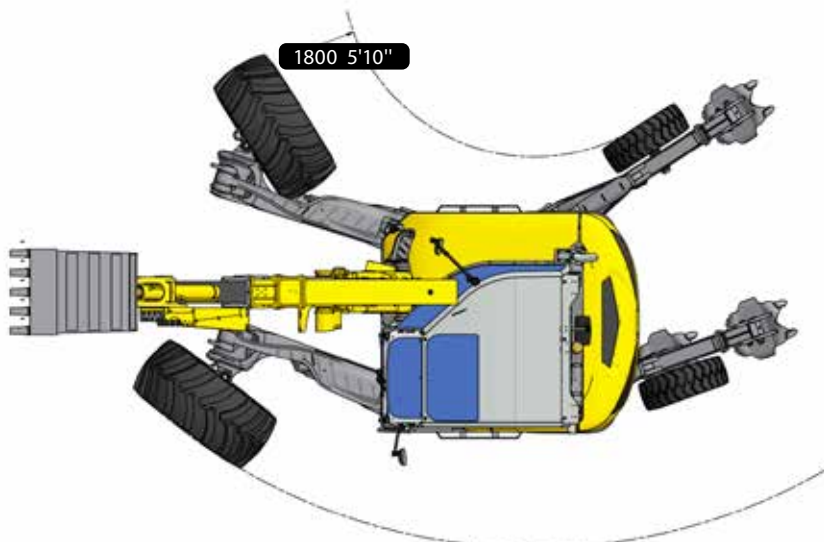
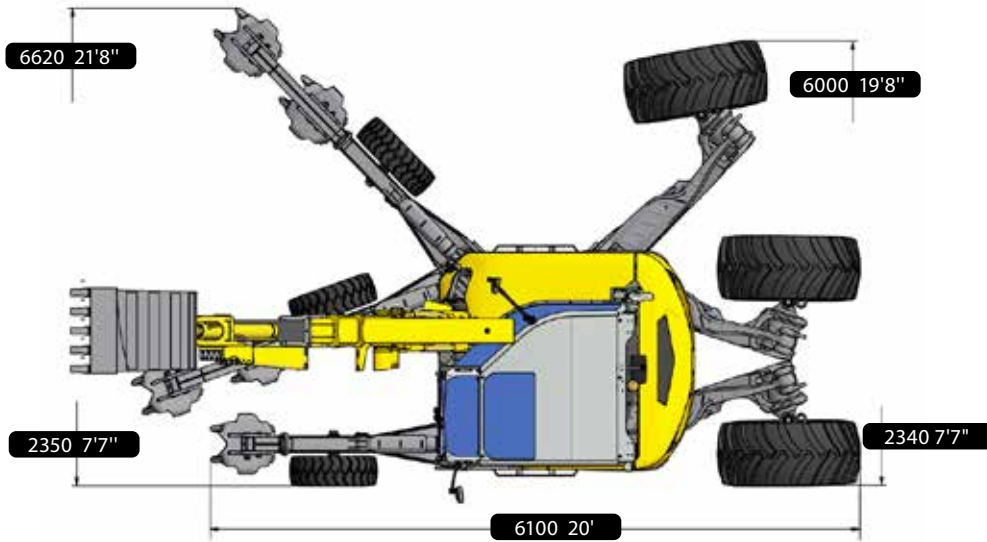
Generation x chassis

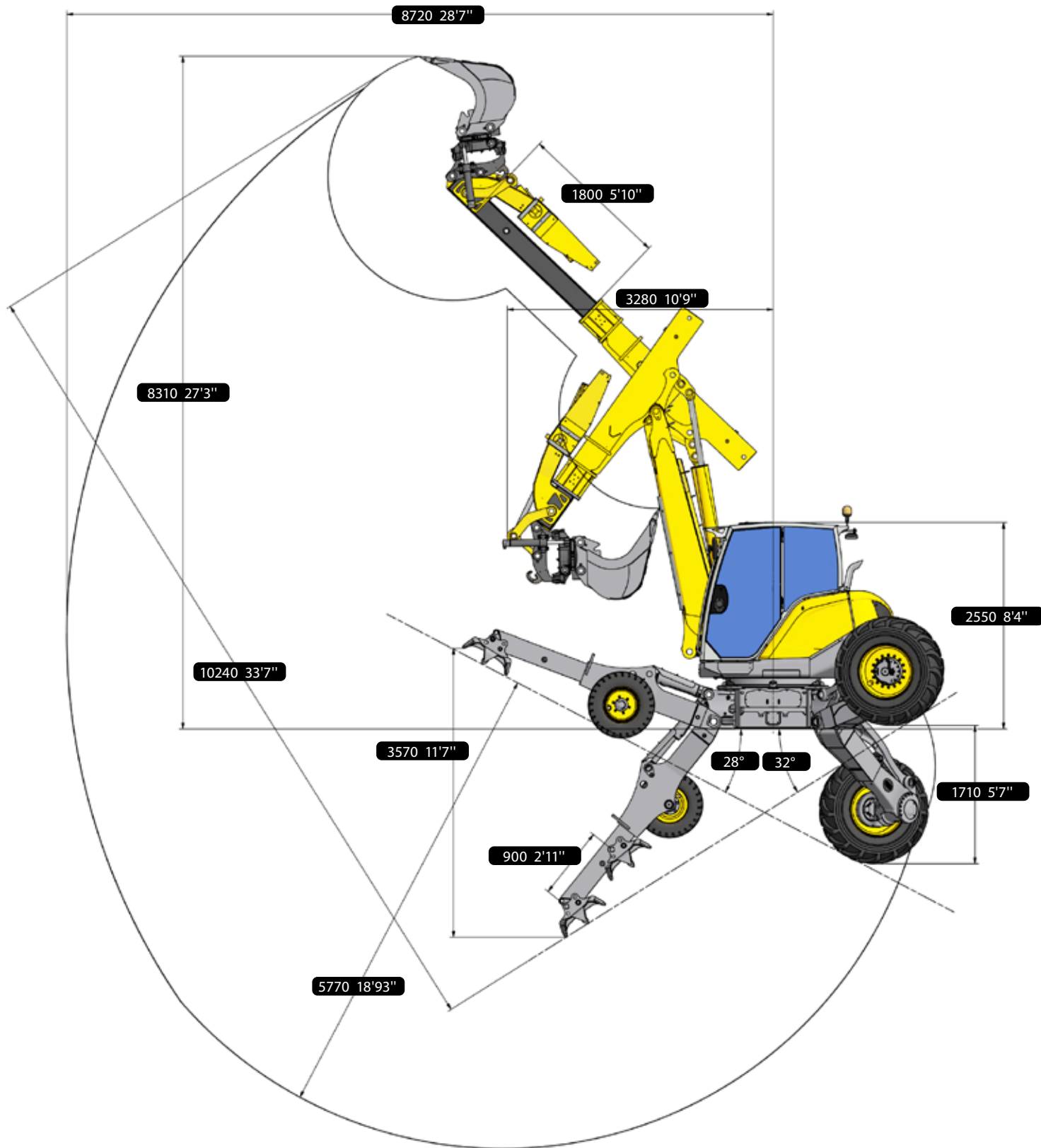
Ideally protected components	+
Mountain stabilizers at the front	o
Mountain stabilizers at the rear (M545x)	o
Hydraulic wheel height adjustment (M535x)	+
Cable winch can be installed at the front or rear	+
Vx-Drive	+
Wheel speed adaptation	+
Swing axle (M545x)	o
Automatic parking brake	+
Max. engine speed restriction/resolution, driving pedal	+
Substrate protector	+
Differential lock	+
Linear travel sensors in the steering cylinder	+
Active angle sensors	+
Electric chain collision protection	+

Other specialties

Cylinders on chassis with check valves	+
Cylinders on boom with end position damping	+
Leak oil line	o
Reversible fan	o
Cable winch connection	o
1st + 2nd control circuit	+
3rd + 4th control circuit	o
Powerline	o
Automatic idling	o
Equipment for lifting gear (CH and EU)	o
Electric height limiter	o
Road traffic licence (CH and DE)	o
Automatic central lubrication (entire machine or upper structure only)	o
Biodegradable hydraulic oil	o
Hydraulic bypass filter	o
Forestry version	o
Remote control for forestry cable winch	o
Drilling equipment	o
Track equipment	o
Paint finish to specification	o
Stroke and swivel limiter	o
Vacuum pump	o

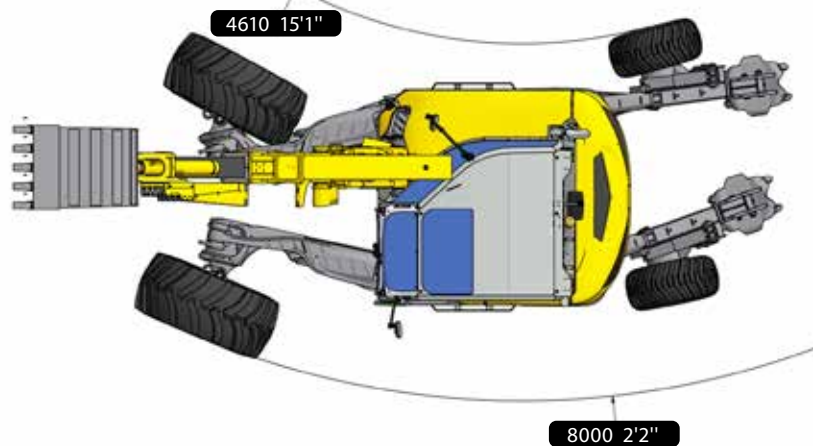
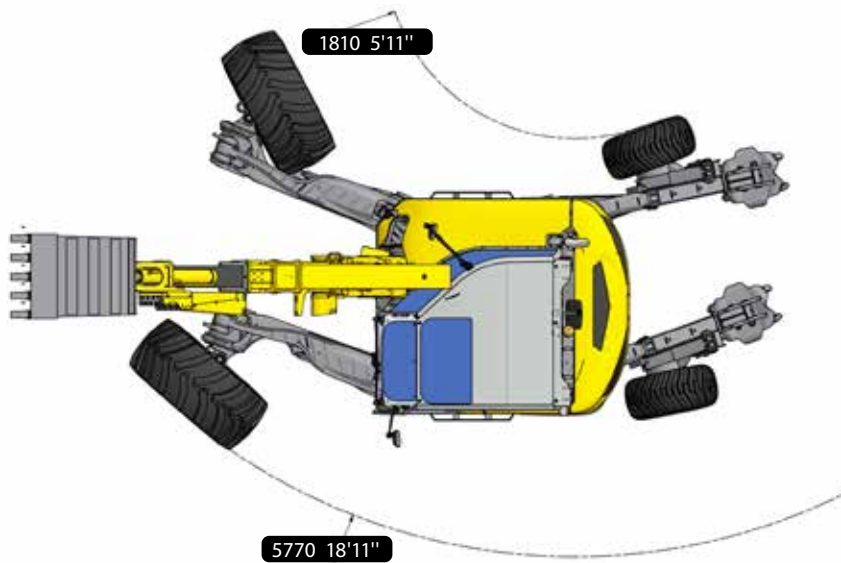
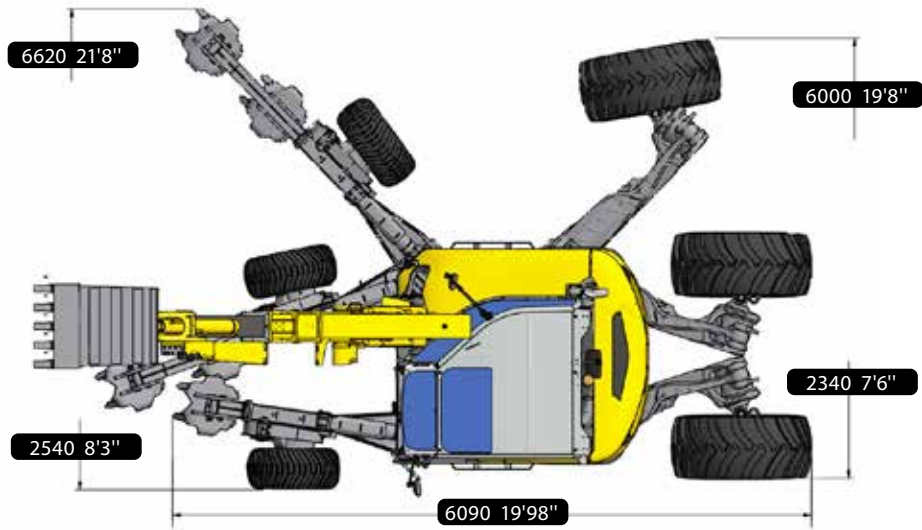
The Menzi Muck M525x. Dimensions.

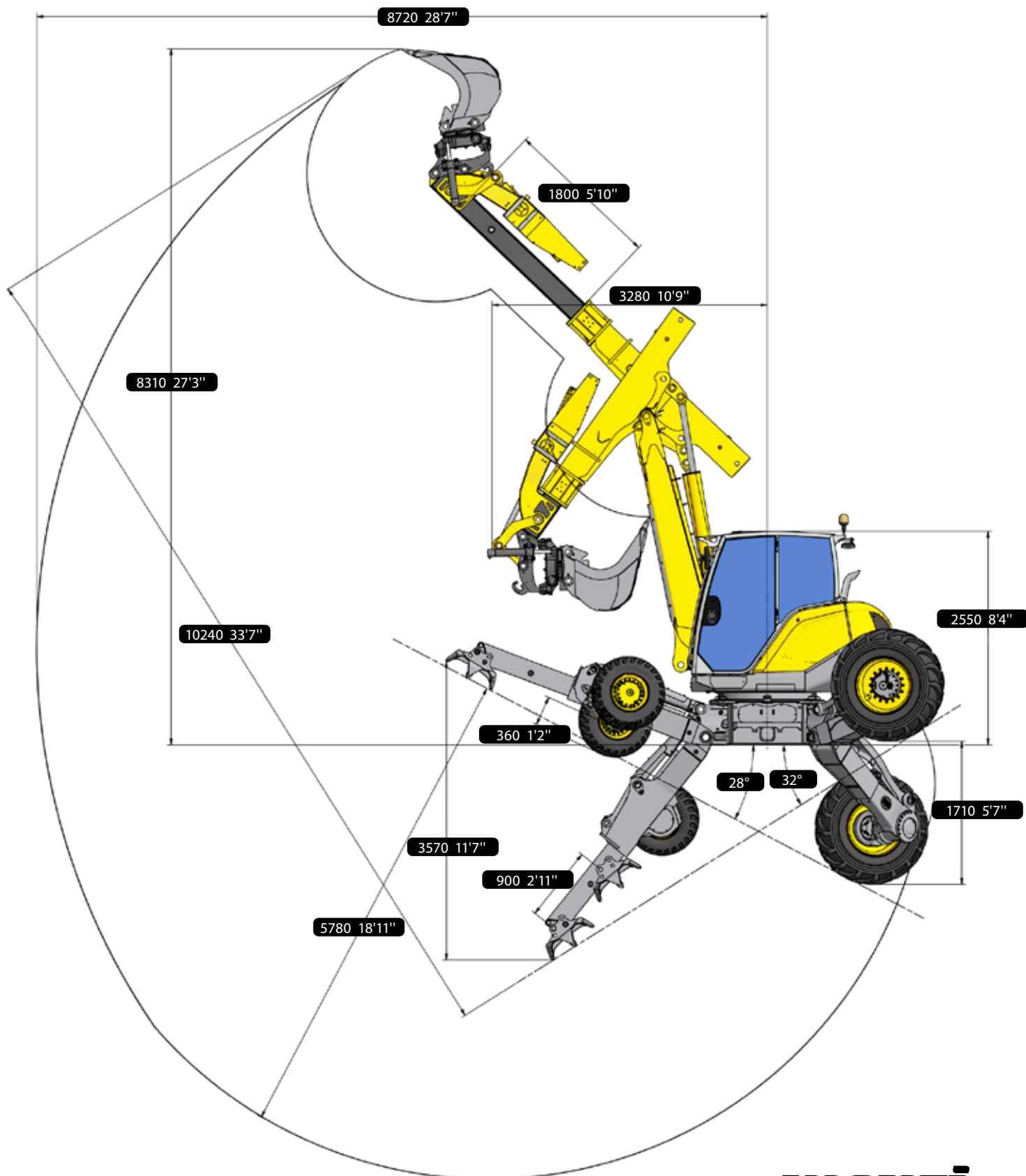




Dimensions with tiltrotator in mm/inch. Technical data vary upon tyre/tool.

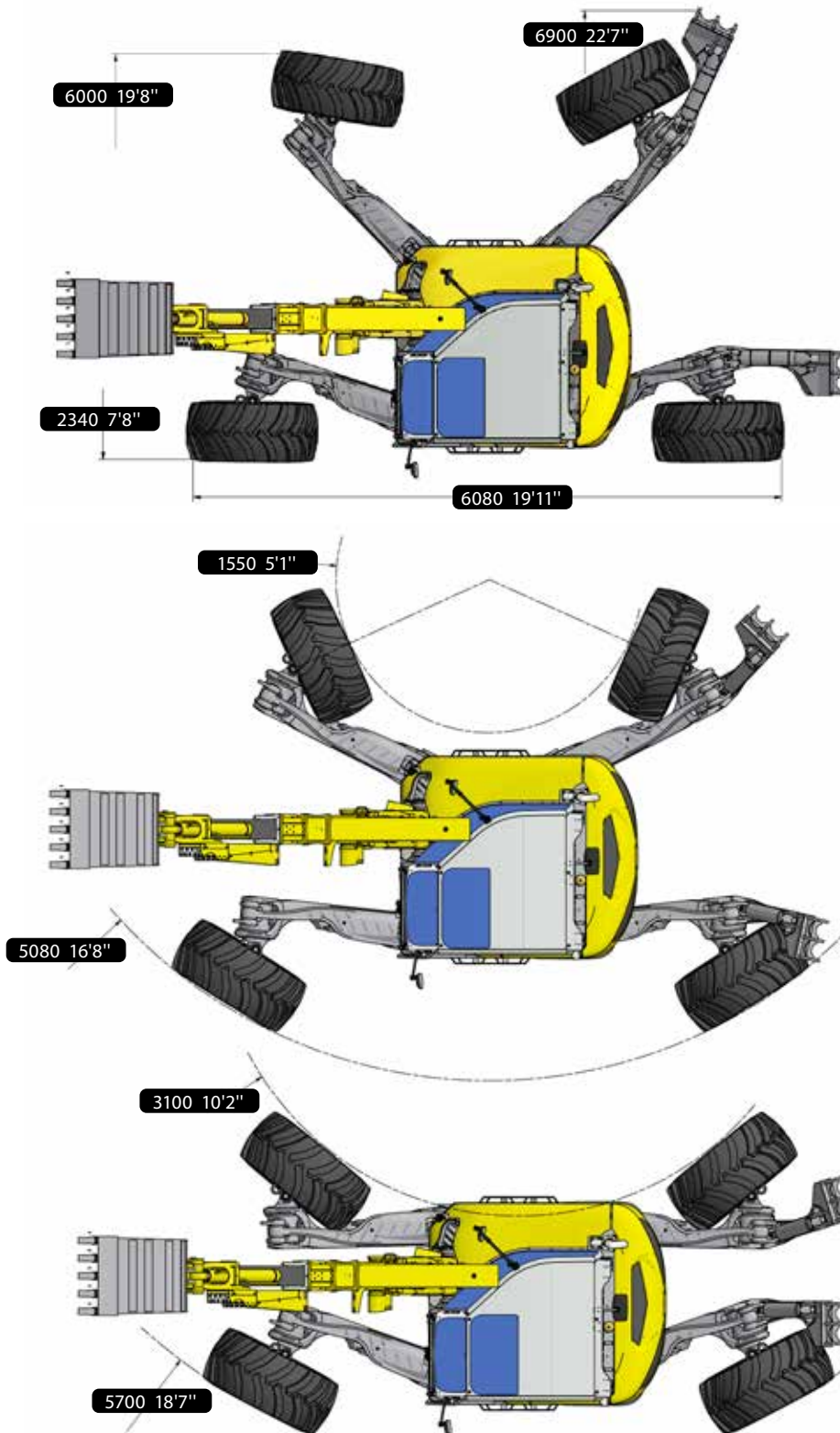
The Menzi Muck M535x. Dimensions.

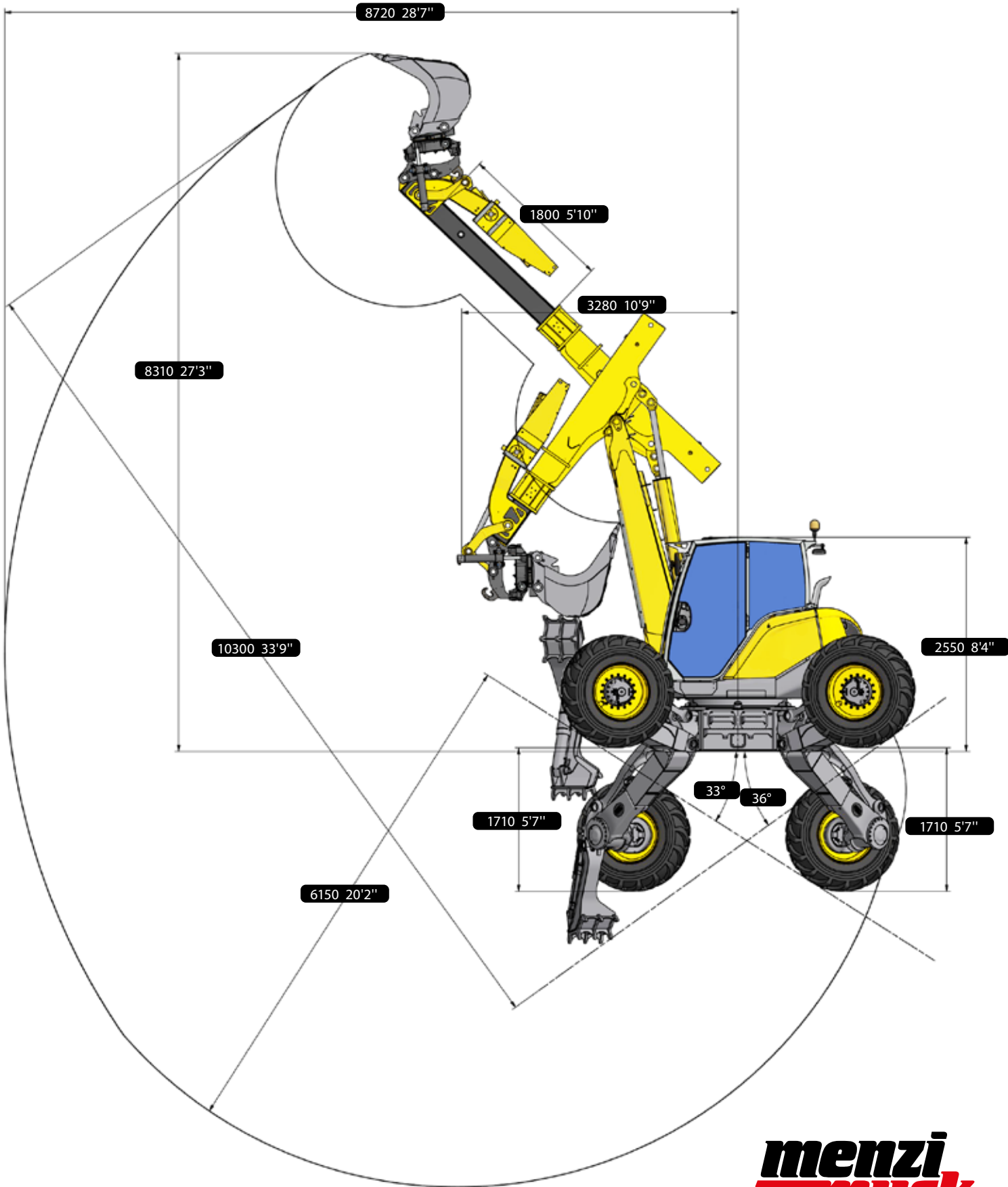




Dimensions with tiltrotator in mm/inch. Technical data vary upon tyre/tool.

The Menzi Muck M545x. Dimensions.





Dimensions with tiltrotator in mm/inch. Technical data vary upon tyre/tool.

Follow us.



www.menzimuck.com



[menzimuckcom](https://www.instagram.com/menzimuckcom)



[menzimuckcom](https://www.facebook.com/menzimuckcom)



[Menzi Muck AG](https://www.linkedin.com/company/menzi-muck-ag)



[menzimuckcom](https://www.youtube.com/menzimuckcom)

Technical data subject to change / 1022