

Bohrkran BK 726

Drilling Crane



MORATH®

areas of application OF

Range of application IN

injection anchor drilling
Injection anchor drillings

overburden drilling
Overburden drillings

Exploratory and rotary drilling
Exploratory and rotary drillings

Anchor and blast hole drilling
Anchor and blast hole drillings

➔ Self-propelled drilling units drilling crane

➔ Mobile drilling rigs ➔ Drilling crane

The model impresses with the following features:

- Ideal for hillside construction sites with combined crane and drilling applications at great heights
- Separate radio remote control for drill and carrier
- Light and compact drill rigs to choose from (BT235, BA2500)
- Combination with a large number of different attachments
- High cost-effectiveness due to the universal application options for crane, drilling and shotcrete work
- Complete device from a single source including CE certification
- Fulfills safety requirements according to drill rig standard EN16228

The model stands out with the following characteristics:

- Ideal for hillside construction sites with combined crane and drilling applications with high altitude
- Separate radio remote control for drilling attachment and carrier
- Light and compact drilling mast available (BT235, BA2500)
- Combination with a high amount of different attachments
- High efficiency due to the universal application possibilities for lifting-, drilling- and shotcreting application
- Complete unit from the one source with CE-declaration of conformity
- Meets the safety requirements for drilling and foundation equipment EN16228



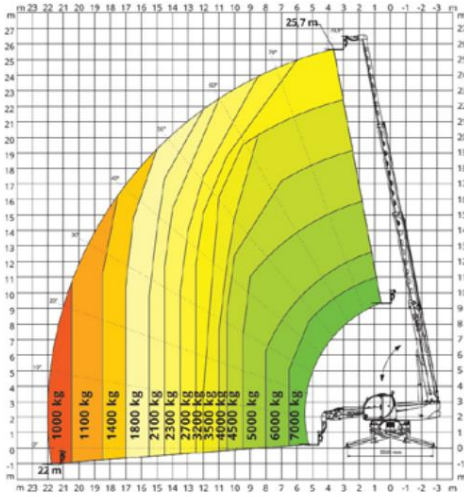
Bohrkran BK 726

Drilling Crane

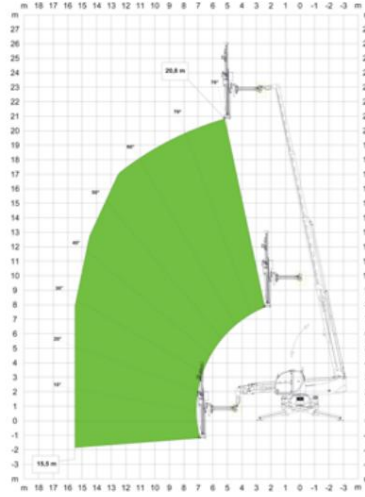
Technical data

Technical data

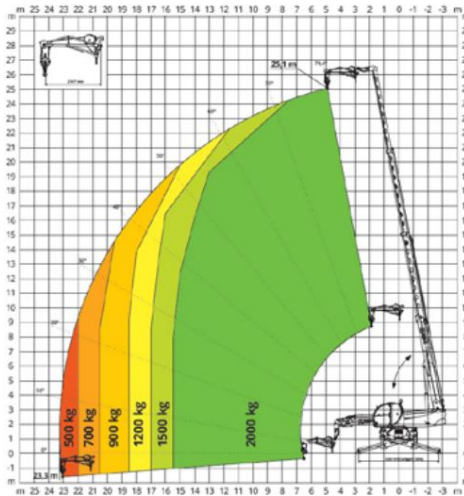
Palettengabel 8 t // Fork carriage 8 t



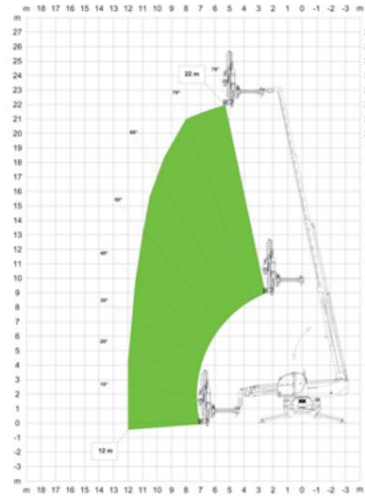
Anbaubohreinheit BT235 // Drilling attachment BT235



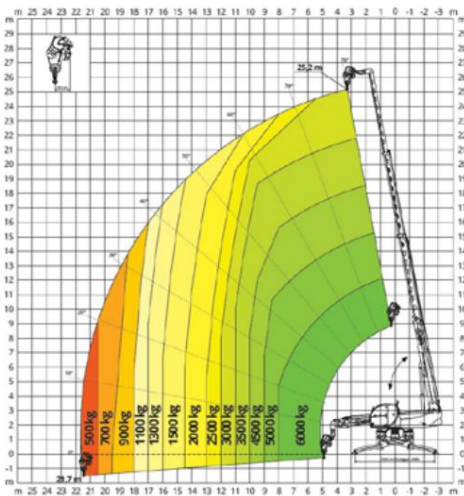
Boom with winch 2 t // JIB with winch 2 t



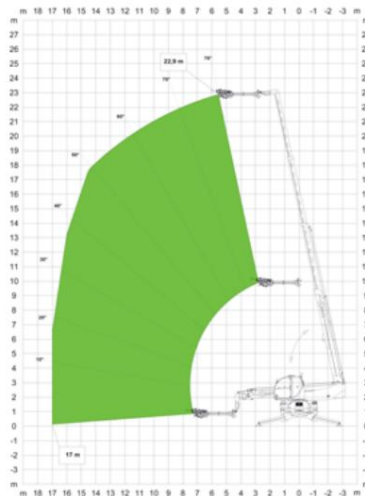
Anbaubohreinheit BA2500 // Drilling attachment BA2500



Winch 6 t // Winch 6 t



Spritzbeton-Manipulator // Shotcrete manipulator



Subject to errors and changes. Subject to errors and changes.

Drilling Crane

Technical data

Technical data

Motor //Engine		
Turbodieselmotor //Turbocharger diesel	TAD 582 VE	
Emission regulations	EU Stage 5 / US EPA Tier 4	
Number of cylinders	4	
power //power	160 kW	
RPM //Speed	2.300 U/min rpm	
Displacement //Capacity	5.130 cc	
Dieseltankvolumen //Fuel tank capacity	270 l	
AdBlue Tank volume //AdBlue tank capacity	40 l	
Batteriespannung //Battery voltage	24 V	
Hydraulikanlage (Load Sensing) //Hydraulic system (load sensing)		
Delivery capacity P1	138 l/min	
Max. Systemdruck //Max. operating pressure	350 bar	
Hydrauliktankvolumen //Hydraulic tank capacity	195 l	
Traction drive //Drive train		
Typ //type	hydrostatic	
Max. Systemdruck //Max. operating pressure	480 bar	
Driving speed // Crane speed	20 km/h	
Max. pulling force //Max. attractive force	95 kN	
Tire size	445/65 R22,5	
Wheelbase //Wheel base	3.300 mm	
Spur //Track	2.060 mm	
Wenderadius (mit Palettengabel) //Turning radius (with fork carriage)	6.400 mm	
Bohrlafette //Drilling mast		
carriage; with oil motor drive //mast; with oil engine drive	BT235	BA2500
feed force //Feed force	15.000 N	20.800 N
// Retraction force	15.000 N	28.050 N
feed length; carriage //Feed length; mast	3.500 mm	3.500 mm
Empfohlener Bohrantrieb //Recommended drilling drive		
Hydraulikhammer //Hydraulic hammer	HB70-GD70 HF41; HF57	HB100 - GD100/M2 HB100 - GD150
Rotary motor //Rotary head	HD25; HD60	HD60
Overburden drill drive //Overburden head	-	HD52S

Technical data without consideration of efficiency. Subject to errors and changes.

Technical data without consideration of efficiency. Subject to errors and changes.

Bohrkran BK 726

Drilling Crane

Accessories

Accessories

- Hydraulic breakers

- Hydraulic hammers

- Rotary motors

- Rotary heads

- External Power Station

- External power pack

- Various attachments

- Different attachments

- FFS standard (radio remote control drill)

- FFS-Standard (Radio remote control of drilling rig)

- Radio remote control for carrier

- (incl. driving, steering and support function)

- Radio remote control for carrier

- (incl. drive, steering and support function)

- Trailer hitch

- Towing hitch

- Special paint

- Special paint

Technical data

Technical data

Dimensions //Dimensions	
A	9.030 mm
A1	2.900 mm
A2	7.700 mm
A4	6.500 mm
A5	7.830 mm
A6	5.800 mm
B	2.540 mm
B1	6.000 mm
c	3.250 mm
C1	3.550 mm
E1	3.240 mm
I1	11°
I2	113°
J1	6.400 mm
Carrier* //Crane*	21.000 kg

* Without attachment // * Without attachment

Technical data without consideration of efficiency. Subject to errors and changes.

Technical data without consideration of efficiency. Subject to errors and changes.

