



tire roller

Compliant with 2014 exhaust gas regulations Compliant with safety standards for road transportation vehicles in 2014

Equipped engine DPF Muffler integrated γ No urea solution required γ

Powered by mode ECO

Reduced dB5 from ultra-low noise standard value γ

Improved maintainability (soot

accumulation display (automatic regeneration DPF)

γ Equipped with a warning monitor with

sound γ Equipped with an engine failure diagnosis device γ



Specified special motor vehicle
Year 2014 exhaust gas standard
compliant vehicle



Ultra-low noise
construction machinery



. For detailed product information, please visit our website.

jp.co.sakainet.www

Machine Translated by Google


Installed engine (*) DPF with integrated muffler

- Engine response by accelerator pedal, which is a feature of DPF-equipped vehicles
- Not only on flat ground, but also in a wide range of places such as highlands and slopes.
- Enables light start
- Diesel particulate filter: DPF*






Equipped with warning monitor with voice

- Automatically display the set information on the monitor

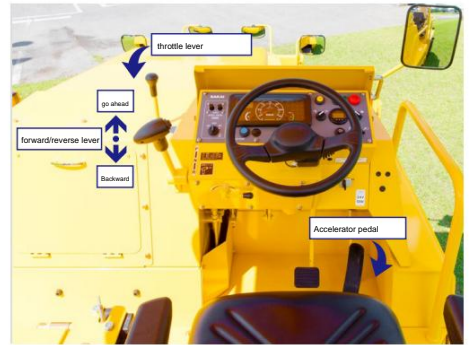


Constant display: battery voltage

| | |
|--|--|
|  | : DPF regeneration blinking display |
|  | : DPF regeneration request Sound warning/buzzer, flashing display |
|  | : Overrun warning Buzzer warning, flashing display |

system accelerator work 2

- Not only constant speed rolling work with accelerator pedal and throttle lever
- You can work comfortably even in a special site.



(Front wheel (liquid scattering prevention cover

- Does not contaminate structures, reliably sprays onto tires and prevents scattering to the surrounding area.
- It is also useful for improving construction quality.
- Considering the maintenance of nozzles and pipes where the cover opens and closes widely,
- has a structure



36% improvement in fuel efficiency maximum, ECO mode (compared to full throttle)

- The eco lamp lights up when the throttle lever and accelerator pedal are operated.

(During the eco lamp (dB reduction 5 from the ultra-low noise standard value

- (*) Achieved a noise level that is dB lower than the 5 ultra-low noise standard value
- It will be more advantageous for construction in residential areas and at night.
- Our in-house test actual value*

| | continuous operation possible time | noise level |
|-------------------|------------------------------------|---|
| Time 20 ECO 704TZ | | 5 dB reduction from ultra-low noise standards |
| 704TZ | Ultra Low Noise Standard Time 12 | |

Easy-to-fold canopy

- A damper has been adopted for light operation.
- Easy to operate even for women

system brake system 3

- It is a braking system with a proven track record.
- (Achievements of 20 years (

Adoption of LED light

- Adopted for all work lights

Equipped with an engine failure diagnosis switch

- Engine error code, to enable quick response, in the unlikely event of a failure
- (Please consult with our sales office (Do can be displayed.

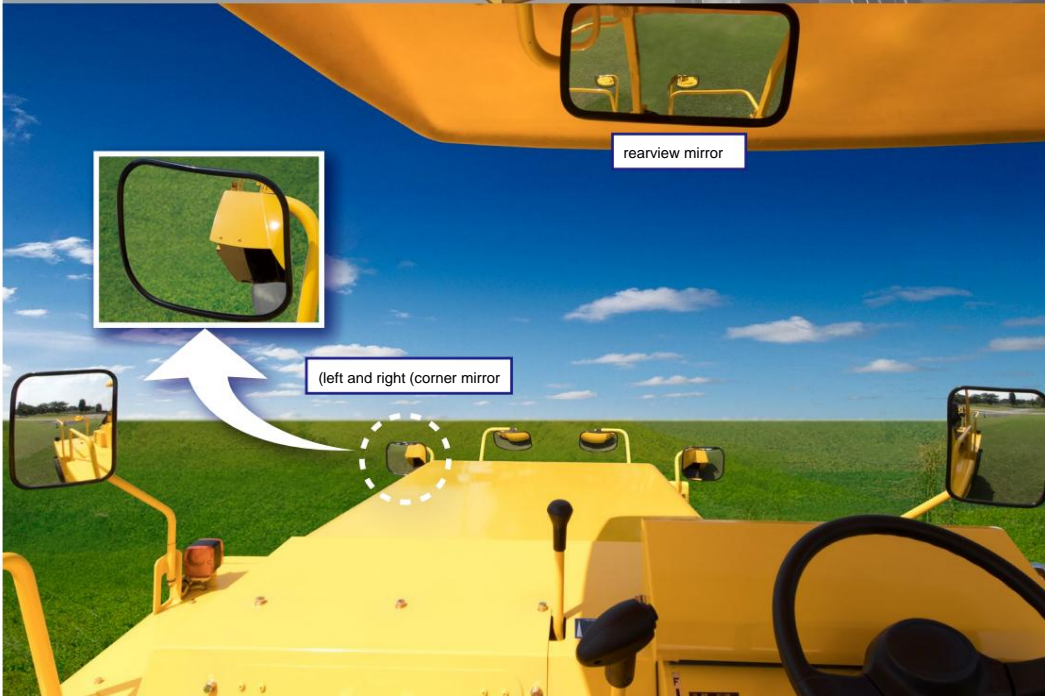


All Anticipation and safety



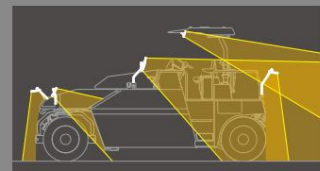
World's largest all-resin sprinkler tank that never rusts

The T22000, which first appeared in the model in 700. The all-resin watering tank and watering nozzle clogging are minimized, so you can always enjoy clean water. It can be worked on, and it can also be taken outside. It can also be used for washing hands with cold water.

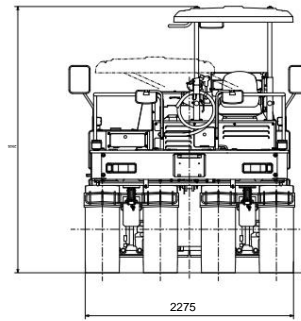
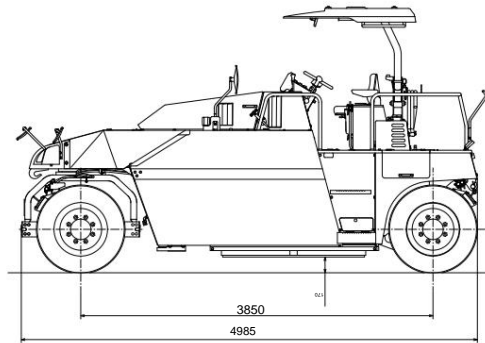
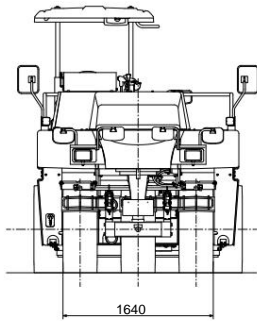


Additional mirror

Reduce rear blind spots as much as possible Safety, reduce line of sight movement. bottom . can be quickly checked in



704TZ



Outline specifications

mm: unit

| form | | tire roller |
|--|-------|---|
| 704TZ nominal type (type name) | | |
| 3TZ1) Chassis type (stamped type) | | |
| kg) With iron ballast (operating mass mass) | | (15,000)12,600 |
| mechanical quality | kg | 9,100 |
| kg) With iron ballast, at operating weight (front axle weight) | | (6,340)5,390 |
| kg) With iron ballast, at operating weight (rear axle weight) | | (8,660)7,210 |
| h / km) Hi / Lo (operating speed performance) | | 24 ÷ 0 / 12 ÷ 0 |
| Hill climbing ability | (°) % | (23)42 |
| 6.3 m) Outer ring standard (minimum turning radius) | | |
| Overall length | mm | 4,985 |
| Width | mm | 2,275 |
| mm) When the canopy is folded (total height) | | (2,360)2,905 |
| compaction width | mm | 2,275 |
| 4 x (OR (PR12 - 20 - 70 / 14 / 3) x OR (PR12 - 20 - 70 / 14) rear / front (number x tire size) | | |
| (2cm / kgf (kPa) per tire (tire pressure) | | (6.1 ~ 2.4)600 ~ 240 |
| mm) with iron ballast (minimum ground clearance) | | (170)235 |
| Manufacturer Agency | | KUBOTA |
| model | | YDN - T - CR - 3800V |
| form | | Supercharged, direct injection, cycle 4, diesel |
| total stroke volume | | L 3.769 |
| Rated output | | -min /) PS ÷ kW 2,200 / (74.2) 54.6 |
| storage battery | | (units x Ah / V (V 2 x 72 / 12) 24 |
| Drive system Transmission device | | Formula) HST (Hydrostatic type |
| driving wheel | | Rear wheel |
| Work brake Braking device | | Forward/reverse lever / Formula) HST (Hydrostatic |
| running brake | | brake pedal / hydraulic internal expansion |
| parking brake | | Panel button / mechanical wet multi-plate type |
| form manipulator | | hydraulic |
| fuel tank tank capacity | | L 91 |
| hydraulic oil tank | | L 78 |
| watering tank | | L 3,500 |
| fluid tank | | L 19 |

. Operator weight is not included. Calculated with a full water spray tank and a full tank of fuel. Operating weight is •. Specifications are subject to change without notice for quality improvement purposes. The conventional unit is entered as a reference value in (). Includes canopy mass, operating mass is

. Special training related to roller operation work, and "Roller operation". Use of fuel other than the appropriate fuel* may cause a significant drop in performance or cause failure.



(03-3434-3401 TEL Hamamatsucho Seiwa Building 1-4-8 Shiba Daimon Minato-ku Tokyo 105-0012 Head Office

011-846-8455 TEL Sapporo Sales Office

082-227-1166 TEL Hiroshima Office

022-231-0731 TEL Sendai Office

092-503-2971 TEL Fukuoka Sales Office

0480-52-6156 TEL Kanto Sales Office

0480-52-1111 TEL Global Service Department

052-702-3141 TEL Nagoya Office

0480-52-6964 TEL Training Center

072-654-3366 TEL Osaka Sales Office

standard equipment

(separate tank specification (liquid sprayer • tool set • ratchet • V24 (accessory socket • watering timer • watering mat •

option

Antifreeze tank) • ÷2.4 (Iron ballast • Seat belt • Michal •

Related laws and regulations

Vehicle-type construction machinery structural

standards ÷ (Large special motor vehicles (safety standards for road

transportation vehicles ÷ Regulations for designation of low-noise

construction machinery ÷ Act on regulations for exhaust gases from special special motor vehicles ÷