

S9 base

100-220 HP

∅ max. 9 cm [3.5 inch]

Heavy duty flail mulcher with reversible linkage

The S9 series machines mulch grass, vegetation and prunings up to 9 cm [3.5"] in diameter. The adjustable rear hood allows you to alter the degree of mulching.

The **S9 base** has a central 3-point linkage. The mulcher is reversible and can be driven in both direction - front and rear.

You can get this model also with motor - ready to go with a hydraulic track loader!

Standard version and characteristics

- > Mulches grass and brush up to 9 cm [3.5"]∅
- > Working speed 3-10 km/h
- > 3 point linkage cat. 2 reversible
- > 1000 rpm gearbox with freewheel and through shaft
- > Belt transmission
- > Adjustable rear hood with rubber protection
- > Front protection with chains
- > Support roller 193 mm ∅
- > Rotor with SMO flails

Optional configuration and accessories

- > 540 rpm gearbox
- > Gearbox with automatic inverter and double freewheel
- > Additional 3-point linkage
- > Front attachment
- > Belt cover on the right (working left)
- > Additional front rubber flap
- > Roller scraper
- > Rubber wheels instead of roller
- > Linkage for for hydraulic track loader / slope groomer and transmission with 80 cm³ motor (available for models 225-300)
- > Attachments for undercanopy maintenance (details see separate brochure)



www.youtube.com/seppimulcher

Tools



Specifications · S9 base		Nominal tractor power 100-220 HP				
Working width	cm [inch]	200 [79]	225 [89]	250 [98]	275 [108]	300 [118]
Overall width	cm [inch]	215 [85]	240 [95]	265 [100]	290 [114]	315 [124]
Depth	cm [inch]	117 [46]	117 [46]	117 [46]	117 [46]	117 [46]
Height	cm [inch]	116 [46]	116 [46]	116 [46]	116 [46]	116 [46]
Weight · base value	kg [lb]	870 [1,918]	940 [2,072]	1.010 [2,227]	1.090 [2,403]	1.170 [2,579]
Belts	qty	5	5	5	5	5
Flails	qty	21	24	27	27	30

S9 base · features

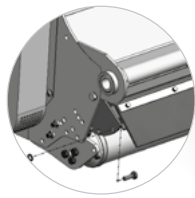
Strong and robust casing made of high-tensile steel, with replaceable wear plates.



Strong welded belt cover minimizes accidental damage



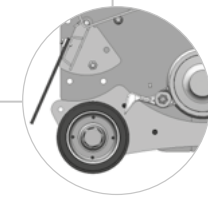
Gearbox for front and rear attachment



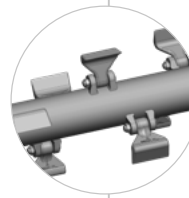
Adjustable hood to set the degree of mulching



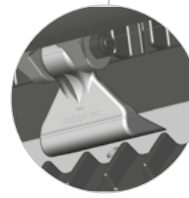
Strong roller with double tapered bearing unit for a long life, the large diameter improves mulching on uneven ground.



Due to the close position of the roller to the rotor, the rotating flails clean the roller, and the cut material is evenly distributed over the top.



Rotor with SMW flails
Low power consumption at maximum throughput with helix rotor technology



Replaceable tempered counter cutters inside the casing provide a perfect result when mulching.



S9 coupé

100-150 HP

Ø max. 9 cm [3.5 inch]

Heavy duty flail mulcher with side shift linkage and compact profile

The S9 series machines mulch grass, vegetation and prunings up to 9 cm [3.5"] in diameter. The adjustable rear hood allows you to alter the degree of mulching.

The side shift is linear and works even while the machine is mowing, with hydraulic control from the tractor seat.

The low and compact profil of the **S9 coupé** allows the machine to mulch very close to the crop and it therefore can work directly under the canopy without damaging fruit.


Standard version and characteristics

- > Mulches grass and brush up to 9 cm [3.5"]Ø
- > Working speed 3-10 km/h
- > 3 point rear linkage cat. 2
- > Linear hydraulic side shift
- > 1000 rpm gearbox with freewheel and through shaft
- > Belt transmission
- > Adjustable rear hood with rubber protection
- > Front protection with chains
- > Support roller 193 mm Ø
- > Rotor with SMO flails

Optional configuration and accessories



- > 540 rpm gearbox
- > Belt cover on the right (working left)
- > Front protection with metal flaps instead of chains
- > Roller scraper



 www.youtube.com/seppimulcher

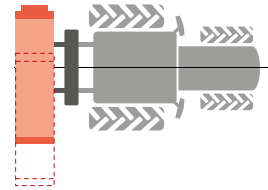
Tools



Specifications · S9 coupé				Nominal tractor power 100-150 HP				
Working width		cm [inch]	200 [79]	225 [89]	250 [98]	275 [108]	300 [118]	
Side shift from		max to the left L R cm [inch]	126 74 [50 29]	126 99 [50 40]	126 124 [50 50]	126 149 [50 59]	126 174 [50 70]	
middle of tractor		max to the right L R cm [inch]	59 141 [23 56]	59 166 [50 65]	59 191 [23 75]	59 216 [23 85]	59 241 [23 96]	
Overall width		cm [inch]	215 [85]	240 [95]	265 [100]	290 [114]	315 [124]	
Depth		cm [inch]	112 [44]	112 [44]	112 [44]	112 [44]	112 [44]	
Height		cm [inch]	105 [41]	105 [41]	105 [41]	105 [41]	105 [41]	
Weight · base value		kg	880 [1,940]	960 [2,116]	1.025 [2,260]	1.110 [2,447]	1.210 [2,668]	
Belts		Anzahl	5	5	5	5	5	
Flails		Anzahl	21	24	27	27	30	

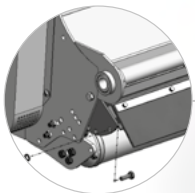
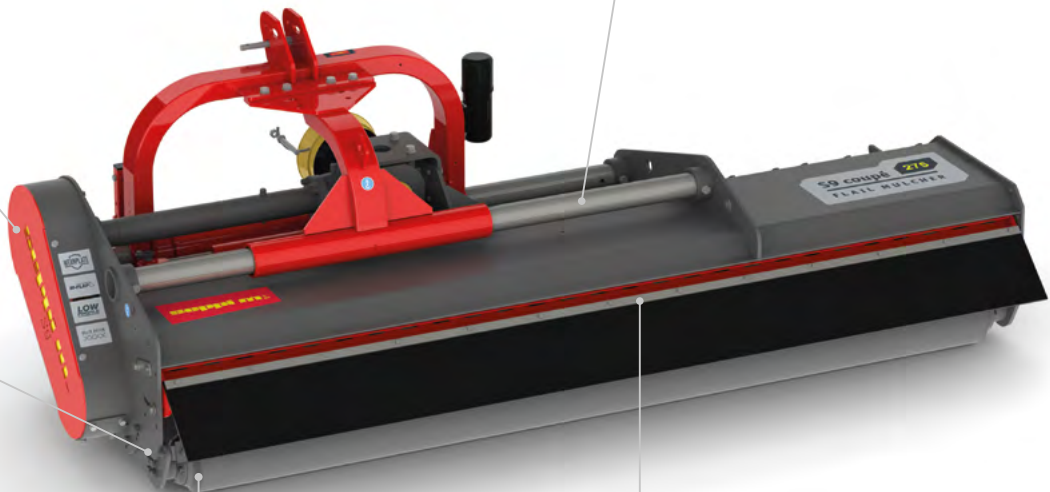
S9 coupé · features

Strong and robust casing made of high-tensile steel, with replaceable wear plates.



The power belt chassis is very compact - it allows the machine to work under low canopy close to the trunk

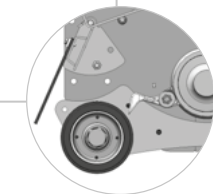
Hydraulic side shift:
linear up to 68 cm [27"]



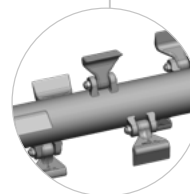
Adjustable hood to set the degree of mulching



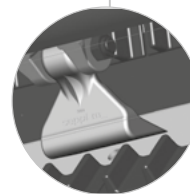
Strong roller with double tapered bearing unit for a long life, the large diameter improves mulching on uneven ground.



Due to the close position of the roller to the rotor, the rotating flails clean the roller, and the cut material is evenly distributed over the top.



Rotor with SMW flails
Low power consumption at maximum throughput with helix rotor technology



Replaceable tempered counter cutters inside the casing provide a perfect result when mulching.



S9 multipla

100-250 HP

Ø max. 9 cm [3.5"]

Powerful large area mulcher for up to 8 meters [26 feet] working width

This multipla combines 3 powerful S9 mulchers that are not only used on large lawns such as golf courses and airports, but also prove their skills in stubble fields shredding demanding material quickly and extensively. It mulches grass and prunings up to 9 cm (3.5 inches) and reaches working widths up to 8 meters (26 feet).

The S9 multipla is available in 4 configurations. With the trailer hitch of the standard version the mulchers are pulled forward. The optional variations are rear mounted to a 3 point linkage, one model is designed for moving forward and the other one prepared for a pushed machine is moving in reserve. In all cases the central mulcher **S9 base** can be used independently, also in front of the tractor. Another version with 3-point linkage has two machines and can be used in combination with a front mulcher.

The mulchers adapt to the terrain during the journey and can be lifted simultaneously via the hydraulic remote control.

Standard version and characteristics

- > Mulches grass and brush up to 9 cm [3.5 inches] Ø
- > Working speed 3-10 km/h
- > **Configuration C1: Trailer hitch** with two lateral mowers and the central S9 base, with 2 wheels, mud guards and hydraulic parking stand
- > 1000 rpm gearbox
- > Belt transmission
- > Hydraulic system
- > Tristop pneumatic brake system
- > Automatic greasing system
- > Adjustable rear hood with rubber protection
- > Front protection with chains
- > Support roller 193 mm Ø
- > Rear lamp kit and chevrons
- > Rotor with SMO flails

Optional configuration and accessories

- > **Configuration C2:**
3 point linkage - 3 mulcher forward drive
- > **Configuration C3:**
3 point linkage - 3 mulcher reserve drive/push
- > **Configuration C4:**
3 point linkage - 2 mulcher forward drive
- > PTO drive shaft with wide angle (compatible with C1)
- > PTO drive shaft (compatible with C2,C3,C4)
- > Roller scraper



[YouTube www.youtube.com/seppimulcher](https://www.youtube.com/seppimulcher)

Tools



Flail
SMO

Specifications · S9 multipla		Standard - C1	C2	C3	C4
Working width	cm [inch]	800 [315]	800 [315]	800 [315]	800 [315]
Overall width	cm [inch]	805 [317]	805 [317]	805 [317]	805 [317]
Transport width	cm [inch]	295 [116]	295 [116]	295 [116]	295 [116]
Depth	cm [inch]	495 [195]	290 [114]	290 [114]	162 [64]
Transport depth	cm [inch]	395 [156]	395 [156]	395 [156]	395 [156]
Weight · base value	kg [lb]	4.950 [10,910]	4.500 [9,920]	4.500 [9,920]	3.400 [7,500]
Belts	qty	3 x 5	3 x 5	3 x 5	2 x 5
SMO flails	qty	87	87	87	60
Nominal tractor power	HP	100-250	100-250	100-250	100-250

S9 multipla · features

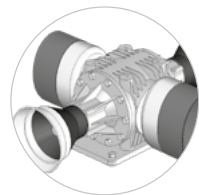
Strong and robust casing made of high-tensile steel, with replaceable wear plates.



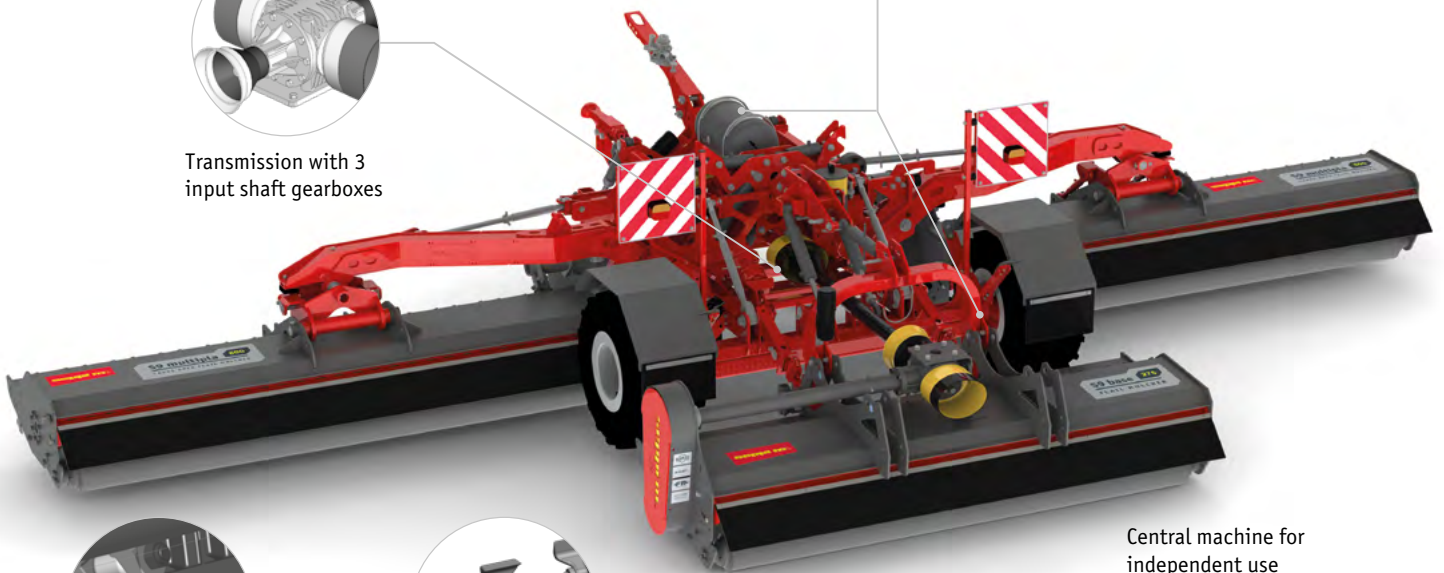
Functions of the hydraulic system:

- Lifting of mulchers including safety hooks
 - Lift limiter for a fast turnaround
 - Towed version C1 with hydraulic parking stand
- 1 single and 1 double acting connection required

TRISTOP break system enable service, parking and emergency brake functions

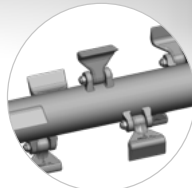


Transmission with 3 input shaft gearboxes



2 COUNTER CUTTERS

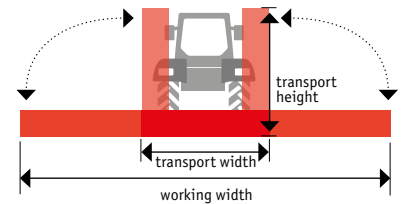
Replaceable tempered counter cutters inside the casing provide a perfect result when mulching.



HELIX ROTOR

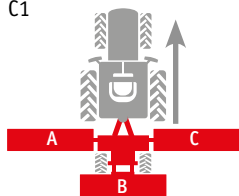
Rotor with SMO flails
Low power consumption at maximum throughput with helix rotor technology

Central machine for independent use



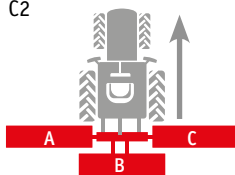
4 Configurations - assembly combinations

C1



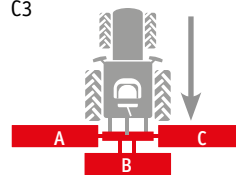
Trailer hitch with 3 machines forward drive

C2



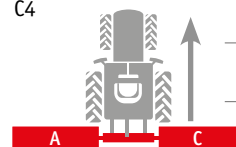
3 point linkage with 3 machines forward drive

C3



3 point linkage with 3 machines reverse drive - push

C4



3 point linkage with 2 machines forward drive

A	B	C
300 cm	275 cm	300 cm
[118"]	[108"]	[118"]

SMO

50-120 HP Ø max. 7 cm [2.8 inch]

The expert among the lightweight mulchers with parallel linkage side shift

Road sides, meadows, pastures – the SMO machines satisfy the needs of professionals in the most varied situations with an even clean cut.

The machines of this series mulch grass and brushwood up to 7 cm in diameter.

The model **SMO** is distinguished by an extraordinarily wide side shift to the right. The standard version is equipped with manual side shift, hydraulic side shift is optional. Total side shift is 73 cm [28.7"].

As an option it is also available with central position and side shift to both sides.

Standard version and characteristics

- > Mulches grass and brush up to 7 cm [2.8"]Ø
- > Working speed 3-10 km/h
- > 3 point rear linkage
≤225: cat. 1&2, ≥250: cat. 2
- > Manual parallel linkage side shift
P-SHIFT central/right
- > Gearbox with freewheel and through shaft
≤200: 540 rpm, ≥225: 1000 rpm
- > Belt transmission
- > Adjustable rear hood with rubber protection
- > Front protection with metal flaps
- > Support roller 152 mm Ø
- > Standard rotor with flails
≤200: SMO, ≥225: SMW

Optional configuration and accessories

- > Rotor with Y flails
- > 540 or 1000 rpm gearbox
- > Hydraulic side shift
- > Side shift central/left
- > Hood with rakes
- > Front protection with chains instead of metal flaps
- > Additional front rubber flap
- > Metal front wheels
- > Rubber wheels instead of roller
- > Roller scraper
- > Attachments for undercanopy maintenance (details see separate brochure)



[YouTube www.youtube.com/seppimulcher](https://www.youtube.com/seppimulcher)

Tools

SMW

SMO



Specifications · SMO

		150 [59]	175 [69]	200 [79]	225 [89]	250 [98]
Working width	cm [inch]	150 [59]	175 [69]	200 [79]	225 [89]	250 [98]
Overall width	cm [inch]	165 [65]	190 [75]	215 [85]	240 [95]	265 [100]
Depth	cm [inch]	120 [47]	120 [47]	120 [47]	120 [47]	120 [47]
Height	cm [inch]	120 [47]	120 [47]	120 [47]	120 [47]	120 [47]
Weight (base value)	kg [lb]	500 [1,100]	550 [1,210]	600 [1,320]	660 [1,450]	720 [1,590]
Belts	qty	4	4	4	5	5
Flails	qty	15	18	21	24	27
Y flails	qty	27	33	39	45	x
Nominal tractor power	HP	50-100	50-100	50-100	50-120	50-120

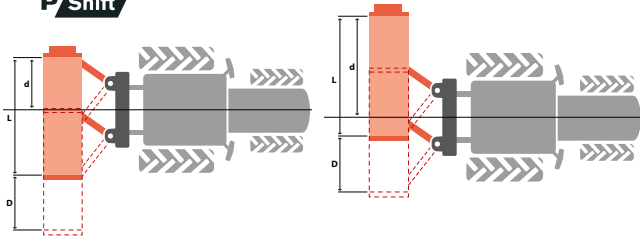
S420 · features

Robust chassis made of high tensile steel.

S420

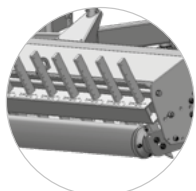
Parallel linkage side shift

P/Shift

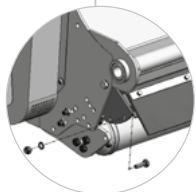


Standard: central/right
 d = 69 cm [27 inch]
 D = 73 cm [73 inch]

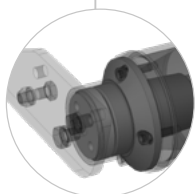
Option: central/left
 d = 131 cm [29 inch]
 D = 73 cm [24 inch]



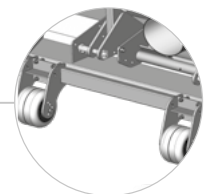
Adjustable hood to set the degree of mulching
M-FLAP



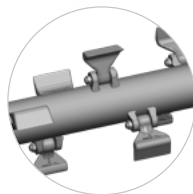
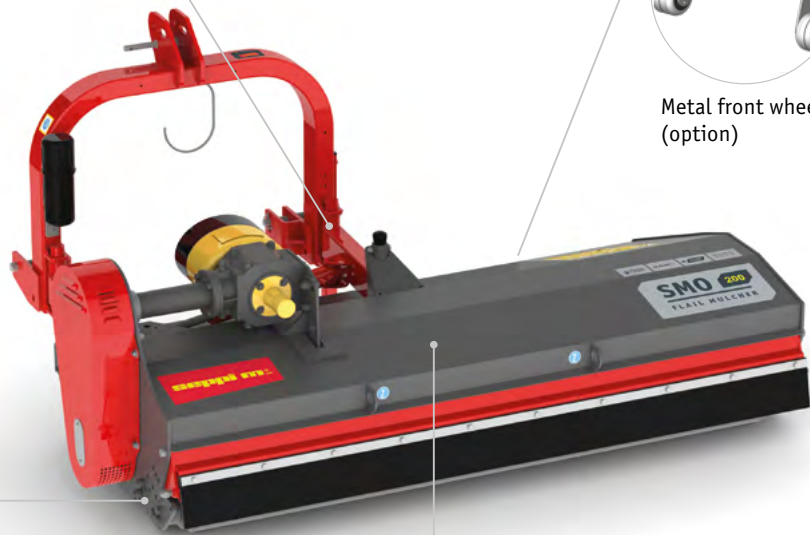
Rake hood complete with rakes (option)



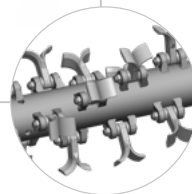
Adjustable support roller, Reinforced bearing and roller



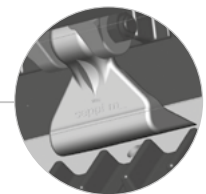
Metal front wheels (option)



Standard rotor with SMW/SMO flails



Optional rotor with Y flails



Tempered counter cutters for a perfect mulching result

Low power consumption at maximum throughput with HELIX ROTOR technology



2 COUNTER CUTTERS

SMO fh

50-120 HP Ø max. 7 cm [2.8 inch]

The expert among the lightweight mulchers with innovative linkage

Road sides, meadows, pastures – the SMO machines satisfy the needs of professionals in the most varied situations with an even clean cut.

The machines of this series mulch grass and brushwood up to 7 cm in diameter.

The **SMO fh** is characterized by an innovative, pyramid-shaped 3-point linkage, suitable for front and rear attachment. The top link connection provides high stability and is easily reversed to allow front or rear mount to be achieved without heavy lifting.

Standard version and characteristics

- > Mulches grass and brush up to 7 cm [2.8"]Ø
- > Working speed 3-10 km/h
- > 3 point linkage cat. 2 reversible
- > Linear hydraulic side shift
L150-175: 33 cm [13 inch] or
L200-275: 55 cm [21.6 inch]
- > 1000 rpm gearbox with freewheel and through shaft
- > Belt transmission
- > Adjustable rear hood with rubber protection
- > Front protection with metal flaps
- > Support roller 152 mm Ø
- > Standard rotor with SMO flails

Optional configuration and accessories

- > Rotor with Y flails
- > 540 rpm gearbox
- > Gearbox with automatic inverter and double freewheel
- > Metal front wheels
- > Front protection with chains instead of metal flaps
- > Rubber wheels instead of roller
- > Additional front rubber flap
- > Roller scraper



www.youtube.com/seppimulcher

Tools



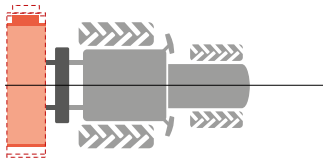
Specifications • SMO fh

		150 [59]	175 [69]	200 [79]	225 [89]	250 [98]	275 [108]
Working width	cm [inch]	150 [59]	175 [69]	200 [79]	225 [89]	250 [98]	275 [108]
Overall width	cm [inch]	165 [65]	190 [75]	215 [85]	240 [95]	265 [105]	280 [115]
Depth	cm [inch]	130 [51]	130 [51]	130 [51]	130 [51]	130 [51]	130 [51]
Height	cm [inch]	120 [47]	120 [47]	120 [47]	120 [47]	120 [47]	120 [47]
Weight (base value)	kg [lb]	660 [1,455]	730 [1,610]	790 [1,740]	850 [1,870]	930 [2,050]	1.020 [2,250]
Belts	qty	4	4	4	5	5	5
Flails	qty	15	18	21	24	27	27
Y flails	qty	27	33	39	45	x	x
Nominal tractor power	HP	50-100	50-100	50-100	50-120	50-120	50-120

SMO fh · features

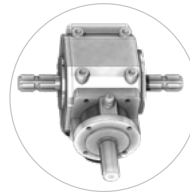
Robust chassis made of high tensile steel.

S420

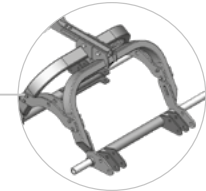


Linear hydraulic side shift

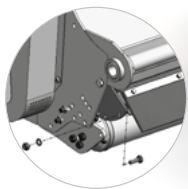
model	each side	total
150-175	16.5 cm [6.5"]	33 cm [13"]
200-275	27.5 cm [10.8"]	55 cm [21.6"]



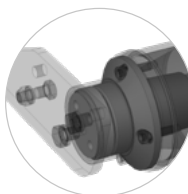
Gearbox for front- and rear attachment



Innovative, pyramid-shaped 3-point linkage with high stability, suitable for front and rear attachment



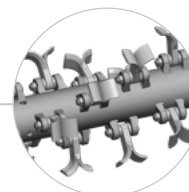
Adjustable hood to set the degree of mulching



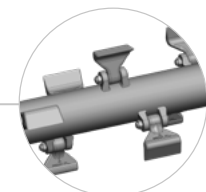
Adjustable support roller, Reinforced bearing and roller



Tempered counter cutters for a perfect mulching result



Optional rotor with Y flails



Standard rotor with SMO flails

Low power consumption at maximum throughput with HELIX ROTOR technology



SMO rev cf

50-120 HP Ø max. 7 cm [2.8 inch]

The expert among the lightweight mulchers with reversible linkage

Road sides, meadows, pastures – the SMO machines satisfy the needs of professionals in the most varied situations with an even clean cut.

The machines of this series mulch grass and brushwood up to 7 cm in diameter.

The model **SMO rev cf** has a central 3-point linkage. The mulcher is reversible and can be driven in both direction - front and rear.

Standard version and characteristics

- > Mulches grass and brush up to 7 cm [2.8"]Ø
- > Working speed 3-10 km/h
- > 3 point linkage cat. 2 reversible
- > 1000 rpm gearbox with freewheel and through shaft
- > Belt transmission
- > Adjustable rear hood with rubber protection
- > Front protection with metal flaps
- > Support roller 152 mm Ø
- > Standard rotor with SMO flails

Optional configuration and accessories

- > Rotor with Y flails
- > 540 rpm gearbox
- > Gearbox with automatic inverter and double freewheel
- > Additional 3-point linkage
- > Front attachment
- > Hood with rakes
- > Front protection with chains instead of metal flaps
- > Additional front rubber flap
- > Metal front wheels
- > Rubber wheels instead of roller
- > Roller scraper
- > Attachments for undercanopy maintenance (details see separate brochure)



www.youtube.com/seppimulcher

Tools



Specifications • SMO rev cf

		150 [59]	175 [69]	200 [79]	225 [89]	250 [98]
Working width	cm [inch]	150 [59]	175 [69]	200 [79]	225 [89]	250 [98]
Overall width	cm [inch]	165 [65]	190 [75]	215 [85]	240 [95]	265 [100]
Depth	cm [inch]	120 [47]	120 [47]	120 [47]	120 [47]	120 [47]
Height	cm [inch]	120 [47]	120 [47]	120 [47]	120 [47]	120 [47]
Weight (base value)	kg [lb]	480 [1,050]	550 [1,210]	600 [1,310]	650 [1,430]	710 [1,560]
Belts	qty	4	4	4	5	5
Flails	qty	15	18	21	24	27
Y flails	qty	27	33	39	45	x
Nominal tractor power	HP	50-100	50-100	50-100	50-120	50-120

S420 rev cf · features

Robust chassis made of high tensile steel.

S420

Adjustable hood to set the degree of mulching
M-FLAP

Gearbox for front and rear attachment
FR FRONTREAR

Rake hood complete with rakes (option)

Metal front wheels (option)

Adjustable support roller, Reinforced bearing and roller

Standard rotor with SMW/SMO flails

Optional rotor with Y flails

Tempered counter cutters for a perfect mulching result
2 COUNTER CUTTERS

Rubber gauge wheels for uneven ground (instead of roller)

Low power consumption at maximum throughput with HELIX ROTOR technology
HELIX ROTOR

SMWA multipla

80-150 HP

∅ max. 5 cm [2 inch]

Large area mulcher for up to 6 meters [20 feet] working width

The SMWA multipla combines 3 machines for mowing large areas such as uncultivated land, parks, golf courses and airports. It mulches grass and prunings up to 5 cm [2 inches] and reaches working widths of 6 meters [20 feet].

The multipla hitch has a central and two lateral mulchers. The central device **SMWA rev cf** can be used independently.

The standard hydraulic system with solenoid valves and remote control allows the lifting of each individual mulcher. The mulchers perfectly follow the contours of the ground for a clean cut.

Standard version and characteristics

- > Mulches grass and brush up to 5 cm [2 inches] ∅
- > Working speed 3-10 km/h
- > Trailer hitch with two lateral mowers and the central SMWA rev cf, with 2 wheels and parking stand
- > 1000 rpm gearbox
- > STOPSAFE safety system
- > Belt transmission
- > Hydraulic system with valves and remote control
- > Adjustable rear hood with rubber protection
- > Front protection with metal flaps
- > Support roller 152 mm ∅
- > Rotor with SMW flails

Optional configuration and accessories

- > PTO drive shaft with freewheel and wide angle
- > Rotor with SML flails
- > Rotor with Y flails
- > 540 rpm gearbox
- > Front protection with metal flaps instead of chains
- > Roller scraper
- > Rear lamp kit with anti-collision bar
- > Mud guards



Tools



Specifications • SMWA multipla		Nominal tractor power 80-150 HP	
Working width	cm [inch]	500 [197]	600 [236]
Overall width	cm [inch]	500 [197]	600 [236]
Transport width	cm [inch]	240 [94]	240 [94]
Depth	cm [inch]	450 [177]	450 [177]
Transport depth	cm [inch]	290 [114]	310 [122]
Weight · base value	kg [lb]	2.780 [6,130]	2.980 [6,570]
Belts	qty	3 x 4	3 x 4
SMW flails	qty	60	66
SML flails	qty	111	123
Y knives	qty	111	123

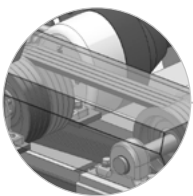
SMWA multipla · features

S420

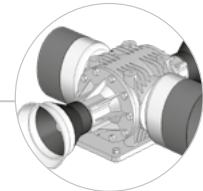
Robust chassis made of high tensile steel.

Functions of the hydraulic system:

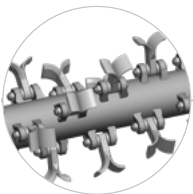
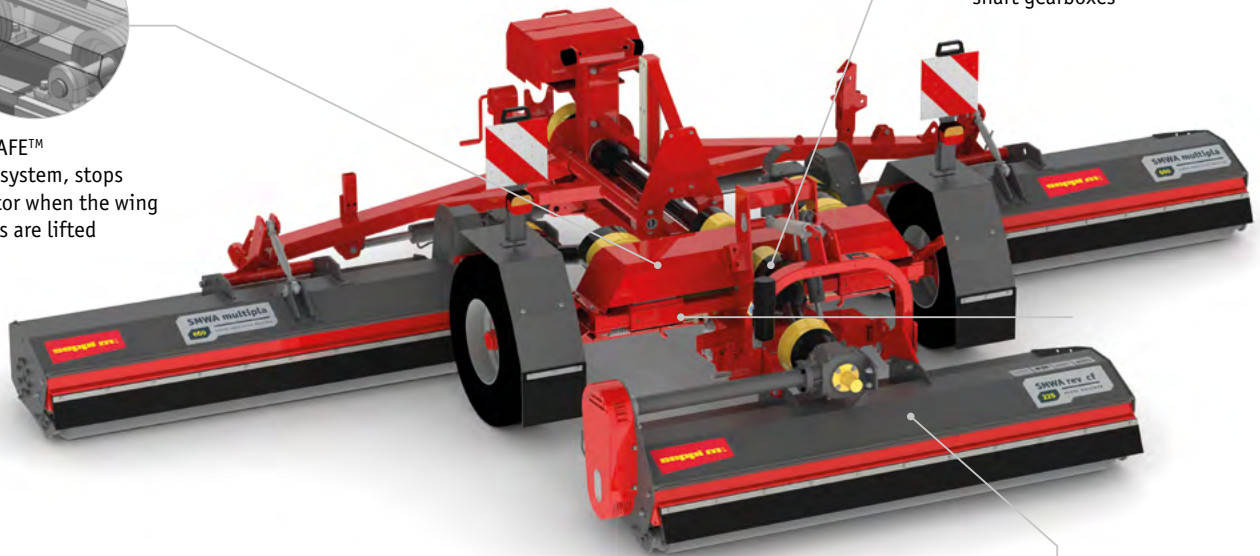
- Lifting of mulchers and enable safety hooks
- 1 double acting connection required



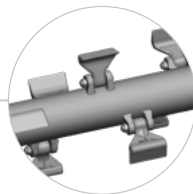
STOPSAFE™ safety system, stops the rotor when the wing mowers are lifted



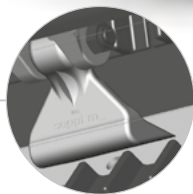
Transmission with 3 input shaft gearboxes



Optional rotor with Y flails
HELIX ROTOR

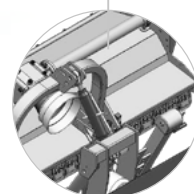


Helical rotor with SMW flails



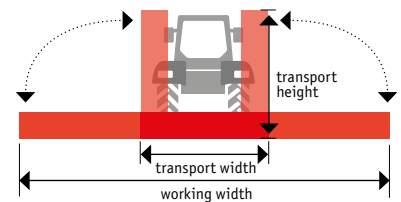
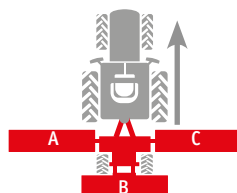
Double counter cutters inside the casing provide a perfect result when mulching.

2 COUNTER CUTTERS



Central machine for independent use

	A	B	C
500	175 cm [69"]	200 cm [79"]	175 cm [69"]
600	200 cm [61"]	225 cm [89"]	200 cm [61"]



Each single mulcher can be folded up for transport and parking.

SMWA rev cf

30-90 HP Ø max. 5 cm [2 inch]

Reversible linkage for front and rear

Agriculture or greenspace maintenance? All easy ...
– the mulchers of the SMW series mulch grass, prunings and bushes up to 5 cm [2"] in diameter.

The SMWA rev cf standard version has manual side shift with a two position bolt-on hitch: central and 17 cm [6.7"] to the right.

Standard version and characteristics

- > Mulches grass and brush up to 5 cm [2"]Ø
- > Working speed 3-10 km/h
- > 3 point linkage cat. 1&2 reversible
- > Side shift with 2 positions: central and 17 cm [6.7"] to the right
- > 540 rpm gearbox with freewheel and through shaft
- > Belt transmission
- > Adjustable rear hood with rubber protection
- > Front protection with metal flaps
- > Support roller 152 mm Ø
- > Standard rotor with SMW flails

Optional configuration and accessories

- > Rotor with Y flails
- > 750 or 1000 rpm gearbox
- > Gearbox with automatic inverter and double freewheel
- > Additional 3-point linkage
- > Front attachment
- > Hood with rakes
- > Metal front wheels
- > Front protection with chains instead of metal flaps
- > Additional front rubber flap
- > Roller scraper
- > Attachments for undercanopy maintenance (details see separate brochure)



YouTube www.youtube.com/seppimulcher

Tools



Specifications · SMWA rev cf

		115 [45]	125 [49]	135 [53]	145 [57]	155 [61]	175 [69]	200 [79]	225 [89]
Working width	cm [inch]	115 [45]	125 [49]	135 [53]	145 [57]	155 [61]	175 [69]	200 [79]	225 [89]
Overall width	cm [inch]	127 [50]	137 [54]	147 [58]	157 [62]	167 [66]	187 [74]	212 [84]	237 [93]
Depth	cm [inch]	90 [35]	90 [35]	90 [35]	90 [35]	90 [35]	90 [35]	90 [35]	90 [35]
Height	cm [inch]	95 [37]	95 [37]	95 [37]	95 [37]	95 [37]	95 [37]	95 [37]	95 [37]
Weight (base value)	kg [lb]	345 [760]	355 [780]	385 [850]	415 [910]	440 [970]	485 [1070]	515 [1140]	535 [1180]
Belts	qty	3	3	3	3	3	4	4	4
Flails	qty	12	12	12	15	15	18	21	24
Y flails	qty	21	24	24	27	27	33	39	45
Nominal tractor power	HP	30-65	30-65	30-65	30-65	30-65	40-90	40-90	40-90

SMWA rev cf · features

Robust chassis made of high tensile steel.

S420

Gearbox with freewheel and through shaft for front and rear attachment
FR FRONT&REAR

side shift:
manual by 2 positions
17 cm [6.7 inch]

Metal front wheels (option)

Adjustable hood to set the degree of mulching
M-FLAP

Support roller, adjustable in height Reinforced bearing and roller

Standard rotor with SMW flails
Low power consumption at maximum throughput with HELIX ROTOR technology
HELIX ROTOR

Optional rotor with Y flails

Tempered counter cutters for a perfect mulching result
2 COUNTER CUTTERS

SMWA s

30-90 HP Ø max. 5 cm [2 inch]

Reversible linkage and hydraulic side shift

Agriculture or greenspace maintenance? All easy ...
– the mulchers of the SMW series mulch grass, prunings and bushes up to 5 cm [2"] in diameter.

The SMWA s can be shifted to the right up to a maximum of 27 cm [10.6"]. The side shift is linear and works even while the machine is mowing, with hydraulic control from the tractor seat.

Standard version and characteristics

- > Mulches grass and brush up to 5 cm [2"]Ø
- > Working speed 3-10 km/h
- > 3 point linkage cat. 1&2 reversible
- > Linear hydraulic side shift 27 cm [10.6"]
- > 540 rpm gearbox with freewheel and through shaft
- > Belt transmission
- > Adjustable rear hood with rubber protection
- > Front protection with metal flaps
- > Support roller 152 mm Ø
- > Standard rotor with SMW flails

Optional configuration and accessories

- > Rotor with Y flails
- > 750 or 1000 rpm gearbox
- > Gearbox with automatic inverter and double freewheel
- > Additional 3-point linkage
- > Front attachment
- > Hood with rakes
- > Metal front wheels
- > Rubber wheels instead of roller
- > Front protection with chains instead of metal flaps
- > Additional front rubber flap
- > Roller scraper



YouTube www.youtube.com/seppimulcher

Tools



Specifications · SMWAs

		115 [45]	125 [49]	135 [53]	145 [57]	155 [61]	175 [69]	200 [79]
Working width	cm [inch]	115 [45]	125 [49]	135 [53]	145 [57]	155 [61]	175 [69]	200 [79]
Overall width	cm [inch]	127 [50]	137 [54]	147 [58]	157 [62]	167 [66]	187 [74]	212 [84]
Depth	cm [inch]	90 [35]	90 [35]	90 [35]	90 [35]	90 [35]	90 [35]	90 [35]
Height	cm [inch]	105 [41]	105 [41]	105 [41]	105 [41]	105 [41]	105 [41]	105 [41]
Weight (base value)	kg [lb]	380 [830]	390 [850]	420 [920]	440 [960]	455 [970]	505 [1110]	530 [1180]
Belts	qty	3	3	3	3	3	4	4
Flails	qty	12	12	12	15	15	18	21
Y flails	qty	21	24	24	27	27	33	39
Nominal tractor power	HP	30-65	30-65	30-65	30-65	30-65	40-90	40-90

SMWA s · features

Robust chassis made of high tensile steel.

S420

Gearbox for front- and rear attachment
FR FRONTREAR

Metal front wheels (option)

Adjustable hood to set the degree of mulching
M-FLAP

**Support roller, adjustable in height
Reinforced bearing and roller**

**Standard rotor with SMW flails
Low power consumption at maximum throughput with HELIX ROTOR technology**
HELIX ROTOR

Optional rotor with Y flails

Tempered counter cutters for a perfect mulching result
2 COUNTER CUTTERS

**Hydraulic side shift:
linear 27 cm [10.6"]**

SMWA slim

40-90 HP Ø max. 5 cm [2 inch]

Ultra slim mulching mower - for use in rows with low canopy

The innovative drive concept and compact design make the SMWA slim highly maneuverable in tight situations.

It allows the machine to mulch very close to the crop and therefore can work directly under the canopy without damaging fruit.

Helical distributed and high resistant SMW-flails for universal use are for high cutting quality at uniformly distributed power.

Standard version and characteristics

- > Mulches grass and brush up to 5 cm [2"]Ø
- > Working speed 3-10 km/h
- > 3 point linkage cat. 1&2 reversible
- > Linear hydraulic side shift 27 cm [10.6"]
- > 540 rpm gearbox with freewheel and through shaft
- > Belt transmission with 2+3 high power belts
- > Adjustable rear hood with rubber protection
- > Front protection with metal flaps
- > Support roller 152 mm Ø
- > Standard rotor with SMW flails

Optional configuration and accessories

- > 1000 rpm gearbox
- > Gearbox with automatic inverter and double freewheel
- > Additional 3-point linkage
- > Front attachment
- > Hood with rakes
- > Front protection with chains instead of metal flaps
- > Roller scraper
- > Attachments for undercanopy maintenance (details see separate brochure)



www.youtube.com/seppimulcher

Tools



Specifications · SMWA slim

		135 [53]	145 [57]	155 [61]	175 [69]	200 [79]	225 [89]
Working width	cm [inch]	135 [53]	145 [57]	155 [61]	175 [69]	200 [79]	225 [89]
Overall width	cm [inch]	143 [56]	153 [60]	163 [64]	183 [72]	208 [82]	233 [92]
Depth	cm [inch]	90 [35]	90 [35]	90 [35]	90 [35]	90 [35]	90 [35]
Height · top edge belt chassis	cm [inch]	54 [21]	54 [21]	54 [21]	54 [21]	54 [21]	54 [21]
Height · top edge 3 point linkage	kg [lb]	110 [43]	110 [43]	110 [43]	110 [43]	110 [43]	110 [43]
Weight (base value)	qty	460 [1,010]	470 [1,032]	495 [1,090]	520 [1,140]	550 [1,210]	600 [1,330]
Belts	qty	5	5	5	5	5	5
Flails	qty	12	15	15	18	21	24
Nominal tractor power	HP	40-90	40-90	40-90	40-90	40-90	40-90

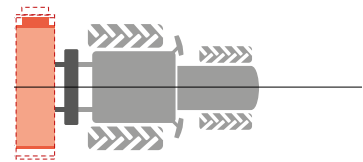
SMWA slim · features

Robust chassis made of high tensile steel.

S420

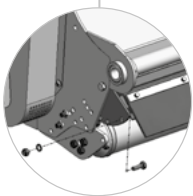


Gearbox for front- and rear attachment

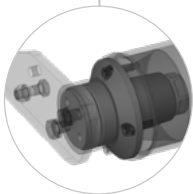


Hydraulic side shift - linear right/left
2 x 13.5 cm = 27 cm
[2 x 5 inch = 10 inch]

The power belt chassis is very compact - this allows the machine to work close to the crop



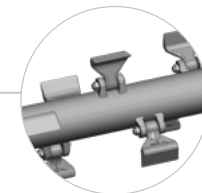
Adjustable hood to set the degree of mulching



Support roller, adjustable in height
Reinforced bearing and roller



Tempered counter cutters for a perfect mulching result



Rotor with SMW flails
Low power consumption at maximum throughput with HELIX ROTOR technology



SMWO

30-90 HP Ø max. 5 cm [2 inch]

Mulcher with generous side shift

Agriculture or greenspace maintenance? All easy ...
– the mulchers of the SMW series mulch grass, prunings and bushes up to 5 cm [2"] in diameter.

The model SMWO is distinguished by an extraordinarily wide side shift to the right. The parallel linkage system allows the machines to work under the trees and close to the crop leaving a much cleaner result.

Standard version and characteristics

- > Mulches grass and brush up to 5 cm [2"] Ø
- > Working speed 3-10 km/h
- > 3 point rear linkage cat. 1&2
- > Manual parallel linkage side shift P-SHIFT
- > 540 rpm gearbox with freewheel and through shaft
- > Belt transmission
- > Adjustable rear hood with rubber protection
- > Front protection with metal flaps
- > Support roller 152 mm Ø
- > Standard rotor with SMW flails

Optional configuration and accessories

- > Rotor with Y flails
- > 1000 rpm gearbox
- > Reinforced transmission
- > Hydraulic side shift
- > Hood with rakes
- > Metal front wheels
- > Front protection with chains instead of metal flaps
- > Additional front rubber flap
- > Roller scraper
- > Attachments for undercanopy maintenance (details see separate brochure)



[YouTube www.youtube.com/seppimulcher](https://www.youtube.com/seppimulcher)

Tools



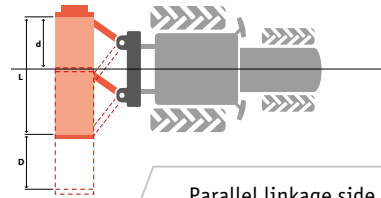
Specifications · SMWO

Working width	cm [inch]	135 [53]	145 [57]	155 [61]
Overall width	cm [inch]	147 [58]	157 [62]	167 [66]
Depth	cm [inch]	120 [47]	120 [47]	120 [47]
Height	cm [inch]	95 [37]	95 [37]	95 [37]
Weight (base value)	kg [lb]	410 [900]	430 [940]	445 [980]
Belts	qty	3	3	3
Flails	qty	12	15	15
Y flails	qty	24	27	27
Nominal tractor power	HP	30-65	30-65	30-65

SMWO · features

Robust chassis made of high tensile steel.

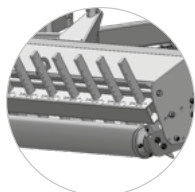
S420



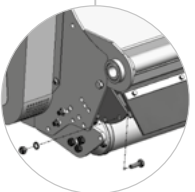
Parallel linkage side shift

L	d	D
135-150	73 cm [29"]	62 cm [24"]
155	82 cm [32"]	62 cm [24"]

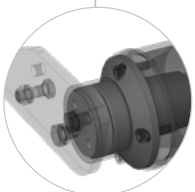
P/Shift



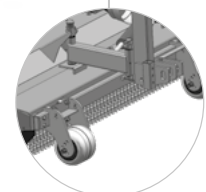
Rake hood complete with rakes (option)



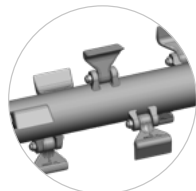
Adjustable hood to set the degree of mulching **M-FLAP**



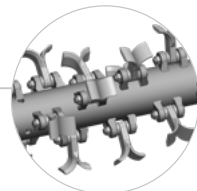
Adjustable roller, Reinforced bearing and roller



Metal front wheels (option)



Standard rotor with SMW flails



Optional rotor with Y flails



Tempered counter cutters for a perfect mulching result

Low power consumption at maximum throughput with HELIX ROTOR technology



WBS

130-250 HP

∅ max. 11 cm [4.3 inch]

Strong heavy duty flail mulcher with reversible linkage

WBS series machines mulch grass, vegetation and prunings up to 11 cm [4.3"] in diameter. The adjustable rear hood allows you to alter the degree of mulching.

The **WBS** has a central 3-point linkage. The mulcher is reversible and can be driven in both direction - front and rear.

You can get this model also with motor - ready to go with a hydraulic track loader!

Standard version and characteristics

- > Mulches grass and brush up to 11 cm [4.3"]∅
- > Working speed 3-10 km/h
- > 3 point linkage cat. 2 reversible
- > 1000 rpm gearbox with freewheel and through shaft
- > Belt transmission
- > Adjustable rear hood with rubber protection
- > Front protection with chains
- > Support roller 193 mm ∅
- > Rotor with SMO flails

Optional configuration and accessories

- > 540 rpm gearbox
- > Additional 3-point linkage
- > Front attachment
- > Additional front rubber flap
- > Rake hood complete with rakes
- > Fine shred kit
- > Linkage for for hydraulic track loader / slope groomer and transmission with 80 cm³ motor (available for models 225, 300, 350)



www.youtube.com/seppimulcher

Tools

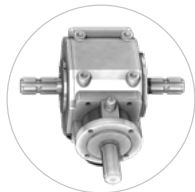


Specifications · WBS		Nominal tractor power 130-250 HP				
		225 [89]	250 [98]	275 [108]	300 [118]	350 [138]
Working width	cm [inch]	225 [89]	250 [98]	275 [108]	300 [118]	350 [138]
Overall width	cm [inch]	245 [96]	270 [106]	295 [116]	320 [126]	370 [146]
Depth	cm [inch]	140 [55]	140 [55]	140 [55]	140 [55]	140 [55]
Height	cm [inch]	125 [49]	125 [49]	125 [49]	125 [49]	125 [49]
Weight · base value	kg [lb]	1.210 [2,670]	1.270 [2,800]	1.370 [3,020]	1.420 [3,130]	1.600 [3,530]
Belts	qty	5	5	5	5	5
Flails	qty	24	26	28	32	36

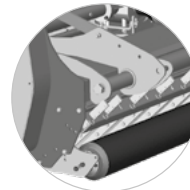
WBS · features

Robust reinforced chassis made of high tensile steel.

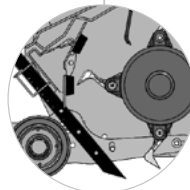
S420



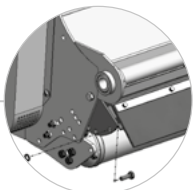
Powerful gearbox with freewheel and through shaft for front and rear mount and reverse drive



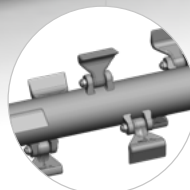
Optional rear hood with rakes for better collection of prunings and branches



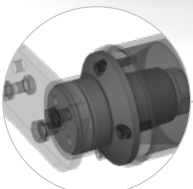
Optional fine shred kit - hood with rakes and additional rows of counter cutters



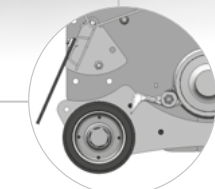
Adjustable hood to set the degree of mulching



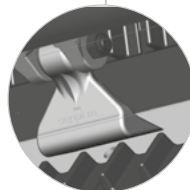
Rotor with SMW flails
Low power consumption at maximum throughput with helix rotor technology



Strong roller with double tapered bearing unit for a long life, the large diameter improves mulching on uneven ground.



Due to the close position of the roller to the rotor, the rotating flails clean the roller, and the cut material is evenly distributed over the top.



Replaceable tempered counter cutters inside the casing provide a perfect result when mulching.



WBS fh

130-250 HP

∅ max. 11 cm [4.3 inch]

Strong heavy duty flail mulcher with innovative reversible linkage

The WBS series machines mulch grass, vegetation and prunings up to 11 cm [4.3"] in diameter. The adjustable rear hood allows you to alter the degree of mulching.

The **WBS fh** is characterized by an innovative, pyramid-shaped 3-point linkage, suitable for front and rear attachment. The top link connection provides high stability and is easily reversed to allow front or rear mount to be achieved without heavy lifting.

Standard version and characteristics

- > Mulches grass and brush up to 11 cm [4.3"]∅
- > Working speed 3-10 km/h
- > 3 point linkage cat. 2 reversible
- > Linear hydraulic side shift
- > 1000 rpm gearbox with freewheel and through shaft
- > Belt transmission
- > Adjustable rear hood with rubber protection
- > Front protection with chains
- > Support roller 193 mm ∅
- > Rotor with SMO flails

Optional configuration and accessories

- > 540 rpm gearbox
- > Front attachment
- > Additional front rubber flap
- > Rake hood complete with rakes
- > Fine shred kit



www.youtube.com/seppimulcher

Tools

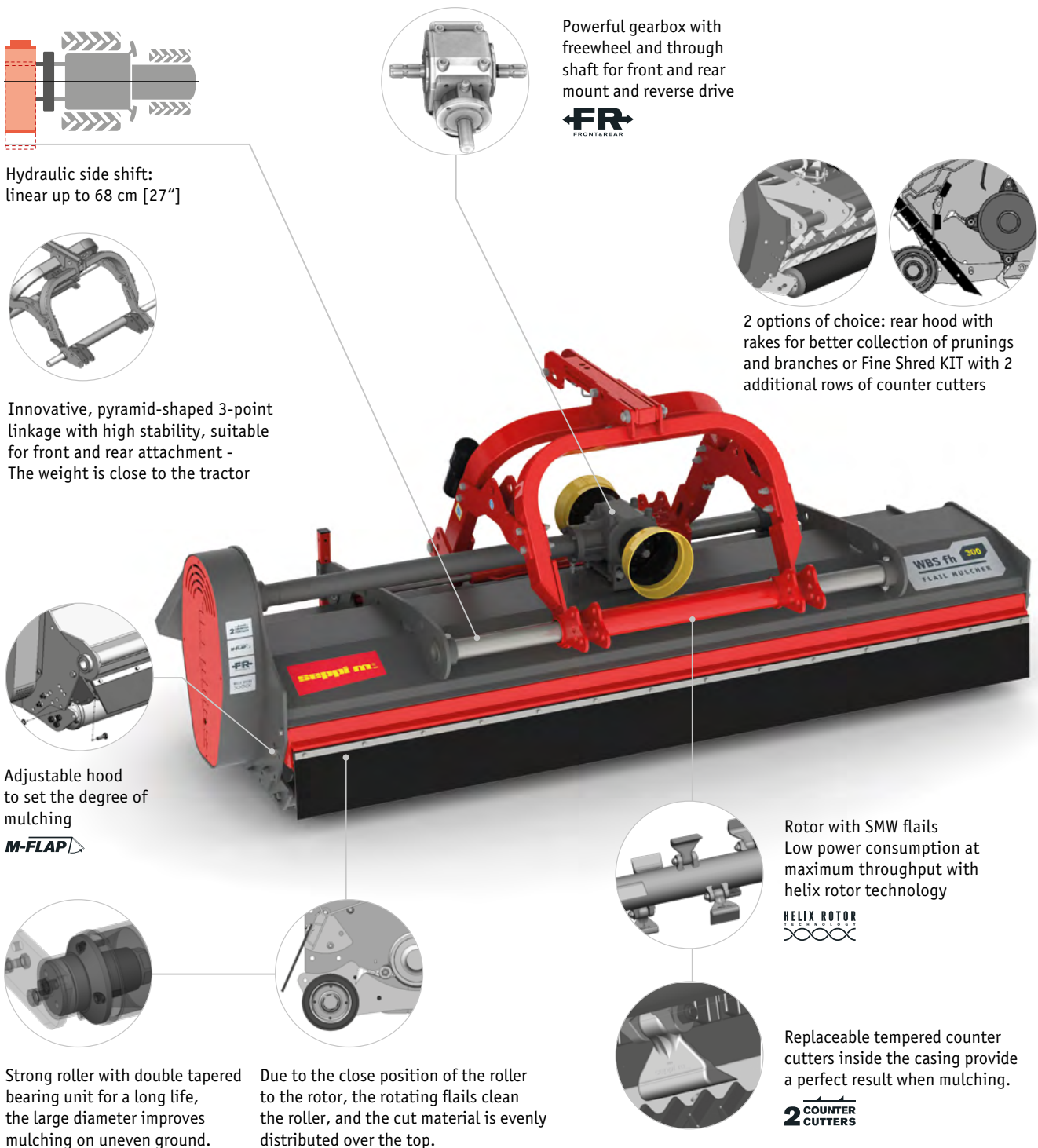


Specifications · WBS fh				Nominal tractor power 130-250 HP				
			225 [89]	250 [98]	275 [108]	300 [118]	350 [138]	
Working width	cm [inch]							
Side shift from	max to the left	L R cm [inch]	133 92 [52 36]	158 92 [62 36]	171 104 [67 41]	183 117 [72 46]	208 142 [82 56]	
	max to the right	L R cm [inch]	66 159 [26 63]	91 159 [36 63]	103 172 [41 68]	116 184 [46 72]	141 209 [56 82]	
Overall width	cm [inch]		245 [96]	270 [106]	295 [116]	320 [126]	370 [146]	
Depth	cm [inch]		140 [55]	140 [55]	140 [55]	140 [55]	140 [55]	
Height	cm [inch]		125 [49]	125 [49]	125 [49]	125 [49]	125 [49]	
Weight · base value	kg		1.480 [3,260]	1.540 [3,400]	1.650 [3,640]	1.700 [3,750]	1.880 [4,150]	
Belts	Anzahl		5	5	5	5	5	
Flails	Anzahl		24	26	28	32	36	

WBS fh · features

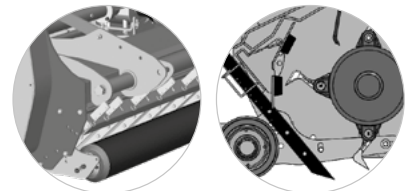
Robust reinforced chassis made of high tensile steel.

S420



Hydraulic side shift:
linear up to 68 cm [27"]

Powerful gearbox with
freewheel and through
shaft for front and rear
mount and reverse drive



2 options of choice: rear hood with
rakes for better collection of prunings
and branches or Fine Shred KIT with 2
additional rows of counter cutters

Innovative, pyramid-shaped 3-point
linkage with high stability, suitable
for front and rear attachment -
The weight is close to the tractor

Adjustable hood
to set the degree of
mulching



Rotor with SMW flails
Low power consumption at
maximum throughput with
helix rotor technology



Strong roller with double tapered
bearing unit for a long life,
the large diameter improves
mulching on uneven ground.

Due to the close position of the roller
to the rotor, the rotating flails clean
the roller, and the cut material is evenly
distributed over the top.

Replaceable tempered counter
cutters inside the casing provide
a perfect result when mulching.

