

# L9 flex

100-180 HP Ø max. 9 cm [3.5 inch]

## Large load mulcher for professional use

The model **L9 flex** is a powerful and reliable ditch mulcher for large areas.

The particularly stable construction with the PENTALINK system allows the mulcher its high performance along riverbanks and roadsides.

Its new design renders it possible to clear wide ditches efficiently while it can also be tilted up or down while operating by means of a hydraulic system. This characteristic makes the mulcher perfect for all those sloping terrains described above.

The FLEX-SAFE anti-collision system guarantees the operator time to react.

The wide-diameter mulcher roller facilitates driving on uneven terrain. It is height-adjustable and able to define the cutting height.

## Standard version and characteristics

- > Mulches grass and brush up to 9 cm [3.5"] Ø
- > Working speed 3-10 km/h
- > PENTALINK system  
3 point linkage cat. 3  
and 2 additional attachment points
- > FLEX-SAFE anti-collision system
- > 540 rpm gearbox
- > Belt transmission
- > Hydraulic side shift
- > Hydraulic inclination
- > Support roller under the base unit,  
adjustable roller under the mulcher
- > Front protection with chains
- > Rear protection with rubber
- > Triple helical rotor with flails
- > 2 rows of tempered counter cutters

## Optional configuration and accessories

- > PTO drive shaft  
with double wide angle
- > 750 or 1000 rpm gearbox
- > Roller scraper
- > Hydraulic adjustable front hood  
(not available for 275)
- > Additional front rubber flap

## Required hydraulic fittings

2 double acting



[www.youtube.com/seppimulcher](https://www.youtube.com/seppimulcher)

## Specifications · L9 flex

		175 [69]	200 [79]	225 [89]	200 [79]	225 [89]
Working width	cm[inch]	175 [69]	200 [79]	225 [89]	200 [79]	225 [89]
Overall width	cm[inch]	225-415 [89-163]	225-440 [89-173]	225-465 [89-183]	225-490 [89-193]	225-515 [89-203]
Depth · transport	cm[inch]	140 [55]	140 [55]	140 [55]	140 [55]	140 [55]
Height	cm[inch]	110-245 [43-96]	110-270 [43-106]	110-295 [43-116]	110-320 [43-126]	110-345 [43-136]
Weight · base value	kg [lbs]	1.580 [3,480]	1.650 [3,640]	1.720 [3,790]	1.800 [3,970]	1.880 [4,140]
Belts	qty	5	5	5	5	5
Flails	qty	18	21	24	27	27
Tractor weight	kg	4.000 [8,800]	4.000 [8,800]	4.000 [8,800]	4.500 [9,900]	4.500 [9,900]
Nominal Power	HP	100-180	100-180	100-180	100-180	100-180

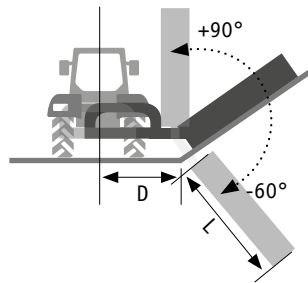
## Tools Flails



SMO

### L9 flex · features

Strong and robust casing made of high-tensile steel, with replaceable wear plates.

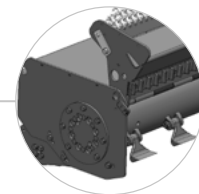


The boom can be angled 90 ° upwards and tilted 60° downwards

Working depth from the edge  
 $L = \text{working width} + 20 \text{ cm [8 inch]}$   
 Maximum reach with innovative parallelogram side shift  
 $D = 124\text{-}231 \text{ cm [49-91 inch]}$

**P/Shift**

Efficient contour adaption with SPACE LINK suspension



Easy mulching of heavy brush with hydraulically adjustable front hood (option for 175|200|225|250)



Safe and comfortable connection with PENTALINK stabilization system



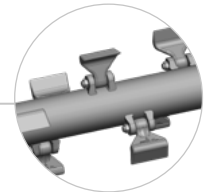
Safety and prevention thanks to FLEX-SAFE anti-collision system

**FLEX-SAFE**



Tempered counter cutters for a perfect mulching result

**2 COUNTER CUTTERS**



Rotor with SMW/SMO flails  
Low power consumption at maximum throughput with HELIX ROTOR technology

**HELIX ROTOR**

# SMO avs

60-120 HP Ø max. 7 cm [2.8 inch]

## Robust and versatile mulchers for all situations

The Seppi **SMO avs** is an offsetting mulcher that demonstrates the height of its potential above all on steep terrain. This is a classic model of the agricultural sector.

The hydraulic side shift and hydraulic up and down angling make this device particularly versatile.

The cutting height can be set by adjusting the roller, while the mulching angle can be adapted by adjusting the rear hydraulic hood.

**SMO avs** is perfect for maintenance works on roadsides, sloping terrains and canals, but is also used for other applications in the agricultural sector.

## Standard version and characteristics

- > Mulches grass and brush up to 7 cm [2.8"] Ø
- > Working speed 1-5 km/h
- > 3 point linkage cat. 2
- > Safety breakaway FLEX-SAFE
- > 540 rpm gearbox with freewheel
- > Belt transmission
- > Hydraulic side shift
- > Hydraulic inclination
- > Floating system
- > Adjustable support roller
- > Adjustable rear hood with rubber protection M-FLAP
- > Front protection with metal flaps
- > Triple helical rotor with flails
- > 2 rows of tempered counter cutters

## Optional configuration and accessories

- > Rotor with Y flails
- > PTO drive shaft with double wide angle
- > 1000 rpm gearbox
- > Belt cover on the right for working on the left
- > Roller scraper
- > Lateral support rollers 160 mm [6 inch] Ø
- > Front protection with chains
- > Additional front rubber flap

## Required hydraulic fittings

2 double acting



[www.youtube.com/seppimulcher](https://www.youtube.com/seppimulcher)

## Specifications • SMO avs

Working width	cm [inch]	<b>175 [69]</b>	<b>200 [79]</b>	<b>225 [89]</b>
Overall width	cm [inch]	220 [87]	245 [96]	270 [106]
Depth · transport	cm [inch]	190 [75]	190 [75]	190 [75]
Height	cm [inch]	110 [43]	110 [43]	110 [43]
Weight · base value	kg [lbs]	890 [1,960]	940 [2,070]	695 [2,250]
Belts	qty	4	4	5
Flails	qty	SMO 18	SMO 21	SMW 24
Y flails	qty	SMO 33	SMO 39	SMW 45
Tractor weight	kg	4.000 [8,800]	4.500 [9,900]	5.200 [11,400]
Nominal Power	HP	60-120	70-120	80-120

## Tools

SMO

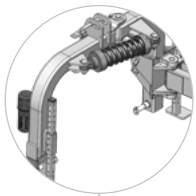
SMW



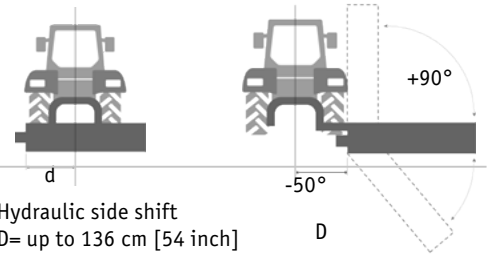
### SMO avs · features

Robust chassis made of high tensile steel.

S420



Standard safety breakaway to prevent breakage of the linkage. Articulated attachment frame allows dynamic flexation  
**FLEX-SAFE**

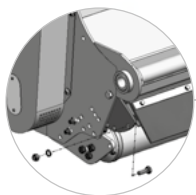


Hydraulic side shift  
D= up to 136 cm [54 inch]  
d= 42 cm [17 inch]

The boom can be angled 90 ° upwards and tilted 50 ° downwards

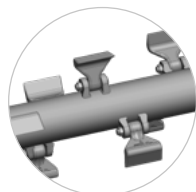
Two floating positions  
- Vertical floating up/down  
- Floating of the mulching head (tilt)

**FLOAT**



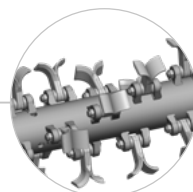
Adjustable hood to set the degree of mulching

**M-FLAP**



Standard rotor with SMW/SMO flails

HELIX ROTOR



Optional rotor with Y flails



Tempered counter cutters for a perfect mulching result

**2 COUNTER CUTTERS**

# SMWA avs

50-90 HP Ø max. 5 cm [2 inch]

## Manoeuvrable flail mulcher for offsetting operations

The Seppi **SMWA avs** is an offsetting mulcher that demonstrates the height of its potential above all on steep terrain.

The rear attached tractor is able to reach even the steepest slopes.

The side shift feature and ample space for up and down movements makes the Seppi **SMWA avs** a particularly manageable mulcher.

Even in the tightest work spaces, it is still lightweight and easy to handle, making it especially suited to orchards and vineyards. The larger versions on the other hand are ideal for landscaping and public sector maintenance works.

## Standard version and characteristics

- > Mulches grass and brush up to 5 cm [2"] Ø
- > Working speed 1-5 km/h
- > 3 point linkage cat. 2
- > 540 rpm gearbox with freewheel
- > Belt transmission
- > Hydraulic side shift
- > Hydraulic inclination
- > Floating system
- > Adjustable support roller
- > Adjustable rear hood with rubber protection M-FLAP
- > Front protection with metal flaps
- > Triple helical rotor with flails
- > 2 rows of tempered counter cutters

## Optional configuration and accessories

- > Rotor with Y flails
- > PTO drive shaft with double wide angle
- > 750 rpm gearbox
- > External transmission (only 175+200)
- > Front attachment
- > Safety breakaway FLEX-SAFE (only rear attachment)
- > Reinforced belt protection
- > Belt cover on the right for working on the left
- > Roller scraper
- > Lateral support rollers 160 mm [6 inch] Ø
- > Front protection with chains
- > Additional front rubber flap

## Required hydraulic fittings

1 double & 1 single acting



[www.youtube.com/seppimulcher](https://www.youtube.com/seppimulcher)

## Specifications • SMWA avs

Working width	cm [inch]	<b>155 [61]</b>	<b>175 [69]</b>	<b>200 [79]</b>
Overall width	cm [inch]	167 [66]	190 [75]	215 [85]
Depth · transport	cm [inch]	170 [67]	190 [75]	190 [75]
Height	cm [inch]	105 [41]	105 [41]	105 [41]
Weight · base value	kg [lbs]	600 [1,320]	650 [1,430]	695 [1,530]
Belts	qty	3	4	4
Flails	qty	15	18	21
Y flails	qty	27	33	39
Tractor weight	kg	1.930 [4,255]	2.250 [4,960]	2.350 [5,180]
Nominal Power	HP	50-65	60-90	70-90

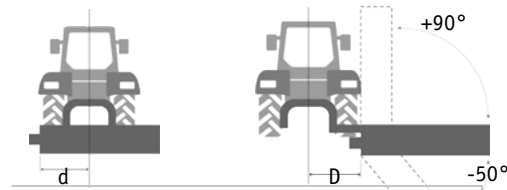
## Tools



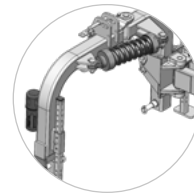
SMWA avs · features

Robust chassis made of high tensile steel.

S420



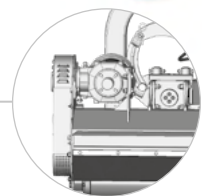
Hydraulic side shift  
 D= up to 84 cm [33 inch]  
 with optional external gear up to 136 cm [54 inch]  
 d= 68 cm [27 inch]  
 or 42 cm [17 inch] with external gear  
 The boom can be angled 90 ° upwards  
 and tilted 50 ° downwards



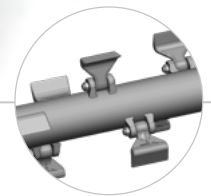
Safety breakaway to prevent  
 breakage of the linkage.  
 Articulated attachment frame  
 allows dynamic flexation (option)  
**FLEX-SAFE**



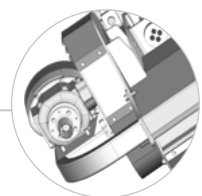
Two floating positions  
 - Vertical floating up/down  
 - Floating of the mulching head (tilt)  
**FLOAT**



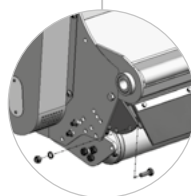
Gearbox inside machine keeps  
 the mower close to the tractor  
 (appropriate e.g. for orchard rows)



Standard rotor  
 with SMW flails



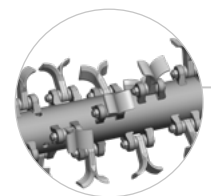
External gearbox  
 allows large outrigging  
 (option for 175-200 cm)



Adjustable hood  
 to set the degree of  
 mulching  
**M-FLAP**



Tempered counter  
 cutters for a perfect  
 mulching result  
**2 COUNTER CUTTERS**



Optional rotor  
 with Y flails  
**HELIX ROTOR**