

## ANGLES



## MOON PHASES



**Full Moon**



**Waning  
Crescent**



**Half Moon**



## WANING CRESCENT COLOR MELT

BEGIN BY TAKING  
6 HALF-MOON SECTIONS

**MOVEMENT:**

- Apply color to base
- Comb color down blend/blur to cusp of zone 2
- Lay foil and color



Sections 4 & 5 drop perimeter. Take a thicker section fine weave. This creates natural teasy light.

U-shape sections allow you to work with the natural curve of the head, thus eliminating extra partings.

**TWIST CANVAS TO THE LEFT & RIGHT TO HUG AREAS:**

- Parietal ridge
- Deep temple
- High crown



## **FRONT - ANGLE 180° TABLETOP**

When applying new growth color, implement sweeping motion.  
Leave perimeter out.

\*Note the areas on the sides have naturally been colored because of our half-moon sections.

# COLOR CANVAS SYSTEMS®

COLOR CANVAS SYSTEMS® ALLOWS YOU TO WORK NATURALLY WITH THE CURVE OF THE HEAD. OUR HALF-MOON SECTIONS ALLOW YOU TO ACHIEVE BLENDED COLOR ALL WHILE WORKING EFFICIENTLY.

## WANING CRESCENT COLOR MELT



## 6 HALF-MOON SECTIONS



## 6 HALF-MOON SECTIONS



# COLOR CANVAS SYSTEMS® OXOX

AFTER SECTIONS 1-5 ARE APPLIED SECTION 6 IS SPLIT DOWN THE MIDDLE, PERIMETER WOVEN OUT, AND TWO TRIANGLE SECTIONS CARVED ON TEMPLES.

**FULL MOON SECTION**



**SECTION 5 & 6**



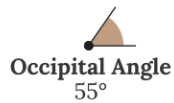
**NAPE ANGLE - 45° PITCH**



# COLOR CANVAS SYSTEMS®

AFTER SECTIONS 1-5 ARE APPLIED SECTION 6 IS SPLIT DOWN THE MIDDLE, PERIMETER WOVEN OUT, AND TWO TRIANGLE SECTIONS CARVED ON TEMPLES.

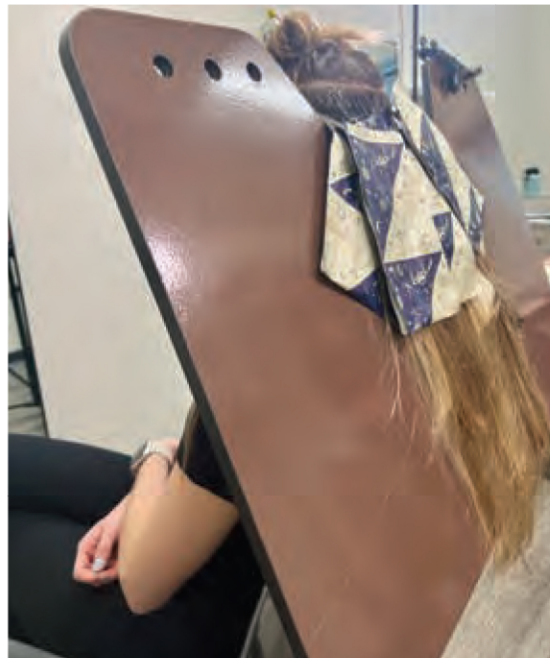
## SECTION 3 OCCIPITAL ANGLE - 55°



## SECTION 5 CCS MAX CAPACITY ANGLE - 70°



## SECTION LOW 6 CCS MAX CAPACITY ANGLE - 70°



ADJUST CHAIR FOR DESIRED HEIGHT & COMFORT. THIS IS DONE TYPICALLY BY LOWERING THE HYDRAULIC, OR ELEVATING THE HEIGHT OF CANVAS BY ADJUSTING THE STEM.

**SECTION LOW 6**

Note: You will begin to decrease your CCS Pitch after color has been applied to crown.



**High Crown Angle** CCS Pitch 70°  
**Top or Mohawk Area** CCS Pitch 65°  
**Around Face** CCS Pitch 180° (Tabletop)

**AROUND FACE - TABLETOP 180°**



This allows for tools to be placed on top of the canvas as it hovers over your (more comfortable) guest, allowing you to work work in front of your guest and avoid uncomfortable lunging.




Drop hairline and create two triangle sections.



B E F O R E



  
OXOX  
A F T E R