

# Fuel Tank Storage Solutions

Proud Level 3 B-BBEE Contributor



## SIYATHEMBANA

Leading Suppliers of Self Bunded Tank Tainers

Since 2011

Pioneers of:



Above Ground Tanks

Fuel Farms

Turnkey Solutions

Design & Engineering

Mobile Pump Houses

Lubrication Storage

Installation & Commissioning

1000 - 2M Capacity

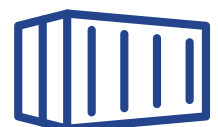
Interconnected

ISO Certified

Standard ISO  
Footprint

Delivered Anywhere

[WWW.SELFBUNDEDTANKS.COM](http://WWW.SELFBUNDEDTANKS.COM)





Est. 2011

# SIYATHEMBANA

Leading Suppliers of Self Bunded Tank Tainers



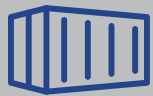
**ISO 9001:2015**

## SC Tank Range



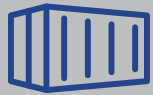
### SC12 Tank

L: 2991mm H: 2896mm  
W: 2438mm  
Kg: 4300 (tare)  
Max Fill Vol: 12 560L



### SC 31 Tank

L: 6058mm H: 2896mm  
W: 2438mm  
Kg: 6950 (tare)  
Max Fill Vol: 32 400L



### SC 67 Tank

L: 12 192mm H: 2591mm  
W: 2438mm  
Kg: 11 640 (tare)  
Max Fill Vol: 61 700L



### SC 75 Tank

L: 12 192mm H: 2591mm  
W: 2438mm  
Kg: 11 640 (tare)  
Max Fill Vol: 75 300L



### Tank Farms

Interlinked Tanks  
Up to 2M Litre Capacity  
Optional:  
Lighting | Walkways  
Pumping Facilities





Est. 2011

# SIYATHEMBANA

Leading Suppliers of Self Bunded Tank Tainers



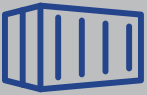
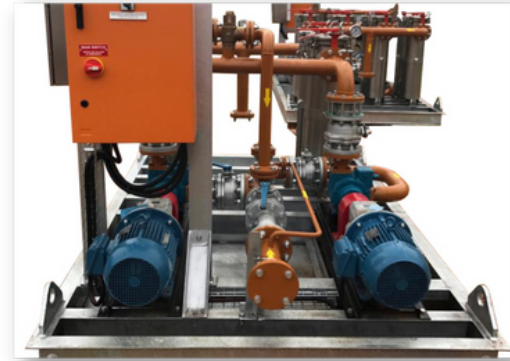
ISO 9001:2015

## Custom Solutions



### Pump Skids

Duty & standby pump assemblies, with filtration, skid mounted for added stability and durability. Electrical control



### Tank Pump Bay

Delivery and dispensing pump solutions including flow meters, filtration and electrical control. Secure, lockable pump bays perfect for remote sites and multiple flow rate requirements.



### Lubricant Solutions

Lube dispensing points for maintenance workshops or mobile service trucks. Metering and filtration options available too.



### Mobile Pump House

Lube dispensing points for maintenance workshops or mobile service trucks. Metering and filtration options available too.





## Key Specifications



Manufactured from CORTEN Steel  
(BS700MC/FQ5.0)

Tanks are Self Bunded/Double Walled

Designed to fit on standard Container  
Footprints

Quality tested before leaving QHC's Factory in  
Qingdao in China

Vacuum tested on arrival in South Africa

Tanks primed and painted with Hempel  
Hempadur 15560 Primer and Hempel  
Hempathane 55100 Paint Coating

Container corner locks fitted as standard

Tanker hose filler provided with Dust Cover  
Protection

Anti Syphon Valve standard

Overfill Protection + Mechanical Shutoff and  
Alarm

Permanent ladder and platform for safe access

Pressure/Vacuum Vent in compartment  
containment

Interstitial space integrity management  
system utilising dipstick

Pump Bay Housing

Breather Vents supplied, with dust filter fitted  
Dipstick, Dip Point and Cap provided

Security Doors and Locks

Statutory Signage applied

Designed and manufactured in accordance  
with Underwriters Laboratories standard UL  
142 (USA)

5 Year Warranty on Steel Structure of tanks + 3  
Year Warranty on paint

ISO9001 Certified Quality Management System  
in place

**Standard ISO Container footprint**

**Self Bunded - no need to construct costly containment bund walls**

**Rapid Deployment versus conventional builds**

**Structure and Paint finish Warrantees**

**Multiple capacities to suit your requirements today and in the future**

**Single Project Management Team**

**Fabricated OFF YOUR SITE - LOWER HSSE Risk**

**Modular - can be interconnected/disconnected as your needs change**

**Ensuring clean fuels - pump redundancy - custom flow rates**