



## JOB DESCRIPTION

# RULING ELDER FOR MISSION

### **Commission**

Trust in Jesus Christ as Savior, acknowledge him Lord of all and Head of the Church, and through him believe in one God, Father, Son, and Holy Spirit.

Accept the Scriptures of the Old and New Testament to be, by the Holy Spirit, the unique and authoritative witness to Jesus Christ in the Church universal and God's Word to you.

Sincerely receive and adopt the essential tenets of the Reformed faith as expressed in the confessions of our church as authentic and reliable expositions of what Scriptures lead us to believe and do, and be instructed and led by those confessions as you lead the people of God.

Demonstrate obedience to Jesus Christ, under the authority of Scripture, and be continually guided by our confessions.

Seek to follow the Lord Jesus Christ, love your neighbors, and work for the reconciliation of the world.

Further the peace, unity, and purity of the church.

Pray for and seek to serve the people with energy, intelligence, imagination, and love.

Be faithful in watching over the people, provide for their worship, nurture, and service. Share in government and discipline, serve in councils of the church and show the love and justice of Jesus Christ.

### **Qualities of a Ruling Elder for Mission**

Ruling Elders demonstrate wisdom; maturity of faith; demonstrated leadership skills; and compassion.

Demonstrate gifts for pastoral care and ministries of compassion.

**Inspire members of the congregation to discern their gifts for mission, connecting and equipping those experiencing a call to service.**

**Know God to be a *sending* God of love and justice, and are intentional about following God's Spirit wherever it leads.**

**Commit to leading by example (“...living God's love in the way of Jesus Christ...”) however that needs to occur, through the local, national and international witness of FPCA.**

### **Mission Ministry Area Description**

To oversee the overall mission activities of the congregation, including interpretation, special offerings, opportunities for service (locally / nationally / internationally), covenant relationships, and appropriate areas of the benevolence budget.

### **Mission Ministry Team Descriptions**

#### *Greening Creation Ministry Team*

Staff Support: Pastor, Mission

Purpose: Through education and outreach, to: a) encourage each member of the congregation to acknowledge their role as stewards of God's creation; and b) suggest to leadership ways to model this stewardship through environmentally sound facilities decisions.

#### *Refugee Ministry Team*

Staff Support: Associate, Urban Ministry

Purpose: To “welcome the stranger” by helping all refugees, regardless of nationality or religion, providing the life skills, resources and advocacy necessary to achieve a path to self-sufficiency.

#### *Arabic Ministry Team*

Staff Support: Commissioned Lay Pastor for Arabic Ministry

Purpose: To provide spiritual opportunities and social service assistance to Middle Eastern immigrants to the Lehigh Valley; to interpret Middle Eastern heritage and customs to the congregation and community, while fostering an understanding and respect of diverse religious traditions.

#### *Justice, Peace, and International Missionaries Team*

Staff Support: Pastor, Mission

Purpose: To claim the prophets' call to be a visible witness in society – locally and globally – providing opportunities to witness to God's intention for a just, peaceful and compassionate world.

#### *National and International Team*

Staff Support: Pastor, Mission

Purpose: To address human need and build relationships across denominational lines, state lines, and international borders – through partnerships with denominational and non-denominational organizations, and covenant partners.

*Local Care Team*

Staff Support: Associate, Urban Ministry

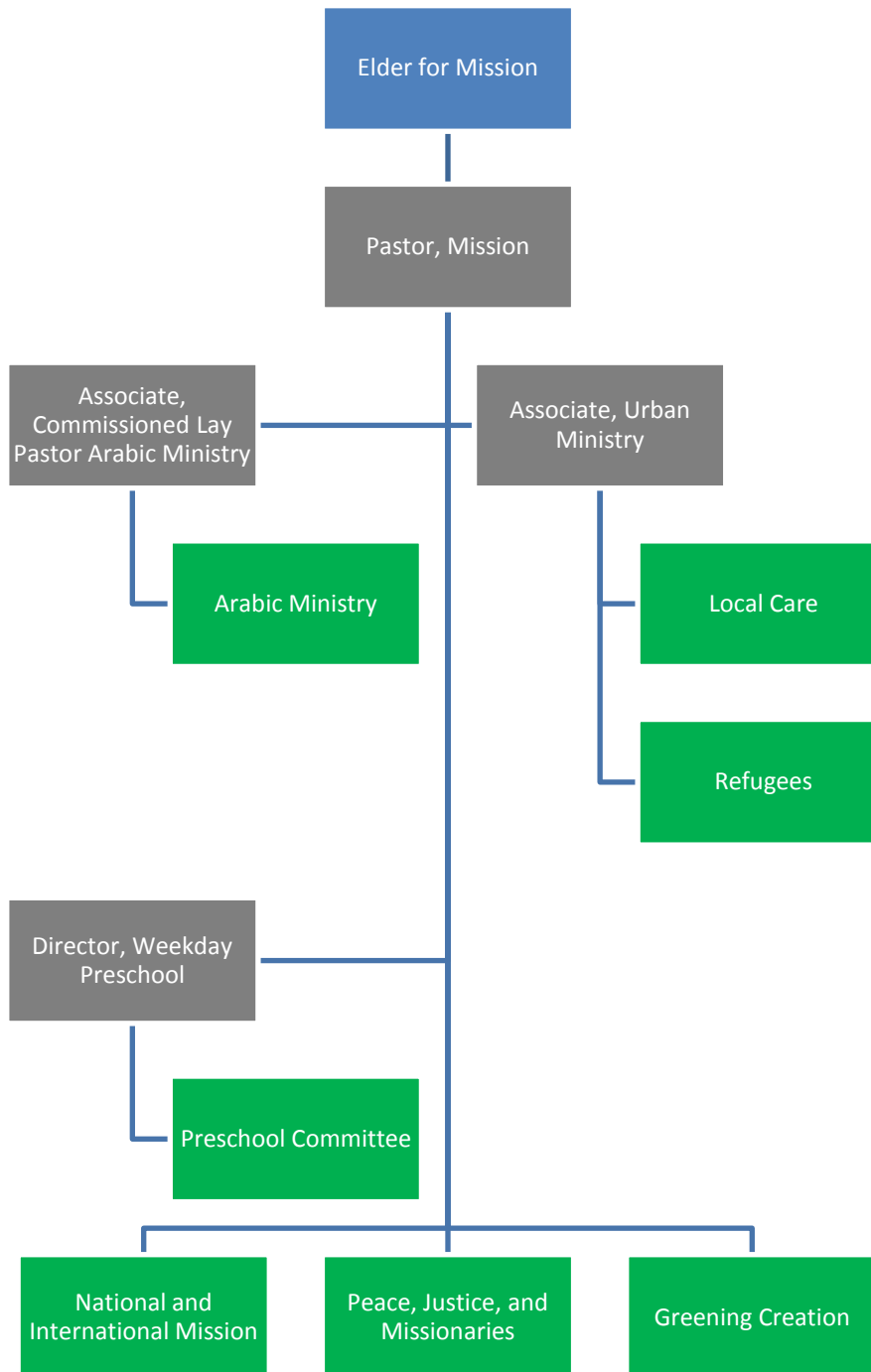
Purpose: To support the needs of urban schools, at-risk youth, the hungry, homeless, mentally challenged, and others whom we are called to love after the example of Christ. To advocate for systems and structures which demonstrate God's justice for all people.

*Weekly Preschool Team*

Staff Support: Director, Weekday Preschool

Purpose: To provide a nurturing early childhood education program which encourages social, physical, emotional, and cognitive development, while promoting Christian values of love, self-esteem, and respect for others.

**Mission Ministry Leadership**



### **Critical Tasks for the Position of Ruling Elder for Mission Ministry Area**

1. Attend and participate in meetings of the Session (one per month); not missing more than three (3) meetings in a calendar year.
2. Be an advocate and ambassador of the mission of FPCA to the Mission Ministry Team
3. Spiritually guide, resource, and encourage the Pastor for Mission.
4. Be prepared to lead discussions on relevant issues related to Mission.

5. Be prepared to discuss reports/requests submitted to the Session on behalf of the Mission Staff or Mission Ministry Area.

### **Time Commitment**

*Three-year term; year begins May 1 and ends April 30; with a possibility of serving a second, three-year term.*

Monthly Session meeting (2.5 hours per month)

Meetings with Pastor for Mission (3 hours per month)

Quarterly meetings for spiritual encouragement and leadership reflection with Lead Pastor (.5 hours per month)

Mission Ministry Leadership Meetings (2 hours per month)

Miscellaneous – worship leadership, emails, phone calls, contacts, additional meetings, off campus ministry etc. (4 hours per month)

*Total Approximate Time Commitment: 12 hours per month*