



# JOB DESCRIPTION

## **RULING ELDER FOR WORSHIP AND CREATIVE ARTS**

### **Commission**

Trust in the Jesus Christ as Savior, acknowledge him Lord of all and Head of the Church, and through him believe in one God, Father, Son, and Holy Spirit.

Accept the Scriptures of the Old and New Testament to be, by the Holy Spirit, the unique and authoritative witness to Jesus Christ in the Church universal and God's Word to you.

Sincerely receive and adopt the essential tenants of the Reformed faith as expressed in the confessions of our church as authentic and reliable expositions of what Scriptures lead us to believe and do, and be instructed and led by those confessions as you lead the people of God.

Demonstrate obedience to Jesus Christ, under the authority of Scripture, and be continually guided by our confessions.

Seek to follow the Lord Jesus Christ, love your neighbors, and work for the reconciliation of the world.

Further the peace, unity, and purity of the church.

Pray for and seek to serve the people with energy, intelligence, imagination, and love.

Be faithful in watching over the people, provide for their worship, nurture, and service. Share in government and discipline, serve in councils of the church and show the love and justice of Jesus Christ.

### **Qualities of a Ruling Elder for Worship and Creative Arts**

Ruling Elders demonstrate wisdom; maturity of faith; demonstrated leadership skills; and compassion.

Affirms the plurality of our worship platforms and seeks to encourage a diversity of excellent offerings of worship.

Creative vision for new forms of worship expression through music, the arts, spoken word, and liturgical elements.

### **Worship and Creative Arts Ministry Area Description**

To create an environment of Christ-centered worship where people encounter the living God in multiple platforms and styles, through dynamic and excellent artistry and Spirit-filled Word.

### **Worship and Creative Arts Ministry Team Descriptions**

#### *Traditional Worship*

Staff Support: Director, Traditional Worship

Purpose: To vision and create an inviting traditional worship experience that encourages participation, invites physical expression and reaches people in a way that is unique to this church, utilizing modern *and* historical music and art forms that reflect the heart of First Presbyterian Church of Allentown

#### *Alternative Worship*

Staff Support: Director, Alternative Worship

Purpose: To vision and create an inviting alternative worship experience that encourages participation, invites physical expression and reaches people in a way that is unique to this church, utilizing modern *and* historical music and art forms that reflect the heart of First Presbyterian Church of Allentown.

#### *Arabic Worship*

Staff Support: Associate, Commissioned Lay Pastor, Arabic Worship

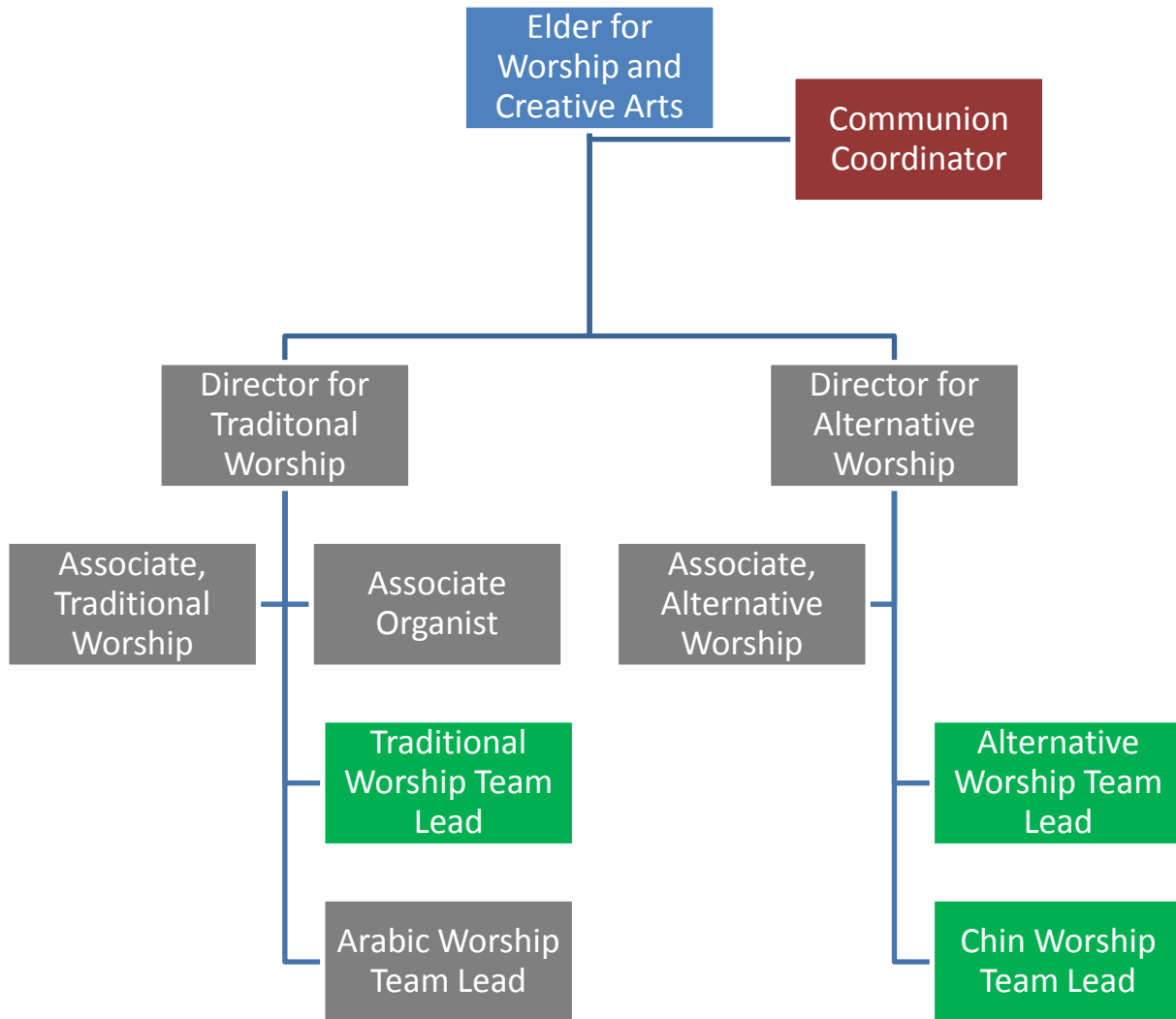
Purpose: To vision and create an inviting Arabic language worship experience that encourages participation, invites physical expression and reaches people in a way that is unique to this church, utilizing modern *and* historical music and art forms that reflect the heart of First Presbyterian Church of Allentown

#### *Chin Worship*

Staff Support: Director, Alternative Worship

Purpose: To vision and create an inviting Chin language worship experience that encourages participation, invites physical expression and reaches people in a way that is unique to this church, utilizing modern *and* historical music and art forms that reflect the heart of First Presbyterian Church of Allentown

## Worship and Creative Arts Ministry Leadership Matrix



### Critical Tasks for the Position of Ruling Elder for Worship and Creative Arts

1. Attend and participate in meetings of the Session (one per month); not missing more than three (3) meetings in a calendar year.
2. Be an advocate and ambassador of the mission of FPCA to Worship and Creative Arts leadership team.
3. Spiritually guide, resource, and encourage the Director for Alternative Worship and Director for Traditional Worship
4. Be prepared to lead discussions on relevant issues related to the Worship and Creative Arts Ministry at Session meetings.
5. Be prepared to discuss reports/requests submitted to the Session by the Worship and Creative Arts Ministry Lead

## **Time Commitment**

*Three-year term; year begins May 1 and ends April 30; with a possibility of serving a second, three-year term.*

Monthly Session meeting (2.5 hours per month) – 4<sup>th</sup> Wednesday of the month

Meetings with Director for Alternative Worship and Director for Traditional Worship (3 hours per month)

Meetings with Commissioned Lay Pastor for Arabic Ministry and Elder for Chin Worship (2 hours per month)

Quarterly meetings for spiritual encouragement and leadership reflection with Lead Pastor (.5 hours per month)

Miscellaneous – worship leadership, emails, phone calls, contacts, additional meetings, etc. (4 hours per month)

*Total Approximate Time Commitment: 14 hours per month*