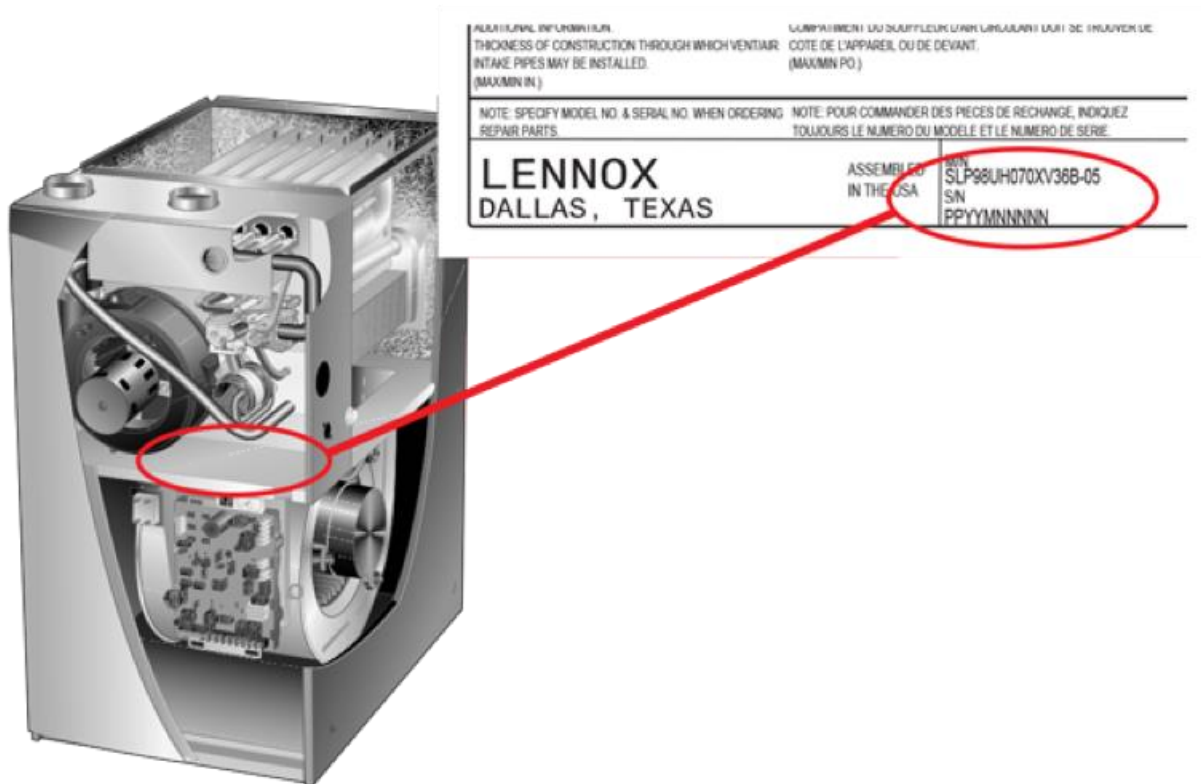


Where can I find the model and serial numbers for my furnace?

You can find the model and serial numbers (M/N and S/N) for your furnace by removing the top-front service panel and looking to the left side of the interior cabinet or the top of the blower deck, depending on whether your system is an 80% or 90% AFUE unit. Also, the orientation (horizontal or vertical) and flow direction (down or up) of your furnace may impact the location of the information.



Where can I find the model and serial numbers for my air conditioner?

The model and serial numbers for your cooling system can be found on the nameplate or sticker, located near the service panel. The nomenclature sticker should have a white background with black letters.



LENNOX		
DALLAS, TEXAS		
M/N XC14-048-230-01		
S/N 5807A00000		
CONTAINS R410A		DESIGN
FACTORY CHARGE		HI 4
10 LBS 0 OZS		LO 2
ELECTRICAL RATING		NOMINAL V
1 PH	60 HZ	MIN 197
COMPRESSOR		FAN
PH	1	PH
RLA	21.6	FLA
LRA	117	HP
MIN OLT. CAPACITY AMPERAGE MINIMUM		29.0
		MAX FUSE OR FUSIBLE LINK IN AC CIRCUIT PER IEC

Where can I find the model and serial numbers for my evaporator coil?

Your coil model and serial number are on the front of the coil box that sits above your furnace.

