

Let's get 'Chalking'

Issue 2, December '19

TO PAINT OR NOT TO PAINT?
Let's set the record straight
with Maria von Podewils

Learn **HOW TO**
create your own unique
CHRISTMAS WREATH

CHRISTMAS DECOR
Create your own quote sign

PRODUCT OF THE MONTH
Perfect to bring out the Christmas cheer
LIQUID METAL ARUBA



Step by step guide to using
EMBOSSING PASTE
by Ursula James – Disa Creative

SHOP TILL YOU DROP
Find a store near you in our
exclusive classified section

Proudly brought to you by
Granny B's Old Fashioned Paint





- 1** Ask the experts
- 3** Workshop Calender
- 5** What's New - Aruba and Bermuda
- 6** To Paint or Not to Paint
- 7** Featured Artist - Moms Old Couch
- 11** Christmas Decor - Quote Sign
- 14** How to use - Embossing Paste
- 15** How to Create - Christmas Wreath



Ask the Experts

Email us at letsgetchalkingmag@gmail.com or Post your Question to our Facebook group <https://web.facebook.com/groups/GBpaintstudio/> and tell us what you need to know about chalk paint / Paint Techniques.



What Makes a GOOD quality Chalk Paint

There is no shortage of chalk-based paint product available on the South African market. Offerings range from popular imported brands to local varieties of varying quality. The choice can be overwhelming, so we thought we would share a few pointers on choosing the brand that is right for you:

1. Low VOC's (Volatile Organic Compound) if you are working with a paint that has a distinctly chemical smell e.g. think of formaldehyde, then you are working with a paint that is prone to evaporation and is not ideal to work with in enclosed spaces, and is probably not 'kiddy-safe'
2. Number of coats - if you find yourself having to paint more than 2 coats (at the most) you are probably not working with the best quality you can buy, and perhaps spend a little more but get a paint that covers nicely and does not need as many coats.
3. Finish - if you find yourself having to apply all sorts of finishing products such as dark wax, lacquers, polishes just to try and turn a 'pink' into a 'red' - again consider shopping for a better quality product.
4. Price - manufacturing a good quality paint is not cheap, if something priced at a level that is too good to be true it might just be. Good quality paints provide consistency in colour, have a shelf-life of at least 6 to 12 months and can be easily stirred up if separation occurs.
5. Customer Care - choose a brand that is known for its after sales service, shares product tips is easy to get in touch with and provides you with round the clock advice and service.

Coming up



Tip: New brushes may lose a few bristles. Soak new brushes in water for a few hours. The wooden handle swells up and “catches and holds” the bristles and so prevents them from falling out. Always let brushes dry lying flat on a surface or hanging vertically down.

Write and WIN!

The winning question will win a Granny B's Started Pack Valued at R299



**'A GREAT ARTIST
CAN PAINT A
GREAT PICTURE ON
A SMALL CANVAS.'**

- CHARLES DUDLEY WARNER -



Coming up

To list your workshops or other paint related event email us on

letsgetchalking@gmail.com

All listings must be sent at least a month in advance.

December 2019

05, 9:00am - Pick-ur-Gift Christmas Workshop - Vanderbijlparl - Marne 082 923 4318

07, 9:00am - Pick-ur-Gift Christmas Workshop - Vanderbijlparl - Marne 082 923 4318

12, 9:00am - Pick-ur-Gift Christmas Workshop - Vanderbijlparl - Marne 082 923 4318

14, 9:00am - Pick-ur-Gift Christmas Workshop - Vanderbijlparl - Marne 082 923 4318

14, 9:00 am - Verf n Foto Raam met n verskil - Montana - Sonette 083 645 5408

14, 12:00 pm - Verf n Foto Raam met n verskil - Montana - Sonette 083 645 5408



January 2020

Keep an eye out on our Group for updated workshops in the events tab.

<https://web.facebook.com/groups/G-Bpaintstudio/>

February 2020

1, 10:00am - Mouldit Demonstration, Vanderbijlpark - Marne 082 9234318

8, 10:00am - Mouldit Demonstration, Centurion - Marne 082 9234318





THURSDAY, 19 DECEMBER 2019 / 18:00 - 21:00

CHEESE, WINE & CRAFTS

CREATE A PERSONALIZED GIFT THIS CHRISTMAS SEASON!
MAGNIFIQUE GIFTS HAS A VARIETY OF OPTIONS TO CHOOSE FROM.

REQUEST THE ACTIVITY LIST FOR ALL THE OPTIONS

FROM N\$300.00 PP

FOR BOOKINGS CALL 061 241 013 OR SEND AN
EMAIL TO CRAFT @GIFTS.COM.NA

Classes for December

Paint evenings

Tuesdays & Thursdays 18:00 - 21:00
3rd, 5th, 12 or 17 Dec

Own Project / Activity list

From N\$200pp



Art & Wine

Wednesday 18:30 - 21:00
4 Dec

Wine and included

N\$350pp



Appreciation Project Class

Saturday 09:00 - 12:00
07 Dec

350 mm Clock Hot Dog & Cool drink
Included. Larger Clocks available.

From
N\$395pp



Laundry Bin

Saturday 9:00 - 13:00
14 Dec

Refreshments included

N\$750pp



Project Class

Tuesday & Saturday 10:00 - 13:00
14 & 21 Dec

Project can be chosen from the
Activity list

from N\$200pp



Cheese & Wine

Thursday 18:00 - 21:00
19 Dec

Make a gift class

from N\$300pp



If you are interested in any of the classes, please don't hesitate to request for all the information and the full advert.
Request activity list to see all the project options.

Whats New

Our must have Liquid Metal for your Xmas decor is here!



Our Liquid Metal is a water based, kiddy-safe, self-sealing true metallic formulation.

Liquid Metal has excellent adhesion qualities. Liquid Metal will adhere to most other for glossy surfaces, de-gloss slightly as needed with light sanding or priming with a layer of Granny B's chalk-finish paint.

Priced at exactly the same price as all of our other LiquidMetals this one is a great addition to your range, particularly for Xmas decoration craft and seasonal projects.



Bermuda is a beautiful shapeshifting Blue, as the viewing angle changes so does the colour.



Directions:

- Stir bottle well, a silicone brush or sponge brush can be used to apply product
- The finished product will create a metallic, non porous satin finish.
- Clean your equipment with clean soapy water
- Please remember to seal paint container as air will dry-out the product
- Allow about 60 minutes between coats and up to 2 hours to completely dry

Liquid Metal is a gel based product and if you find it a little too thick simply add some distilled water to thin it out.

TO PAINT –OR- NOT TO PAINT WOOD FURNITURE

Want to know the real truth about painting wood furniture it's not the end of the world! It's only paint and it can be stripped years from now if you'd like to. If you want to do something to it, do it, you're not lowering the value, you're making it more useful for you by breathing new life into them!

If ever you are offered a piece, take it! Keep passing it down, especially those family pieces that are special and have a lot of history. I am sure that the loved ones who have passed on would be pleased to know you have kept their pieces and love them even more by updating them. And it would make them happy to know that you think of them each time you use their pieces too.

Homemade with Heart thrives to leave a legacy of art to pass on without leaving a toxic mess in our environment! Here it's all about contributing to pollution by only using 'Go Green' products and by up-cycling/recycling furniture & saving it from the landfill. Hence our choice to only use Granny B's products when it comes to dressing up our orphans. It is completely water based and 100% solvent free it's low in odour, nontoxic, completely lead free and has low levels of VOC's (volatile organic chemicals)!

A word of warning though Granny B's is highly addictive and can cause you to save time and money in the pursuit of beautifying your home!

Reclaim, repurpose and recycling is our lifestyle why not make it yours too! Be kind to the earth & choose a 'go green' lifestyle!

Your life is a canvas, make sure you paint yourself a whole lot of colourful days!
xxx Maria xxx

TO PAINT OR Not TO PAINT?



Your life is a
canvas...make sure
you paint yourself
a whole lot of
colorful days.



Featured Artist

My name is Leigh Madeley, I am a wife and mom to two teenage daughters, 3 cats and 3 dogs. I am the owner of 'Mom's Old Couch' an upcycling and decorating business that I operate from my home near Hillcrest in Kwa Zulu Natal. My family, my pets and my home are my real passion although I love reading, baking, wildlife and the bush. Born in Pretoria, my family moved to Durban when I was very young and I have lived in this beautiful province ever since.

When I was a teenager and modelling I became very interested in fashion and wanted to study either marketing or fashion buying. However having both parents in business fields, I was encouraged to rather study C.I.S. at Technikon Natal (now known as Durban University of Technology) and qualified as an accountant in the early 90's. I worked in different fields in taxation and horse racing management for over 20 years and have run my own successful horse racing administration business for the last 8 years.

I have always had a creative streak, but after having my confidence knocked by an Art teacher in high school, I was left with the belief that I was no good as an artist. I have also suffered from depression and anxiety since adolescence and last year while in therapy, I asked my psychologist a question. "Why is it that when I am going through depression that my creative side always comes knocking on the door?" She told me "Stop ignoring it and do something about it!" My first project grew from a desire to redecorate an old pine cupboard in my house and I started painting. It not only helped with my mental health but ignited a passion for restoring, renewing and giving all the pieces of furniture in my house a makeover using chalk paint! The bug had bitten and the discovery of my creative niche and my business 'Mom's Old Couch' was born. My business has grown from strength to strength, with more exciting prospects on the horizon and in November we will be a year old. I have also started giving lessons to other "wannabe" furniture artists. I believe that everyone has a creative side and I delight in seeing my pupils flourish.



I started off painting quite conservatively with a lot of neutral colours and pastels. I was then approached by Gerald Terblanche of Granny B Paints to hold chalk painting workshops in Durban. I discovered the vast variety of colours Granny B has to offer. This encouraged me to step out of my comfort zone and I went exploring with bolder and brighter colours. My preferred style is rustic with a distinct farmhouse flavour, but I find myself being drawn into other styles such as "shabby chic", depending on the piece I am working on and my mood.

Granny B's paint was a hit from day one! It is versatile and easy to use. I'm always excited to try their new products and I look forward to a continued partnership with them.



Being sponsored by Granny B to hold workshops was the validation that I needed that I was on the right path. My lows have been not having enough time to spend painting as I am still running two businesses. I have also struggled at times with the notion of following my heart and to not be ruled by my head.



I'm inspired by the colours I see in nature and am drawn to flowers particularly. Hence my choice of proteas as my business logo. The idea of turning a piece of furniture that has been discarded into something that can add value to one's home or garden, ignites my imagination. I love nothing better than to sit quietly in nature and let my thoughts take over. I am often so excited to get started on a piece that I forget to take a before picture to reflect on later. I find I don't always plan exactly what I'm going to do with a particular project but find it transforms and develops as I paint.

Pinterest has been a source of inspiration and I can get totally lost in time while exploring the internet for new ideas and techniques.

I find it amazing that my decorating has enabled me to see beauty in almost everything I look at. And of course when I enter a new space whether it be a local coffee shop or restaurant, the décor and furniture is now the first thing I notice.

BATHROOM MAKEOVER



Our family bathroom in my home was very dated, tiled in 1970s style blue tiles with plain white floor tiles and in desperate need of a makeover. With a limited budget and an idea I embarked on redecorating rather than retiling.

The porcelain wall tiles were thoroughly washed with soap and water and re-grouted where this was in poor condition.

Granny B's Daisy White was mixed with a 1/3 quantity of Armour sealer. (Matt finish)

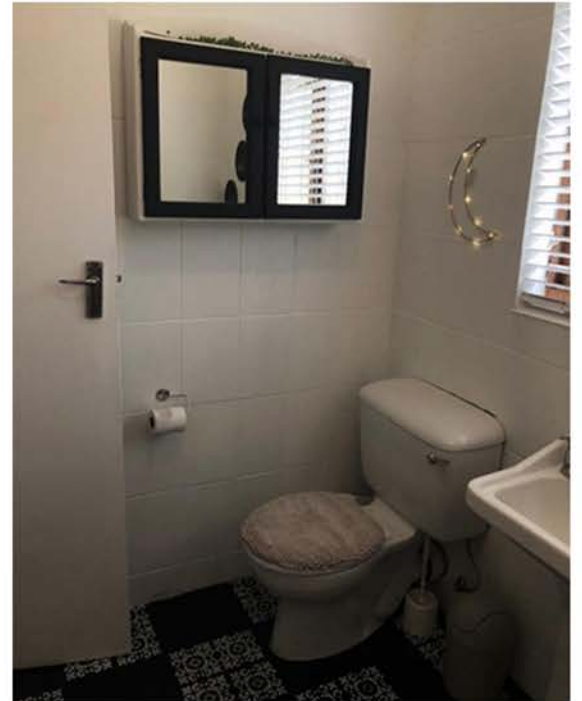
Because of the white on blue I had to apply another two coats of daisy white, this time without the Armour sealer. It is important to let the walls dry overnight between each coat. Two coats of Armour Seal were then applied to the walls which gives it a tough and beautiful finish.

The floor tiles were then scrubbed clean.

Wanting a strong contrast with the walls I applied two coats of Granny B's "Black Betty" paint to them, ensuring each coat was thoroughly dried before applying the next. The pattern was stencilled on to the tiles using Granny B's stencils and Daisy White paint. Important to note is that the stencil needs to be cleaned of excess paint regularly while working or the pattern will not be consistent.

Armour Gloss was used to finish the floor. Two coats were applied.

The wall decorations consisted of MDF board cut into discs and spray-painted with chalk-board paint. I planted succulents in plastic pots which I spray painted gold. My Oregon bathroom cabinet and old shelves were painted black and daisy white as well.





**'All you need to
paint is a few tools,
a little instruction,
and a vision in your
mind.'**

- Bob Ross -



CHRISTMAS DECOR

Create your own quote sign



Distressed Candle Wax Paste Project

Christmas time is here! Cute Christmas hat project which is easy enough for beginners. This Christmas themed quote sign will add the festive cheer to any beach house this holiday.

Ursula James - Disa Creative,
Aussenkehr, Namibia



Email: ouzou@iway.na
Facebook page:
www.facebook.com/AussenkehrShop

Instructions

MATERIALS:

- Supa-wood A3 size board
- Granny B's Old Fashioned Paint
- White Candle
- Armour (Varnish / Sealant)
- Masking Tape
- Stencils
- Stencil Brush
- Paint Brush
- Plaster Pallet

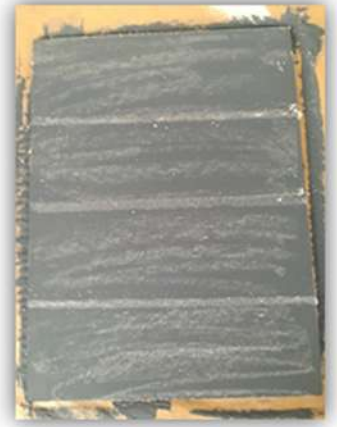
1. Paint the entire board with Midnight Blue. Once it has dried, take a piece of pallet wood and measure out pallet strips. Draw lines by firmly rubbing your candle over the measured out lines.

Verf die hele bord met Midnight Blue. Sodra dit droog is, meen 'n stuk palethout en meet paletstroke uit.

Trek lyne deur jou kers stewig oor die afgemete lyne te trek.

2. Turn candle horizontal and lightly rub it over some parts of the surface between your clearly marked lines to create a worn look. The candle wax is going to resist the second paint layer in those places and the paint will come right off

Draai kers horisontaal en vryf dit liggies oor sommige dele van die oppervlak tussen u duidelik gemerkte lyne om 'n verslete voorkoms te gee. Die kerswas sal die tweede verflaag op hierdie plekke weerstaan en die verf sal dadelik afkom as u dit begin afskraap.



3. Paint the entire surface with two different colors which is in contrast with your base coat to create a stripe look using your marked lines as indication. Leave to complete dry. Verf die hele oppervlak met twee verskillende kleure wat in kontras is met basislaag om 'n streep voorkoms te skep en gebruik gemerkte lyne as aanduiding. Los tot heel droog.



4. Start distressing with a plaster pallet to remove second layer of paint to create weathered look by holding pallet at a 45 degrees angle. Lines with firmly rubbed action will be more visible than lightly rubbed areas since paint come off easier on those areas. Hint: Once most of candle wax have been removed with plaster pallet you can further destress the surface by sanding it. By removing the most candle wax first

with plaster pallet you will prevent your sanding paper getting all cloth up due the waxy residue. Begin om die tweede laag verf te verwyder met 'n pleister pallet om verweerde voorkoms te skep deur die pallet 45 grade vas te hou. Lyne wat met stewige hale getrek sal duideliker sigbaarder wees as liggies gevryf gebiede aangesien verf makliker op daardie areas afgaan.



Wenk: Sodra die meeste kerswas met pleister pallet verwyder is, kan die oppervlak verder afgeskuur word deur dit te skuur met skuurpapier om verweerde voorkom net te bevorder. Deur meeste kerswas eers met pallet te verwyder, voorkom dat skuurpapier van die was aangepak raak en nie wil skuur nie.

5. Use different stencils to create a unique layout. Move stencil around to fill the whole surface. Make use of layering and different colors while stenciling to create depth. Make sure paint is dry before stenciling over another stenciled area.

Gebruik verskillende stensils om 'n unieke uitleg te skep. Beweeg stensil om die hele oppervlak te vul. Maak gebruik van lae en verskillende kleure terwyl stensil om diepte te skep. Maak seker dat die verf droog is voordat oor 'n ander stensilde area stensil.



6. Once stencil work are completed and dry. Use a thin paint brush to add the cute little red Christmas hats for that festive vibe to your work.

Sodra die stensilwerk voltooid en droog is. Gebruik 'n dun verfkwas om die oulike rooi Kersfeeshoedjies vir daardie feestelike gevoel by jou werk te voeg.



Remember - stencilling is a "dry" brush technique. The most common mistake is overloading your brush. It is much better to build up the colour gradually, layer by layer, instead of one thick paint application. Too much paint on the brush causes blotchy designs. Always dip only the bristle tip in the paint and dab it on a clean plastic plate to remove any excess paint to prevent bleeding. Apply the brush to the stencil in a dabbing motion. A bit like a Woodpecker! Keep the brush upright and at 90 degrees to the stencil at all times - this is more effective than stroking. Concentrate on filling in all the cut parts of the stencil. Only reload the stencil brush when no more paint is available. Rather use paint on plastic plate to reload paint on bristle instead of dipping your bristle in the paint again to avoid that paint seep behind the stencil.

7. Seal your unique quote sign with Armour once everything is thoroughly dry. Verseël jou unieke aanhalings bordjie met Armor sodra alles deeglik droog is.

How to use Embossing Paste

Embossing Paste has been part of the Granny B's Old Fashioned Paint range for some time, but now comes in a brand new air tight container to prevent it from drying out so fast.

Embossing Paste is great for adding extra depth, raised (embossed) effect, texture to your project or get a 3D stencil effect. It is ready to use straight out of the container. Embossing Paste has the perfect consistency to apply using a stencil, it really holds its shape and dries rock hard.

You can add paint to it while still wet or simply paint over it once dried to create a stunning raised contrast. Once dried you can even sand it to get a smooth look and feel.



Before you start using it with a stencil, ensure that the stencil stays in position using painter's tape or masking tape. To apply the Embossing Paste you add a reasonable amount to a paint scraper, old credit card or artist pallet. Use a bit of pressure and smear over the stencil until the entire design has been covered. Scrape excess Embossing Paste off and make sure your paste is level with the edges of the stencil for a smooth and neat look.

For the 3D stencil effect – once you are happy with the coverage of your stencil design, use your finger to simply add some Granny B's Old Fashioned Paint to your Embossing Paste over the parts where you want some colour. Work fast since the Embossing Paste dries fast. Gently remove the masking tape while holding the design in place, take care that it does not to move as it will smear and smudge the design. See the 3D effect reveal itself



2. It dries to a pure white rock-hard surface which can be sanded until smooth once dried.
3. Simply paint over it to get a beautiful raised effect. For de-stressed effect you can sand the paint on the dried Embossing paste once the paint is dried. Or you can leave it unpainted in its original pure white colour for a dramatic look.
4. Always wash your stencils and equipment used in warm soapy water while the Embossing Paste is still wet.

Useful Hint: Embossing Paste can be added on any project to create texture since it exhibits excellent adhesion to all porous surfaces. It will even stick to plastic if you just give it a gentle sand before adding the Embossing Paste. Embossing paste is very versatile and smearing it into a stencil is not the only way to use Embossing Paste. By dry brushing over the dry Embossing Paste you highlight the raised effect or the texture added to your project.



DIY CHRISTMASTWREATH

Deur Marlene Kruger : PHOTOS: Marlene Kruger

One of the great things about mouldit silicon mould is their versatility! You can make Christmas ornaments and furniture embellishments all with a small selection of moulds and some clay.



Shopping List

- * mouldit silicon moulds (www.mouldit.co.za)
- * DAS Airdry Clay
- * Various Brushes
- * Granny B old fashioned paint (various colours)
- * Papa G gilders paste
- * Superglue
- * rolling pin



Choose your desired mould. Begin by pressing your DAS airdry clay into your mould, make sure it is soft and pliable, this way it is easier to reach all the detail inside the mould.

I use a rolling pin to flatten across the top of the mould to level out the clay, but you could also use a putty knife or old credit card or anything stiff and straight. If you are using DAS clay you don't need to prime the moulds with anything, however should you be using DALA airdry clay I suggest priming your mould with a light dusting of oil, which will help release the clay a little easier. The nature of paper clay causes it to crack when it dried. It adds to the character of the pieces. If you're looking for a more detailed look, I suggest you try casting stone, however you will not have any flexibility using this method.

I've found that superglue works well when gluing embellishment in place. It grips almost immediately and dries quickly.

Once all your embellishment are glued in place and the glue is set, it is time to paint!



Start by painting your darkest colour (Gl Jane) on all your rock roses, once they are dry you can start selecting various rock roses and paint some lighter and darker as you go. Also dry brush some of the tips with a lighter color to add some definition.

I used the following colours :

GI Jane

Teacup Green

Poisen Ivy

Chocolate

Vanilla Cream



NOTES:

If you have a design that you will be adding onto furniture that has a flat surface, you can lay-out your design on tinfoil and a baking tray. Put it in your oven while your oven is still cold, turn your oven temp on to 50degrees. Once it reaches

LGC Classifieds

Gauteng

The Village Craft Market
Douglasdale
Alan 011 704 6971

Paintwise Paints
Moreletapark
012 998 3493

Fir Furniture
Boksburg
Kenneth 011 917 0028

Fir Furniture
Meadowdale
Kenneth 011 453 7685

Fir Furniture Stoneridge
Edenvale
Kenneth 071 641 4899

Lifestyle Garden Centre
Randburg
Maggy 0117925616

Universal Paint Princess Crossing
Roodepoort
Shawn 0117681227

Paintwise Paints
Centurion
012 653 5206

Die Raamwinkel @ The Collection
Garsfontein
Belinda 0827865094

Garden Shop Menlo Park
0124605137

Pietria Hardware Meyerton
Pieter 0163620038

Universal Paint Centurion
Sean 012661055

Paintsmith On Jean Centurion
0875874093

WH Hardware Brakpan
Wayne 011 7409 163

Mica Paint Centre
Northriding
Pauly 011 794 3673

Jack's Paint
Melville
Ettiene / Loraine 011 482 3137

Kungwini Mica
Bronkhorstspuit
Martin 013 932 3129

Mari'a Belle
Krugersdorp
Ria/Mari 082 297 8501

MosMooi Decor
Centurion
Jeanne 084 941 3217

Jack's Paint
Montana Pretoria
Melanie 012 548 7874

A2Z Paint / Zanda and Zenith Paint
Pretoria North
Emmanuel 0677693287

Essential Hardware Mall @55
Centurion
Jamal 01200407501

Pottery Junction
Edenvale / Dowerglen
Rosie 011 453 2721

The Seedpod
Fourways - Broadacres
Jill 0114650375

Touch Wood Furniture
Primrose Cizanne 011 828 3619

The Vintage Corner
Vereeniging
Chane 016 423 4405

Jack's Paint
Northmead Square
Gino / Jenny 011 425 6853

Blessings In Bloom
Sinoville PTA
Esna 083 254 8094

Paint Emporium
Broadacres / Fourways
Gregory 011 465 0081



Submit a BRAND NEW listing email us on letsgetchalkingmag@gmail.com

Essential Hardware
Centurion / Midstream
Jamal 012 942 1001

Mega Mica Eastgate
Bedfordview
Riaan 011 616 4129

The Little Coffee Shop
Boksburg
Inge 011 917 1212

Fine Furnishers
Kempston Park
Morne 0119763306

Paint Emporium
Blackheath / Cresta
Ettiene / Morne 011 678 4848

Die Plaashek
Kromdraai Sterkfontein
Tania 083 564 9527

Rebel Paint & Hardware
Olivedale
Chris / Sarah 0117040180

The Garden Shop
Broadacres
Linsay 011 465 4216

Loelin's Arts and Crafts
Randfontein
Lindie 0116922449

Wanna Paint Pretoria North
Giesenburg Centre
Hennie 083 301 8737

Jack's Paint
Vanderbijlpark
George / Justin 016 981 9135

Chalk It Up With Jenni
Glenhazel
Jenni 0846047543

Colour Creations Paint & Hardware
Midrand
Paul Webb 0114660080

Jack's Paint
Bryanston Grosvenor Crossing
Jarid 010 599 0204

Events by Gabi Northriding
Gabriella 072 1302 916

Lavender & Lace Laser and Crafts
Centurion
Johan Pistorius 0828030126

DIY Depot
Kameeldrift
Heidi 012 547 1627

Just Different
Alberton (By appointment)
Yvette 083 2090 817

Jack's Paint
Randburg
Jarid 0114521817

Leroy Merlin / Adeo
Edenvale
Melashin 0104938000

Jack's Paint
Modderfontein / Edenvale
Jarid 0114521817

Chalk It Up
Cullinan
Anne-Marie 0824509652

Paint N Colour
Roodepoort
Christo 0117636135

Boskruin Mica Boskruin Tim
0117937377

Freestate
Benedictions
Bloemfontein
Amanda 0815474718

Blommies Pawnshop
Odendaalrus
Cindy 057 354 4500

Buildmat
Welkom
Francios 057 396 2149

Paris Antiques
Parys
Jason 082 655 5762

Du Plessis Meubels
Henneman
Teresa 057 573 3412

Ladybrand Mica
Jaco 051 924 0843

Nostalgia
Viljoenskroon
Liza 056 343 0073

Frank Korb Pharmacy
Riebeeckstad
Gerrie 0573881085

Jack's Paint
Parys
Lorraine 056 811 5070

Handi In DIY
Gardenia
Charl 0514463283

Handi In DIY Langenhoven
Bloemfontein
Charl 051 446 3283

Sommer Net Mooi
Fichardtpark Yolandi
0833001560

Blanche Gifts
Ficksburg
Anzelle 084 637 1680

Dulux
Senekal
Chanel / GJ Brits 076 399 7335

GK Art & Craft
Kroonstad Gladys
Amanda 0724435027

Kroon Glas
Reitz
Francious 727,990,405

Panorama Hardware
Frankfort
Lizete 058 813 2481

DIY Depot
Vredefort
Renchia 056 931 0172

Riemlander Trading Post
Heilbron
Lizane 072 523 8581

Solomons Mica
Bethlehem
Gerard 058 303 4930

Superstore DIY Depot
Koffiefontein 053 205 0470

Freestate Continued

U'neeque & Special
Bloemfontein
Amanda 076 224 8441

Koekeloer Koffie & Geskenke
Marquard
Karlien 083 306 2732

Kwazulu - Natal

Cheritta Stols
New Castle
083 463 0790

Craftmaestro
Shelly Beach
Karin 072 3100670

Craft Corner
Kloof
Bevan 0826595572

Tugela Apteek
Bergville
Suzette 036 448 1282

Mooi Loft
Mooi River
Francine 033 263 1590

Paint and Beyond
Hillcrest
Briget 0317651313

The Valley Hardware
Chasedene Pietermaritzburg
Mike / Tyler 033 342 0705

Biekie Van Als
Empangeni
Neelet Wessels 035 772 1361

Serendipity Framing Studio
Richards Bay
Dawie 035 789 0554

Halfway Trading Drummond,
Botha Hill
Cheralynne 0834637903

Homemade with Heart
Hibberdene
Maria 073 308 0081

Imagine That Arts
Umhlanga Ridge
Cecile 031 561 2018

Paint and Beyond
Umhlanga Ridge
Briget 0315617402

Back In Thyme
(Shongweni Farmers Craft)
Shongweni
Richard 082 455 1959

Back In Thyme
Assagay / Botha Hill
Richard 082 455 1959

Eastern Cape

Karoo Styl
Cradock
Rindi 082 651 1572

Usave Wholesavers
Jeffreysbay
0422933310

Vincent Hardware
East London
Warren 0437266779

WG Mica Hardware
Queenstown
Cassim 045 839 4144

Noom Coffee Shop and More
Grahamstown
Cindy 0832340420

Rolize Kreatief
Aliwal North
Rolize 082 876 1948

Arts and Crafts Goodies
Port Elizabeth
Johan 041 5813 888

Build It - Grahamstown
Philip 0466223158

Peace of Art
Port Elizabeth Walmer
Nelmarie 0827709994

Alley Art Studio
Port Elizabeth, Kamma Park
Lynnes 0662003028

A-Lie Bokness
Strand
Annelie 073 4823 650

In Die Hartjie
Middelburg
Anel 079 583 3699

Northern Cape

Le Chanz Materiale
De Aar
Marisan 083 409 1186

At The Studio / Lavendar & Lace
Kimberley
Cassie / Gale 0828397237

Blandior
Jan Kempdorp
Talana 073 1510 493

Dulux Paint Centre
Kathu
Lindi 053 723 1418

Kakamas Apteek
Kakamas
Mischane 054 431 0899

Vintalore Calvinia
Lizette Tredoux 083 404 5351

Oranje Mica
Upington
Suzzane 054 332 5010

Sean Blake Building Supplies
Kuruman
Sean 0537122096

Dagbreek
Griekwastad
Linda 083 447 5406

Sonetties
Calvinia
Sonet 083 532 6383

Kakams Mica
Kakamas
Suzanne 0544311814

Lavender & Lace
Kimberley
Gayle 053 832 7542

North West

Raamhoekie
Potchefstroom
Nicolene 018 297 3999

Stella's Creative Talents
Klerksdorp
Christel 083 286 8782

Burgers DIY
Vryburg
Carman 0539275616

The Paint Chix
Hartbeestpoort Dam
Lynda 0114939100

Avalanche
Mafikeng
Carol 018 381 0919
Rustenburg
Tersia 084 5104 426

Well - Design Interior and Gifts
Delareyville
Welmarie 0865672674

Tiekiedraai Padstal
Potchefstroom
Dawid / Amanda 0182911025

De Beer
Potchefstroom
Andre De Beer 082 461 5873

Werksmandjie
Sannieshof
Ria 0766393435

Dulux Paint Centre
Lichtenburg
Dirk / Werner 0183814748

Western Cape

Swartlandpale Garden & Décor
Okavango
Jeanne 0219818219

Houtkwas
Haartbeesfontein , Hopefield
Trudie 0837456446

Chalk and Cheese Paint Decor
Strand
Zelda 021 852 7456

Kreatief Skryfbehoeftes
Wellington Mariette 021 0200 264

Paintworld
Belville
Barry 021 914 7779

Lumber City
Clanwilliam
Adina 027 482 1514

Paintsmiths
Paarl
Elzette 021 871 1247

Village Paint & Hardware
Kuils River
Jayne 021 559 7788

Paintsmith
Longbeach Noordhoek
Mark 021 785 7269

Ronel Neethling Interiors
Montagu
Ronel 0236143199

Steyns Building Supplies
Stillbaai
Willem / Danie 028 754 1228

Midas Paintsmith
Bredasdorp
Stefan 0784241522

Sjiek my Shabby
Voorbaai
Amanda 083 273 9242

Koeleloor Geskenk Winkel
Pearly Beach
Nelia 028 381 9625

Pattekloof Spar
Pattekloof
Michel 021 911 1010

Paintsmiths Hermanus
Sand Baai industrial Hermanus
Johan Labuschagne 0283133745

Jack's Paint
George
Wiets 0448710400

LUV' IT
Malmesbury
Stefni 022 482 1216

Paintsmiths George
Desire 044871 1111

Artland
Claremont
Linda 021 671 6001
Do It Yourself Hardware
Brooklyn
Jacuelien 021 511 1839
BuildIT
Vredendal
Jo - Mari 027 2132 260

Cassies Workshop
Kirstenhof
Haylee 079 5327 999

Tina Warrington
Melkbostrand
Tina 072 902 0633

Snuffels Tweedenhandsemeu-
bels Hermanus
Johannes 072 868 8844

Décor Magic
Plettenberg Bay
Kimberley 0822196946

Marze Botha Gallery
Stellenbosch
Marze 082 847 1022

Limpopo

Jack's Paint and Hardware
Lephalale
Jacque / Barend 015 292 1645

Daisy Express
Alldays
Wilma 082 921 7337

Adorn Gifts & Crafts
Vaalwater
Nadine 073 220 5680

Warm House
Modimolle
Charlie 083 285 5733

Craft Corner
Groblersdal
Nita 0132622066

Creadores
Mokopane Central
Hester 015 491 6511

The Art Box
Setaria / Thabazimbi
Gerda 083 291 3666

Mphumalanga

Bhyat's Ermelo Mica
Ermelo
Yusuf 017 819 4258

Micans Florist and Gifts
Kriel
Rochelle 082 939 2727

Mica
Barberton
Ronie 013 712 2626

Paint Africa
Standerton
Mina 017 712 1156

Bhyats Mica
Amersfoort
Yusuf 017 753 1306

Gift Barrel CC
Marble Hall Groblersdal
Diana 013 261 3115

Hout Geskenkies
Lydenburg
Tilly 083 303 1097

All Things Nice
Middelburg
Gertina / Kookie 082 554 4968

Lekker Dinge
Mafikeng
Konri 083 943 9353

Something Old & Something New
Piet Retief
Alana 081 2703 060

HUR-T-ARA
Bethal
Annelies 0176472277

DIY Depot
Trichardt
Ernie 0176381384

Red Balloon Event
Witbank
Ina082 8760 717

Polokwane

Alta Hiesterman
Roodepoort
0828012774

Namibia

Disa Creative
Cape Orchard Farm
Aussenkehr
Ursula James +264812428954

Dynamic Hardware & Steel
Keetmanshoop
Elmarie+26463-224206

Magnifique Gifts
Suiderhof Windhoek
Brigitte +26461-241013

Pupkewitz Megabuild Central
Windhoek
+26461-2916000

Pupkewitz Megabuild Lifestyle
Centre Grove Mall,
Windhoek
+26461-2040700

Pupkewitz Megabuild
Luderitz
+26463-202036

Pupkewitz Megabuild
Keetmanshoop
+26463-223278

Pupkewitz Megabuild
Orangemund Eastgate Shopping
Centre
+26463-234300

Pupkewitz Megabuild
Walvis Bay
+26464-203451

Pupkewitz Megabuild
Swakopmund
+26464-414800

Pupkewitz Megabuild
Otjiwarongo
+26467-302378

Pupkewitz Megabuild
Tsumeb
+26467-220480
tsumeb@mps-pupkewitz.com

Pupkewitz Megabuild
Grootfontein
+26467-242075

Pupkewitz Megabuild
Outjo
+26467-311800

Hentiesbay SPAR
Henties Bay
+26464-500130

Kaap Agri
Omaruru
+26464-572800

Fiets Deli
Mariental
+264812487007
+26463-243320

Jessica Schutte
Stampriet
+264-812741588