

Let's get

Chalking'

Bring the

Beach

home with Ursula

Learn how to create

Faux Wood

with a Wood Graining Tool

Hand Painted

Perfection

By Inge's Art

Sponsored by
Granny B

Volume 7



creativity is
EXPERIMENTING,
GROWING, TAKING
RISKS, BREAKING
RULES, MAKING
MISTAKES, &
HAVING FUN.

-Mary Lou Cook

Editors Note

Let's get Chalking is proud to share our 7th edition with all our followers.

It's been a challenging time but we will always paint our world happier. Many of you dug deep into your stash and came up with the most amazing work. When stocks ran low, plans were made. A trademark of a true creative.

This month you will learn more about faux woodgrain with a special tool. We are painting perfect stripes and sharing some beautiful pieces done by our contributors. We show some of our stars from the #isolate & #create competition.

We have been blessed by a multitude of tutorials by artist, each one brilliant in their field. The live tutorials was a fun, educational way for our painters to get together and learn. Our community has grown by leaps and bounds.

My own tutorials, aimed at basic but critical preparation, was done in order to teach the most important part of any project.... PREPARATION. Thank you for all the love I received in turn. There will be more coming up. Oh! And remember to keep an eye out on page 12 for those notes.

I would love to get to know our readers a little better. Let me know what you would like to see in our magazine, who you are and where you're from. Ideas for new products? Something you would love to try?

Hope to hear from you soon

Paint Junky love
Marné



Let's get 'Chalking'

Volume 7



7

Painting Stripes that never bleeds again.

Here is a quick tip on how to achieve those perfect stripes



8

Hand Painted Perfection

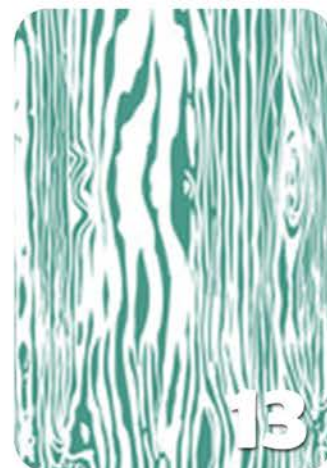
Inge shows us exactly how to get this classic hand painted look on a old hospital trolley



12

How to paint Glass

A step by step guide on how to prepare and paint glass.



13

Upcycled Sideboard

Ursula shows us how to use a Wood Graining tool.



17

#isolate #create

Some of the entries for the competition



20

Bringing the beach home

Ursula creates a beach styled chest to adore



We would love to hear from you!

It is always so wonderful to hear from our readers and see what they are getting up to...

Connect with us via email, whatsapp or Facebook.

Email:
letsgetchalkingmag@gmail.com

Whatsapp:
066 211 2690

Facebook:
<https://www.facebook.com/lets-getchalkingmag/>



Let's get
'Chalking'

Be the first to receive every issue.

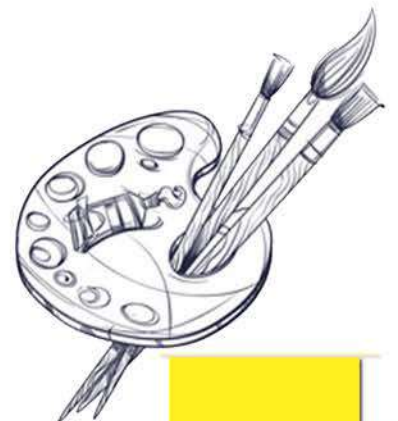
Whatsapp
066 2112690

Sign up



Inspiration Wall

You can't use up
CREATIVITY.
The more you
use, the more
you have!



Painters Q & A

The winning question for this month goes to:

Elmarie Swanson

Q: Is it possible to do a ombré type look? If so, what would you use? A sponge to blend the colours?

A: the basics are that you paint the colours up to the point where they just meet and let them dry, then broad strokes at the join with the preceding colour and spray with a spray bottle to keep the paint moist, then take a new brush and do the same for the subsequent colours and continue using broad strokes where they meet the blend the colours together

Write to us and WIN

Have a paint or technique related question? Whatsapp us on 066 211 2690

The winning question will receive a Granny B's Starter Pack to the value of R299



How to paint those **PERFECT STRIPES**

1. Prepare your project.
2. Paint your first two coats and sanding between each Layer to create a sound base coat
3. Measure out your stripes or use your masking tape as spacers.
4. stick down Masking tape where you do not want paint to be applied.
5. Apply one coat of paint in the same colour as your base colour and let it dry. Do not remove masking tape yet.
6. Once dry apply one coat of paint in the desired colour for your stripes.
7. Now it's time to remove your Masking tape... Remember not to rip off the tape as this may take your paint off. Pulling the tape off close to the surface on an angle will ensure no chips in your finish.
8. Apply 2 coats of sealer to protect your project.

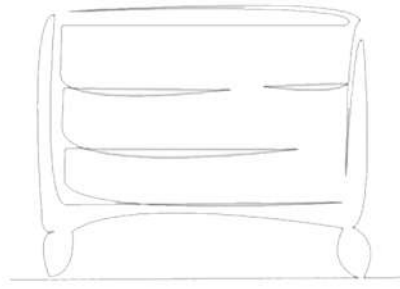
sparkle
wherever
you go

Leave
a little
sparkle
wherever
you go

Leave
a little
sparkle
wherever
you go

Leave
a little
sparkle
wherever
you go





Hand Painted Perfection

creative elegance by Inge's Art

From hospital to tool shed and finally restored to a new, greater glory, this trolley was passed on through two generations to full-fill different needs.

This Hospital Trolley was thrown out years ago when there was no use for it anymore. My father found it and turned it into a tool cabinet for his garage. When he had no need for it anymore, I was the lucky winner to be this trolley's next owner.

I paint anything and always knew this trolley should have flowers on it.

I had many plans for this trolley but waited a long time before I finally decided on it's purpose. The sure fact was that I always knew that it should have flowers painted on.

The time came for my daughter, Anje to enter her matric year. We decided that she should move into the garden flat for some extra privacy and silence for this very important time in her life. We started decorating her space and the trolley found it's place right there in her room. We were so excited as now it was time to give it a total new life.

This trolley was still in use as my craft storage space and didn't exactly fit my daughter's very specific taste as it was quite an unsightly piece of furniture. I knew though that it had potential and with a lick of fresh paint could be transformed into a swan.

As I only had Granny B's Teacup Green and Daisy – leftover from previous projects – in my paint stash, these were the colours we had to use. Luckily they tied in perfectly with Anje's colour scheme.

Together we started looking for inspirational images for our project. We wanted a soft and elegant flower theme that would not overpower the décor in her space. When we came across this image we both instantly agreed that this would be it!



and so the work begins...



Firstly I washed the whole cabinet down with soapy water to remove any dirt and grime. Where the surface was still glossy, I sanded it lightly just to de-gloss the surface.

After cleaning and sanding, I wiped the surface with a damp cloth to remove dust. Now it was time to apply a thin first coat of Teacup Green.

After 6 hours the first coat was dry and I applied the second coat of Teacup Green. This gave me a beautiful base colour as my canvas.

I used Daisy and blended it in from the top to the bottom to create a soft ombre effect. Once I was happy with the outcome I let it dry thoroughly.

I love to paint from a reference and I always keep it on hand while finishing the project. I taught myself to use acrylic paint and enjoy the texture and look it creates. I found it better to dilute the paint with a little water. The washes create softer tones and shades which I prefer than just applying thick layers of straight paint.



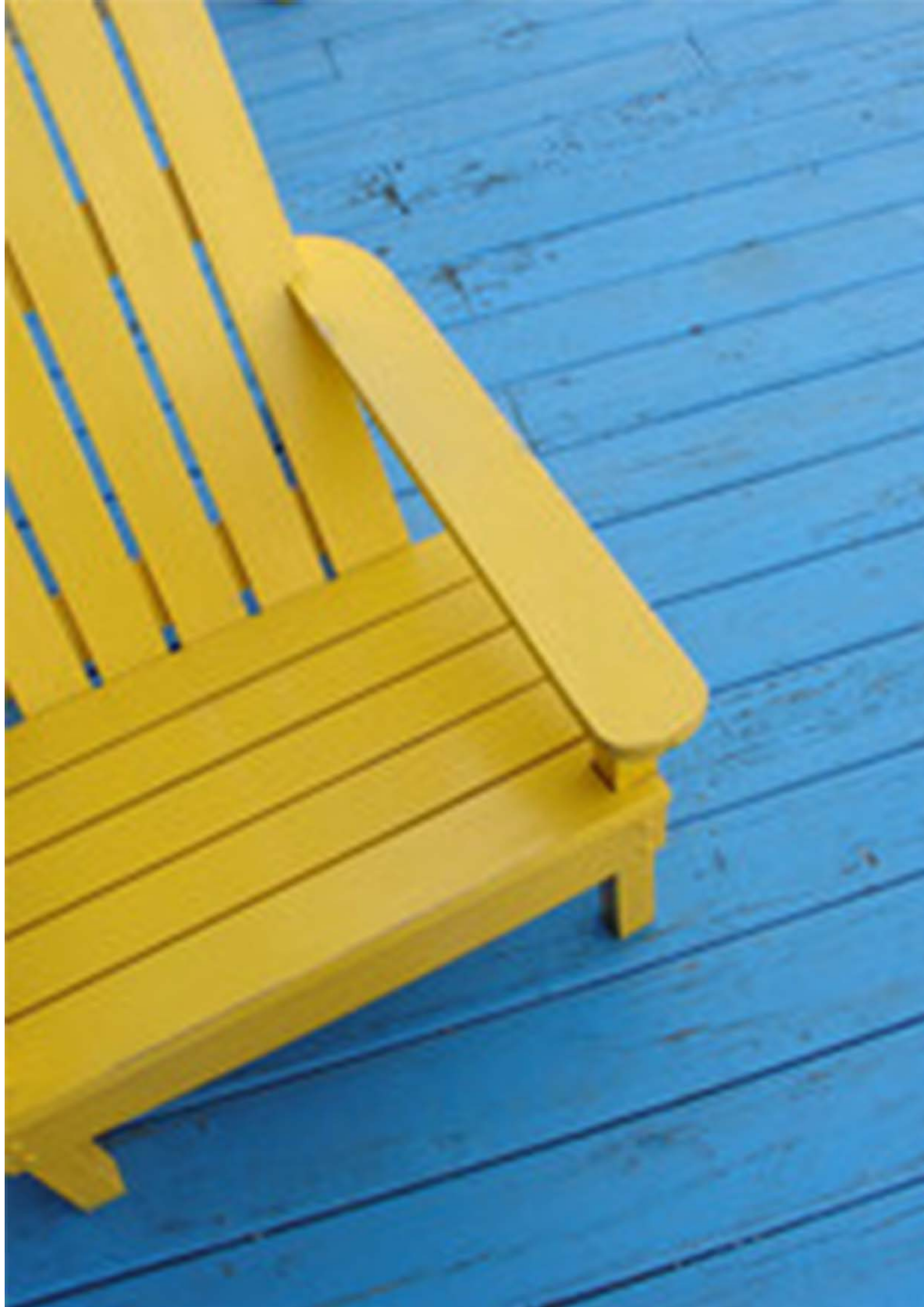
I started with the darker colours first. I applied Chocolate Cake to create the leaves and colour washed the areas where the colour had to be lighter. I wanted the leaves to fade away in some places to create a weathered look as in the inspirational image.

In continuing the washes I noticed some blue in a few places of the image and I blended in some soft blue hues to create the same. Once satisfied with the appearance of the leaves I turned to adding the flowers.

Using Peppermint Twist I painted the darker parts of the flowers. With long, brisk strokes I formed one flower at a time, still using diluted paint to create soft lines and flowing colours. Then I concentrated on the lighter parts of the flowers.

My colour of choice was Vanilla Cream for the lighter parts of the flowers. I took my time to ensure to get as much definition as possible in each flower. I touched the leaves with the same light shade in some areas. The crisp white areas were painted with Granny B's Daisy.

To finish off the project I added some deeper shadows to the leaves with Midnight Blue.



How to Paint Glass

Cleaning the Surface:

1. Pour Boiling Water into the bottle to **LOOSEN GLUE OF LABEL**.
2. Allow water to cool down and **SCRAPE OFF LABEL** with Wooden Spoon.
3. When label has been removed use the **ACETONE** and abrasive sponge to **REMOVE GLUE** residue.
4. Now it is time to **WASH YOUR BOTTLES** using your abrasive Sponge or Scotchbrite Pad and Warm Soapy water. I recommend using a degreasing soap Like GP Cleaner or Sunlight Liquid
5. When you are sure all areas have been washed well rinse with **CLEAN WATER**.
6. Let the bottle dry
7. When Glass is dry Spray whole surface with Rubbing Alcohol and wipe off with a clean lint free cloth.
8. Now it is time to **PAINT**

Painting the Surface:

1. Apply a thin coat of **GRANNY B'S ARMOUR MATT** and allow to dry min. 4hours. I always recommend waiting overnight between all coats.
2. When it has dried check for any areas you might have missed and apply another thin coat of armour if needed. Allow to dry.
3. Apply your **FIRST COAT** of paint using a sponge or Paint brush depending on finish desired. Allow to dry min. 4 hours
4. Apply **SECOND COAT** and allow to dry.
5. Apply a coat of **ARMOUR TO PROTECT** your Paint finish.
6. Now it is time for **TECHNIQUES**, Stencils, Transfers and Embellishments.
7. Apply a coat of **ARMOUR TO PROTECT** your techniques.
8. After applying your techniques and decals you can accentuate using **WAX** and **GILDERS PASTE**. *Remember you can NOT apply Armour over Waxes.
9. Let your item stand for a day or 2 to cure to full strength.

* **Expert Tip:** Heat your oven to 180°C and turn off. Place Painted item prior to sealing inside the oven and leave it in the oven until the oven has cooled completely. The heat will create an extra strong bond between the paint and glass.

What you need...

There are a few things to gather before you start painting Glass.

Cleaning Essentials:

- Abrasive Sponge
- Degreasing Soap
- Rubbing Alcohol / Acetone
- Lint free Cloths
- Wooden Spoon

Painting Essentials:

- Chalk Paint in assorted colours
- Granny B's Armour Matt
- Paint Brushes of different sizes
- Technique Products of choice to decorate

Tip: Keep acetone in a Nail Tech Sanitiser Dispenser to minimise fumes when using.



Cleaning and Maintenance:

Wipe surface with a Mild solution of Liquid Soap and Water.

Avoid using abrasive sponges and Solvent Cleaners!

This Finish will NOT be Dishwashers Safe.

Touch-up any nicks or scratches with left over paint if needed.

Upcycling Tutorial Sideboard



Ursula James – Disa Creative, Aussenkehr, Namibia
Email: ouzou@iway.na
Facebook page: www.facebook.com/AussenkehrShop

While renovating in Lüderitz, Namibia I found an old sideboard which made me join the up-cycling movement and breathed new life into the old dusty sideboard.

Requirements

- Armour (Varnish / Sealant)
- Granny B's Old Fashion Paint
- Stencils
- Prima Re-design Transfer
- Brushes
- Woodgrain Tool
- Scumble



INSTRUCTIONS

1. Prepare the surface well by cleaning the item with water and added Sun-light Liquid and vinegar, with a cloth, to remove all old oil and dust. Leave the item to dry and then seal the raw wood with Armour to prevent any dirt and oil captured inside the wood, to ooze out to the surface once completely painted and sealed.

Tip: Don't take chances with old raw wood furniture because they will make a yellow stain once you seal it after painting. See the warning picture.

2. The sideboard had an upper part which we removed and refitted with a Melamine counter top. Yes, one can paint Melamine due to its excellent adhesion properties. Just allow the first coat to dry for at least 4 hours. I painted all the sides with Granny B's Mushroom and the edge at the bottom with Granny B's Hurricane.



3. Two coats of Mushroom are sufficient. Once completely dried you can get your preparation ready for the wood-grain effect.

4. Mix water, Granny B's Hurricane and Scumble as per instructions on the Scumble container.

5. Apply a thin layer of diluted Granny B's Hurricane. Take the wood grain tool and slide/drag the tool from the top to the bottom along the painted area with a swivel / seesaw motion to create the grained effect. The seesaw motion while dragging, must be a continuous movement. Don't stop while swivelling.

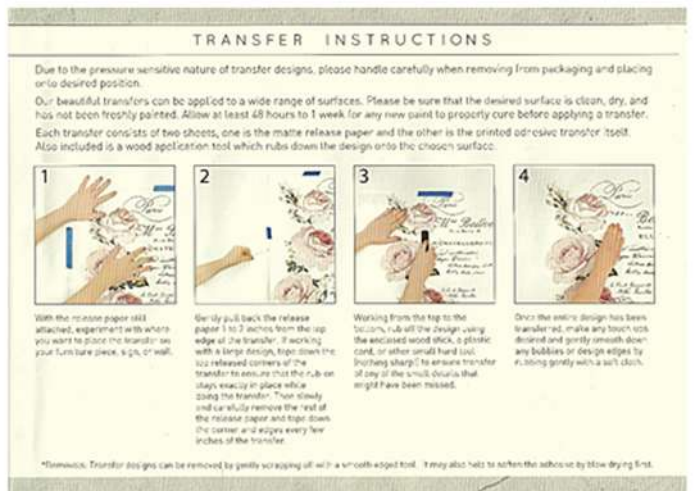
6. Once the desired area is covered by the wood grain effect leave it to completely dry.

7. Time to place the Prima Re-design transfers on. It comes with complete Transfer Instructions and wood stick.

8. Planning is essential before removing the release paper at the back of the transfer. Measure carefully and make sure where you want to place your transfer. Then carefully remove the release paper and place on desired area. Tape down the transfer to ensure the rub-on stays exactly in place while doing the transfer. Rub off the design using the enclosed wood stick.

9. You can check if all areas has been transferred from the release paper to your item by gently lifting the release paper and check. If any part of your picture remains on the release paper, carefully place it back and rub again over that area making sure all the small detail have been transferred.

10. Once the entire design has been transferred, gently smooth down any bubbles or design edges by rubbing gently with a soft cloth.





11. I sealed my transfer with one layer of Armour just to make sure they are secured and don't get damaged while doing the final touches.

12. Once the Armour is dried I used stencils in the corners of the counter top to blend in with the transfer pictures. Layering your stencil work will give it a unique look.

13. I painted my drawers with a mixture of Granny B's Blueberry Pie and Midnight Blue and a bit of Purple Reign. Check my mix with the blue in the transfer to get a perfect match.

14. Once satisfied with the overall look of the sideboard I sealed the drawers and also the shelves inside the sideboard with Armour to ensure all my hard work is protected and to give it longevity. The sides and drawers got 2 layers of Armour with 1 hour drying time between application and the counter top got 4 layers of Armour with 1 hour drying time between application to protect it against the traffic it will have to endure.

15. Once the Armour was completely dry I added my new knobs to the doors and drawers.



Tip: After putting so much effort into making something re-loved, give it the respect it deserves by finishing it properly.

- If Armour turns yellow once you have completed your piece, it is not the Armour, but the wood bleeding dirt and/or grease causing the discolouring. Since the Armour sealed your piece, just repaint the affected area and seal again. It will not bleed through the Armour again. To prevent wood bleeding in the first place seal you piece with Armour right from the start after cleaning and before painting.



#isolate#create Heletje Visser



GRANNY B'S Stay at home & CRAFT!
 Old Fashioned Paint

#ISOLATE & #CREATE

COMPETITION

Is-Lis-Charm Chalk Paint





#isolate#create Mariette Van Rensburg

Morphed from old school to trendy treasure chest filled with dreams and promises fit for any Ariel's sea world



Ursula James

Disa Creative, Aussenkehr, Namibia

Email: ouzou@iway.na

Facebook page: www.facebook.com/AussenkehrShop

Requirements

Armour (Varnish / Sealant)
Granny B's Old Fashion Paint
Stencils
Pappa G's Gilder's Paste
Eco Powa Brush Cleaner



INSTRUCTIONS

1. I removed all the handles and accessories on the chest and then cleaned it thoroughly with Eco Powa Brush Cleaner. I poured the brush cleaner in a spray bottle and sprayed the whole chest. Sprayed it till it was dripping wet. Left for 10 minutes and then wiped with a cloth. There after washed the whole chest down with clean water and a cloth and left to dry.

2. Once dried started painting the chest. Even the felt material on the inside of the little tray was painted with armour without any problems. Inside of chest painted with Granny B's Overcast and the whole tray with Midnight Blue. Two layers are sufficient. Wait for the first layer to dry completely before starting with the second layer.



3. Once the inside was finished I started on the outside of the chest. Chest was covered with 2 layers of Mushroom and then the legs of the treasure chest was painted with a custom mixed blue. Mixture was Blueberry Pie with Purple Reign and bit of Midnight Blue.

4. The lid of the chest sides was also painted 2 layers of Mushroom. But the top was done with blending in an oval shape with Granny B's Hurricane, Overcast and Mushroom.

5. For this blending you need a spray bottle filled with clean water with 3 brushes for each colour a brush. I started off with the Hurricane on the outside. Then immediately applied Overcast in oval shape in the middle and last covered the whole centre with Mushroom. I worked quickly to avoid paint to dry before applying the next colour. Give the whole area a quick spray with the water spray bottle to keep the paint wet. Just removed the excess paint for my brush with a clean dry cloth and start blending the lines in from light to darker. Keep removing paint from my brush and keep on blending.

6. Left it to dry completely for more than an hour and then started the whole process again since one coat is not sufficient, but the second quote provided me with that effect I liked.

7. Once the blending effect was completed I left it to dry. The oval shape with the blending in circular motion outward almost gives you the idea of an island in the ocean with its sea currents around it - Motion of the Ocean.

8. Stencil only the word BEACH using Granny B's Dove Grey in the centre of blending on top of my chest lid. Now move the stencil a bit up and to the right to create a shadow effect. Secure with masking tape and stencil the word BEACH again, but this time I use a colour from Granny B's new Kokomo Collection - Liquid Metal Bermuda Blue. That metal colour in the centre with its shadow just seems to catch your eye.

9. Once all was dried. I put back the whole chest again to be one complete chest and no longer lose sections.

10. By changing the way I hold my brush I started with Granny B's Hurricane and painted up and down strokes with my paint brush all around the chest moving up and down like a heart monitor waves.

11. Once completed with Hurricane all around the chest I did the same brush stroke effect with the custom mixed blue colour which I used on my legs of the chest. I continue with the uneven heart monitor waves a bit lower than my Hurricane strokes again all around the chest.

12. Once completed with the custom mixed blue I start with the same strokes but with Midnight Blue this time and move all around the chest.

13. Once finished I did this same paint strokes on the corners on top of the lid and also on the sides of the lid.

14. Finished with Midnight Blue I used again Granny B's new Kokomo Collection - Liquid Metal Bermuda Blue to highlight the corners and centre of the Midnight Blue areas to make the darker areas feel more vibrant and alive.

15. Once dried I sealed the whole chest with 2 layers of Armour with 1 hours drying time between the layers. And the top surface of the lid I sealed with 4 layers of Armour due to the traffic it must handle since this chest will be used as a TV Stand.





16. While waiting for the layers to dry I started painting my handles and accessories of the chest with Pappa G's Gilder's Paste using a small brush. I used the colour German silver. Gilder's Paste will fully cure within 24 hours, if you have made a mistake and want to remove the paste do so within an hour of application, using a cloth and mineral turpentine. Granny B's recommend applying Gilder's paste after you have sealed your project in case there is a reaction between the oils in the Gilder's Paste and water-based sealers. If your past has dried out simply add a small amount of mineral turps to the paste and mix in well....and as if magic it will be as good as new.

17. Once my Armour was complete dried I put back all the handles and accessories on the chest and took my finger and add a bit of Pappa G's Gilder's Paste, German Silver on top of the lid and some around the edges to give that unique effect and perfect finishing to the chest.



Proudly sponsored by:



thank you for reading ...