

# Numatic

Performance You Can Trust



Numatic

**Cleaning is a big responsibility. The cleaning industry is compelled to drive higher quality, consistent cleaning standards to keep our employees, customers and the public safe. Delivering on today's demands and overcoming complex challenges requires professional cleaning solutions that deliver performance you can trust.**

Three core values are at the centre of all Numatic product development and manufacturing... Innovation, Quality and Price. These values help us to increase productivity, cleaning standards and meet the demands of all industries, right across the globe.



## Building on Sustainability

**We recognise the need and demand for sustainable cleaning solutions, without compromising productivity or quality.**

### Built to Last

Our products are built to last with tried, tested and trusted designs, ongoing innovations, and a commitment to developing sustainable cleaning solutions.

### Efficiency

We ensure our products are the most efficient for every user; from water and detergent usage to electricity consumption. We also provide online training for help and support.

### Serviceability

Our products are designed to be easily and economically serviced throughout their lifetime. Not only this, but we can still service and provide replacement parts for every product we have ever made.

### Recycling

We are committed to developing products using high-quality, recycled plastic. Right from the initial design, our products are manufactured to be easily recycled at the end of their life.

### Disposal

We have worked hard to ensure zero waste goes to landfill and since 2017 we have achieved this. Anything that cannot be recycled is incinerated.

## Why ReFlo Technology?

Our ReFlo range is engineered from the highest quality, recycled plastic, using our innovative, environmentally sustainable ReFlo Technology. ReFlo Technology uses post-industrial plastics from the automotive industry, which are diverted from landfill or incineration.



# New Productivity

We continually adapt, develop and streamline our products and processes to ensure optimum **cleaning productivity**. New to the range...



## NEW NX300 Pro Cordless Battery

The new NX300 Pro Cordless delivers professional level cordless performance to a versatile and expanding range. Quicker, safer and more convenient, switching to Pro Cordless raises productivity levels, saving time and money.

### Power Driving Productivity

- 36V Lithium Power
- Fast Charge
- One Fits All Battery



- **Enhanced Cell Performance**  
Premium Tier-1 cell technology with high-quality welded Nickel power rails.
- **Longer Lifecycle**  
Greater than 2500 cycles with built-in battery status and health check safety system.

**Ease of Use**  
Easy-reach carry handle and quick-release button for fuss-free battery change and charging.

### PRO CORDLESS RANGE

#### NBV190NX / NBV240NX / PBT230NX

Combining total cordless freedom with powerful and professional cleaning results, maximising cleaning productivity and delivering the results you need without compromise.

#### RSB150NX

Safe and unobtrusive cleaning with enhanced user comfort, maximum cleaning productivity and unrivalled cleaning results.

#### TTB1840NX

Compact, cordless and convenient cleaning with the performance of a much bigger machine for clean, dry, hygienic and safe floors in minutes.



### Numatic X-Change

The NX300 battery packs can be used across the growing Pro Cordless Range.



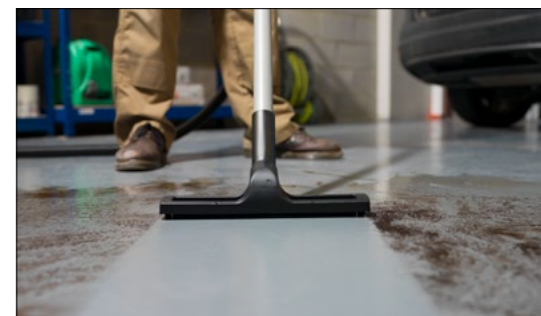
### HomeCare 6-13

The familiar faces of Henry and Friends bring reliability, quality and professional cleaning to every home.



### CleanCare 14-25

Quality and cleaning innovation from the world's most popular, professional vacuum. CleanCare brings power, performance and reliability to our commercial cleaning product range.



### ProCare 26-31

Providing performance you can trust, delivering enhanced filtration where it is needed most. Advanced, professional cleaning for the collection and control of dust and hazardous substances.



### FloorCare 32-39

Providing professional cleaning results in even the most demanding environments, with innovative, reliable and effective floorcare solutions.



### VersaCare 40-59

Versatility, innovation and quality are at the core of our janitorial cleaning systems. Attention to detail and practical engineering ensure complete customer satisfaction in function, operation and convenience.

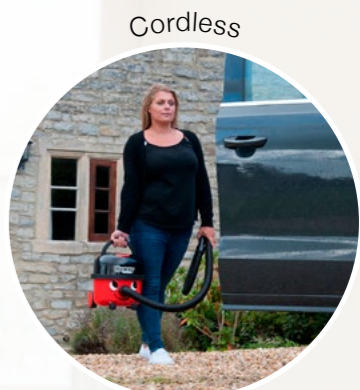


# HomeCare

The **Face** of Professional Cleaning

HomeCare Range	8-9
Henry / Hetty SprayMop	9
Hi-Line Range	10
Henry HepaFlo Bags	11
HomeCare Accessories	11-13

- ✓ More than 14 million made and most still in use today
- ✓ Independently rated the UK's most reliable vacuum brand
- ✓ Built to last
- ✓ Powerful cleaning
- ✓ Energy efficient



# Henry Range



**Henry HVR160**

- Carpets, hard-floors, cars, stairs, DIY
- Handy on-board tool storage
- Emptying with no dust and no mess
- 320x340x345mm (WxLxH)

CAPACITY (L)	6.0	WEIGHT (KG)	7.5
POWER CORD (M)	10.0	POWER (Volts AC/Hz)	230 / 50/60
MOTOR (W)	620	CLEANING RANGE (M)	26.1
SUCTION H <sub>2</sub> O (MM)	2300	KIT (See page 11)	AS0



**Hetty HET160**

- Carpets, hard-floors, cars, stairs, DIY
- Handy on-board tool storage
- Emptying with no dust and no mess
- 320x340x345mm (WxLxH)

CAPACITY (L)	6.0	WEIGHT (KG)	7.5
POWER CORD (M)	10.0	POWER (Volts AC/Hz)	230 / 50/60
MOTOR (W)	620	CLEANING RANGE (M)	26.1
SUCTION H <sub>2</sub> O (MM)	2300	KIT (See page 11)	AS0

Independently rated the **UK's most reliable vacuum brand**



## Henry & Hetty Eco

**NEW**



**Henry HVR160 ECO**

- Our highest efficiency motor yet
- 30% reduction in energy consumption
- Powerful EcoBrush for stubborn dust, dirt and pet hair
- 320x340x345mm (WxLxH)

CAPACITY (L)	6.0	WEIGHT (KG)	7.7
POWER CORD (M)	10.0	POWER (Volts AC/Hz)	230 / 50/60
MOTOR (W)	420	CLEANING RANGE (M)	26.1
SUCTION H <sub>2</sub> O (MM)	1750	KIT (See page 12)	HS1

**NEW**



**Hetty HET160 ECO**

- Our highest efficiency motor yet
- 30% reduction in energy consumption
- Powerful EcoBrush for stubborn dust, dirt and pet hair
- 320x340x345mm (WxLxH)

CAPACITY (L)	6.0	WEIGHT (KG)	7.7
POWER CORD (M)	10.0	POWER (Volts AC/Hz)	230 / 50/60
MOTOR (W)	420	CLEANING RANGE (M)	26.1
SUCTION H <sub>2</sub> O (MM)	1750	KIT (See page 12)	HS1

Equipped with our highest efficiency motor yet, delivering a 30% reduction in energy consumption.



## Henry Xtra

All the features of the Henry you know and love, plus even more handy tools.

AiroBrush270



**XTRA Tools**



**Henry Xtra HVX160**

- Powerful AiroBrush270 for carpets
- Specialist Hard Floor Tool
- A tool for every job
- Handy on-board tool storage
- Emptying with no dust and no mess
- 320x340x345mm (WxLxH)

CAPACITY (L)	6.0	WEIGHT (KG)	7.5
POWER CORD (M)	10.0	POWER (Volts AC/Hz)	230 / 50/60
MOTOR (W)	620	CLEANING RANGE (M)	26.1
SUCTION H <sub>2</sub> O (MM)	2300	KIT (See page 12)	XSO



**Great for PETS**



**Henry Petcare HPC140**

- Powerful AiroBrush270 for stubborn pet hairs on carpets
- Compact AiroBrush140 tackles pet hairs on the stairs, sofa and in the car
- Odour-reducing MicroFresh Filter
- Carpets, hard-floors, cars, stairs, DIY
- Emptying with no dust and no mess
- 320x340x345mm (WxLxH)

CAPACITY (L)	6.0	WEIGHT (KG)	7.5
POWER CORD (M)	10.0	POWER (Volts AC/Hz)	230 / 50/60
MOTOR (W)	620	CLEANING RANGE (M)	26.1
SUCTION H <sub>2</sub> O (MM)	2300	KIT (See page 12)	HS0



**Henry Allergy HVA160**

- High-performance Combi Floor Tool
- Specialist FreeFlo Hard Floor Tool
- Advanced, 3-stage HEPA filtration
- Handy on-board tool storage
- Emptying with no dust, no mess, no allergens
- 320x340x345mm (WxLxH)

CAPACITY (L)	6.0	WEIGHT (KG)	7.7
POWER CORD (M)	10.0	POWER (Volts AC/Hz)	230 / 50/60
MOTOR (W)	620	CLEANING RANGE (M)	26.1
SUCTION H <sub>2</sub> O (MM)	2300	KIT (See page 11)	AS9



**Henry Cordless HVB160 1 & 2 Battery**

- Power boost for more demanding clean-ups
- 3.5hr quick charge
- Handy on-board tool storage
- Emptying with no dust and no mess
- 320x340x320mm (WxLxH)

CAPACITY (L)	6.0	WEIGHT (KG)	6.4
MOTOR (W)	250	POWER (Lithium Bat. Volts)	36
SUCTION H <sub>2</sub> O (MM)	1200	KIT (See page 13)	AS29E



**Charles Wet&Dry CVC370**

- Versatile wet and dry toolkit
- Blocked sinks, showers, household leaks, spills, DIY, car, home
- 360x370x510mm (WxLxH)

CAPACITY (L) DRY / WET	15.0 / 9.0	WEIGHT (KG)	9.0
POWER CORD (M)	10.0	POWER (Volts AC/Hz)	230 / 50/60
MOTOR (W)	1000	CLEANING RANGE (M)	26.8
SUCTION H <sub>2</sub> O (MM)	2400	KIT (See page 13)	A21A



**Henry Wash HWV370**

- Shampoo carpets, clean hard-floors
- Valet the car, refresh the sofa
- Emergency clean-ups and DIY
- 360x370x510mm (WxLxH)

CAPACITY (L) CLEAN / DIRTY	5.0 / 9.0	WEIGHT (KG)	10.6
POWER CORD (M)	10.0	POWER (Volts AC/Hz)	230 / 50/60
MOTOR (W)	1000	CLEANING RANGE (M)	26.0
SUCTION H <sub>2</sub> O (MM)	2400	KIT (See page 13)	AH6



**DRY WET EXTRACTION UPHOLSTERY**



**George GVE370**

- 4-in-one wet, dry, extraction and upholstery
- Revive carpets, clean hard-floors, refresh the sofa, valet the car, suck-up spills and even unblock the sink
- 360x370x510mm (WxLxH)

CAPACITY (L) DRY / WET	15.0 / 9.0	WEIGHT (KG)	11.2
POWER CORD (M)	10.0	POWER (Volts AC/Hz)	230 / 50/60
MOTOR (W)	1000	CLEANING RANGE (M)	26.8
SUCTION H <sub>2</sub> O (MM)	2400	KIT (See page 13)	A26A

## Henry & Hetty SprayMop

Featuring an easy-fit, high-efficiency BluTec mop pad, foot or hand-operated liquid dispenser and swivel design, the Henry and Hetty SprayMop makes hard-floor cleaning quick and easy. When you've finished, simply slip-off the mop pad and pop in the wash with your next load of laundry, ready to use again and again.

- ✓ Perfect All-rounder
- ✓ Swivel Design
- ✓ Easy-fit Mop Pads
- ✓ On-board Liquid Dispenser
- ✓ Use Again and Again



# Hi-Line Range

**NEW**



### Henry HVR170

- Versatile toolkit
- Carpets, hard-floors, cars, stairs, DIY
- Handy on-board tool storage
- Emptying with no dust and no mess
- 360x370x390mm (WxLxH)

CAPACITY (L)	7.2	WEIGHT (KG)	8.0
POWER CORD (M)	10.0	POWER (Volts AC/Hz)	230 / 50/60
MOTOR (W)	620	CLEANING RANGE (M)	26.4
SUCTION F <sub>0</sub> (MM)	2300	KIT (See page 11)	ASO

**HENRY Original**

### Henry Original

The original 200 series, a trusted and familiar face on the outside with the latest innovation inside.



### Henry HVR200

- Versatile toolkit
- Carpets, hard-floors, cars, stairs, DIY
- Handy on-board tool storage
- Emptying with no dust and no mess
- 340x360x370mm (WxLxH)

CAPACITY (L)	9.0	WEIGHT (KG)	8.0
POWER CORD (M)	10.0	POWER (Volts AC/Hz)	230 / 50/60
MOTOR (W)	620	CLEANING RANGE (M)	26.4
SUCTION F <sub>0</sub> (MM)	2300	KIT (See page 11)	ASO

**Great for PETS**



### Henry Petcare HPC200

- Powerful AiroBrush270 for stubborn pet hairs on carpets
- Compact AiroBrush140 tackles pet hairs on the stairs, sofa and in the car
- Odour-reducing MicroFresh Filter
- Carpets, hard-floors, cars, stairs, DIY
- Emptying with no dust and no mess
- 340x360x370mm (WxLxH)

CAPACITY (L)	9.0	WEIGHT (KG)	8.0
POWER CORD (M)	10.0	POWER (Volts AC/Hz)	230 / 50/60
MOTOR (W)	620	CLEANING RANGE (M)	26.4
SUCTION F <sub>0</sub> (MM)	2300	KIT (See page 12)	HSO

**NEW**



**HEPA13 Filtration**



### Henry HVR170 HEPA

- Versatile toolkit
- Carpets, hard-floors, cars, stairs, DIY
- Certified HEPA13 filtration down to 0.3 microns at 99.97% efficiency
- Emptying with no dust and no mess
- 360x370x390mm (WxLxH)

CAPACITY (L)	7.2	WEIGHT (KG)	8.2
POWER CORD (M)	10.0	POWER (Volts AC/Hz)	230 / 50/60
MOTOR (W)	620	CLEANING RANGE (M)	26.4
SUCTION F <sub>0</sub> (MM)	2300	KIT (See page 11)	ASO

### Hetty HET200

- Versatile toolkit
- Carpets, hard-floors, cars, stairs, DIY
- Handy on-board tool storage
- Emptying with no dust and no mess
- 340x360x370mm (WxLxH)

CAPACITY (L)	9.0	WEIGHT (KG)	8.0
POWER CORD (M)	10.0	POWER (Volts AC/Hz)	230 / 50/60
MOTOR (W)	620	CLEANING RANGE (M)	26.4
SUCTION F <sub>0</sub> (MM)	2300	KIT (See page 11)	ASO

### Henry HVR240

- Carpets, hard-floors, cars, stairs, DIY
- Bumper for wall and door protection
- Handy on-board tool storage
- Emptying with no dust and no mess
- 360x370x415mm (WxLxH)

CAPACITY (L)	9.0	WEIGHT (KG)	9.0
POWER CORD (M)	10.0	POWER (Volts AC/Hz)	230 / 50/60
MOTOR (W)	620	CLEANING RANGE (M)	26.4
SUCTION F <sub>0</sub> (MM)	2300	KIT (See page 11)	ASO



**Best for CARPETS**



### James JVP180

- Versatile toolkit and aluminium tube set
- Carpets, hard-floors, cars, stairs, DIY
- Convenient cable replacement system
- Handy on-board tool storage
- Emptying with no dust and no mess
- 340x365x360mm (WxLxH)

CAPACITY (L)	8.0	WEIGHT (KG)	6.0
POWER CORD (M)	10.0	POWER (Volts AC/Hz)	230 / 50/60
MOTOR (W)	620	CLEANING RANGE (M)	26.4
SUCTION F <sub>0</sub> (MM)	2300	KIT (See page 12)	AHO

### Henry Xtra HVX200

- Powerful AiroBrush270 for carpets
- Specialist Hard Floor Tool
- Carpets, hard-floors, cars, stairs, DIY
- Handy on-board tool storage
- Emptying with no dust and no mess
- 340x360x370mm (WxLxH)

CAPACITY (L)	9.0	WEIGHT (KG)	8.0
POWER CORD (M)	10.0	POWER (Volts AC/Hz)	230 / 50/60
MOTOR (W)	620	CLEANING RANGE (M)	26.4
SUCTION F <sub>0</sub> (MM)	2300	KIT (See page 12)	XSO

**NEW**



### Henry Cordless HVB170 1 & 2 Battery

- Power boost for more demanding clean-ups
- 3.5hr quick charge
- Handy on-board tool storage
- Emptying with no dust and no mess
- 360x370x390mm (WxLxH)

CAPACITY (L)	7.2	WEIGHT (KG)	6.88
MOTOR (W)	250	RUNTIME 1 BATTERY (MIN)	Hi 20 / Lo 30
		RUNTIME 2 BATTERY (MIN)	Hi 40 / Lo 60
SUCTION F <sub>0</sub> (MM)	1200	POWER (Lithium Bat. V)	36
CHARGE TIME (HR)	3.5	KIT (See page 13)	AS29E



# Henry Accessories

from the **UK's most reliable** vacuum brand

### Henry HepaFlo Bags

- 5 Bag Pack 907076 (NVM-1CH)
- 10 Bag Pack 907075 (NVM-1CH)

Designed for Henry, by Henry  
Henry Bags are the perfect fit, maximising capacity and airflow, delivering peak suction.

Genuine Henry HepaFlo Bags are suitable for use with Henry, Hetty, Harry and James.



### Pro Accessory Kit 909257

The Henry ProKit has been designed to provide the best possible and most convenient cleaning results from your Henry.

Includes - AiroBrush270, AiroBrush140 and Hard Floor Tool. Intended for dry use only.



### HENRY KIT - ASO 903146

601144	601142	601141	601145	601146	903712	912358
601008	601052	601141	601142	601144	601145	601146
601008	601052	601141	601142	601144	601145	601146
601008	601052	601141	601142	601144	601145	601146

### HENRY ALLERGY KIT - AS9 909193

601008	601008	912358	903712	601141	601145	601146
601052	601141	601142	601145	601146	601144	601145
601052	601141	601142	601145	601146	601144	601145
601052	601141	601142	601145	601146	601144	601145

**JAMES KIT - AH0 903754**

601024	Aluminium Extension Tube (x2)	912358	280mm ProFlo Combination Floor Tool	601144	65mm Dusting Tool
601051	Aluminium Tube Bend with NPC Volume Control	601141	Double Taper Hose / Tool Adaptor	601145	150mm Mattress Tool
903712	2.2m FloMax Conical Hose	601142	240mm Crevice Tool	601146	150mm Slide-on Brush Tool

**HENRY PETCARE KIT - HSO 909145**

601052	Stainless Steel Tube Bend with NPC Volume Control	907424	Airo 270mm Easy Ride Turbo Brush	601144	65mm Dusting Tool
601008	Stainless Steel Extension Tube (x2)	907475	Airo 140mm Hand Turbo Brush	601145	150mm Mattress Tool
903712	2.2m FloMax Conical Hose	601141	Double Taper Hose / Tool Adaptor	601146	150mm Slide-on Brush Tool
912358	280mm ProFlo Combination Floor Tool	601142	240mm Crevice Tool		

**HENRY ECO KIT - HS1 607361**

601052	Stainless Steel Tube Bend with NPC Volume Control	601228	EcoBrush190	601145	150mm Mattress Tool
601008	Stainless Steel Extension Tube (x2)	601141	Double Taper Hose / Tool Adaptor	601146	150mm Slide-on Brush Tool
903712	2.2m FloMax Conical Hose	601142	240mm Crevice Tool		
912358	280mm ProFlo Combination Floor Tool	601144	65mm Dusting Tool		

**HENRY XTRA KIT - XS0 909146**

903712	2.2m FloMax Conical Hose	907424	Airo 270mm Easy Ride Turbo Brush	601144	65mm Dusting Brush
601052	Stainless Steel Tube Bend with NPC Volume Control	900918	300mm MultiFlo Dry Brush Tool	601145	150mm Upholstery Tool
601008	Stainless Steel Extension Tube (x2)	601141	Double Taper Hose / Tool Adaptor	601146	150mm Slide-on Brush for Upholstery Tool
912358	280mm ProFlo Combination Floor Tool	601142	240mm Crevice Tool		

**HENRY CORDLESS KIT - AS29E 904251**

601008	Stainless Steel Extension Tube (x2)	902072	270mm Single Slot Floor Tool	601144	65mm Dusting Tool
601052	Stainless Steel Tube Bend with NPC Volume Control	601141	Double Taper Hose / Tool Adaptor	601145	150mm Mattress Tool
903712	2.2m FloMax Conical Hose	601142	240mm Crevice Tool	601146	150mm Slide-on Brush Tool

**CHARLES KIT - A21A 607221**

601025	Aluminium Tube Bend with (Black) Volume Control	900954	300mm MultiFlo Wet Pick-up Tool	601145	150mm Mattress Tool
601024	Aluminium Extension Tube (x2)	601141	Double Taper Hose / Tool Adaptor	601146	150mm Slide-on Brush Tool
601101	2.4m NuFlex Threaded Hose	601142	240mm Crevice Tool		
902071	300mm Combination Floor Tool	601144	65mm Dusting Tool		

**HENRY WASH KIT - AH6 911861 / AS6 911124**

Aluminium Tube Set with machine / Stainless Steel Tube Set with replacement kit.

907232	Trigger Valve Wand	907474	300mm Dual Scrub / Wet Pick-up Tool	907233	Spray Tube C/W x2 clips
601024	Extension Tube (x2)	601126	275mm Fishtail Extraction Tool	907234	2.9m Solution Tube C/W x6 clips
601740	2.5m NuFlex Bayonet Hose	907235	100mm Upholstery Extraction Tool		

**GEORGE KIT - A26A 607326**

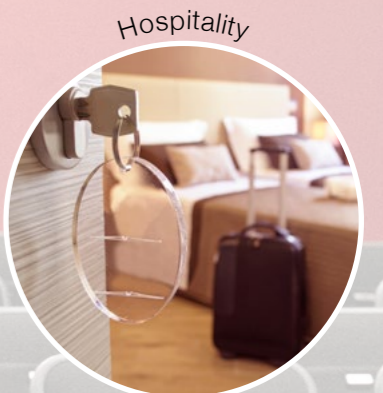
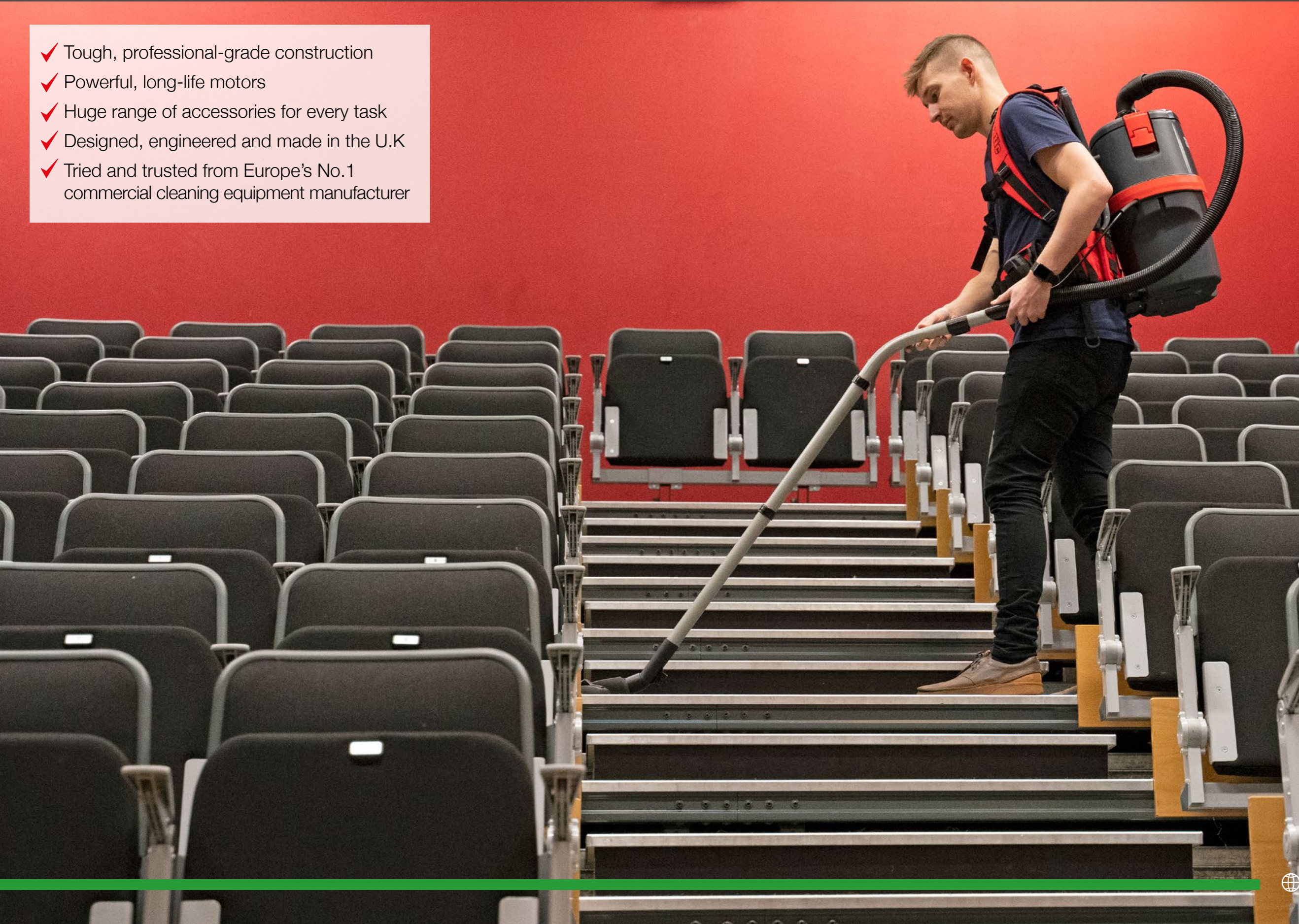
601009	Stainless Steel Extraction Trigger Bend Tube	601126	275mm Fishtail Extraction Tool	601141	Double Taper Hose / Tool Adaptor
601006	Stainless Steel Lower Tool Extraction Tube	907474	300mm Dual Scrub / Wet Pick-up Tool	604165	TriTex Filter for 12" / 305mm Machines
601008	Stainless Steel Extension Tube	601225	100mm Upholstery Extraction Tool	601145	150mm Mattress Tool
601010	1.9m NuFlex Bayonet Hose	601968	CleanTec Trigger Valve and Spray Tube	601146	150mm Slide-on Brush Tool
601299	3.0m CleanTec Extraction Hose	601144	65mm Dusting Tool		
902071	300mm Combination Floor Tool	601142	240mm Crevice Tool		

# CleanCare

Performance You Can **Trust** from Europe's No.1

- ✓ Tough, professional-grade construction
- ✓ Powerful, long-life motors
- ✓ Huge range of accessories for every task
- ✓ Designed, engineered and made in the U.K
- ✓ Tried and trusted from Europe's No.1 commercial cleaning equipment manufacturer

Eco ReFlo Range	16	Dry Big Capacity Vacuums	21
ProLine Contractor Range / Sanitise Pro	17-18	Professional Wet Vacuums	22
Cordless Range / Mains RucSac	19	Professional Wet & Dry Vacuums	23
Steel Top Range	20	Carpet Extraction Cleaners	23
MicroLine / Aircraft Line	21	Accessories	24-25





## Eco ReFlo Range

Made from up to 75% of the highest quality recycled plastic; equipped with our highest efficiency motor yet.

Delivering the same high-performance, high-quality and long-lasting Numatic results as always...



**NEW**

CABLE MANAGEMENT & Plugged Cable

ECO Power

**NEW**

ECO Power

**NEW**

ECO Power

Certified HEPA13 Filtration

**ERP180**

- High-efficiency, economical cleaning
- Sustainably engineered from up to 75% recycled plastic
- Carpets, hard-floors, cars, stairs, DIY
- Handy on-board tool storage
- Plugged cable
- 340x365x360mm (WxLxH)

CAPACITY (L)	8.0	WEIGHT (KG)	6.0
POWER CORD (M)	10.0	POWER (Volts AC/Hz)	230 / 50/60
MOTOR (W)	420	CLEANING RANGE (M)	26.4
SUCTION H <sub>2</sub> O (MM)	1750	KIT (See page 24)	ASO

**EPR170**

- Equipped with our highest efficiency motor yet
- Carpets, hard-floors, cars, stairs, DIY
- Extra reach 12.5m cable with trouble-free cable rewind and additional on-board tool storage
- Plugged cable
- Emptying with no dust and no mess
- 360x370x390mm (WxLxH)

CAPACITY (L)	7.2	WEIGHT (KG)	8.1
POWER CORD (M)	12.5	POWER (Volts AC/Hz)	230 / 50/60
MOTOR (W)	420	CLEANING RANGE (M)	31.4
SUCTION H <sub>2</sub> O (MM)	1750	KIT (See page 24)	ASO

**EPR170 HEPA**

- Equipped with our highest efficiency motor yet
- Carpets, hard-floors, cars, stairs, DIY
- Certified HEPA13 filtration down to 0.3 microns at 99.97% efficiency
- Plugged cable
- Emptying with no dust and no mess
- 360x370x390mm (WxLxH)

CAPACITY (L)	7.2	WEIGHT (KG)	8.3
POWER CORD (M)	12.5	POWER (Volts AC/Hz)	230 / 50/60
MOTOR (W)	420	CLEANING RANGE (M)	31.4
SUCTION H <sub>2</sub> O (MM)	1750	KIT (See page 24)	ASO

## Annual Energy Usage

Using our new 420W high-efficiency motor, the Eco ReFlo Range delivers professional cleaning while reducing energy usage and cost.



## ProLine Contractor Range

**CABLE MANAGEMENT & Plugged Cable**

**PSP180**

- Carpets, hard-floors, cars, stairs, DIY
- Handy on-board tool storage
- Professional accessory kit
- Plugged cable
- 340x365x360mm (WxLxH)

CAPACITY (L)	8.0	WEIGHT (KG)	6.0
POWER CORD (M)	10.0	POWER (Volts AC/Hz)	230 / 50/60
MOTOR (W)	620	CLEANING RANGE (M)	26.4
SUCTION H <sub>2</sub> O (MM)	2300	KIT (See page 24)	AHO

**CONTRACTORS' Choice**

**PSP240**

- Carpets, hard-floors, cars, stairs, DIY
- Bumper for wall and door protection
- Handy on-board tool storage
- Plugged cable
- 360x370x415mm (WxLxH)

CAPACITY (L)	9.0	WEIGHT (KG)	8.0
POWER CORD (M)	10.0	POWER (Volts AC/Hz)	230 / 50/60
MOTOR (W)	620	CLEANING RANGE (M)	26.4
SUCTION H <sub>2</sub> O (MM)	2300	KIT (See page 24)	AHO

**PSP370**

- Carpets, hard-floors, cars, stairs, DIY
- Bumper for wall and door protection
- Handy on-board tool storage
- Plugged cable
- 360x370x510mm (WxLxH)

CAPACITY (L)	15.0	WEIGHT (KG)	9.0
POWER CORD (M)	10.0	POWER (Volts AC/Hz)	230 / 50/60
MOTOR (W)	620	CLEANING RANGE (M)	26.4
SUCTION H <sub>2</sub> O (MM)	2300	KIT (See page 24)	AHO

## NEW NSU370 High-pressure Misting Disinfection System

Designed and specified for extended professional use by any user across all industries and environments for consistent results and long-life reliability.

- Increased Productivity**  
 A consistent dispersion pattern for reliable disinfection results and even distribution increases coverage performance and dries in under 10 minutes.
- High-pressure**  
 High-pressure mist creates a vortex effect, reducing particle speed, displacement of pathogens and increasing coverage across surfaces and touchpoints.
- Solving Cleaning Solutions**  
 With the ability to sanitise large areas, quick-drying mist and consistent results, the NSU370 provides a simple solution to many of today's cleaning challenges.
- Performance You Can Trust**  
 Designed and engineered for extended use in commercial environments.



**NEW**

HIGH-PRESSURE MISTING DISINFECTION SYSTEM

**NSU370**

- Simple to use with high-pressure quick drying mist
- Effective results every time by every user across a wide range of environments
- High-performance pump and large capacity for extended use

CAPACITY (L)	5.0	HOSE LENGTH (M)	2.2
WEIGHT (KG)	7.2	POWER CORD (M)	10
FLOW (ML/MIN)	150	OPTIMUM SPRAY DISTANCE (CM)	100
DROPLET SIZE (MICRONS)	65-75	MAX PUMP PRESSURE (BAR/PSI)	15 / 217
CLEANING RANGE (M)	26.0		

\*99.999% effective in inactivating / destroying pathogens when using complete NSU370 System. System comprises NSU370 Mist Unit applying TECcare Control Disinfectant Solution.



# Steel Top Range

With BLOW OUTLET



- NQS250 / NQS250B**
- All-steel construction, tough and hard-wearing
  - Blower facility and diffuser attachment (NQS250B)
  - Quick and easy cable replacement
  - Plugged cable
  - 355x355x395mm (WxLxH)

CAPACITY (L)	9.0	WEIGHT (KG)	10.0
POWER CORD (M)	10.0	POWER (Volts AC/Hz)	230 / 50/60
MOTOR (W)	780	CLEANING RANGE (M)	26.4
SUCTION H.O (MM)	2350	KIT (See page 24)	AS0



- NVQ240**
- Heavy-duty, all-steel power head
  - Quick and easy cable replacement
  - Plugged cable
  - 360x370x415mm (WxLxH)

CAPACITY (L)	9.0	WEIGHT (KG)	9.65
POWER CORD (M)	10.0	POWER (Volts AC/Hz)	230 / 50/60
MOTOR (W)	780	CLEANING RANGE (M)	26.4
SUCTION H.O (MM)	2350	KIT (See page 24)	AS0



- NVQ370**
- Heavy-duty, all-steel power head
  - Quick and easy cable replacement
  - Plugged cable
  - 355x355x485mm (WxLxH)

CAPACITY (L)	15.0	WEIGHT (KG)	10.0
POWER CORD (M)	10.0	POWER (Volts AC/Hz)	230 / 50/60
MOTOR (W)	780	CLEANING RANGE (M)	26.4
SUCTION H.O (MM)	2350	KIT (See page 24)	AS0

- NVQ380**
- Heavy-duty, all-steel power head
  - Tough Structofoam construction
  - Quick and easy cable replacement
  - Plugged cable
  - 355x355x485mm (WxLxH)

CAPACITY (L)	15.0	WEIGHT (KG)	11.35
POWER CORD (M)	10.0	POWER (Volts AC/Hz)	230 / 50/60
MOTOR (W)	780	CLEANING RANGE (M)	26.4
SUCTION H.O (MM)	2350	KIT (See page 24)	AS0

Featuring an all-steel head, the Steep Tops range not only provides exceptional strength, it's also quiet and efficient.



# MicroLine

HEPA Filtration



- PPH320**
- Certified HEPA13 filtration down to 0.3 microns at 99.97% efficiency
  - Quick and easy cable replacement
  - Emptying with no dust and no mess
  - Plugged cable rewind
  - 355x355x465mm (WxLxH)

CAPACITY (L)	12.0	POWER (Volts AC/Hz)	230 / 50/60
POWER CORD (M)	12.5	CLEANING RANGE (M)	31.4
MOTOR (W)	620	MOST PENETRATING PARTICLE REF EN1822	99.950%
SUCTION H.O (MM)	2300	KIT (See page 24)	AS0
WEIGHT (KG)	10.0		

CLEAN ROOM Filtration



- CRQ370**
- Certified HEPA13 filtration down to 0.3 microns at 99.97% efficiency
  - Advanced 5-Stage filtration system
  - Quick and easy cable replacement
  - Conforms to ISO 14644-1 Class 5 classification
  - Emptying with no dust and no mess
  - 355x355x485mm (WxLxH)

CAPACITY (L)	10.0	POWER (Volts AC/Hz)	230 / 50/60
POWER CORD (M)	10.0	CLEANING RANGE (M)	26.4
MOTOR (W)	960	MOST PENETRATING PARTICLE REF EN1822	99.950%
SUCTION H.O (MM)	2300	KIT (See page 24)	A1
WEIGHT (KG)	11.5		



# Aircraft Line

Aircraft Compliant

ENHANCED Harness



- RSAV130**
- Aircraft specification
  - User comfort with ergonomically designed harness
  - High-efficiency filtration
  - 250x360x440mm (WxLxH)

CAPACITY (L)	6.0	WEIGHT (KG)	7.37
POWER CORD (M)	18.2	POWER (Volts AC/Hz)	110 / 400
MOTOR (W)	960	CLEANING RANGE (M)	43.2
SUCTION H.O (MM)	2400	KIT (See page 24)	AA30E



ALL Steel



- AVQ250**
- All-steel construction, tough and hard-wearing
  - Patented MicroTec noise reduction system
  - Aircraft specification
  - Plugged cable
  - 340x340x395mm (WxLxH)

CAPACITY (L)	9.0	WEIGHT (KG)	10.62
POWER CORD (M)	18.2	POWER (Volts AC/Hz)	110 / 400
MOTOR (W)	960	CLEANING RANGE (M)	43.2
SUCTION H.O (MM)	2500	KIT (See page 24)	AS4



TOUGH Structofoam



- AVQ380**
- Heavy-duty, all-steel power head
  - Patented MicroTec noise reduction system
  - Aircraft specification
  - Plugged cable
  - 355x355x485mm (WxLxH)

CAPACITY (L)	15.0	WEIGHT (KG)	11.82
POWER CORD (M)	18.2	POWER (Volts AC/Hz)	110 / 400
MOTOR (W)	960	CLEANING RANGE (M)	43.2
SUCTION H.O (MM)	2500	KIT (See page 24)	AS4

# Dry Big Capacity Vacuums

TOUGH Structofoam



- NVQ570 / NVDQ570**
- Tough Structofoam construction
  - Directional castors for ease of movement
  - Quick and easy cable replacement
  - 415x415x645mm (WxLxH)

CAPACITY (L)	23.0	WEIGHT (KG) NVQ570	16.5
POWER CORD (M)	10.0	WEIGHT (KG) NVDQ570	18.7
MOTOR (W) NVQ570	960	POWER (Volts AC/Hz)	230 / 50/60
MOTOR (W) NVDQ570	960x2	CLEANING RANGE (M)	26.8
SUCTION H.O (MM)	2300	KIT (See page 24)	BA2

TOUGH Structofoam

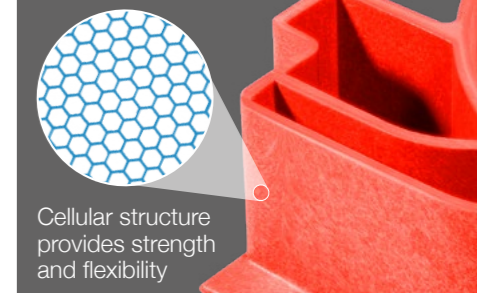


- NVQ900 / NVDQ900**
- Tough Structofoam construction
  - Pull handle for ease of transit
  - Large rear wheels provide excellent mobility
  - Quick and easy cable replacement
  - 490x800x880mm (WxLxH)

CAPACITY (L)	40.0	WEIGHT (KG) NVQ900	25.2
POWER CORD (M)	10.0	WEIGHT (KG) NVDQ900	27.7
MOTOR (W) NVQ900	960	POWER (Volts AC/Hz)	230 / 50/60
MOTOR (W) NVDQ900	960x2	CLEANING RANGE (M)	26.8
SUCTION H.O (MM)	2300	KIT (See page 24)	BA2

# Structofoam

- ✓ Incredibly tough & long-lasting
- ✓ Hard-wearing and chemical-resistant
- ✓ Exceptional strength-to-weight ratio
- ✓ Lightweight and ergonomic structure





## Dry Kits

**AH0 903754**

903712	2.2m FloMax Conical Hose	912358	280mm ProFlo Combination Floor Tool	601144	65mm Soft Dusting Brush
601051	Aluminium Tube Bend with NPC Volume Control	601141	Double Taper Hose / Tool Adaptor	601145	150mm Upholstery Tool
601024	Aluminium Extension Tube (x2)	601142	240mm Crevice Tool	601146	150mm Slide-on Brush for Upholstery Tool

**AS0 903146**

601008	Stainless Steel Extension Tube (x2)	912358	280mm ProFlo Combination Floor Tool	601144	65mm Soft Dusting Brush
601052	Stainless Steel Tube Bend with NPC Volume Control	601141	Double Taper Hose / Tool Adaptor	601145	150mm Upholstery Tool
903712	2.2m FloMax Conical Hose	601142	240mm Crevice Tool	601146	150mm Slide-on Brush for Upholstery Tool

**A1 607301**

601008	Stainless Steel Extension Tube (x2)	902071	300mm Combination Floor Nozzle	601144	65mm Soft Dusting Brush
601052	Stainless Steel Tube Bend with NPC Volume Control	601141	Double Taper Hose / Tool Adaptor	601145	150mm Upholstery Tool
602102	2.4m NuFlex Threaded Hose	601142	240mm Crevice Tool	601146	150mm Slide-on Brush for Upholstery Tool

## Specialised Kits

**BA2 607164**

602102	2.4m NuFlex Threaded Hose	602930	Aluminium Extension Tube (x2)	602256	65mm Soft Dusting Brush with Tube Adaptor
602931	Aluminium Tube Bend	602384	400mm ProFlo Brush / Rubber Floor Tool	602160	305mm ABS Crevice Tool

**AA30E 607395**

903972	1.2m NuFlex RSV / RSB Threaded Hose	601024	Aluminium Extension Tube (x2)	601141	Double Taper Hose / Tool Adaptor
601051	Aluminium Tube Bend with NPC Volume Control	912358	280mm ProFlo Combination Floor Tool	601144	65mm Soft Dusting Brush

**AA29E 607391**

601101	2.4m NuFlex Threaded Hose	912358	280mm ProFlo Combination Floor Tool	601144	65mm Soft Dusting Brush
601051	Aluminium Tube Bend with NPC Volume Control	601141	Double Taper Hose / Tool Adaptor	601145	150mm Upholstery Tool
601024	Aluminium Extension Tube (x2)	601142	240mm Crevice Tool	601146	150mm Slide-on Brush for Upholstery Tool

**AS4 900961**

903712	2.2m FloMax Conical Hose	601430	290mm FreeFlo Floor Tool	601144	65mm Soft Dusting Brush
601052	Stainless Steel Tube Bend with NPC Volume Control	601141	Double Taper Hose / Tool Adaptor	601145	150mm Upholstery Tool
601008	Stainless Steel Extension Tube (x2)	601142	240mm Crevice Tool	601146	150mm Slide-on Brush for Upholstery Tool

## Wet Kits

**AA12 607240**

601101	2.4m NuFlex Threaded Hose	601024	Aluminium Extension Tube (x2)	900918	300mm MultiFlo Dry Brush Tool
601025	Aluminium Tube Bend with (Black) Volume Control	900954	300mm MultiFlo Wet Pick-up Tool		

**BS7 607249**

602102	2.4m NuFlex Threaded Hose	602920	Stainless Steel Extension Tube (x2)		
602919	Stainless Steel Tube Bend	602380	400mm ProFlo Wet Pick-up Floor Tool		

**BS8 607241**

602102	2.4m NuFlex Threaded Hose	602920	Stainless Steel Extension Tube (x2)	602381	400mm ProFlo Dry Pick-up Floor Tool
602919	Stainless Steel Tube Bend	602380	400mm ProFlo Wet Pick-up Floor Tool		

## Extraction Kits

**A40A 607147**

601399	4.0m CleanTec Extraction Hose	601008	Stainless Steel Extension Tube	601968	CleanTec Trigger Valve and Spray Tube
601009	Stainless Steel Extraction Trigger Bend Tube	601126	275mm Fishtail Extraction Tool		
601006	Stainless Steel Lower Tool Extraction Tube	601225	100mm Upholstery Extraction Tool		

**A41A 607148**

601399	4.0m CleanTec Extraction Hose	601008	Stainless Steel Extension Tube	601968	CleanTec Trigger Valve and Spray Tube
601009	Stainless Steel Extraction Trigger Bend Tube	601423	275mm Aluminium Extraction Tool		
601006	Stainless Steel Lower Tool Extraction Tube	601225	100mm Upholstery Extraction Tool		

**BS27 607248**

602399	4.0m CleanTec Extraction Hose	602937	145mm Stainless Steel Extension Tube	602225	100mm Upholstery Extraction Tool
602922	Stainless Steel Extraction Tube Bend	602200	CleanTec TriJet Extraction Floor Tool Assembly		
602920	Stainless Steel Extension Tube (x2)	602300	CleanTec TriJet Trigger and Solution Tube Assembly		

# ProCare

## Setting the Standard with **Advanced Filtration**

NuTec Industrial Range	28
Anti-static	28
DustCare Range	28
TradeLine Range	28
H-Class Range	29
Accessories	30-31



- ✓ Conforms and performs to meet safety standards
- ✓ Designed and built from 50 years of expertise
- ✓ Powerful, long-life motors
- ✓ Specialist accessories and bags for demanding environments
- ✓ Rigorous manufacturing quality assurance, ensuring only the best in filtration standards



Specialist Removal



Industrial



Construction



Manufacturing

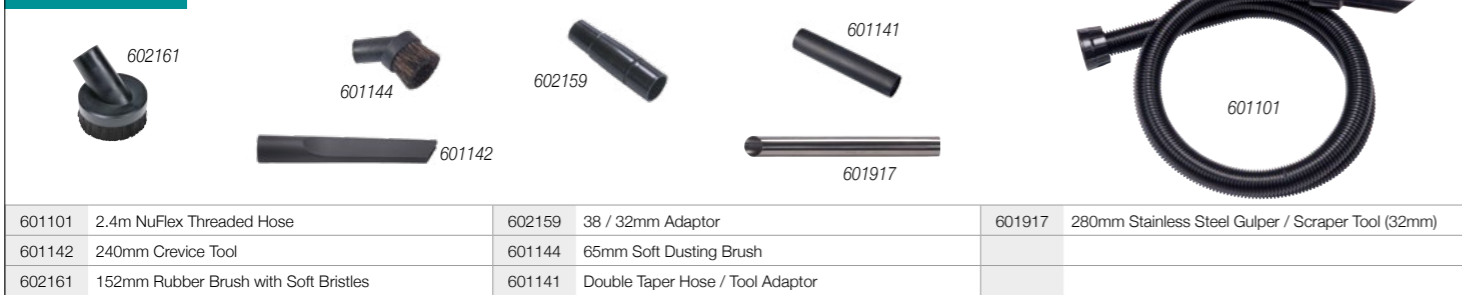


**AS10 908283**



601008	Stainless Steel Extension Tube (x2)	601430	290mm FreeFlo Floor Tool	601145	150mm Upholstery Tool
601052	Stainless Steel Tube Bend with NPC Volume Control	601141	Double Taper Hose / Tool Adaptor	601146	150mm Slide-on Brush for Upholstery Tool
601102	2.9m NuFlex Threaded Hose	601142	240mm Crevice Tool	601176	Multi Size Power Tool Adaptor
900918	300mm MultiFlo Dry Brush Tool	601144	65mm Soft Dusting Brush		

**AA16 909539**



601101	2.4m NuFlex Threaded Hose	602159	38 / 32mm Adaptor	601917	280mm Stainless Steel Gulper / Scraper Tool (32mm)
601142	240mm Crevice Tool	601144	65mm Soft Dusting Brush		
602161	152mm Rubber Brush with Soft Bristles	601141	Double Taper Hose / Tool Adaptor		

**AA18 902756**



601101	2.4m NuFlex Threaded Hose	602159	38 / 32mm Adaptor	601917	280mm Stainless Steel Gulper / Scraper Tool (32mm)
604016	10 x (NVM-2BH) HepaFlo Dust Bags	601144	65mm Soft Dusting Brush	604165	TriTex Filter for 305mm Machine
601142	240mm Crevice Tool	908229	Roll of 10 x 120L Waste Bags (700mm x 1100mm), Grey		
602161	152mm Rubber Brush with Soft Bristles	601141	Double Taper Hose / Tool Adaptor		

**AA19 902757 / AA20 902758**



601101	2.4m NuFlex Threaded Hose	602161	152mm Rubber Brush with Soft Bristles	601141	Double Taper Hose / Tool Adaptor
604017	10 x (NVM-3BH) HepaFlo Dust Bags (AA19 only HZ570)	602159	38 / 32mm Adaptor	601917	280mm Stainless Steel Gulper / Scraper Tool (32mm)
604019	10 x (NVM-4BH) HepaFlo Dust Bags (AA20 only HZ900)	601144	65mm Soft Dusting Brush	604116	Primary PermaTex Filter for 356mm Machine
601142	240mm Crevice Tool	908229	Roll of 10 x 120L Waste Bags (700mm x 1100mm), Grey		

**BA5 607167**



602102	2.4m NuFlex Threaded Hose (38mm)	602930	Aluminium Extension Tube (x2)	602162	152mm Rubber Brush with Stiff Bristles
602931	Aluminium Tube Bend	602381	400mm ProFlo Brush Tool		

**BB5 607335**



602102	2.4m NuFlex Threaded Hose (38mm)	601008	Stainless Steel Extension Tube (x2)	602162	152mm Rubber Brush with Stiff Bristles
602919	Stainless Steel Tube Bend	602381	400mm ProFlo Brush Tool		

**BB19 607349 / BB20 607350**



602102	2.4m NuFlex Threaded Hose	604144	65mm Soft Dusting Brush	604116	Primary PermaTex Filter for 356mm Machine
604017	10 x (NVM-3BH) HepaFlo Dust Bags (BB19 only HZD570)	908229	Roll of 10 x 120L Waste Bags (700mm x 1100mm), Grey	602159	38 / 32mm Adaptor
604019	10 x (NVM-4BH) HepaFlo Dust Bags (BB20 only HZD900)	602160	305mm ABS Crevice Tool		
602161	152mm Rubber Brush with Soft Bristles	602923	280mm Stainless Steel Gulper / Scraper Tool (38mm)		

**HAS 607661**



602111	2.6m Anti Static 38mm Hose Assembly	602929	ATX Stainless Steel Extension Tube (x2)	604019	10 x (NVB-4BH) HepaFlo Dust Bags
602112	ATX 400mm Widetrack Brush Tool	909185	152mm Conductive Dusting Brush	602923	280mm Stainless Steel Gulper / Scraper Tool (38mm)
602919	Stainless Steel Tube Bend	602125	ATX 130mm Conductive Rubber Gulper Tool	908229	Roll of 10 x 120L Waste Bags (700mm x 1100mm), Grey

**C14 607384**



603109	4.0m HiloFlex Threaded Hose				
603112	Stainless Steel Floor Gulper for HiloFlex Hose				
603114	400mm Brush Tool for Floor Gulper				
603141	152mm Rubber Brush with Stiff Bristles				

**G1 607701**



608001	3.0m HiloFlex Hose				
608027	Black Floor Gulper Tool				



# FloorCare

Innovative, Reliable & Effective Floorcare Solutions

Hurricane / NuSpeed Range	34
TwinTec Mains	35
TwinTec Battery	35-36
Compact Ride-on	37
Ride-on	37
Nu-Assist	38-39

- ✓ Increase productivity with the Nu-Assist Training App
- ✓ Performance you can trust from reliable, intuitive floorcare solutions
- ✓ Engineered by our dedicated team of expert, floorcare technicians
- ✓ Extensive range of brushes and accessories for professional results, every time
- ✓ Simple to maintain and service for years of professional, trouble-free cleaning







# Nu-Assist

## Increase Cleaning Productivity

**Providing training is not always straightforward and can be time-consuming, complex and costly.**

The Nu-Assist App offers the benefit of online training, through a simple, versatile, and user-friendly solution, resulting in increased cleaning performance and productivity.

### Multilingual Support

With Nu-Assist on-hand, you and your team have 24/7 access to multilingual training, troubleshooting and maintenance content from any mobile device, increasing cleaning productivity across the board.



Download the App



Nu-Assist delivers multilingual training, troubleshooting and maintenance content, from one convenient App.

## Training and Support Around the Clock

### Quick Start Guides

Don't delay and get straight to business with our quick start guides. Learn how to get your machine up and running and start achieving those high-quality cleaning results as quickly as possible.

### Maintenance Video

Find out how to effectively maintain your machine in order to ensure maximum cleaning productivity, time and time again.

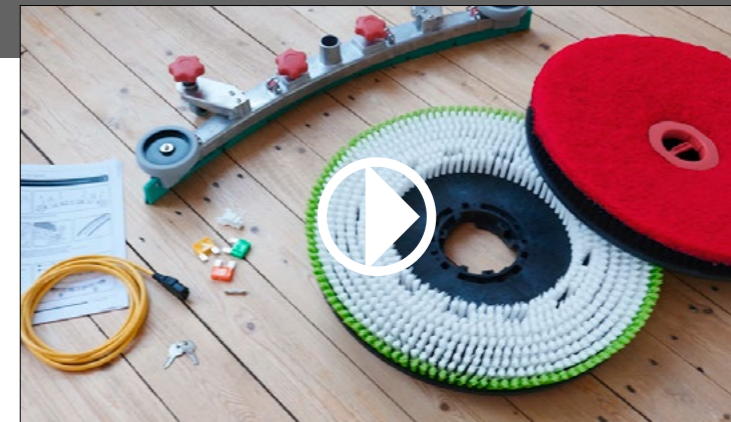
### Troubleshooting Video

Got a problem with your machine? Get help whenever you need it with Nu-Assist. Our wide range of handy troubleshooting videos help you to identify and resolve problems quickly and easily, meaning less down time and more time to get the job done.

### How it works

1. Scan the QR Code on the Machine
2. Open in App or Mobile Browser
3. View Quick Start Videos
4. Carry Out Maintenance Checklist
5. Complete Operator Training

Auto Product Finder loads relevant training content



Quick Start Videos



Troubleshooting and Maintenance Videos



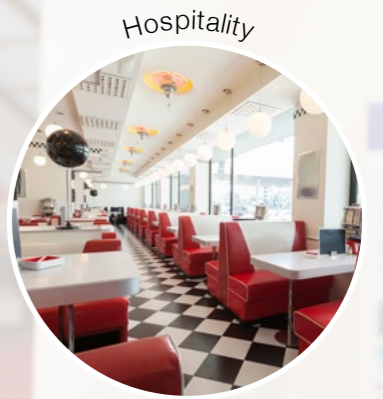
Visit: [numatic.com/apps/nu-assist](https://numatic.com/apps/nu-assist)

# VersaCare

## Raising Cleaning Standards and Productivity

ECO-Matic Range	42-43	Carousel Range	54
SERVO-Matic Range	44-45	NuBag Range	55
PRO-Matic Range	46-49	NuKeeper Range	56-57
Nu-Design	50-51	NuKeeper Top Tray Kits	58
Mopping Range	52-53	Optional End Bag Frame Kits	59

- ✓ Exceptionally tough, Structofoam construction
- ✓ Complete range of mopping systems to suit all environments
- ✓ Lockable and closed-away systems for public cleaning
- ✓ Industry colour-coding for effective infection control
- ✓ Ergonomic and stylish designs



Hospitality



Healthcare



Education



Retail

# ECO-Matic Trolley Range

**Sustainably engineered using the highest quality recycled plastic, each model in the ECO-Matic range benefits from 100% Structofoam construction, making it tough, easy to clean, and built to last. Designed for enhanced usability, productivity and simplicity, ECO-Matic offers a choice of 6 models to suit any cleaning task or environment.**

- Best value cleaning system
- 100% Structofoam construction
- Assembly in under 15 minutes
- Compact and easy to store
- Industry colour-coding for effective infection control
- Environmentally sustainable, Re-Flo Technology using the highest quality recycled plastic



**NEW**

**EM1**

- Waste 120L / 2x70L
- Shelf Storage
- Castors: 4 x 100mm
- 4 x Kit Options: SRK14 / 20 / 21 / 22
- Optional SprayMop
- Wall and Door Protection
- 545x900x1000mm (WxLxH)



**EM2**

- Waste 120L / 2x70L
- 2 x Deep Storage Drawers
- Castors: 4 x 100mm
- 4 x Kit Options: SRK14 / 20 / 21 / 22
- Optional SprayMop
- Optional Lockable Drawers
- Wall and Door Protection
- 545x900x1000mm (WxLxH)



**EM3**

- Waste 120L / 2x70L
- Shelf Storage
- Castors: 4 x 100mm
- 6 x Kit Options: SRK15 / 16 / 19 / 20 / 21 / 22
- Wall and Door Protection
- 545x1160x1000mm (WxLxH)



**EM4**

- Waste 2x120L / 4x70L
- Shelf Storage
- Castors: 4 x 100mm
- 3 x Kit Options: SRK20 / 21 / 22
- Wall and Door Protection
- 545x1230x1000mm (WxLxH)



**EM5**

- Waste 120L / 2x70L
- 2 x Deep Storage Drawers
- Castors: 4 x 100mm
- 6 x Kit Options: SRK15 / 16 / 19 / 20 / 21 / 22
- Optional SprayMop
- Optional Lockable Drawers
- Wall and Door Protection
- 545x1160x1000mm (WxLxH)



**EM6**

- Waste 2x120L / 4x70L
- 2 x Deep Storage Drawers
- Castors: 4 x 100mm
- Optional Lockable Drawers
- 3 x Kit Options: SRK20 / 21 / 22
- Wall and Door Protection
- 545x1230x1000mm (WxLxH)



## Mop Kits



- KIT SRK14**
- 1 x 18L Blue Handle Bucket, Grey C/W Dolly Mop Basket
  - Used on: EM1 / EM2



- KIT SRK15**
- 1 x 34L Blue Handle Bucket, Grey C/W Dolly Mop Basket
  - Used on: EM3 / EM5

**KIT SRK16 / SRK16K**

- Vertical Press available with Foam Insert for Flat Mops or without Foam Insert for Kentucky Mops
- 1 x 17L Red Handle Bucket, Grey
- 1 x 17L Blue Handle Bucket, Grey
- Used on: EM3 / EM5



- KIT SRK19 Bag Frame Kit**
- 1 x ReFlo Bag Frame with Fixing Screws
  - 1 x ReFlo Bag Securing Frame
  - 1 x Grey Lid
  - C/W Colour-coded Discs
  - Used on EM3 / EM5



- KIT SRK20**
- Rear Wheel Assembly
  - Used on: EM1 / 2 / 3 / 4 / 5 / 6



- KIT SRK21**
- 4 x 5L Swing Buckets
  - 5L Swing Bucket Handle, Red / Blue / Green / Yellow
  - Used on EM1 / 2 / 3 / 4 / 5 / 6



- KIT SRK22**
- 2 x 10L Buckets, Grey
  - 10L Bucket Handle, Red / Blue
  - Used on EM1 / 2 / 3 / 4 / 5 / 6

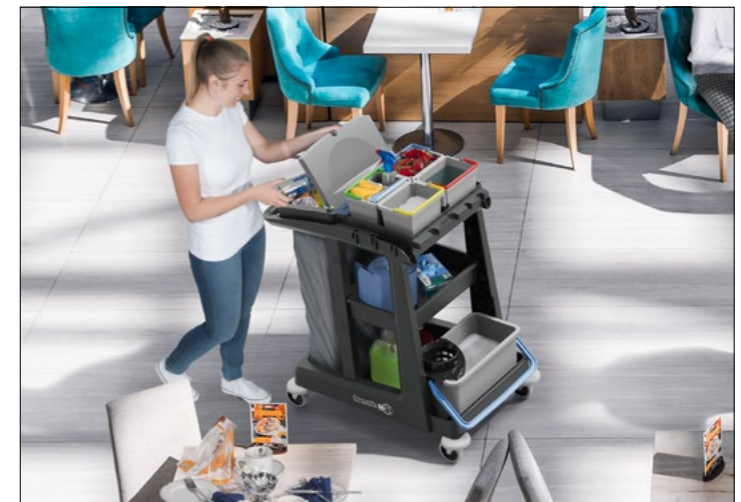
**Eco-Matic Bag Splitter Kit**

- 1 x Bag Splitter with Fixing Screws for Dual Waste
- 1 x Bag Trapper Extrusion
- C/W Bags
- C/W Roll of 70L Waste Bags
- C/W Colour-coded Discs
- Used on: EM1 / 2 / 3 / 4 / 5 / 6



Image shows EM5 Trolley with SRK16 and SRK21 Kit. Consumables for illustration purposes only.

\* Stated figure represents maximum use of recycled plastic in ReFlo Janitorial range, not including kits and accessories.



# NEW SERVO-Matic Trolley Range

The ultimate cleaning system, offering a choice of 6 base units and a wide range of kits and accessories for limitless configurations.

- Compact and Convenient
- 100% Structofoam construction
- Increase cleaning productivity with configurable design
- Industry colour-coding for effective infection control
- Environmentally sustainable, Re-Flo Technology using the highest quality recycled plastic



Image shows SMX1415 with Kit SRK3 and Door Panel Option. Consumables for illustration purposes only.



\* Stated figure represents maximum use of recycled plastic in ReFlo Janitorial range, not including kits and accessories.

## SM Range



- SM1405**
- Waste 120L / 2 x 70L
  - Optional Castor Sizes: 100 / 125 & Braked
  - 2 x 5L Swing Pails
  - Multiple Kit Options
  - 570x835x970mm (WxLxH)



- SM1415**
- Waste 120L / 2 x 70L
  - Optional Castor Sizes: 100 / 125 / 200 & Braked
  - 2 x 6L Buckets
  - Divided Tray Storage
  - Multiple Kit Options
  - 570x1090x1115mm (WxLxH)



- SM1705**
- Waste 120L / 2 x 70L
  - Optional Castor Sizes: 100 / 125 / 200 & Braked
  - Optional Buckets: 4 x 5L or 2 x 10L
  - Storage Drawer
  - Multiple Kit Options
  - 570x1325x1115mm (WxLxH)

## SMX Range



- SMX1405**
- Waste 120L / 2 x 70L
  - Optional Castor Sizes: 100 / 125 & Braked
  - 2 x 5L Swing Pails
  - Multiple Kit Options
  - Bin Surround
  - 570x835x970mm (WxLxH)



- SMX1415**
- Waste 120L / 2 x 70L
  - Optional Castor Sizes: 100 / 125 / 200 & Braked
  - 2 x 6L Buckets
  - Divided Tray Storage
  - Multiple Kit Options
  - Bin Surround
  - 570x1090x1115mm (WxLxH)



- SMX1705**
- Waste 120L / 2 x 70L
  - Optional Castor Sizes: 100 / 125 / 200 & Braked
  - Optional Buckets: 4 x 5L or 2 x 10L
  - Storage Drawer
  - Multiple Kit Options
  - Bin Surround
  - 570x1325x1115mm (WxLxH)

Please note 100mm castors come as standard. If different castors are required, they will arrive in addition.

## Mop Kits



- KIT SRK0 / SRK0K**
- Vertical Press available with / without Foam Insert
  - 1 x 15L Red Handle Bucket, Grey
  - 1 x 15L Blue Handle Bucket, Grey
  - Used on: SM1405 / 1415 / 1705 / SMX1405 / 1415 / 1705



- KIT SRK1 / SRK1K**
- Vertical Press available with / without Foam Insert
  - 1 x 17L Red Handle Bucket, Grey
  - 1 x 17L Blue Handle Bucket, Grey
  - 1 x Bucket Support Tray
  - Used on: SM1405 / 1415 / 1705 / SMX1405 / 1415 / 1705



- KIT SRK2 / SRK2K**
- Vertical Press available with / without Foam Insert
  - 1 x 22L Red Handle Bucket, Grey
  - 1 x 22L Blue Handle Bucket, Grey
  - 1 x Extension Tray
  - Used on: SM1415 / 1705 / SMX1415 / 1705



- KIT SRK3**
- Speedclean Wide Press
  - 1 x 22L Red Handle Bucket, Grey
  - 1 x 22L Blue Handle Bucket, Grey
  - 1 x Extension Tray
  - Used on: SM1415 / 1705 / SMX1415 / 1705



- KIT SRK4**
- 1 x MopMatic 2 Bucket, Grey
  - C/W Set of Colour-coded Discs
  - 1 x 22L Red Handle Bucket, Grey
  - 1 x Extension Tray
  - C/W 2.5L Dosing Bottle
  - Used on: SM1415 / 1705 / SMX1415 / 1705



- KIT SRK5**
- 2 x MopMatic 2 Bucket, Grey
  - C/W Set of Colour-coded Discs
  - 1 x Extension Tray
  - C/W 2.5L Dosing Bottle
  - Used on: SM1415 / 1705 / SMX1415 / 1705



- KIT SRK6**
- 2 x MopMatic 2 Bucket, Grey
  - C/W Set of Colour-coded Discs
  - 1 x 22L Red Handle Bucket, Grey, C/W Lid
  - MopMatic 2 Hang-on Frame, Nutex
  - 1 x Extension Tray
  - C/W 2.5L Dosing Bottle
  - Used on: SM1415 / 1705 / SMX1415 / 1705



- KIT SRK62**
- Hood Set
  - Lockable
  - Used on SM1705 / SMX1705



- MidMop Option MMB1616**
- Vertical Press available with / without Foam Insert
  - 510x680x1020mm (WxLxH)
  - Used on: SM1415 / 1705 / SMX1415 / 1705



- KIT SRK30**
- Optional Single Door and Back Panel C/W Locks and Hinges
  - Used on: SM1705 / SMX1705



- KIT SRK50 / 51**
- Optional Bin Surround Kit SRK50 Used on: SM1405 SRK51 Used on: SM1415



- Bag Splitter Kit**
- 1 x Bag Splitter with Fixing Screws for Dual Waste
  - C/W Roll of 70L Waste Bags
  - C/W Colour-coded Discs
  - Used on: SM1405 / 1415 / 1705 / SMX1405 / 1415 / 1705



- Customisable Door Panels**
- KIT SRK27**
    - Door Graphic Set No.1, Happy Cleaning
  - KIT SRK28**
    - Door Graphic Set No.2, Big Ben
  - KIT SRK29**
    - Door Graphic Set No.3, Sunflowers

For a personalised door panel with your logo, get in touch today to find out more.



**NEW** PRO-Matic Trolley Range

The PRO-Matic range offers a 100% configurable cleaning system, increasing operator usability and productivity. With a choice of 10 base units and a wide-range of kits and accessories, no detail goes unmissed; meeting the precise requirements of any user, in any environment, for any application.

- Increase cleaning productivity with configurable design
- Structofoam and Stainless Steel construction
- Environmentally sustainable, Re-Flo Technology uses the highest quality recycled plastic
- Industry colour-coding for effective infection control
- Lockable and closed-away systems for public cleaning



\* Stated figure represents maximum use of recycled plastic in ReFlo Janitorial range, not including kits and accessories.



- PM10**
- Waste 120L / 2 x 70L
  - Detachable Wheeled Bin
  - Optional Castors
  - Multiple Kit Options
  - 580x972x1073mm (WxLxH)



- PM20**
- Waste 120L / 2 x 70L
  - Detachable Wheeled Bin
  - Optional Castors
  - Multiple Kit Options
  - Optional Doors
  - Optional Storage Drawers
  - 580x1335x1073mm (WxLxH)



- PM30**
- Waste 120L / 2 x 70L
  - Detachable Wheeled Bin
  - Optional Castors
  - Multiple Kit Options
  - Optional Doors
  - Optional Storage Drawers
  - 580x1700x1073mm (WxLxH)

**Numatic**  
**Nu-Design**  
Bespoke Janitorial  
Configurable Cleaning Systems  
See page 50-51

Image shows PM10 with Wet Floor Sign, SRK1S and SRK21 Kit. Consumables for illustration purposes only.



- PM11**
- Waste 120L / 2 x 70L
  - Detachable Wheeled Bin
  - Optional Castors
  - Optional Doors
  - Optional Storage Drawers
  - 580x972x1073mm (WxLxH)



- PM21**
- Waste 120L / 2 x 70L
  - Detachable Wheeled Bin
  - Optional Castors
  - Optional Doors
  - Optional Storage Drawers
  - 580x1335x1073mm (WxLxH)



- PM31**
- Waste 120L / 2 x 70L
  - Detachable Wheeled Bin
  - Optional Castors
  - Optional Doors
  - Optional Storage Drawers
  - 580x1700x1073mm (WxLxH)

**Removable Bin Feature**

Completely detachable and manoeuvrable swing-out bin for convenient waste removal. Colour-coding options available for effective infection control.



- PM12**
- Waste 2 x 120L / 4 x 70L
  - Detachable Wheeled Bin
  - Optional Castors
  - 580x972x1073mm (WxLxH)



- PM22**
- Waste 2 x 120L / 4 x 70L
  - Detachable Wheeled Bin
  - Optional Castors
  - Optional Doors
  - Optional Storage Drawers
  - 580x1335x1073mm (WxLxH)



- PM32**
- Waste 2 x 120L / 4 x 70L
  - Detachable Wheeled Bin
  - Optional Castors
  - Optional Doors
  - Optional Storage Drawers
  - 580x1700x1073mm (WxLxH)

Please note castors do not come as standard. Castors will need to be ordered as an addition.



**NEW** PRO-Matic Trolley Range

Our new addition to the PRO-Matic Range, the PM13 provides a lockable and manoeuvrable solution.

The PM13 range offers a configurable cleaning system with a choice of features to suit operator usability and productivity. Ready for anything, always on the go and on-hand wherever you need it.

- Increase cleaning productivity with configurable design
- Structofoam and Stainless Steel construction
- Environmentally sustainable, Re-Flo Technology uses the highest quality recycled plastic
- Industry colour-coding for effective infection control
- Lockable and closed-away systems for public cleaning



- PM13**
- Optional Castors
  - Optional Doors
  - Optional Storage Drawers
  - 580x972x1073mm (WxLxH)



- PM13 with optional:**
- 2 x Deep Storage Kit
  - 4 x Shallow Storage Kit
  - 6 x Storage Box Runner Kit
  - Castors: 4 x 100mm
  - Lockable Doors
  - 4 x 5L Buckets
  - 2 x 10L Buckets
  - 580x972x1073mm (WxLxH)



- PM13 with optional:**
- 2 x Deep Storage Kit
  - 4 x Shallow Storage Kit
  - 6 x Storage Box Runner Kit
  - Castors: 4 x 100mm
  - 580x972x1073mm (WxLxH)



- PM13 with optional:**
- 2 x Deep Storage Kit
  - 4 x Shallow Storage Kit
  - 6 x Storage Box Runner Kit
  - Castors: 4 x 100mm
  - Lockable Doors
  - 580x972x1073mm (WxLxH)



\* Stated figure represents maximum use of recycled plastic in ReFlo Janitorial range, not including kits and accessories.



Image shows PM13 with SRK21, SRK22 Kit, 2 x Deep Storage Kit and 4 x Shallow Storage Kit and Lockable Doors. Consumables for illustration purposes only.

**Nu-Design**  
Bespoke Janitorial  
Configurable Cleaning Systems  
See page 50-51

PM Range Mop Kits & Accessories



- KIT SRK1S / SRK1KS**
- Vertical Press with Stainless Steel Handle available with / without Foam Insert
  - 1 x 17L Red Handle Bucket, Grey
  - 1 x 17L Blue Handle Bucket, Grey
  - 1 x Bucket Support Tray
  - Used on: PM10 / 20 / 30



- KIT SRK4**
- 1 x MopMatic 2 Bucket, Grey
  - C/W Set of Colour-coded Discs
  - C/W 2.5L Dosing Bottle
  - 1 x 22L Red Handle Bucket, Grey
  - 1 x Extension Tray
  - Used on: PM10 / 20 / 30



- KIT SRK2S / SRK2KS**
- Vertical Press with Stainless Steel Handle available with / without Foam Insert
  - 1 x 22L Red Handle Bucket, Grey
  - 1 x 22L Blue Handle Bucket, Grey
  - 1 x Extension Tray
  - Used on: PM10 / 20 / 30



- KIT SRK5**
- 2 x MopMatic 2 Buckets, Grey
  - C/W Set of Colour-coded Discs
  - C/W 2.5L Dosing Bottle
  - 1 x Extension Tray
  - Used on: PM10 / 20 / 30



- KIT SRK3S**
- Speedclean Wide Press with Stainless Steel Handle
  - 1 x 22L Red Handle Bucket, Grey
  - 1 x 22L Blue Handle Bucket, Grey
  - 1 x Extension Tray
  - Used on: PM10 / 20 / 30



- KIT SRK6S**
- 2 x MopMatic 2 Buckets, Grey
  - C/W Set of Colour-coded Discs
  - C/W 2.5L Dosing Bottle
  - 1 x 22L Red Handle Bucket, Grey, C/W Lid
  - MopMatic 2 Hang-on Frame, Stainless Steel
  - 1 x Extension Tray
  - Used on: PM10 / 20 / 30



- Bag Splitter Kit**
- 1 x Bag Splitter with Fixing Screws for Dual Waste
  - C/W Roll of 70L Waste Bags
  - C/W Colour-coded Discs
  - Used on: PM Range



- MidMop Option MMB1616**
- Vertical Press available with / without Foam Insert
  - 510x680x1020mm (WxLxH)
  - Used on: PM10 / 20 / 30



- Customisable Door Panels**
- KIT SRK27**
    - Door Graphic Set No.1, Happy Cleaning
  - KIT SRK28**
    - Door Graphic Set No.2, Big Ben
  - KIT SRK29**
    - Door Graphic Set No.3, Sunflowers
- Used on: PM Range

For a personalised door panel with your logo, get in touch today to find out more.



- KIT SRK30**
- Optional Single Door and Back Panel
  - C/W Locks and Hinges
  - Used on: PM11 / 13 / 20 / 21 / 22 / 30 / 31 / 32



- KIT SRK31**
- Optional Double Doors and 2 x Back Panels
  - C/W Locks and Hinges
  - Used on: PM21 / 30 / 31 / 32



- KIT SRK62S**
- Hood Set
  - Lockable
  - Used on: PM Range



- KIT SRK49**
- Swing-out Bin
  - Used on: PM10 / 11 / 12 / 20 / 21 / 22 / 30 / 31 / 32

# Nu-Design

Bespoke Janitorial

Nu-Design guides you through the product configuration process, providing a visual output and configuration breakdown at each selection. The result; a reliable, functional and innovative cleaning system that fits your needs precisely.

### Individual Environments Demand Individual Cleaning Solutions

Finding a janitorial system that fits your needs completely can be a real challenge. Giving total freedom of choice to the user, Nu-Design offers the ultimate solution.

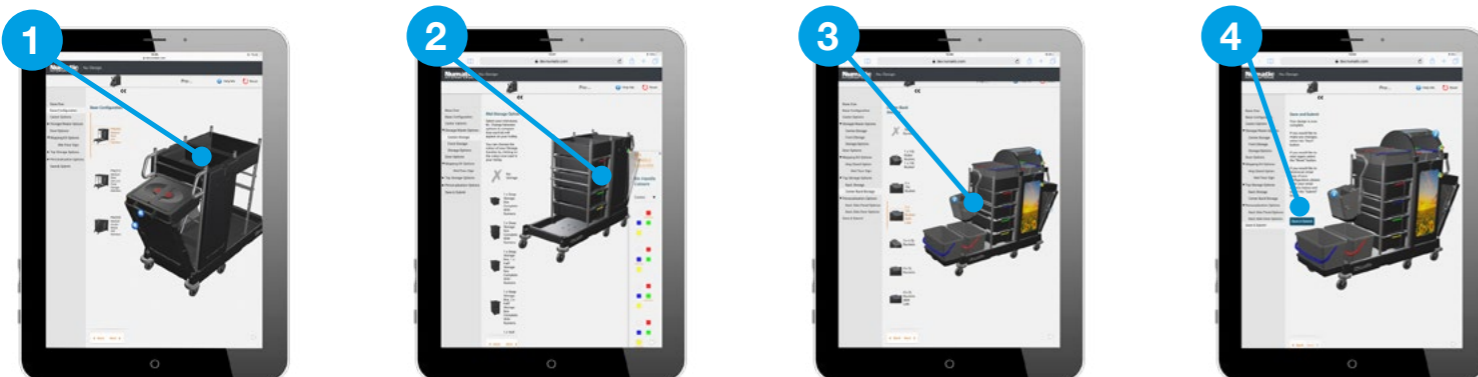
“ Finding a janitorial system that fits your needs completely can be a real challenge. ”



#### How it works

1. Select your trolley base and castor options
2. Pick storage options that meet your needs exactly
3. Choose your mopping system, waste options, accessories and personalisation
4. Submit for an itemised breakdown and quote

Compatible with desktop and mobile devices



Poor selection and configuration lowers cleaning standards and productivity.

Visit: [numatic.com/apps/nu-design](http://numatic.com/apps/nu-design)

# Mopping Range



### Polystatic Mop PCM401

- 1-Piece Mop Set
- C/W 50 x PolyStatic Mop Cloths
- C/W Disposable PolyStatic Mop "Gripper" Pad

PAD SIZE (MM)	400	WEIGHT (KG)	1.1
FIXING	Velcro	DIMENSIONS (MM) (H)	1400



### Polystatic Mop PCM403

- 3-Piece Mop Set
- C/W 50 x PolyStatic Mop Cloths
- C/W Disposable PolyStatic Mop "Gripper" Pad

PAD SIZE (MM)	400	WEIGHT (KG)	1.1
FIXING	Velcro	DIMENSIONS (MM) (H)	1400



### Polystatic Mop PCT400

- Telescopic Mop Set
- C/W 50 x PolyStatic Mop Cloths
- C/W Disposable PolyStatic Mop "Gripper" Pad

PAD SIZE (MM)	400	WEIGHT (KG)	1.1
FIXING	Velcro	DIMENSIONS (MM) (H)	1400



### DTK12G Wing Mop Pump Action Set

- C/W 1 x BluTec Microfibre Pocket Mop
- Suitable for Vertical Press, Wide Press and MopMatic
- Pocket Fixing
- Pad size 400mm



### DTK13G Wing Mop Pump Action Set

- C/W 1 x BluTec Microfibre Hang-on Mop
- Suitable for Vertical Press, Wide Press and MopMatic
- Hang-on Fixing
- Pad size 400mm



### PolyStatic Gripper Pad

- Disposable PolyStatic Mop "Gripper" Pad



### PolyStatic Mop Dusters

- Pack of 50 x PolyStatic Mop Cloths (White / Red / Blue / Green / Yellow)
- Carton of 400 x PolyStatic Mop Cloths, (8 x 50) (White / Red / Blue / Green / Yellow)
- C/W 2 x "Gripper" Pads



### Polystatic SprayMop PSM400G

- SprayMop Set
- C/W 50 x PolyStatic Mop Cloths
- C/W Disposable PolyStatic Mop "Gripper" Pad
- C/W 400ml Bottle
- Velcro Fixing
- Pad size 400mm



### DTK1 Kentucky Mop Set

- C/W 1 x Bactiguard 400g Mop
- Suitable for Vertical Press



### DTK2 Pocket Mop Set

- C/W 1 x BluTec Microfibre Pocket Mop
- Suitable for Vertical Press and Wide Press
- Pocket Fixing
- Pad size 400mm



### MM30G

- C/W 1 x Sponge
- Folding Press
- 4 x 50mm Castors
- Pad size 350mm
- 340x475x320mm (WxLxH)

CAPACITY (L)	30	FIXING	Velcro
--------------	----	--------	--------



### HB1812R

- Capacity 30L
- Optional Mop Kits - DTK1 / DTK2 / DTK3 / DTK12G / DTK13G
- Vertical Press available with / without Foam Insert
- 410x560x800mm (WxLxH)

CAPACITY CLEAN (L)	18	CASTOR SIZE (MM)	4 x 75
CAPACITY DIRTY (L)	12	PRESS	Vertical



### MMB1616

- Optional Mop Kits - DTK1 / DTK2 / DTK3 / DTK12G / DTK13G
- Vertical Press available with / without Foam Insert
- Optional Handle
- 510x680x1020mm (WxLxH)

CAPACITY CLEAN (L)	16	CASTOR SIZE (MM)	4 x 75
CAPACITY DIRTY (L)	16	PRESS	Vertical



### DTK3 Hang-on Mop Set

- C/W 1 x BluTec Microfibre Hang-on Mop
- Suitable for Vertical Press
- Hang-on Fixing
- Pad size 400mm



### DTK4 Velcro Mop Set

- C/W 1 x BluTec Microfibre Velcro Mop
- Suitable for Wide Press
- Velcro Fixing
- Pad size 400mm



### DTK6G SprayMop Master

- C/W 1 x BluTec Microfibre Pocket Mop
- C/W 400ml Bottle
- Velcro Fixing
- Pad size 400mm



### TMR2815

- Optional Mop Kits - DTK1 / DTK2 / DTK3 / DTK12G / DTK13G
- Vertical Press available with / without Foam Insert
- 410x800x1250mm (WxLxH)

CAPACITY CLEAN (L)	28	CASTOR SIZE (MM)	4 x 75
CAPACITY DIRTY (L)	15	PRESS	Vertical
CADDY (L)	4	WASTE (L)	No



### TMR2815W

- Optional Mop Kits - DTK1 / DTK2 / DTK3 / DTK12G / DTK13G
- Vertical Press available with / without Foam Insert
- 410x800x1125mm (WxLxH)

CAPACITY CLEAN (L)	28	CASTOR SIZE (MM)	4 x 75
CAPACITY DIRTY (L)	15	PRESS	Vertical
CADDY (L)	10	WASTE (L)	30

### DTK8G SprayMop Master

- C/W 1 x BluTec Microfibre Velcro Mop
- C/W 400ml Bottle
- Velcro Fixing
- Pad size 400mm



### DTK9 Twist Mop

- C/W 1 x Bactiguard Mop



### DTK10 Multimop

- C/W 1 x Sponge
- Folding Press
- Velcro Fixing
- Sponge size 350mm



# Carousel Range

## NC0R

- Waste 70L
- 2 x 5L Buckets
- C/W SprayMop Master and Tray
- Castors 4 x 80mm
- 480x545x890mm (WxLxH)



## NC1R

- Waste 70L
- 1 x 4L Small Caddy
- 14L Bucket and Dolly Mop Basket
- Castors 4 x 80mm
- Optional Twist Mop (NC1R-TM)
- 480x545x890mm (WxLxH)



Image shows NC1R-TM

## NC2R

- Waste 2 x 70L
- Castors 4 x 80mm
- 480x545x890mm (WxLxH)



## NC3R

- Waste 70L
- 1 x 4L Small Caddy
- 1 x 10L Large Caddy
- Castors 4 x 80mm
- 480x545x890mm (WxLxH)



## NC4R

- 2 x 4L Small Caddy
- 2 x 10L Large Caddy
- Castors 4 x 80mm
- 480x545x890mm (WxLxH)



# NuBag Range



## SAX120PR

- Waste 120L
- Castors 4 x 75mm
- 665x500x910mm (WxLxH)



## NSX240R

- Bag Capacity 2 x 120L
- Castors 4 x 75mm
- 580x780x965mm (WxLxH)



## LLT200R

- Bag Capacity 2 x 100L
- Castors 4 x 75mm
- 580x780x965mm (WxLxH)



## NBT200R

- Bag Capacity 2 x 100L
- Castors 4 x 75mm
- 580x780x860mm (WxLxH)



## NB3002R / AT

- Bag Capacity 1 x 100L, 1 x 200L
- Castors 4 x 200mm
- 665x1110x1115mm (WxLxH)



## NX1001

- Bag Capacity 100L
- Castors 4 x 75mm
- 390x460x960mm (WxLxH)

## NX1002

- Bag Capacity 2 x 100L
- Castors 4 x 75mm
- 460x760x960mm (WxLxH)



## NX1501

- Bag Capacity 150L
- Castors 4 x 75mm
- 460x760x760mm (WxLxH)



## NX2001

- Bag Capacity 200L
- Castors 4 x 75mm
- 460x760x960mm (WxLxH)



## NX2401

- Bag Capacity 240L
- Castors 4 x 75mm
- 550x780x960mm (WxLxH)

## NEW ReFlo Technology

Our ReFlo range is engineered from the highest quality, recycled plastic using our innovative, environmentally sustainable ReFlo Technology. ReFlo Technology uses post-industrial plastics from the automotive industry, which are diverted from landfill or incineration.



## Compact Carousel Range

- Convenient and user-friendly
- Compact and easy-to-store
- Detachable colour-coded caddies



# NuKeeper Range



- NKS1LLR**
- Bag Capacity 1 x 100L
  - Low Level (LL)
  - 1 x Storage Shelf
  - Castors 4 x 100mm
  - 582x998x1026mm (WxLxH)



- NKS2LLR**
- Bag Capacity 2 x 100L
  - Low Level (LL)
  - 1 x Storage Shelf
  - Castors 4 x 100mm
  - 582x1420x1026mm (WxLxH)



- NKS1R**
- Bag Capacity 100L
  - Full Height
  - 2 x Storage Shelves
  - Castors 4 x 100mm
  - 582x998x1352mm (WxLxH)



- NKTOLLR**
- Low Level (LL)
  - 1 x Twin Storage Shelf
  - Castors 4 x 100mm
  - 582x940x1026mm (WxLxH)



- NKT1LLR**
- Bag Capacity 1 x 100L
  - Low Level (LL)
  - 1 x Twin Storage Shelf
  - Castors 4 x 100mm
  - 582x1361x1026mm (WxLxH)



- NKT2LLR**
- Bag Capacity 2 x 100L
  - Low Level (LL)
  - 1 x Twin Storage Shelf
  - Castors 4 x 100mm
  - 582x1783x1026mm (WxLxH)



- NKS2R**
- Bag Capacity 2 x 100L
  - Full Height
  - 2 x Storage Shelves
  - Castors 4 x 100mm
  - 582x1420x1352mm (WxLxH)



- NKU30RFF**
- Flexi-Front (FF)
  - 1 x Twin Storage Shelf
  - Castors 4 x 200mm All-Terrain Wheels
  - 667x1116x1205mm (WxLxH)



- NKU30RHF**
- Hard-Front (HF)
  - Lockable
  - Space Saving Bi-fold Doors
  - Castors 4 x 200mm All-Terrain Wheels
  - 667x1116x1205mm (WxLxH)



- NKU31RFF**
- Bag Capacity 1 x 100L
  - Flexi-Front (FF)
  - 1 x Twin Storage Shelf
  - Castors 4 x 200mm All-Terrain Wheels
  - 667x1532x1205mm (WxLxH)



- NKT0R**
- Full Height
  - 2 x Twin Storage Shelves
  - Castors 4 x 100mm
  - 582x940x1352mm (WxLxH)



- NKT1R**
- Bag Capacity 1 x 100L
  - Full Height
  - 2 x Twin Storage Shelves
  - Castors 4 x 100mm
  - 582x1361x1352mm (WxLxH)



- NKT2R**
- Bag Capacity 2 x 100L
  - Full Height
  - 2 x Twin Storage Shelves
  - Castors 4 x 100mm
  - 582x1783x1352mm (WxLxH)



- NKU31RHF**
- Bag Capacity 1 x 100L
  - Hard-Front (HF)
  - 1 x Twin Storage Shelf
  - Lockable
  - Space Saving Bi-fold Doors
  - Castors 4 x 200mm All-Terrain Wheels
  - 667x1532x1205mm (WxLxH)



- NKU32RFF**
- Bag Capacity 2 x 100L
  - Flexi-Front (FF)
  - 1 x Twin Storage Shelf
  - Castors 4 x 200mm All-Terrain Wheels
  - 667x1948x1205mm (WxLxH)



- NKU32RHF**
- Bag Capacity 2 x 100L
  - Hard-Front (HF)
  - 1 x Twin Storage Shelf
  - Lockable
  - Space Saving Bi-fold Doors
  - Castors 4 x 200mm All-Terrain Wheels
  - 667x1948x1205mm (WxLxH)

# NuKeeper Top Tray Kits



- NKA1**
- 1 x Tray with Lid
  - 1 x Tray with Divisions and Lid
  - 1 x Half Tray



- NKA2**
- 2 x Tray with Divisions and Lid
  - 1 x Half Tray



- NKA3**
- 2 x Tray with Lid
  - 1 x Half Tray



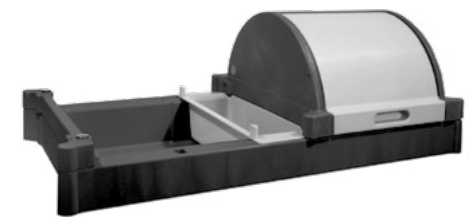
- NKA4**
- 1 x Tray
  - 1 x Tray with Divisions
  - 1 x Half Tray



- NKA5**
- 2 x Tray
  - 1 x Half Tray



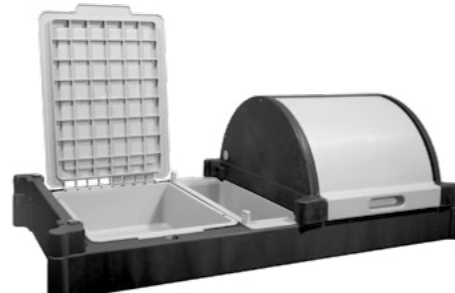
- NKA6**
- 2 x Tray with Divisions
  - 1 x Half Tray



- NKA7R**
- 1 x Hood Set
  - 1 x Half Tray



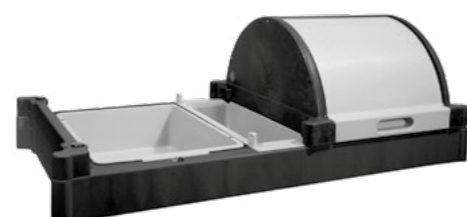
- NKA8R**
- 2 x Hood Set
  - 1 x Half Tray



- NKA9R**
- 1 x Hood Set
  - 1 x Tray with Lid
  - 1 x Half Tray



- NKA10R**
- 1 x Hood Set
  - 1 x Tray with Divisions and Lid
  - 1 x Half Tray



- NKA11R**
- 1 x Hood Set
  - 1 x Tray
  - 1 x Half Tray



- NKA12R**
- 1 x Hood Set
  - 1 x Tray with Divisions
  - 1 x Half Tray



- NKA13 Top Kit**
- Top Kit - Laundry Support Set

Please note the ReFlo Technology base shown is part of the trolley and not part of the NuKeeper Top Tray Kits.

# Optional End Bag Frame Kits

- NKA100PR**
- Bag Capacity 1 x 100L
  - Optional Moulded Laundry Bag Extension Kit



- NKA100PAR**
- Bag Capacity 1 x 100L
  - Optional Moulded Laundry Bag Extension Kit
  - Adjustable Handle



- NKA101PR**
- Waste 1 x 120L
  - Optional Moulded Full Waste Bag Extension Kit
  - C/W 3 Piece Lid Set, Black



- NKA102PR**
- Waste 1 x 140L / 2 x 70L
  - Optional Moulded Twin Waste Bag Extension Kit
  - C/W Split Lid Set, Red / Blue



- NKA103PR**
- Waste 1 x 120L
  - Optional Moulded Linen Bag Extension Kit
  - C/W 3 Piece Lid Set, Black



- NKA140PR**
- Waste 1 x 120L
  - Optional Moulded Full Waste Bag Extension Kit
  - C/W iPad / Tablet Storage Lid Set, Black



- NKA109UR**
- Optional Vacuum Storage Platform and Support Frame Kit, Black
  - Use on NKU Models Only



- NKA111UR**
- Optional End Kit Twin End Half Tray Kit, Black
  - All NKS / NKT / NKU Models



- NKA112UR**
- Optional End Kit Twin End Full Tray Kit, Black
  - All NKS / NKT / NKU Models



- NKA120R**
- Optional End Kit SprayMop Tray Kit, Black
  - All NKS / NKT / NKU Models



- NKA130UR**
- Optional End Kit 30 Litre Waste Bin Kit, Black
  - All NKS / NKT / NKU Models



**Head Office**  
**Numatic International Limited**  
Chard, Somerset TA20 2GB UNITED KINGDOM

Tel: 01460 68600 [numatic.com](http://numatic.com)

**Numatic International S.A.S**  
13/17 rue du Valengelier  
EAE la Tuilerie, 77500 Chelles  
FRANCE

Tel: 01 64 72 61 61  
[numatic.fr](http://numatic.fr)

**Numatic International**  
**Schweiz AG.**  
Sihlbruggstrasse 3A  
6340 Baar  
SCHWEIZ

Tel: 041 768 07 60  
[numatic.ch](http://numatic.ch)

**Numatic International SLU**  
La Forja, 41, 08840  
Viladecans, Barcelona  
SPAIN

Tel: 34 936 472 222  
[numatic.es](http://numatic.es)

**Numatic International (Pty.) Ltd.**  
16th & Pharmaceutical Roads  
Midrand, Gauteng, S.A. 1685  
SOUTH AFRICA

Tel: 0861 686 284  
[numatic.co.za](http://numatic.co.za)

**Numatic International ULDA**  
Rua da Boa Viagem, 177  
4470 - 210 Moreira Maia  
PORTUGAL

Tel: 351 220 047 700  
[numatic.pt](http://numatic.pt)

**Numatic International GMBH**  
Fränkische Straße 15-19,  
30455 Hannover  
DEUTSCHLAND

Tel: 05 11 98 42 16 0  
[numatic.de](http://numatic.de)

**Numatic International BV**  
Vennootsweg 15  
2404 CG, Alphen aan den Rijn  
NEDERLAND

Tel: 0172 467 999  
[numatic.nl](http://numatic.nl)

# Numatic