

# purpleurban

premium residential estate



## Your Gateway to Premium Living in Lekki

**Location:** Behind Purplelekki, Off Freedom Way, Lekki Phase 1 | **Land Size:** 1.4 Hectares



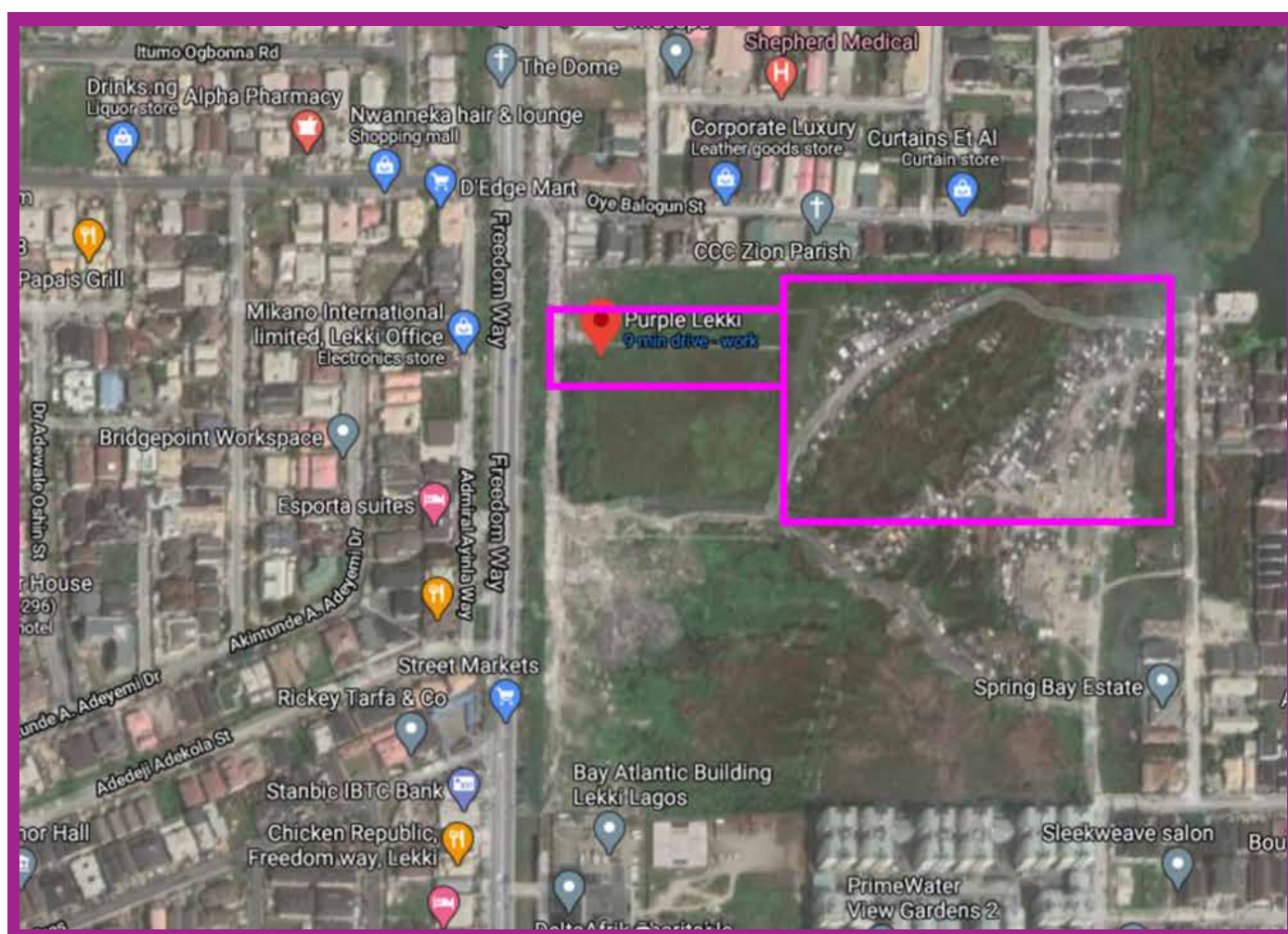
## Urban Living

---

Welcome to Purple Urban, a premium residential estate nestled just off Freedom Way in the heart of Lekki. This exclusive development offers a unique opportunity for real estate developers, investors, and prospective homeowners to secure their place in one of the most sought-after locations in Lagos.

# Location

Purple Urban transports homeowners to a serene haven in metropolitan Lagos, in close proximity to the world of entertainment, cuisine, shopping and Workspaces a true taste of all inclusive living. Sandwiched between the emerging Orange and Periwinkle islands and the Lekki Expressway, Freedom Way is an arterial route currently being developed as a main thoroughfare between the Lagos Mainland and Island zones.





## Investment Highlights

---



### Limited Availability:

- Purple Urban consists of only **13** unequal plots spread across **8131sqm**.
  - With land in Lekki being a rare commodity, this is a golden opportunity for investors and developers to secure a prime piece of real estate.
- 



### High Appreciation Potential:

- Lekki has a proven track record of high appreciation in property value.
  - The strategic location of Purple Urban positions it for exponential growth, ensuring a solid return on investment.
- 



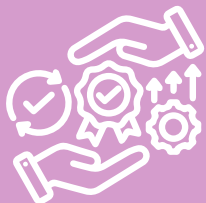
### Flexible Plot Sizes:

- Choose from plots ranging from **500sqm** to **1002sqm** to suit your specific needs.
- This flexibility allows for diverse development possibilities, catering to a variety of projects.



## Exclusive Benefits for Buyers

---



### Comprehensive Services:

- Purple Real Estate goes beyond land acquisition by offering essential services to the site.
- Development services include road construction, drainage systems, landscaping, and street lighting.



### Deed of Assignment:

- Every buyer receives a Deed of Assignment, ensuring a transparent and legal transaction.

# Why Purple Urban?

---

## **Strategic Location:**

- Just off Freedom Way, Purple Urban is strategically positioned in the heart of Lekki.
- Proximity to essential amenities, business districts, and recreational centers ensures convenience for residents.

## **Premium Infrastructure:**

- Purple Real Estate is committed to providing top-notch infrastructure, enhancing the overall appeal and value of the estate.

## **Community Living:**

- Experience a sense of community with like-minded neighbors in this exclusive residential enclave.





## Act Now - Your Future Awaits

---

Seize the opportunity to invest in Purple Urban and unlock the full potential of Lekki's thriving real estate market. With limited plots available, act swiftly to secure your place in this premium development.

# Contact

---

For inquiries and site visits, please contact Purple Real Estate:

- **Phone:** +2348170787753

- **Email:** [contact@purple.xyz](mailto:contact@purple.xyz)

\*Disclaimer: Prices and availability are subject to change without notice. Terms and conditions apply.\*



purpleurban  
premium residential estate

purple



@purplegroupng



@purple



@purplegroupng



Purple

contact@purple.xyz | +2348170787753 | www.purple.xyz